

Converting Colors

Hex(B19496)

Have a look what the booklet for
Hex(B19496) contains.

Hex(B19496)	3
<i>Conversions</i>	4
<i>Details</i>	6
<i>Harmonies</i>	11
<i>Previews</i>	23
<i>Color Blindness Simulation</i>	26
<i>CSS Examples</i>	29

Color

Hex(B19496)

Conversions

Conversions Part 1

Format	Color
Hex	B19496
RGB	177, 148, 150
RGB Percent	69%, 58%, 59%
CMY	0.3059, 0.4196, 0.4118
CMYK	0.00, 0.16, 0.15, 0.31
HSL	356°, 16%, 64%
HSV	356°, 16%, 69%
XYZ	34.2264, 32.7289, 33.3676
YIQ	156.8990, 16.6420, 6.7700

Conversions

Conversions Part 2

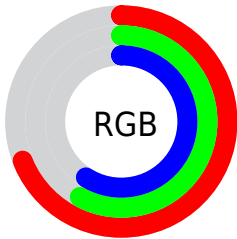
Format	Color
RYB	177, 148, 150
Decimal	11637910
CIELab	63.94, 11.15, 2.99
CIELCh	64, 11.543, 15.008
Yxy	32.7289, 0.3412, 0.3262
Android (android.graphics.Color)	4289827990 (0xFFB19496)
YUV	156.8990, -3.4012, 17.6286
Hunter-Lab	57.2092, 6.6746, 5.4653

Details

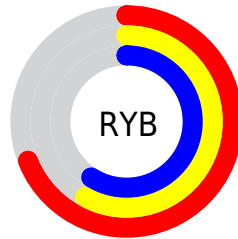
The Hex color **B19496** is a light color, and the websafe version is hex **CC9999**. A complement of this color would be **94B1AF**, and the grayscale version is **9D9D9D**.

A 20% lighter version of the original color is **E9CACC**, and **7C6163** is the 20% darker color. If you saturate the color by 10%, you get **B18286**, and if you desaturate by 10%, it is **B1A6A6**.

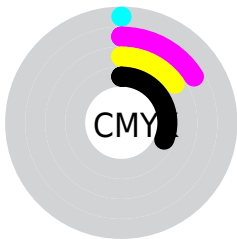
Distribution



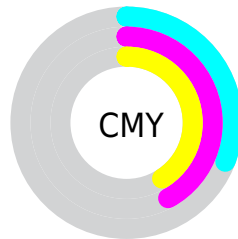
- Red (69%)
- Green (58%)
- Blue (59%)



- Red (69%)
- Yellow (58%)
- Blue (59%)



- Cyan (0%)
- Magenta (16%)
- Yellow (15%)
- Black (31%)



- Cyan (31%)
- Magenta (42%)
- Yellow (41%)

Brightness & Saturation Gradients

These gradients show how the Hex color B19496 changes by changing the brightness by 10 percent. The first figure shows a shift by +10% for each color and the second figure -10%.

Similar to the brightness gradients but the following saturation gradients show a change of the Hex color B19496 by changing the saturation by 10% instead.



B19496



B19496

FFFFFF



967A7C



E9CACC



7C6163



FFE6E8



63494B



4B3335



331D20



200508



000000



B19496



B19496



B18286



B1A6A6

 B17175

 B1B7B7

 B15F65

 B1C9C7

 B14D54

 B1DBD8

 B13C44

 B1EDE8

 B12A33

 B1FEF9

 B11823

 B1FFFF

 B10612

 B1000C

Harmonies

Analogous

The Analogous color harmony consists of three colors that are next to each other on the color wheel.



AD94A1



B19496



AF968D

Triad

The Triadic color harmony groups three colors that are evenly spaced from another and form a triangle on the color wheel.



B19496



929F8C



8A9DAE

Complementary

The Complementary color scheme is a pair of colors which are on the opposite of each other on the color wheel.



B19496



94B1AF

Split Complementary

Split-complementary colors differ from the complementary color scheme. The scheme consists of three colors, the original color and two neighbors of the complement color.



82A0A9



B19496



87A195

Square

The Square scheme is like the rectangle color scheme, but the four colors are evenly spaced on the color wheel.



B19496



9E9C87



81A1A0



969AAF

Rectangle

The Rectangle color scheme consists of four colors that form a rectangle on the color wheel.



B19496



AB9789



81A1A0



879EAD

Sweetspot

The Sweet Spot groups the original color and five complimentary colors.



B19496



E6DADB



AF94B1



736C6C



F2F2F2



737373

Same Dimension

The Same Dimension uses a secret algorithm to generate beautiful new colors.



B19496



E6B8BB



B1A094



595051



99000B



1A0002

Inverse Universe

The Inverse Universe completely reimagines the original color for something new.



B19496



E6B8BB



94A5B1



595051



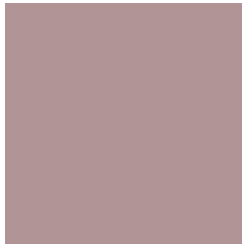
99000B



1A0002

Previews

White Background



This preview shows how the Hex color B19496 looks on a white background.

Color Contrast Check

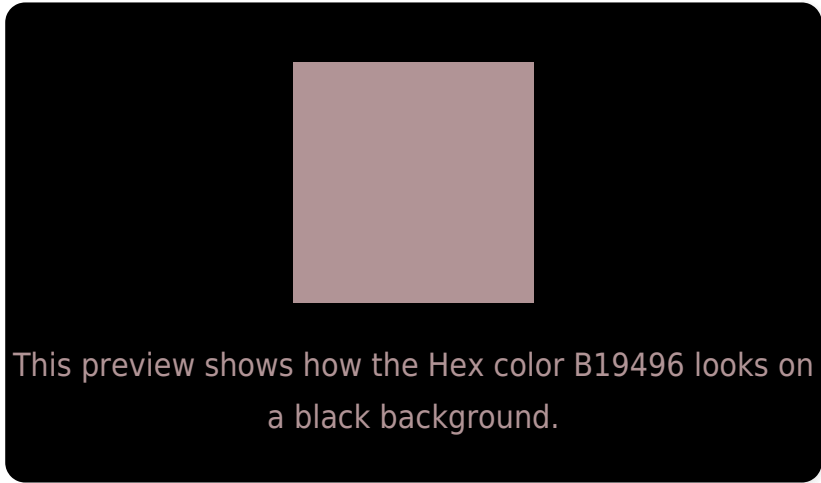
Large Text (above 18pt) WCAG AA × Fail

Any Text WCAG AA × Fail

Large Text (above 18pt) WCAG AAA × Fail

Any Text WCAG AAA × Fail

Black Background



Color Contrast Check

Large Text (above 18pt) WCAG AA ✓ Pass

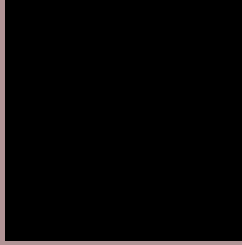
Any Text WCAG AA ✓ Pass

Large Text (above 18pt) WCAG AAA ✓ Pass

Any Text WCAG AAA ✓ Pass

If you want to check with other color combinations, try the [Color Contrast Checker](#).

Hex B19496 Background



This preview shows how black text looks on a background with the Hex color B19496.



This preview shows how white text looks on a background with the Hex color B19496.

Color Blindness Simulation

Color vision deficiency is a very complex topic, and I could not describe the different causes any better than Wikipedia does, so if you want to learn more, you should check out their [article about color blindness](#).

Dichromacy



Original Color
B19496

Protanopia
9E9A9A

Deuteranopia
AC9696



Tritanopia
B2939E

Trichromacy



Original Color
B19496

Protanomaly
A59899

Deuteranomaly
AE9596

Tritanomaly
B2939B

Monochromacy



Original Color
B19496

Achromatopsia
9D9D9D

Achromatomaly
A49A9A

CSS Examples

Text

The CSS property to change the color of the text to Hex B19496 is called "color". The color property can be set on classes, ids or directly on the HTML element.

This example shows how text in the color #B19496 looks like.

```
.text, #text, p{  
    color:#B19496  
}
```

If you want to add a text shadow in that color use the text-shadow property, you can generate a text shadow directly with our [CSS Text Shadow Generator](#).

Here you see how black text with a 4 pixel #B19496 colored shadow looks like.

```
.shadow{ text-shadow: 4px 4px 2px #B19496
}
```

Border

The CSS property to change the border of an element to Hex B19496 is called "border". The border property can be set on classes, ids or directly on the HTML element.

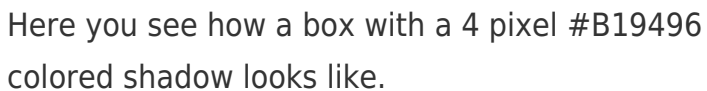
This example shows the color as border, it can be applied via the CSS property "border" or "border-color".

```
.border, #border, table{ border:4px solid
#B19496 }
```

If only the border color should be changed use the property `border-color`.

```
.border{ border-color:#B19496 }
```

If you want to add a box shadow in that color use:



Here you see how a box with a 4 pixel #B19496 colored shadow looks like.

```
.boxshadow{ -moz-box-shadow:4px 4px 4px  
4px #B19496; -webkit-box-shadow:4px 4px  
4px 4px #B19496; box-shadow:4px 4px 4px  
4px #B19496 }
```

Background

The CSS property to change the background color of an element to Hex B19496 is called "background". The background property can be set on classes, ids or directly on the HTML element.

```
.background, #background, body{  
background:#B19496 }
```

If only the background color should be changed can be used:

```
.background{ background-color:#B19496 }
```

This example shows the color as background, it is applied via the CSS property "background".

To optimize and compress your CSS code, you can use our [online CSS compressor and optimizer](#) based on csstidy. If you want to create a linear or radial gradient as background or border, check our [CSS Gradient Generator](#).

Hey! You found this booklet interesting? Support Converting Colors with the new Membership Option!

The pro membership hides all ads, plus gives you double the colors in the color bucket, and more awesome pro features!

[Learn more, Memberships starting at \\$2.50/m!](#)

**Follow me
on Twitter!**

@ConvertingColor