

# Converting Colors

Hex(B1999E)

Have a look what the booklet for  
Hex(B1999E) contains.

<b>Hex(B1999E)</b> .....	3
<i><b>Conversions</b></i> .....	4
<i><b>Details</b></i> .....	6
<i><b>Harmonies</b></i> .....	11
<i><b>Previews</b></i> .....	23
<i><b>Color Blindness Simulation</b></i> .....	26
<i><b>CSS Examples</b></i> .....	29

# **Color**

**Hex(B1999E)**

# Conversions

## Conversions Part 1

<b>Format</b>	<b>Color</b>
Hex	<a href="#">B1999E</a>
RGB	<a href="#">177, 153, 158</a>
RGB Percent	<a href="#">69%, 60%, 62%</a>
CMY	<a href="#">0.3059, 0.4000, 0.3804</a>
CMYK	<a href="#">0.00, 0.14, 0.11, 0.31</a>
HSL	<a href="#">348°, 13%, 65%</a>
HSV	<a href="#">348°, 14%, 69%</a>
XYZ	<a href="#">35.6943, 34.5982, 37.1446</a>
YIQ	<a href="#">160.7460, 12.6990, 6.6430</a>

# Conversions

## Conversions Part 2

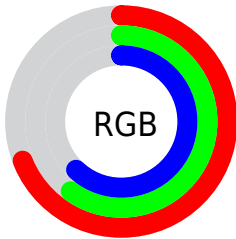
Format	Color
<a href="#">RYB</a>	<a href="#">177, 153, 158</a>
Decimal	<a href="#">11639198</a>
CIELab	<a href="#">65.43, 9.73, 0.66</a>
CIELCh	<a href="#">65, 9.747, 3.869</a>
Yxy	<a href="#">34.5982, 0.3322, 0.3220</a>
Android (android.graphics.Color)	<a href="#">4289829278</a> ( <a href="#">0xFFB1999E</a> )
YUV	<a href="#">160.7460, -1.3538, 14.2548</a>
Hunter-Lab	<a href="#">58.8202, 5.3849, 3.7329</a>

# Details

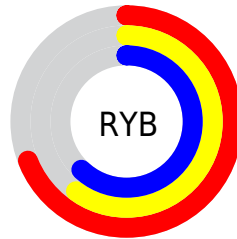
The Hex color **B1999E** is a light color, and the websafe version is hex **999999**. A complement of this color would be **99B1AC**, and the grayscale version is **A1A1A1**.

A 20% lighter version of the original color is **E9CFD5**, and **7C666B** is the 20% darker color. If you saturate the color by 10%, you get **B18790**, and if you desaturate by 10%, it is **B1ABAC**.

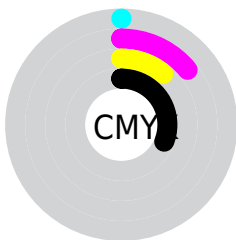
# Distribution



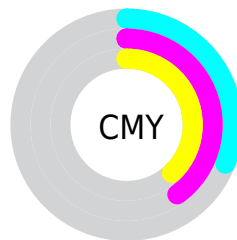
- Red (69%)
- Green (60%)
- Blue (62%)



- Red (69%)
- Yellow (60%)
- Blue (62%)



- Cyan (0%)
- Magenta (14%)
- Yellow (11%)
- Black (31%)



- Cyan (31%)
- Magenta (40%)
- Yellow (38%)

# Brightness & Saturation Gradients

These gradients show how the Hex color B1999E changes by changing the brightness by 10 percent. The first figure shows a shift by +10% for each color and the second figure -10%.

Similar to the brightness gradients but the following saturation gradients show a change of the Hex color B1999E by changing the saturation by 10% instead.



 B1999E

 B1999E

FFFFFF

 967F84

 E9CFD5

 7C666B

 FFECF1

 634E53

 4B373C

 342226

 1F0C11

 000000

 B1999E

 B1999E

 B18790

 B1ABAC

 B17682

 B1BCBA

 B16474

 B1CEC8

 B15266

 B1E0D6

 B14158

 B1F1E4

 B12F4A

 B1FFF2

 B11D3C

 B1FFFF

 B10B2E

 B10025

# Harmonies

## Analogous

The Analogous color harmony consists of three colors that are next to each other on the color wheel.



AC9AA7



B1999E



B19A96

# Triad

The Triadic color harmony groups three colors that are evenly spaced from another and form a triangle on the color wheel.



B1999E



9BA190



8EA2AE

# Complementary

The Complementary color scheme is a pair of colors which are on the opposite of each other on the color wheel.



B1999E



99B1AC

# Split Complementary

Split-complementary colors differ from the complementary color scheme. The scheme consists of three colors, the original color and two neighbors of the complement color.



89A4A8



B1999E



91A397

# Square

The Square scheme is like the rectangle color scheme, but the four colors are evenly spaced on the color wheel.



B1999E



A59F8E



8BA4A0



979FB0

# Rectangle

The Rectangle color scheme consists of four colors that form a rectangle on the color wheel.



B1999E



AF9B91



8BA4A0



8CA3AD



# Sweetspot

The Sweet Spot groups the original color and five complimentary colors.



B1999E



E6DCDE



AC99B1



736D6E



F2F2F2



737373



# Same Dimension

The Same Dimension uses a secret algorithm to generate beautiful new colors.



B1999E



E6C1C8



B1A099



595052



990020



1A0005



# Inverse Universe

The Inverse Universe completely reimagines the original color for something new.



B1999E



E6C1C8



99AAB1



595052



990020

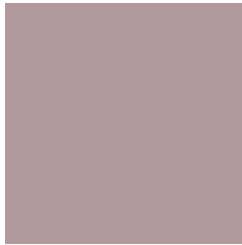


1A0005



# Previews

## White Background



This preview shows how the Hex color B1999E looks on a white background.

## Color Contrast Check

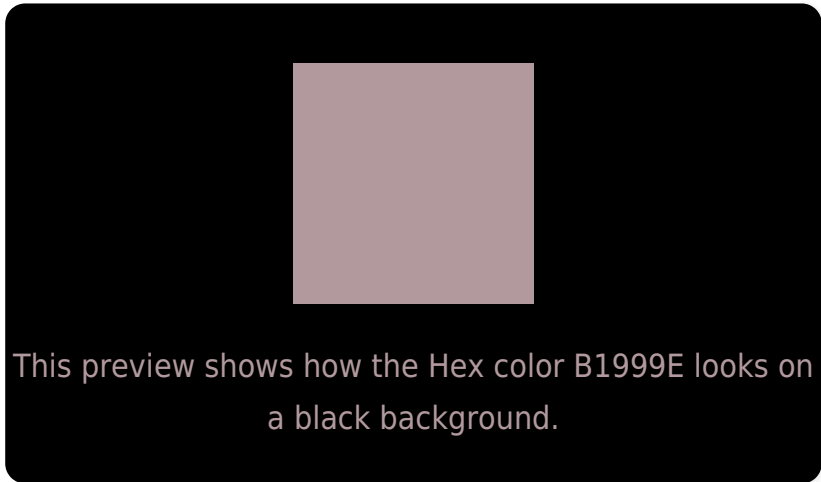
Large Text (above 18pt) WCAG AA × Fail

Any Text WCAG AA × Fail

Large Text (above 18pt) WCAG AAA × Fail

Any Text WCAG AAA × Fail

# Black Background



## Color Contrast Check

Large Text (above 18pt) WCAG AA ✓ Pass

Any Text WCAG AA ✓ Pass

Large Text (above 18pt) WCAG AAA ✓ Pass

Any Text WCAG AAA ✓ Pass

If you want to check with other color combinations, try the [Color Contrast Checker](#).



## Hex B1999E Background



This preview shows how black text looks on a background with the Hex color B1999E.

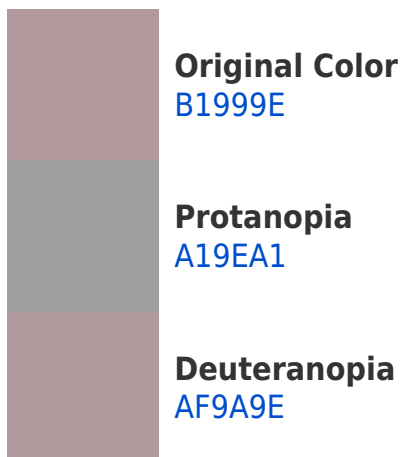


This preview shows how white text looks on a background with the Hex color B1999E.

# Color Blindness Simulation

Color vision deficiency is a very complex topic, and I could not describe the different causes any better than Wikipedia does, so if you want to learn more, you should check out their [article about color blindness](#).

## Dichromacy





**Tritanopia**  
B298A4

# Trichromacy



**Original Color**  
B1999E

**Protanomaly**  
A79CA0

**Deuteranomaly**  
B09A9E

**Tritanomaly**  
B298A2

# Monochromacy



**Original Color**  
B1999E

**Achromatopsia**  
A1A1A1

**Achromatomaly**  
A79EA0

# CSS Examples

## Text

The CSS property to change the color of the text to Hex B1999E is called "color". The color property can be set on classes, ids or directly on the HTML element.

This example shows how text in the color #B1999E looks like.

```
.text, #text, p{  
    color:#B1999E  
}
```

If you want to add a text shadow in that color use the text-shadow property, you can generate a text shadow directly with our [CSS Text Shadow Generator](#).

Here you see how black text with a 4 pixel #B1999E colored shadow looks like.

```
.shadow{ text-shadow: 4px 4px 2px #B1999E
}
```

## Border

The CSS property to change the border of an element to Hex B1999E is called "border". The border property can be set on classes, ids or directly on the HTML element.

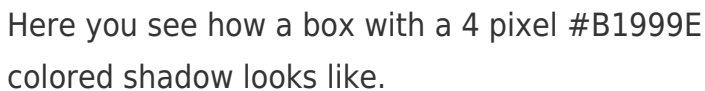
This example shows the color as border, it can be applied via the CSS property "border" or "border-color".

```
.border, #border, table{ border:4px solid
#B1999E }
```

If only the border color should be changed use the property border-color.

```
.border{ border-color:#B1999E }
```

If you want to add a box shadow in that color use:



Here you see how a box with a 4 pixel #B1999E colored shadow looks like.

```
.boxshadow{ -moz-box-shadow:4px 4px 4px  
4px #B1999E; -webkit-box-shadow:4px 4px  
4px 4px #B1999E; box-shadow:4px 4px 4px  
4px #B1999E }
```

# Background

The CSS property to change the background color of an element to Hex B1999E is called "background". The background property can be set on classes, ids or directly on the HTML element.

```
.background, #background, body{  
background:#B1999E }
```

If only the background color should be changed can be used:

```
.background{ background-color:#B1999E }
```

This example shows the color as background, it is applied via the CSS property "background".

To optimize and compress your CSS code, you can use our [online CSS compressor and optimizer](#) based on csstidy. If you want to create a linear or radial gradient as background or border, check our [CSS Gradient Generator](#).



Hey! You found this booklet interesting? Support Converting Colors with the new Membership Option!

The pro membership hides all ads, plus gives you double the colors in the color bucket, and more awesome pro features!

**[Learn more, Memberships starting at \\$2.50/m!](#)**

**Follow me  
on Twitter!**

@ConvertingColor