

Converting Colors

Hex(B26F4E)

Have a look what the booklet for
Hex(B26F4E) contains.

Hex(B26F4E)	3
<i>Conversions</i>	4
<i>Details</i>	6
<i>Harmonies</i>	11
<i>Previews</i>	23
<i>Color Blindness Simulation</i>	26
<i>CSS Examples</i>	29

Color

Hex(B26F4E)

Conversions

Conversions Part 1

Format	Color
Hex	B26F4E
RGB	178, 111, 78
RGB Percent	70%, 44%, 31%
CMY	0.3020, 0.5647, 0.6941
CMYK	0.00, 0.38, 0.56, 0.30
HSL	20°, 39%, 50%
HSV	20°, 56%, 70%
XYZ	25.4197, 21.3839, 9.9955
YIQ	127.2710, 50.5250, 3.9410

Conversions

Conversions Part 2

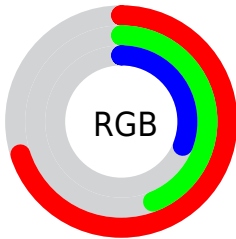
Format	Color
RYB	178, 127, 78
Decimal	11693902
CIELab	53.37, 23.15, 29.38
CIELCh	53, 37.399, 51.766
Yxy	21.3839, 0.4475, 0.3765
Android (android.graphics.Color)	4289883982 (0xFFB26F4E)
YUV	127.2710, -24.2906, 44.4893
Hunter-Lab	46.2427, 17.1968, 19.5543

Details

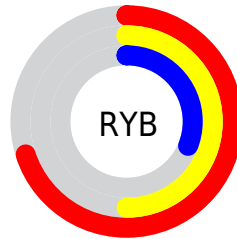
The Hex color **B26F4E** is a dark color, and the websafe version is hex **996633**. A complement of this color would be **4E91B2**, and the grayscale version is **7F7F7F**.

A 20% lighter version of the original color is **EDA380**, and **7A3E20** is the 20% darker color. If you saturate the color by 10%, you get **B2633C**, and if you desaturate by 10%, it is **B27B60**.

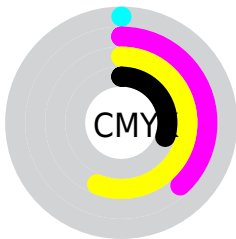
Distribution



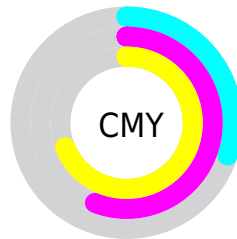
- Red (70%)
- Green (44%)
- Blue (31%)



- Red (70%)
- Yellow (50%)
- Blue (31%)



- Cyan (0%)
- Magenta (38%)
- Yellow (56%)
- Black (30%)



- Cyan (30%)
- Magenta (56%)
- Yellow (69%)

Brightness & Saturation Gradients

These gradients show how the Hex color B26F4E changes by changing the brightness by 10 percent. The first figure shows a shift by +10% for each color and the second figure -10%.

Similar to the brightness gradients but the following saturation gradients show a change of the Hex color B26F4E by changing the saturation by 10% instead.

 B26F4E

 B26F4E

FFFFFF

 965637

 EDA380

 7A3E20

 FFBE9A

 5E280A

 FFDAB5

 441100

 FFF7D0

 2B0000

 FFFFED

 000000

 B26F4E

 B26F4E

 B2633C

 B27B60

 B2572A

 B28772

 B24B19

 B29383

 B23F07

 B29F95

 B23B00

 B2ABA7

 B2B7B9

 B2C2CB

 B2CEDC

 B2DAEE

Harmonies

Analogous

The Analogous color harmony consists of three colors that are next to each other on the color wheel.



BD6669



B26F4E



9B7B3F

Triad

The Triadic color harmony groups three colors that are evenly spaced from another and form a triangle on the color wheel.



B26F4E



1E9075



757ABB

Complementary

The Complementary color scheme is a pair of colors which are on the opposite of each other on the color wheel.



B26F4E



4E91B2

Split Complementary

Split-complementary colors differ from the complementary color scheme. The scheme consists of three colors, the original color and two neighbors of the complement color.



3485BF



B26F4E



009096

Square

The Square scheme is like the rectangle color scheme, but the four colors are evenly spaced on the color wheel.



B26F4E



568C56



008DB1



9F6EA8

Rectangle

The Rectangle color scheme consists of four colors that form a rectangle on the color wheel.



B26F4E



87823F



008DB1



627EBE

Sweetspot

The Sweet Spot groups the original color and five complimentary colors.



B26F4E



E8CEC1



B24E92



75665E



F5F5F5



757575

Same Dimension

The Same Dimension uses a secret algorithm to generate beautiful new colors.



B26F4E



E8804D



B2A04E



595350



993200



1A0800

Inverse Universe

The Inverse Universe completely reimagines the original color for something new.



4E91B2



4DB5E8



4E60B2



505659



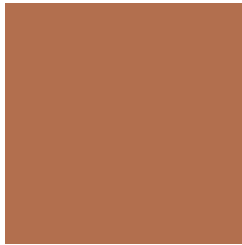
006799



00111A

Previews

White Background



This preview shows how the Hex color B26F4E looks on a white background.

Color Contrast Check

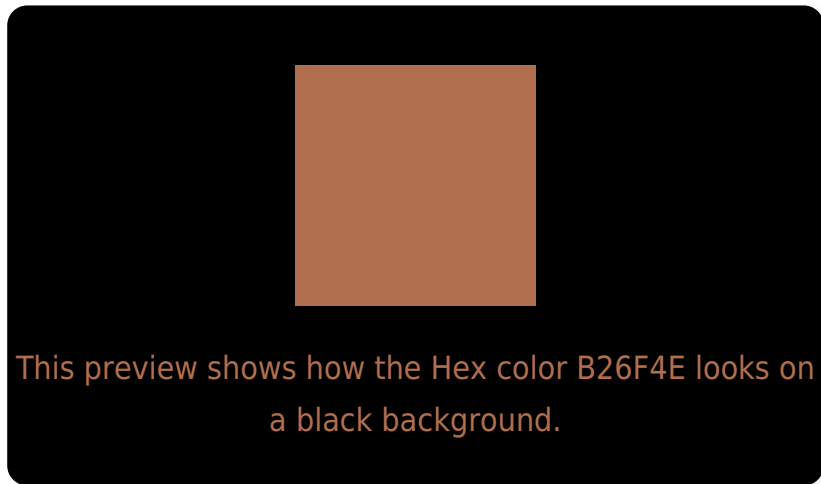
Large Text (above 18pt) WCAG AA ✓ Pass

Any Text WCAG AA × Fail

Large Text (above 18pt) WCAG AAA × Fail

Any Text WCAG AAA × Fail

Black Background



Color Contrast Check

Large Text (above 18pt) WCAG AA ✓ Pass

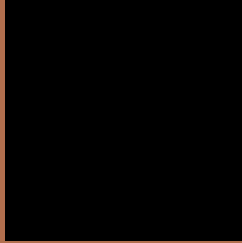
Any Text WCAG AA ✓ Pass

Large Text (above 18pt) WCAG AAA ✓ Pass

Any Text WCAG AAA × Fail

If you want to check with other color combinations, try the [Color Contrast Checker](#).

Hex B26F4E Background



This preview shows how black text looks on a background with the Hex color B26F4E.



This preview shows how white text looks on a background with the Hex color B26F4E.

Color Blindness Simulation

Color vision deficiency is a very complex topic, and I could not describe the different causes any better than Wikipedia does, so if you want to learn more, you should check out their [article about color blindness](#).

Dichromacy



Original Color
B26F4E

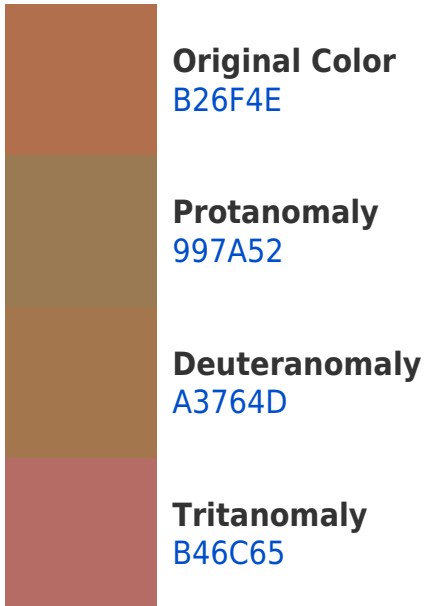
Protanopia
8B8055

Deuteranopia
9B7A4C



Tritanopia
B56A72

Trichromacy



Monochromacy



CSS Examples

Text

The CSS property to change the color of the text to Hex B26F4E is called "color". The color property can be set on classes, ids or directly on the HTML element.

This example shows how text in the color #B26F4E looks like.

```
.text, #text, p{  
    color:#B26F4E  
}
```

If you want to add a text shadow in that color use the text-shadow property, you can generate a text shadow directly with our [CSS Text Shadow Generator](#).

Here you see how black text with a 4 pixel #B26F4E colored shadow looks like.

```
.shadow{ text-shadow: 4px 4px 2px #B26F4E
}
```

Border

The CSS property to change the border of an element to Hex B26F4E is called "border". The border property can be set on classes, ids or directly on the HTML element.

This example shows the color as border, it can be applied via the CSS property "border" or "border-color".

```
.border, #border, table{ border:4px solid
#B26F4E }
```

If only the border color should be changed use the property `border-color`.

```
.border{ border-color:#B26F4E }
```

If you want to add a box shadow in that color use:

Here you see how a box with a 4 pixel #B26F4E colored shadow looks like.

```
.boxshadow{ -moz-box-shadow:4px 4px 4px  
4px #B26F4E; -webkit-box-shadow:4px 4px  
4px 4px #B26F4E; box-shadow:4px 4px 4px  
4px #B26F4E }
```

Background

The CSS property to change the background color of an element to Hex B26F4E is called "background". The background property can be set on classes, ids or directly on the HTML element.

```
.background, #background, body{  
background:#B26F4E }
```

If only the background color should be changed can be used:

```
.background{ background-color:#B26F4E }
```

This example shows the color as background, it is applied via the CSS property "background".

To optimize and compress your CSS code, you can use our [online CSS compressor and optimizer](#) based on csstidy. If you want to create a linear or radial gradient as background or border, check our [CSS Gradient Generator](#).

Hey! You found this booklet interesting? Support Converting Colors with the new Membership Option!

The pro membership hides all ads, plus gives you double the colors in the color bucket, and more awesome pro features!

[Learn more, Memberships starting at \\$2.50/m!](#)

**Follow me
on Twitter!**

@ConvertingColor