

Converting Colors

Hex(B27179)

Have a look what the booklet for
Hex(B27179) contains.

Hex(B27179)	3
<i>Conversions</i>	4
<i>Details</i>	6
<i>Harmonies</i>	11
<i>Previews</i>	23
<i>Color Blindness Simulation</i>	26
<i>CSS Examples</i>	29

Color

Hex(B27179)

Conversions

Conversions Part 1

Format	Color
Hex	B27179
RGB	178, 113, 121
RGB Percent	70%, 44%, 47%
CMY	0.3020, 0.5569, 0.5255
CMYK	0.00, 0.37, 0.32, 0.30
HSL	353°, 30%, 57%
HSV	353°, 37%, 70%
XYZ	27.7164, 22.6557, 21.0013
YIQ	133.3470, 36.1720, 16.2680

Conversions

Conversions Part 2

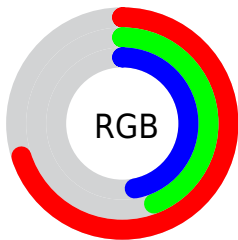
Format	Color
R_{YB}	178, 113, 121
Decimal	11694457
CIE _{Lab}	54.72, 26.76, 6.37
CIE _{LCh}	55, 27.503, 13.388
Yxy	22.6557, 0.3883, 0.3174
Android (android.graphics.Color)	4289884537 (0xFFB27179)
YUV	133.3470, -6.0871, 39.1607
Hunter-Lab	47.5980, 20.6444, 7.1585

Details

The Hex color **B27179** is a dark color, and the websafe version is hex **996666**. A complement of this color would be **71B2AA**, and the grayscale version is **858585**.

A 20% lighter version of the original color is **EBA6AD**, and **7B4049** is the 20% darker color. If you saturate the color by 10%, you get **B25F69**, and if you desaturate by 10%, it is **B28389**.

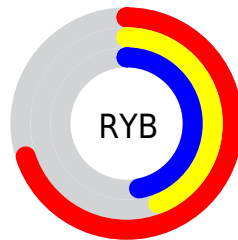
Distribution



Red (70%)

Green (44%)

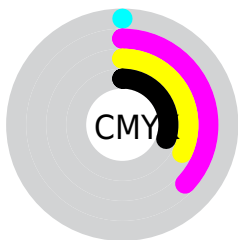
Blue (47%)



Red (70%)

Yellow (44%)

Blue (47%)

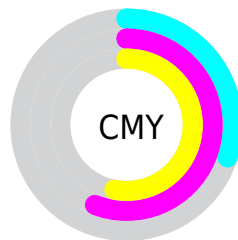


Cyan (0%)

Magenta (37%)

Yellow (32%)

Black (30%)



Cyan (30%)

Magenta (56%)

Yellow (53%)

Brightness & Saturation Gradients

These gradients show how the Hex color B27179 changes by changing the brightness by 10 percent. The first figure shows a shift by +10% for each color and the second figure -10%.

Similar to the brightness gradients but the following saturation gradients show a change of the Hex color B27179 by changing the saturation by 10% instead.

 B27179

 B27179

FFFFFF

 965860

 EBA6AD

 7B4049

 FFC1C9

 612832

 FFDDE5

 48111D

 FFFAFF

 300003

 0A0000

 000000

 B27179

 B27179

 B25F69

 B28389

 B24D5A

 B29598

 B23C4A

 B2A6A8

 B22A3B

 B2B8B7

 B2182B

 B2CAC7

 B2061B

 B2DCD7

 B20016

 B2EEE6

 B2FFF6

 B2FFFF

Harmonies

Analogous

The Analogous color harmony consists of three colors that are next to each other on the color wheel.



A97291



B27179



AE7563

Triad

The Triadic color harmony groups three colors that are evenly spaced from another and form a triangle on the color wheel.



B27179



6E8B60



4E89B0

Complementary

The Complementary color scheme is a pair of colors which are on the opposite of each other on the color wheel.



B27179



71B2AA

Split Complementary

Split-complementary colors differ from the complementary color scheme. The scheme consists of three colors, the original color and two neighbors of the complement color.



328EA3



B27179



518F75

Square

The Square scheme is like the rectangle color scheme, but the four colors are evenly spaced on the color wheel.



B27179



898554



37908D



7382B1

Rectangle

The Rectangle color scheme consists of four colors that form a rectangle on the color wheel.



B27179



A57A59



37908D



428BAD

Sweetspot

The Sweet Spot groups the original color and five complimentary colors.



B27179



E8CFD2



A971B2



756668



F5F5F5



757575

Same Dimension

The Same Dimension uses a secret algorithm to generate beautiful new colors.



B27179



E8828F



B28971



595051



990013



1A0003

Inverse Universe

The Inverse Universe completely reimagines the original color for something new.



B27179



E8828F



719AB2



595051



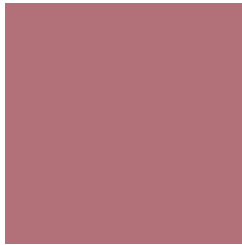
990013



1A0003

Previews

White Background



This preview shows how the Hex color B27179 looks on a white background.

Color Contrast Check

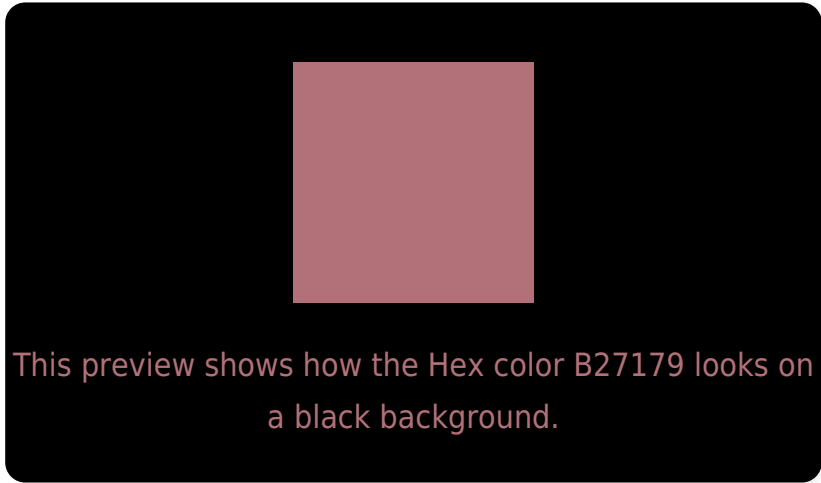
Large Text (above 18pt) WCAG AA ✓ Pass

Any Text WCAG AA × Fail

Large Text (above 18pt) WCAG AAA × Fail

Any Text WCAG AAA × Fail

Black Background



Color Contrast Check

Large Text (above 18pt) WCAG AA ✓ Pass

Any Text WCAG AA ✓ Pass

Large Text (above 18pt) WCAG AAA ✓ Pass

Any Text WCAG AAA × Fail

If you want to check with other color combinations, try the [Color Contrast Checker](#).

Hex B27179 Background



This preview shows how black text looks on a background with the Hex color B27179.



This preview shows how white text looks on a background with the Hex color B27179.

Color Blindness Simulation

Color vision deficiency is a very complex topic, and I could not describe the different causes any better than Wikipedia does, so if you want to learn more, you should check out their [article about color blindness](#).

Dichromacy





Tritanopia
B27179

Trichromacy



Original Color
B27179

Protanomaly
967C7F

Deuteranomaly
A07A78

Tritanomaly
B27179

Monochromacy



Original Color
B27179

Achromatopsia
858585

Achromatomaly
957E81

CSS Examples

Text

The CSS property to change the color of the text to Hex B27179 is called "color". The color property can be set on classes, ids or directly on the HTML element.

This example shows how text in the color #B27179 looks like.

```
.text, #text, p{  
    color:#B27179  
}
```

If you want to add a text shadow in that color use the text-shadow property, you can generate a text shadow directly with our [CSS Text Shadow Generator](#).

Here you see how black text with a 4 pixel #B27179 colored shadow looks like.

```
.shadow{ text-shadow: 4px 4px 2px #B27179
}
```

Border

The CSS property to change the border of an element to Hex B27179 is called "border". The border property can be set on classes, ids or directly on the HTML element.

This example shows the color as border, it can be applied via the CSS property "border" or "border-color".

```
.border, #border, table{ border:4px solid
#B27179 }
```

If only the border color should be changed use the property border-color.

```
.border{ border-color:#B27179 }
```

If you want to add a box shadow in that color use:

Here you see how a box with a 4 pixel #B27179 colored shadow looks like.

```
.boxshadow{ -moz-box-shadow:4px 4px 4px  
4px #B27179; -webkit-box-shadow:4px 4px  
4px 4px #B27179; box-shadow:4px 4px 4px  
4px #B27179 }
```

Background

The CSS property to change the background color of an element to Hex B27179 is called "background". The background property can be set on classes, ids or directly on the HTML element.

```
.background, #background, body{  
background:#B27179 }
```

If only the background color should be changed can be used:

```
.background{ background-color:#B27179 }
```

This example shows the color as background, it is applied via the CSS property "background".

To optimize and compress your CSS code, you can use our [online CSS compressor and optimizer](#) based on csstidy. If you want to create a linear or radial gradient as background or border, check our [CSS Gradient Generator](#).

Hey! You found this booklet interesting? Support Converting Colors with the new Membership Option!

The pro membership hides all ads, plus gives you double the colors in the color bucket, and more awesome pro features!

[Learn more, Memberships starting at \\$2.50/m!](#)

**Follow me
on Twitter!**

@ConvertingColor