

Converting Colors

Hex(B27547)

Have a look what the booklet for
Hex(B27547) contains.

Hex(B27547)	3
<i>Conversions</i>	4
<i>Details</i>	6
<i>Harmonies</i>	11
<i>Previews</i>	23
<i>Color Blindness Simulation</i>	26
<i>CSS Examples</i>	29

Color

Hex(B27547)

Conversions

Conversions Part 1

Format	Color
Hex	B27547
RGB	178, 117, 71
RGB Percent	70%, 46%, 28%
CMY	0.3020, 0.5412, 0.7216
CMYK	0.00, 0.34, 0.60, 0.30
HSL	26°, 43%, 49%
HSV	26°, 60%, 70%
XYZ	25.8587, 22.6425, 8.9688
YIQ	129.9950, 51.1220, -1.3740

Conversions

Conversions Part 2

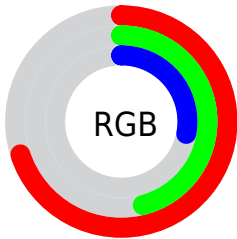
Format	Color
RYB	178, 152, 71
Decimal	11695431
CIELab	54.70, 19.24, 34.88
CIELCh	55, 39.832, 61.125
Yxy	22.6425, 0.4500, 0.3940
Android (android.graphics.Color)	4289885511 (0xFFB27547)
YUV	129.9950, -29.0845, 42.1004
Hunter-Lab	47.5841, 13.7303, 22.1338

Details

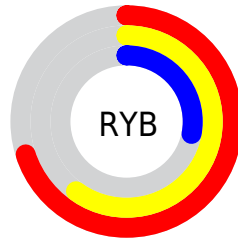
The Hex color **B27547** is a dark color, and the websafe version is hex **996633**. A complement of this color would be **4784B2**, and the grayscale version is **828282**.

A 20% lighter version of the original color is **EDA979**, and **7A4419** is the 20% darker color. If you saturate the color by 10%, you get **B26B35**, and if you desaturate by 10%, it is **B27F59**.

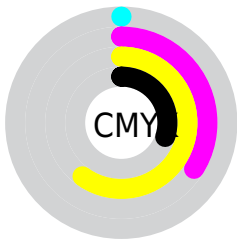
Distribution



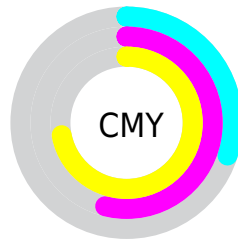
- Red (70%)
- Green (46%)
- Blue (28%)



- Red (70%)
- Yellow (60%)
- Blue (28%)



- Cyan (0%)
- Magenta (34%)
- Yellow (60%)
- Black (30%)



- Cyan (30%)
- Magenta (54%)
- Yellow (72%)

Brightness & Saturation Gradients

These gradients show how the Hex color B27547 changes by changing the brightness by 10 percent. The first figure shows a shift by +10% for each color and the second figure -10%.

Similar to the brightness gradients but the following saturation gradients show a change of the Hex color B27547 by changing the saturation by 10% instead.

 B27547

 B27547

FFFFFF

 955C30

 EDA979

 7A4419

 FFC593

 5E2E00

 FFE1AD

 441800

 FFFDC9

 2A0100

 FFFFEE

 000000

 B27547

 B27547

 B26B35

 B27F59

 B26123

 B2896B

 B25712

 B2937C

 B24D00

 B29E8E

 B2A8A0

 B2B2B2

 B2BCC4

 B2C6D5

 B2D0E7

Harmonies

Analogous

The Analogous color harmony consists of three colors that are next to each other on the color wheel.



C26A61



B27547



96813C

Triad

The Triadic color harmony groups three colors that are evenly spaced from another and form a triangle on the color wheel.



B27547



009483



8779BE

Complementary

The Complementary color scheme is a pair of colors which are on the opposite of each other on the color wheel.



B27547



4784B2

Split Complementary

Split-complementary colors differ from the complementary color scheme. The scheme consists of three colors, the original color and two neighbors of the complement color.



4A86C8



B27547



0094A5

Square

The Square scheme is like the rectangle color scheme, but the four colors are evenly spaced on the color wheel.



B27547



479260



008FBF



AF6DA5

Rectangle

The Rectangle color scheme consists of four colors that form a rectangle on the color wheel.



B27547



808840



008FBF



767EC3

Sweetspot

The Sweet Spot groups the original color and five complimentary colors.



B27547



E8D0BE



B24785



75675B



F5F5F5



757575

Same Dimension

The Same Dimension uses a secret algorithm to generate beautiful new colors.



B27547



E88941



B2A947



595450



994200



1A0B00

Inverse Universe

The Inverse Universe completely reimagines the original color for something new.



4784B2



41A0E8



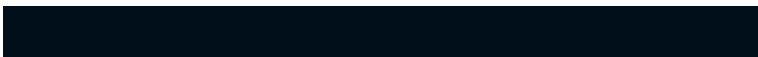
4750B2



505559



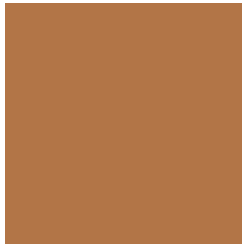
005799



000F1A

Previews

White Background



This preview shows how the Hex color B27547 looks on a white background.

Color Contrast Check

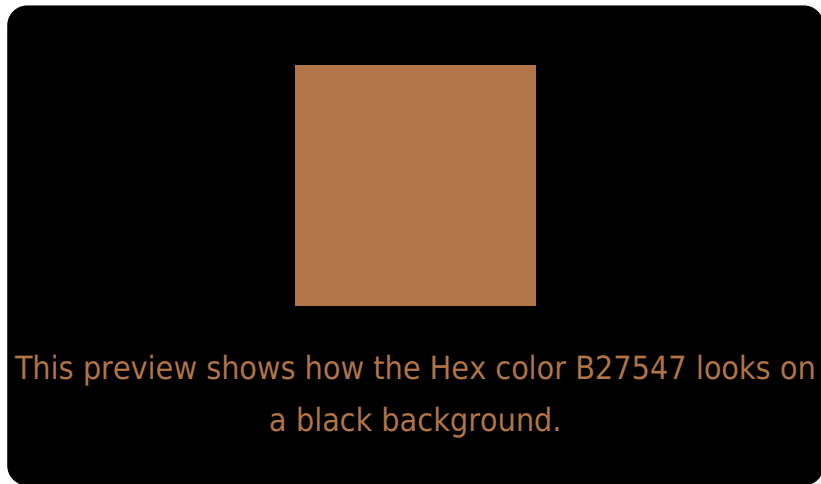
Large Text (above 18pt) WCAG AA ✓ Pass

Any Text WCAG AA × Fail

Large Text (above 18pt) WCAG AAA × Fail

Any Text WCAG AAA × Fail

Black Background



Color Contrast Check

Large Text (above 18pt) WCAG AA ✓ Pass

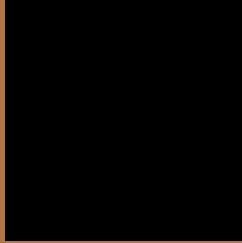
Any Text WCAG AA ✓ Pass

Large Text (above 18pt) WCAG AAA ✓ Pass

Any Text WCAG AAA × Fail

If you want to check with other color combinations, try the [Color Contrast Checker](#).

Hex B27547 Background



This preview shows how black text looks on a background with the Hex color B27547.



This preview shows how white text looks on a background with the Hex color B27547.

Color Blindness Simulation

Color vision deficiency is a very complex topic, and I could not describe the different causes any better than Wikipedia does, so if you want to learn more, you should check out their [article about color blindness](#).

Dichromacy



Original Color
B27547

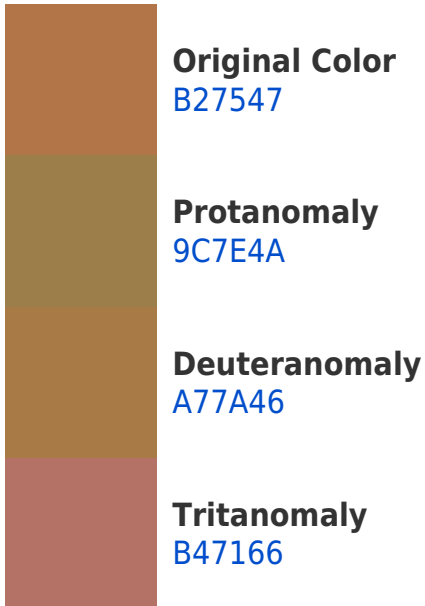
Protanopia
90834C

Deuteranopia
A17D45

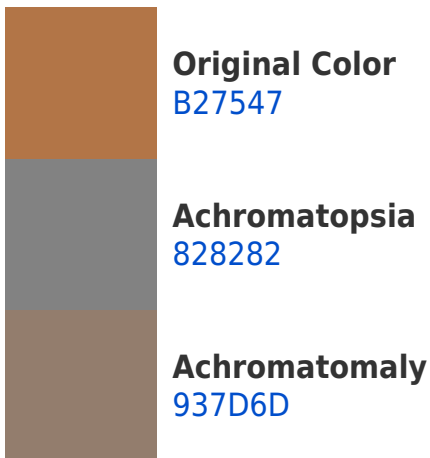


Tritanopia
B56F77

Trichromacy



Monochromacy



CSS Examples

Text

The CSS property to change the color of the text to Hex B27547 is called "color". The color property can be set on classes, ids or directly on the HTML element.

This example shows how text in the color #B27547 looks like.

```
.text, #text, p{  
    color:#B27547  
}
```

If you want to add a text shadow in that color use the text-shadow property, you can generate a text shadow directly with our [CSS Text Shadow Generator](#).

Here you see how black text with a 4 pixel #B27547 colored shadow looks like.

```
.shadow{ text-shadow: 4px 4px 2px #B27547
}
```

Border

The CSS property to change the border of an element to Hex B27547 is called "border". The border property can be set on classes, ids or directly on the HTML element.

This example shows the color as border, it can be applied via the CSS property "border" or "border-color".

```
.border, #border, table{ border:4px solid
#B27547 }
```

If only the border color should be changed use the property `border-color`.

```
.border{ border-color:#B27547 }
```

If you want to add a box shadow in that color use:

Here you see how a box with a 4 pixel #B27547 colored shadow looks like.

```
.boxshadow{ -moz-box-shadow:4px 4px 4px  
4px #B27547; -webkit-box-shadow:4px 4px  
4px 4px #B27547; box-shadow:4px 4px 4px  
4px #B27547 }
```

Background

The CSS property to change the background color of an element to Hex B27547 is called "background". The background property can be set on classes, ids or directly on the HTML element.

```
.background, #background, body{  
background:#B27547 }
```

If only the background color should be changed can be used:

```
.background{ background-color:#B27547 }
```

This example shows the color as background, it is applied via the CSS property "background".

To optimize and compress your CSS code, you can use our [online CSS compressor and optimizer](#) based on csstidy. If you want to create a linear or radial gradient as background or border, check our [CSS Gradient Generator](#).

Hey! You found this booklet interesting? Support Converting Colors with the new Membership Option!

The pro membership hides all ads, plus gives you double the colors in the color bucket, and more awesome pro features!

[Learn more, Memberships starting at \\$2.50/m!](#)

**Follow me
on Twitter!**

@ConvertingColor