

# Converting Colors

Hex(B27775)

Have a look what the booklet for  
Hex(B27775) contains.

<b>Hex(B27775)</b> .....	3
<b><i>Conversions</i></b> .....	4
<b><i>Details</i></b> .....	6
<b><i>Harmonies</i></b> .....	11
<b><i>Previews</i></b> .....	23
<b><i>Color Blindness Simulation</i></b> .....	26
<b><i>CSS Examples</i></b> .....	29

**Color**

**Hex(B27775)**

# Conversions

## Conversions Part 1

<b>Format</b>	<b>Color</b>
Hex	B27775
RGB	178, 119, 117
RGB Percent	70%, 47%, 46%
CMY	0.3020, 0.5333, 0.5412
CMYK	0.00, 0.33, 0.34, 0.30
HSL	2°, 28%, 58%
HSV	2°, 34%, 70%
XYZ	28.1678, 23.9430, 19.9665
YIQ	136.4130, 35.8060, 11.8860

# Conversions

## Conversions Part 2

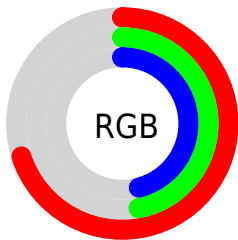
Format	Color
<b>RYB</b>	178, 119, 117
Decimal	11695989
CIELab	56.03, 22.88, 10.56
CIElCh	56, 25.201, 24.786
Yxy	23.9430, 0.3908, 0.3322
Android (android.graphics.Color)	4289886069 (0xFFB27775)
YUV	136.4130, -9.5706, 36.4718
Hunter-Lab	48.9316, 17.1246, 10.0589

# Details

The Hex color **B27775** is a dark color, and the websafe version is hex **996666**. A complement of this color would be **75B0B2**, and the grayscale version is **888888**.

A 20% lighter version of the original color is **EBACA9**, and **7B4645** is the 20% darker color. If you saturate the color by 10%, you get **B26663**, and if you desaturate by 10%, it is **B28887**.

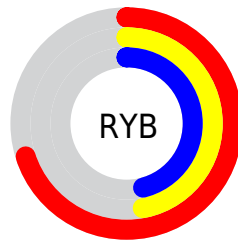
# Distribution



Red (70%)

Green (47%)

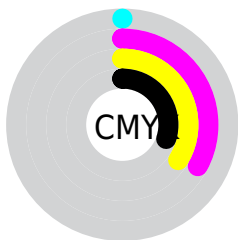
Blue (46%)



Red (70%)

Yellow (47%)

Blue (46%)

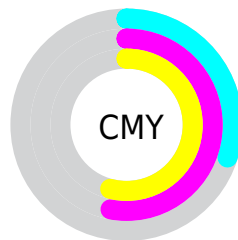


Cyan (0%)

Magenta (33%)

Yellow (34%)

Black (30%)



Cyan (30%)

Magenta (53%)

Yellow (54%)

# Brightness & Saturation Gradients

These gradients show how the Hex color B27775 changes by changing the brightness by 10 percent. The first figure shows a shift by +10% for each color and the second figure -10%.

Similar to the brightness gradients but the following saturation gradients show a change of the Hex color B27775 by changing the saturation by 10% instead.



 B27775

 B27775

FFFFFF

 965E5C

 EBACA9

 7B4645

 FFC7C4

 612F2F

 FFE3E0

 48181A

FFFFFFD

 300200

 0E0000

 000000

 B27775

 B27775

 B26663

 B28887

 B25551

 B29999

 B24340

 B2ABAA

 B2322E

 B2BCBC

 B2211C

 B2CDCE

 B2100A

 B2DEE0

 B20600

 B2F0F2

 B2FFFF

# Harmonies

## Analogous

The Analogous color harmony consists of three colors that are next to each other on the color wheel.



AE768B



B27775



AA7C63

# Triad

The Triadic color harmony groups three colors that are evenly spaced from another and form a triangle on the color wheel.



B27775



6A906C



648AB1

# Complementary

The Complementary color scheme is a pair of colors which are on the opposite of each other on the color wheel.



B27775



75B0B2

# Split Complementary

Split-complementary colors differ from the complementary color scheme. The scheme consists of three colors, the original color and two neighbors of the complement color.



488FA9



B27775



519282

# Square

The Square scheme is like the rectangle color scheme, but the four colors are evenly spaced on the color wheel.



B27775



838B5E



409298



8482AE

# Rectangle

The Rectangle color scheme consists of four colors that form a rectangle on the color wheel.



B27775



A0815C



409298



598CB0



# Sweetspot

The Sweet Spot groups the original color and five complimentary colors.



B27775



E8D2D1



B275B1



756867



F5F5F5



757575



# Same Dimension

The Same Dimension uses a secret algorithm to generate beautiful new colors.



B27775



E88C89



B29575



595150



990500



1A0100



# Inverse Universe

The Inverse Universe completely reimagines the original color for something new.



75B0B2



89E5E8



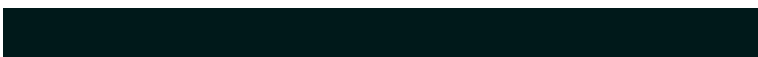
7592B2



505959



009499

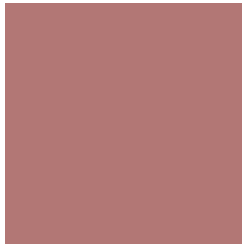


00191A



# Previews

## White Background



This preview shows how the Hex color B27775 looks on a white background.

## Color Contrast Check

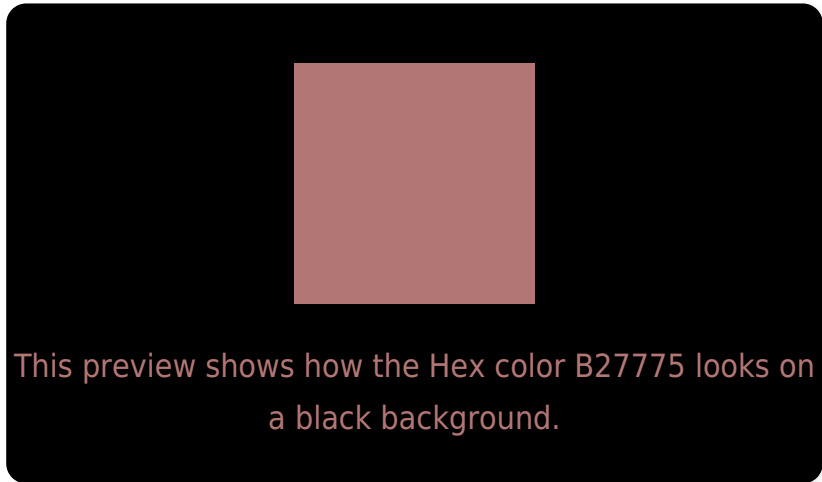
Large Text (above 18pt) WCAG AA ✓ Pass

Any Text WCAG AA × Fail

Large Text (above 18pt) WCAG AAA × Fail

Any Text WCAG AAA × Fail

# Black Background



## Color Contrast Check

Large Text (above 18pt) WCAG AA ✓ Pass

Any Text WCAG AA ✓ Pass

Large Text (above 18pt) WCAG AAA ✓ Pass

Any Text WCAG AAA × Fail

If you want to check with other color combinations, try the [Color Contrast Checker](#).



## Hex B27775 Background



This preview shows how black text looks on a background with the Hex color B27775.



This preview shows how white text looks on a background with the Hex color B27775.

# Color Blindness Simulation

Color vision deficiency is a very complex topic, and I could not describe the different causes any better than Wikipedia does, so if you want to learn more, you should check out their [article about color blindness](#).

## Dichromacy



**Original Color**  
B27775

**Protanopia**  
8B867D

**Deuteranopia**  
9B8273



**Tritanopia**  
B3767E

# Trichromacy



**Original Color**  
B27775

**Protanomaly**  
99817A

**Deuteranomaly**  
A37E74

**Tritanomaly**  
B3767B

# Monochromacy



**Original Color**  
B27775

**Achromatopsia**  
888888

**Achromatomaly**  
978281

# CSS Examples

## Text

The CSS property to change the color of the text to Hex B27775 is called "color". The color property can be set on classes, ids or directly on the HTML element.

This example shows how text in the color #B27775 looks like.

```
.text, #text, p{  
    color:#B27775  
}
```

If you want to add a text shadow in that color use the text-shadow property, you can generate a text shadow directly with our [CSS Text Shadow Generator](#).

Here you see how black text with a 4 pixel #B27775 colored shadow looks like.

```
.shadow{ text-shadow: 4px 4px 2px #B27775
}
```

## Border

The CSS property to change the border of an element to Hex B27775 is called "border". The border property can be set on classes, ids or directly on the HTML element.

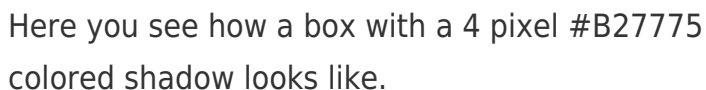
This example shows the color as border, it can be applied via the CSS property "border" or "border-color".

```
.border, #border, table{ border:4px solid
#B27775 }
```

If only the border color should be changed use the property `border-color`.

```
.border{ border-color:#B27775 }
```

If you want to add a box shadow in that color use:



Here you see how a box with a 4 pixel `#B27775` colored shadow looks like.

```
.boxshadow{ -moz-box-shadow:4px 4px 4px  
4px #B27775; -webkit-box-shadow:4px 4px  
4px 4px #B27775; box-shadow:4px 4px 4px  
4px #B27775 }
```

# Background

The CSS property to change the background color of an element to Hex B27775 is called "background". The background property can be set on classes, ids or directly on the HTML element.

```
.background, #background, body{  
background:#B27775 }
```

If only the background color should be changed can be used:

```
.background{ background-color:#B27775 }
```

This example shows the color as background, it is applied via the CSS property "background".

To optimize and compress your CSS code, you can use our [online CSS compressor and optimizer](#) based on csstidy. If you want to create a linear or radial gradient as background or border, check our [CSS Gradient Generator](#).



Hey! You found this booklet interesting? Support Converting Colors with the new Membership Option!

The pro membership hides all ads, plus gives you double the colors in the color bucket, and more awesome pro features!

**[Learn more, Memberships starting at \\$2.50/m!](#)**

**Follow me  
on Twitter!**

@ConvertingColor