

Converting Colors

Hex(B2784C)

Have a look what the booklet for
Hex(B2784C) contains.

Hex(B2784C)	3
<i>Conversions</i>	4
<i>Details</i>	6
<i>Harmonies</i>	11
<i>Previews</i>	23
<i>Color Blindness Simulation</i>	26
<i>CSS Examples</i>	29

Color

Hex(B2784C)

Conversions

Conversions Part 1

Format	Color
Hex	B2784C
RGB	178, 120, 76
RGB Percent	70%, 47%, 30%
CMY	0.3020, 0.5294, 0.7020
CMYK	0.00, 0.33, 0.57, 0.30
HSL	26°, 40%, 50%
HSV	26°, 57%, 70%
XYZ	26.3811, 23.4197, 9.9675
YIQ	132.3260, 48.6920, -1.3880

Conversions

Conversions Part 2

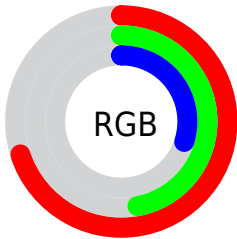
Format	Color
RYB	178, 153, 76
Decimal	11696204
CIELab	55.50, 17.95, 33.14
CIELCh	56, 37.693, 61.554
Yxy	23.4197, 0.4414, 0.3918
Android (android.graphics.Color)	4289886284 (0xFFB2784C)
YUV	132.3260, -27.7687, 40.0561
Hunter-Lab	48.3939, 12.6167, 21.6640

Details

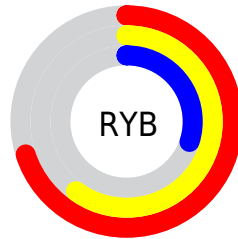
The Hex color **B2784C** is a dark color, and the websafe version is hex **996633**. A complement of this color would be **4C86B2**, and the grayscale version is **858585**.

A 20% lighter version of the original color is **ECAC7E**, and **7A471E** is the 20% darker color. If you saturate the color by 10%, you get **B26E3A**, and if you desaturate by 10%, it is **B2825E**.

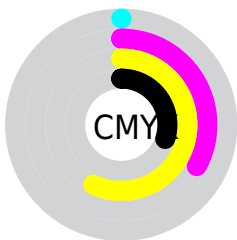
Distribution



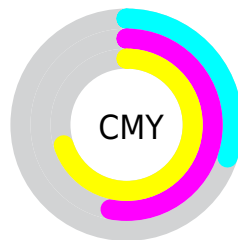
- Red (70%)
- Green (47%)
- Blue (30%)



- Red (70%)
- Yellow (60%)
- Blue (30%)



- Cyan (0%)
- Magenta (33%)
- Yellow (57%)
- Black (30%)



- Cyan (30%)
- Magenta (53%)
- Yellow (70%)

Brightness & Saturation Gradients

These gradients show how the Hex color B2784C changes by changing the brightness by 10 percent. The first figure shows a shift by +10% for each color and the second figure -10%.

Similar to the brightness gradients but the following saturation gradients show a change of the Hex color B2784C by changing the saturation by 10% instead.

 B2784C

 B2784C

FFFFFF

 965F34

 ECAC7E

 7A471E

 FFC898

 5F3006

 FFE4B3

 451B00

 FFFFCE

 2B0500

 FFFFEB

 000000

 B2784C

 B2784C

 B26E3A

 B2825E

 B26428

 B28C70

 B25A17

 B29681

 B25005

 B2A093

 B24D00

 B2ABA5

 B2B5B7

 B2BFC9

 B2C9DA

 B2D3EC

Harmonies

Analogous

The Analogous color harmony consists of three colors that are next to each other on the color wheel.



C16E64



B2784C



978442

Triad

The Triadic color harmony groups three colors that are evenly spaced from another and form a triangle on the color wheel.



B2784C



009686



8A7CBD

Complementary

The Complementary color scheme is a pair of colors which are on the opposite of each other on the color wheel.



B2784C



4C86B2

Split Complementary

Split-complementary colors differ from the complementary color scheme. The scheme consists of three colors, the original color and two neighbors of the complement color.



5388C6



B2784C



0095A6

Square

The Square scheme is like the rectangle color scheme, but the four colors are evenly spaced on the color wheel.



B2784C



4D9365



0090BE



AF70A5

Rectangle

The Rectangle color scheme consists of four colors that form a rectangle on the color wheel.



B2784C



828A46



0090BE



7A80C2

Sweetspot

The Sweet Spot groups the original color and five complimentary colors.



B2784C



E8D2C1



B24C87



75685E



F5F5F5



757575

Same Dimension

The Same Dimension uses a secret algorithm to generate beautiful new colors.



B2784C



E88D48



B2AA4C



595450



994200



1A0B00

Inverse Universe

The Inverse Universe completely reimagines the original color for something new.



4C86B2



48A3E8



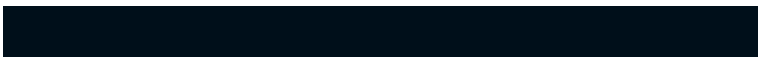
4C54B2



505559



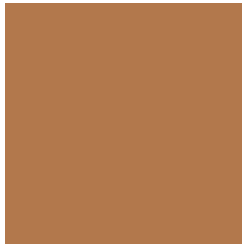
005799



000F1A

Previews

White Background



This preview shows how the Hex color B2784C looks on a white background.

Color Contrast Check

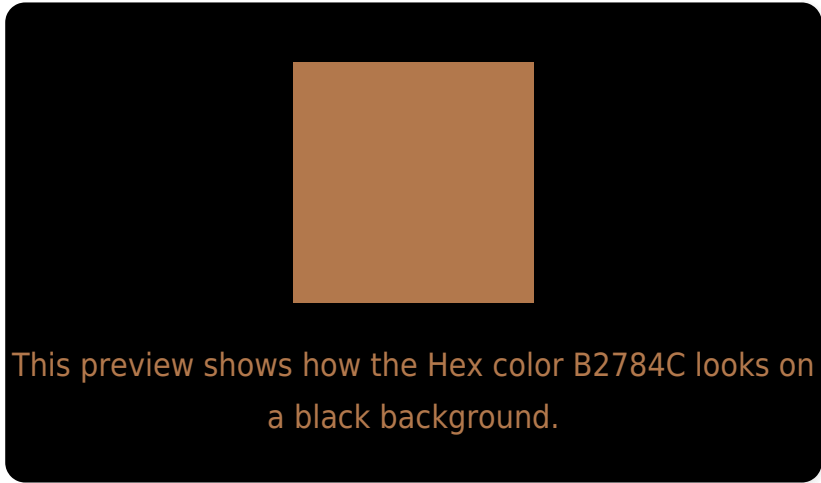
Large Text (above 18pt) WCAG AA ✓ Pass

Any Text WCAG AA × Fail

Large Text (above 18pt) WCAG AAA × Fail

Any Text WCAG AAA × Fail

Black Background



Color Contrast Check

Large Text (above 18pt) WCAG AA ✓ Pass

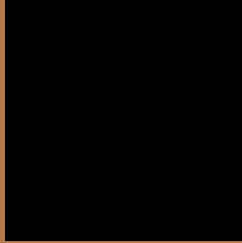
Any Text WCAG AA ✓ Pass

Large Text (above 18pt) WCAG AAA ✓ Pass

Any Text WCAG AAA × Fail

If you want to check with other color combinations, try the [Color Contrast Checker](#).

Hex B2784C Background



This preview shows how black text looks on a background with the Hex color B2784C.



This preview shows how white text looks on a background with the Hex color B2784C.

Color Blindness Simulation

Color vision deficiency is a very complex topic, and I could not describe the different causes any better than Wikipedia does, so if you want to learn more, you should check out their [article about color blindness](#).

Dichromacy



Original Color
B2784C

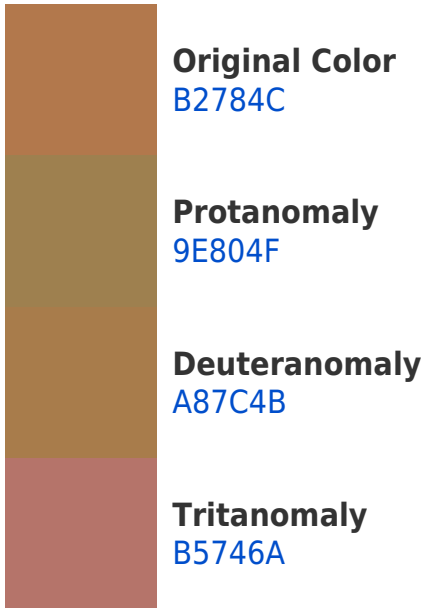
Protanopia
928551

Deuteranopia
A37F4A

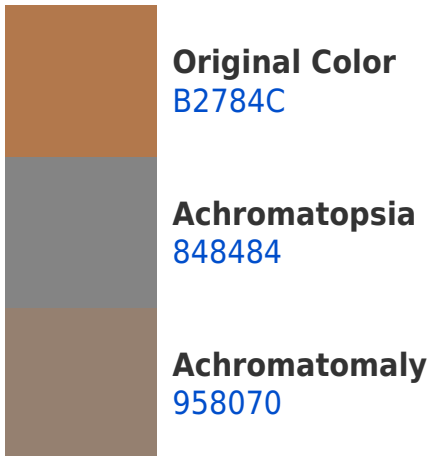


Tritanopia
B6727B

Trichromacy



Monochromacy



CSS Examples

Text

The CSS property to change the color of the text to Hex B2784C is called "color". The color property can be set on classes, ids or directly on the HTML element.

This example shows how text in the color #B2784C looks like.

```
.text, #text, p{  
    color:#B2784C  
}
```

If you want to add a text shadow in that color use the text-shadow property, you can generate a text shadow directly with our [CSS Text Shadow Generator](#).

Here you see how black text with a 4 pixel #B2784C colored shadow looks like.

```
.shadow{ text-shadow: 4px 4px 2px #B2784C
}
```

Border

The CSS property to change the border of an element to Hex B2784C is called "border". The border property can be set on classes, ids or directly on the HTML element.

This example shows the color as border, it can be applied via the CSS property "border" or "border-color".

```
.border, #border, table{ border:4px solid
#B2784C }
```

If only the border color should be changed use the property border-color.

```
.border{ border-color:#B2784C }
```

If you want to add a box shadow in that color use:

Here you see how a box with a 4 pixel #B2784C colored shadow looks like.

```
.boxshadow{ -moz-box-shadow:4px 4px 4px  
4px #B2784C; -webkit-box-shadow:4px 4px  
4px 4px #B2784C; box-shadow:4px 4px 4px  
4px #B2784C }
```

Background

The CSS property to change the background color of an element to Hex B2784C is called "background". The background property can be set on classes, ids or directly on the HTML element.

```
.background, #background, body{  
background:#B2784C }
```

If only the background color should be changed can be used:

```
.background{ background-color:#B2784C }
```

This example shows the color as background, it is applied via the CSS property "background".

To optimize and compress your CSS code, you can use our [online CSS compressor and optimizer](#) based on csstidy. If you want to create a linear or radial gradient as background or border, check our [CSS Gradient Generator](#).

Hey! You found this booklet interesting? Support Converting Colors with the new Membership Option!

The pro membership hides all ads, plus gives you double the colors in the color bucket, and more awesome pro features!

[Learn more, Memberships starting at \\$2.50/m!](#)

**Follow me
on Twitter!**

@ConvertingColor