

# Converting Colors

Hex(B28285)

Have a look what the booklet for  
Hex(B28285) contains.

<b>Hex(B28285)</b> .....	3
<i><b>Conversions</b></i> .....	4
<i><b>Details</b></i> .....	6
<i><b>Harmonies</b></i> .....	11
<i><b>Previews</b></i> .....	23
<i><b>Color Blindness Simulation</b></i> .....	26
<i><b>CSS Examples</b></i> .....	29

# **Color**

**Hex(B28285)**

# Conversions

## Conversions Part 1

<b>Format</b>	<b>Color</b>
Hex	B28285
RGB	178, 130, 133
RGB Percent	70%, 51%, 52%
CMY	0.3020, 0.4902, 0.4784
CMYK	0.00, 0.27, 0.25, 0.30
HSL	356°, 24%, 60%
HSV	356°, 27%, 70%
XYZ	30.5764, 27.1237, 25.8141
YIQ	144.6940, 27.6450, 11.1090

# Conversions

## Conversions Part 2

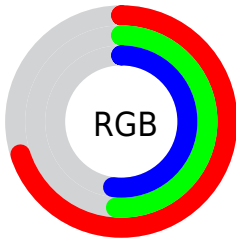
Format	Color
<a href="#">RYB</a>	<a href="#">178, 130, 133</a>
Decimal	<a href="#">11698821</a>
CIELab	<a href="#">59.09, 18.94, 5.68</a>
CIElCh	<a href="#">59, 19.774, 16.692</a>
Yxy	<a href="#">27.1237, 0.3661, 0.3248</a>
Android (android.graphics.Color)	<a href="#">4289888901 (0xFFB28285)</a>
YUV	<a href="#">144.6940, -5.7651, 29.2094</a>
Hunter-Lab	<a href="#">52.0804, 13.6565, 7.0686</a>

# Details

The Hex color **B28285** is a light color, and the websafe version is hex **CC9999**. A complement of this color would be **82B2AF**, and the grayscale version is **919191**.

A 20% lighter version of the original color is **EBB7BA**, and **7C5054** is the 20% darker color. If you saturate the color by 10%, you get **B27074**, and if you desaturate by 10%, it is **B29496**.

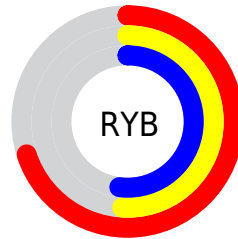
# Distribution



Red (70%)

Green (51%)

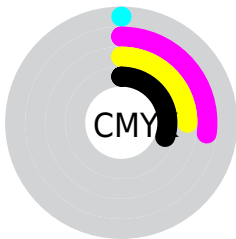
Blue (52%)



Red (70%)

Yellow (51%)

Blue (52%)

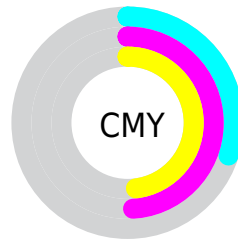


Cyan (0%)

Magenta (27%)

Yellow (25%)

Black (30%)



Cyan (30%)

Magenta (49%)

Yellow (48%)

# Brightness & Saturation Gradients

These gradients show how the Hex color B28285 changes by changing the brightness by 10 percent. The first figure shows a shift by +10% for each color and the second figure -10%.

Similar to the brightness gradients but the following saturation gradients show a change of the Hex color B28285 by changing the saturation by 10% instead.



 B28285

 B28285

FFFFFF

 97696C

 EBB7BA

 7C5054

 FFD3D6

 62393D

 FFEFF2

 4A2327

 320D12

 1C0001

 000000

 B28285

 B28285

 B27074

 B29496

 B25E64

 B2A6A6

 B24D53

 B2B7B7

 B23B42

 B2C9C8

 B22932

 B2DBD8

 B21721

 B2EDE9

 B20510

 B2FFFA

 B2000B

 B2FFFF

# Harmonies

## Analogous

The Analogous color harmony consists of three colors that are next to each other on the color wheel.



AC8397



B28285



AE8576

# Triad

The Triadic color harmony groups three colors that are evenly spaced from another and form a triangle on the color wheel.



B28285



7D9576



7092B0

# Complementary

The Complementary color scheme is a pair of colors which are on the opposite of each other on the color wheel.



B28285



82B2AF

# Split Complementary

Split-complementary colors differ from the complementary color scheme. The scheme consists of three colors, the original color and two neighbors of the complement color.



6096A7



B28285



6B9886

# Square

The Square scheme is like the rectangle color scheme, but the four colors are evenly spaced on the color wheel.



B28285



91906D



5E9898



878CAF

# Rectangle

The Rectangle color scheme consists of four colors that form a rectangle on the color wheel.



B28285



A7896F



5E9898



6994AE



# Sweetspot

The Sweet Spot groups the original color and five complimentary colors.



B28285



E8D5D7



AF82B2



756A6A



F5F5F5



757575



# Same Dimension

The Same Dimension uses a secret algorithm to generate beautiful new colors.



B28285



E89EA2



B29782



595051



99000A



1A0002



# Inverse Universe

The Inverse Universe completely reimagines the original color for something new.



B28285



E89EA2



829DB2



595051



99000A

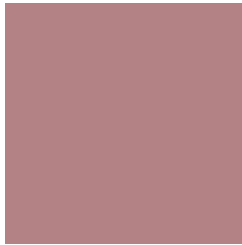


1A0002



# Previews

## White Background



This preview shows how the Hex color B28285 looks on a white background.

## Color Contrast Check

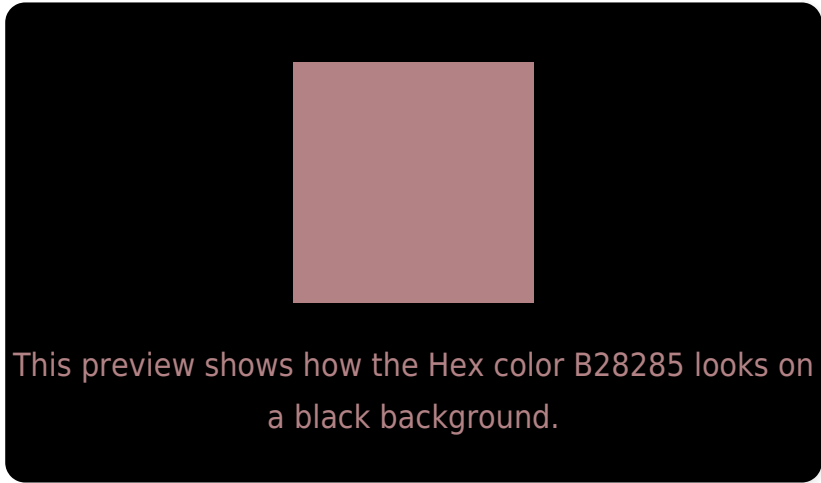
Large Text (above 18pt) WCAG AA ✓ Pass

Any Text WCAG AA ✗ Fail

Large Text (above 18pt) WCAG AAA ✗ Fail

Any Text WCAG AAA ✗ Fail

# Black Background



## Color Contrast Check

Large Text (above 18pt) WCAG AA ✓ Pass

Any Text WCAG AA ✓ Pass

Large Text (above 18pt) WCAG AAA ✓ Pass

Any Text WCAG AAA × Fail

If you want to check with other color combinations, try the [Color Contrast Checker](#).



## Hex B28285 Background



This preview shows how black text looks on a background with the Hex color B28285.



This preview shows how white text looks on a background with the Hex color B28285.

# Color Blindness Simulation

Color vision deficiency is a very complex topic, and I could not describe the different causes any better than Wikipedia does, so if you want to learn more, you should check out their [article about color blindness](#).

## Dichromacy



**Original Color**  
B28285

**Protanopia**  
928E8C

**Deuteranopia**  
A08A84



**Tritanopia**  
B3818B

# Trichromacy



**Original Color**  
B28285

**Protanomaly**  
9E8A89

**Deuteranomaly**  
A78784

**Tritanomaly**  
B38189

# Monochromacy



**Original Color**  
B28285

**Achromatopsia**  
919191

**Achromatomaly**  
9D8C8D

# CSS Examples

## Text

The CSS property to change the color of the text to Hex B28285 is called "color". The color property can be set on classes, ids or directly on the HTML element.

This example shows how text in the color #B28285 looks like.

```
.text, #text, p{  
    color:#B28285  
}
```

If you want to add a text shadow in that color use the text-shadow property, you can generate a text shadow directly with our [CSS Text Shadow Generator](#).

Here you see how black text with a 4 pixel #B28285 colored shadow looks like.

```
.shadow{ text-shadow: 4px 4px 2px #B28285
}
```

## Border

The CSS property to change the border of an element to Hex B28285 is called "border". The border property can be set on classes, ids or directly on the HTML element.

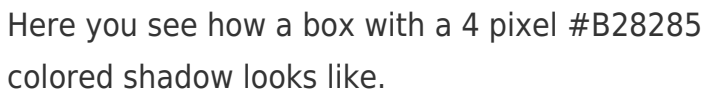
This example shows the color as border, it can be applied via the CSS property "border" or "border-color".

```
.border, #border, table{ border:4px solid
#B28285 }
```

If only the border color should be changed use the property `border-color`.

```
.border{ border-color:#B28285 }
```

If you want to add a box shadow in that color use:



Here you see how a box with a 4 pixel #B28285 colored shadow looks like.

```
.boxshadow{ -moz-box-shadow:4px 4px 4px  
4px #B28285; -webkit-box-shadow:4px 4px  
4px 4px #B28285; box-shadow:4px 4px 4px  
4px #B28285 }
```

# Background

The CSS property to change the background color of an element to Hex B28285 is called "background". The background property can be set on classes, ids or directly on the HTML element.

```
.background, #background, body{  
background:#B28285 }
```

If only the background color should be changed can be used:

```
.background{ background-color:#B28285 }
```

This example shows the color as background, it is applied via the CSS property "background".

To optimize and compress your CSS code, you can use our [online CSS compressor and optimizer](#) based on csstidy. If you want to create a linear or radial gradient as background or border, check our [CSS Gradient Generator](#).



Hey! You found this booklet interesting? Support Converting Colors with the new Membership Option!

The pro membership hides all ads, plus gives you double the colors in the color bucket, and more awesome pro features!

**[Learn more, Memberships starting at \\$2.50/m!](#)**

**Follow me  
on Twitter!**

@ConvertingColor