

# Converting Colors

Hex(B28A8A)

Have a look what the booklet for  
Hex(B28A8A) contains.

<b>Hex(B28A8A)</b> .....	3
<i><b>Conversions</b></i> .....	4
<i><b>Details</b></i> .....	6
<i><b>Harmonies</b></i> .....	11
<i><b>Previews</b></i> .....	23
<i><b>Color Blindness Simulation</b></i> .....	26
<i><b>CSS Examples</b></i> .....	29

# **Color**

**Hex(B28A8A)**

# Conversions

## Conversions Part 1

Format	Color
Hex	B28A8A
RGB	178, 138, 138
RGB Percent	70%, 54%, 54%
CMY	0.3020, 0.4588, 0.4588
CMYK	0.00, 0.22, 0.22, 0.30
HSL	0°, 21%, 62%
HSV	0°, 22%, 70%
XYZ	32.0360, 29.4769, 28.0459
YIQ	149.9600, 23.8400, 8.4800

# Conversions

## Conversions Part 2

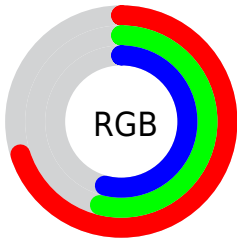
Format	Color
<a href="#">RYB</a>	<a href="#">178, 138, 138</a>
Decimal	<a href="#">11700874</a>
CIELab	<a href="#">61.20, 15.21, 5.85</a>
CIELCh	<a href="#">61, 16.293, 21.047</a>
Yxy	<a href="#">29.4769, 0.3577, 0.3291</a>
Android (android.graphics.Color)	<a href="#">4289890954</a> ( <a href="#">0xFFB28A8A</a> )
YUV	<a href="#">149.9600, -5.8963, 24.5911</a>
Hunter-Lab	<a href="#">54.2926, 10.3139, 7.3775</a>

# Details

The Hex color **B28A8A** is a light color, and the websafe version is hex **CC9999**. A complement of this color would be **8AB2B2**, and the grayscale version is **969696**.

A 20% lighter version of the original color is **EAC0BF**, and **7D5858** is the 20% darker color. If you saturate the color by 10%, you get **B27878**, and if you desaturate by 10%, it is **B29C9C**.

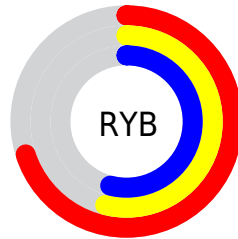
# Distribution



Red (70%)

Green (54%)

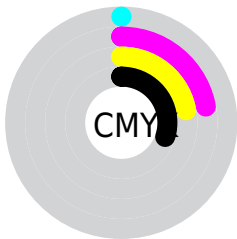
Blue (54%)



Red (70%)

Yellow (54%)

Blue (54%)

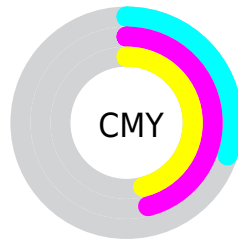


Cyan (0%)

Magenta (22%)

Yellow (22%)

Black (30%)



Cyan (30%)

Magenta (46%)

Yellow (46%)

# Brightness & Saturation Gradients

These gradients show how the Hex color B28A8A changes by changing the brightness by 10 percent. The first figure shows a shift by +10% for each color and the second figure -10%.

Similar to the brightness gradients but the following saturation gradients show a change of the Hex color B28A8A by changing the saturation by 10% instead.





B28A8A



B28A8A

FFFFFF



977071



EAC0BF



7D5858



FFDBDB



634041



FFF8F8



4A2A2B



331517



200000



000000



B28A8A



B28A8A



B27878



B29C9C

 B26666

 B2AEAE

 B25555

 B2BFBF

 B24343

 B2D1D1

 B23131

 B2E3E3

 B21F1F

 B2F5F5

 B20D0D

 B2FFFF

 B20000

# Harmonies

## Analogous

The Analogous color harmony consists of three colors that are next to each other on the color wheel.



AE8A99



B28A8A



AE8D7E

# Triad

The Triadic color harmony groups three colors that are evenly spaced from another and form a triangle on the color wheel.



B28A8A



849A81



7E96B0

# Complementary

The Complementary color scheme is a pair of colors which are on the opposite of each other on the color wheel.



B28A8A



8AB2B2

# Split Complementary

Split-complementary colors differ from the complementary color scheme. The scheme consists of three colors, the original color and two neighbors of the complement color.



709AAA



B28A8A



759C8F

# Square

The Square scheme is like the rectangle color scheme, but the four colors are evenly spaced on the color wheel.



B28A8A



949679



6D9C9D



9192AE

# Rectangle

The Rectangle color scheme consists of four colors that form a rectangle on the color wheel.



B28A8A



A79079



6D9C9D



7998AF



# Sweetspot

The Sweet Spot groups the original color and five complimentary colors.



B28A8A



E8D8D8



B28AB2



756C6C



F5F5F5



757575



# Same Dimension

The Same Dimension uses a secret algorithm to generate beautiful new colors.



B28A8A



E8A9A9



B29E8A



595050



990000



1A0000



# Inverse Universe

The Inverse Universe completely reimagines the original color for something new.



8AB2B2



A9E8E8



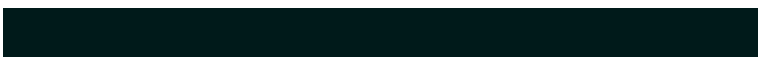
8A9EB2



505959



009999

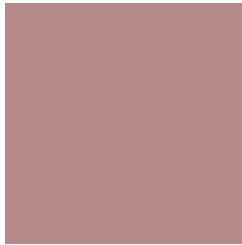


001A1A



# Previews

## White Background



This preview shows how the Hex color B28A8A looks on a white background.

## Color Contrast Check

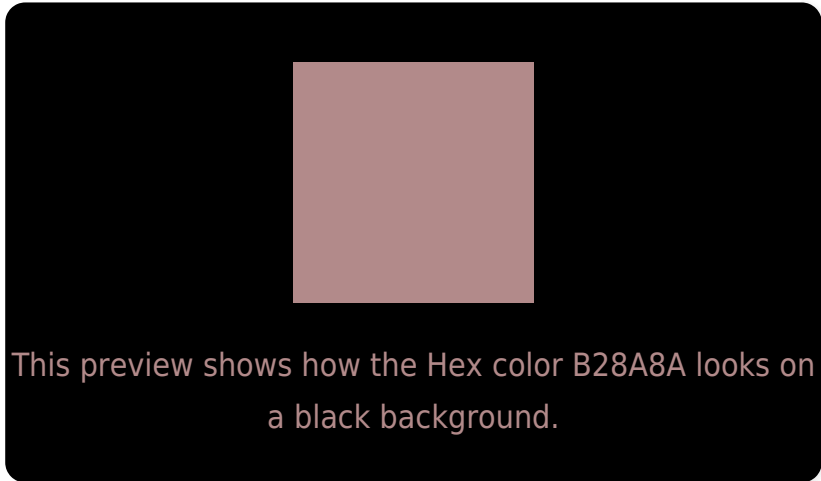
Large Text (above 18pt) WCAG AA ✓ Pass

Any Text WCAG AA ✗ Fail

Large Text (above 18pt) WCAG AAA ✗ Fail

Any Text WCAG AAA ✗ Fail

# Black Background



## Color Contrast Check

Large Text (above 18pt) WCAG AA ✓ Pass

Any Text WCAG AA ✓ Pass

Large Text (above 18pt) WCAG AAA ✓ Pass

Any Text WCAG AAA × Fail

If you want to check with other color combinations, try the [Color Contrast Checker](#).



## Hex B28A8A Background



This preview shows how black text looks on a background with the Hex color B28A8A.



This preview shows how white text looks on a background with the Hex color B28A8A.

# Color Blindness Simulation

Color vision deficiency is a very complex topic, and I could not describe the different causes any better than Wikipedia does, so if you want to learn more, you should check out their [article about color blindness](#).

## Dichromacy



**Original Color**  
B28A8A

**Protanopia**  
98938F

**Deuteranopia**  
A68F89



**Tritanopia**  
B38993

# Trichromacy



**Original Color**

B28A8A

**Protanomaly**

A1908D

**Deuteranomaly**

AA8D89

**Tritanomaly**

B38990

# Monochromacy



**Original Color**

B28A8A

**Achromatopsia**

969696

**Achromatomaly**

A09292

# CSS Examples

## Text

The CSS property to change the color of the text to Hex B28A8A is called "color". The color property can be set on classes, ids or directly on the HTML element.

This example shows how text in the color #B28A8A looks like.

```
.text, #text, p{  
    color:#B28A8A  
}
```

If you want to add a text shadow in that color use the text-shadow property, you can generate a text shadow directly with our [CSS Text Shadow Generator](#).

Here you see how black text with a 4 pixel #B28A8A colored shadow looks like.

```
.shadow{ text-shadow: 4px 4px 2px #B28A8A
}
```

## Border

The CSS property to change the border of an element to Hex B28A8A is called "border". The border property can be set on classes, ids or directly on the HTML element.

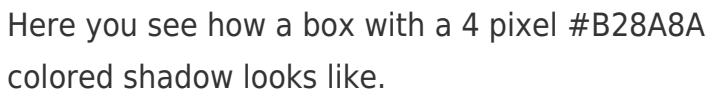
This example shows the color as border, it can be applied via the CSS property "border" or "border-color".

```
.border, #border, table{ border:4px solid
#B28A8A }
```

If only the border color should be changed use the property `border-color`.

```
.border{ border-color:#B28A8A }
```

If you want to add a box shadow in that color use:



Here you see how a box with a 4 pixel #B28A8A colored shadow looks like.

```
.boxshadow{ -moz-box-shadow:4px 4px 4px  
4px #B28A8A; -webkit-box-shadow:4px 4px  
4px 4px #B28A8A; box-shadow:4px 4px 4px  
4px #B28A8A }
```

# Background

The CSS property to change the background color of an element to Hex B28A8A is called "background". The background property can be set on classes, ids or directly on the HTML element.

```
.background, #background, body{  
background:#B28A8A }
```

If only the background color should be changed can be used:

```
.background{ background-color:#B28A8A }
```

This example shows the color as background, it is applied via the CSS property "background".

To optimize and compress your CSS code, you can use our [online CSS compressor and optimizer](#) based on csstidy. If you want to create a linear or radial gradient as background or border, check our [CSS Gradient Generator](#).



Hey! You found this booklet interesting? Support Converting Colors with the new Membership Option!

The pro membership hides all ads, plus gives you double the colors in the color bucket, and more awesome pro features!

**[Learn more, Memberships starting at \\$2.50/m!](#)**

**Follow me  
on Twitter!**

@ConvertingColor