

Converting Colors

Hex(B28B91)

Have a look what the booklet for
Hex(B28B91) contains.

Hex(B28B91)	3
<i>Conversions</i>	4
<i>Details</i>	6
<i>Harmonies</i>	11
<i>Previews</i>	23
<i>Color Blindness Simulation</i>	26
<i>CSS Examples</i>	29

Color

Hex(B28B91)

Conversions

Conversions Part 1

Format	Color
Hex	B28B91
RGB	178, 139, 145
RGB Percent	70%, 55%, 57%
CMY	0.3020, 0.4549, 0.4314
CMYK	0.00, 0.22, 0.19, 0.30
HSL	351°, 20%, 62%
HSV	351°, 22%, 70%
XYZ	32.7036, 29.9745, 30.8501
YIQ	151.3450, 21.3180, 10.1340

Conversions

Conversions Part 2

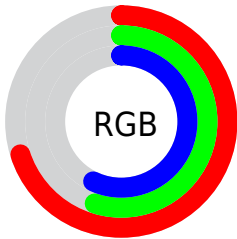
Format	Color
R_{YB}	178, 139, 145
Decimal	11701137
CIE _{Lab}	61.63, 15.74, 2.49
CIE _{LCh}	62, 15.940, 8.984
Yxy	29.9745, 0.3497, 0.3205
Android (android.graphics.Color)	4289891217 (0xFFB28B91)
YUV	151.3450, -3.1281, 23.3764
Hunter-Lab	54.7490, 10.8137, 4.9155

Details

The Hex color **B28B91** is a light color, and the websafe version is hex **CC9999**. A complement of this color would be **8BB2AC**, and the grayscale version is **979797**.

A 20% lighter version of the original color is **EAC1C7**, and **7D595F** is the 20% darker color. If you saturate the color by 10%, you get **B27982**, and if you desaturate by 10%, it is **B29DA0**.

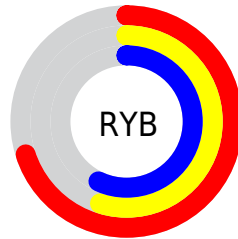
Distribution



Red (70%)

Green (55%)

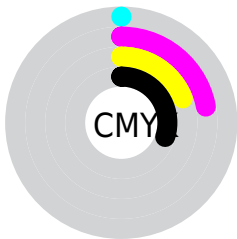
Blue (57%)



Red (70%)

Yellow (55%)

Blue (57%)

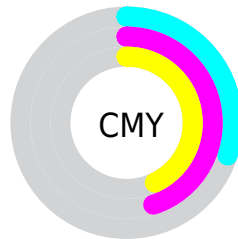


Cyan (0%)

Magenta (22%)

Yellow (19%)

Black (30%)



Cyan (30%)

Magenta (45%)

Yellow (43%)

Brightness & Saturation Gradients

These gradients show how the Hex color B28B91 changes by changing the brightness by 10 percent. The first figure shows a shift by +10% for each color and the second figure -10%.

Similar to the brightness gradients but the following saturation gradients show a change of the Hex color B28B91 by changing the saturation by 10% instead.



B28B91



B28B91

FFFFFF



977177



EAC1C7



7D595F



FFDDE3



634147



FFF9FF



4B2B31



33161C



210001



000000



B28B91



B28B91



B27982



B29DA0

 B26773

 B2AFAF

 B25664

 B2C0BE

 B24455

 B2D2CD

 B23246

 B2E4DC

 B22037

 B2F6EB

 B20E28

 B2FFFA

 B2001B

 B2FFFF

Harmonies

Analogous

The Analogous color harmony consists of three colors that are next to each other on the color wheel.



AB8C9F



B28B91



B18D84

Triad

The Triadic color harmony groups three colors that are evenly spaced from another and form a triangle on the color wheel.



B28B91



8C997F



7999AF

Complementary

The Complementary color scheme is a pair of colors which are on the opposite of each other on the color wheel.



B28B91



8BB2AC

Split Complementary

Split-complementary colors differ from the complementary color scheme. The scheme consists of three colors, the original color and two neighbors of the complement color.



709CA6



B28B91



7C9C8A

Square

The Square scheme is like the rectangle color scheme, but the four colors are evenly spaced on the color wheel.



B28B91



9C9579



719D99



8A95B0

Rectangle

The Rectangle color scheme consists of four colors that form a rectangle on the color wheel.



B28B91



AC8F7D



719D99



759AAD

Sweetspot

The Sweet Spot groups the original color and five complimentary colors.



B28B91



E8D8DA



AC8BB2



756C6D



F5F5F5



757575

Same Dimension

The Same Dimension uses a secret algorithm to generate beautiful new colors.



B28B91



E8ACB5



B2988B



595052



990018



1A0004

Inverse Universe

The Inverse Universe completely reimagines the original color for something new.



B28B91



E8ACB5



8BA5B2



595052



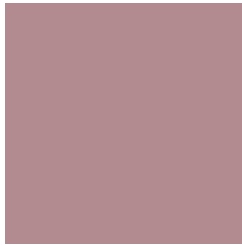
990018



1A0004

Previews

White Background



This preview shows how the Hex color B28B91 looks on a white background.

Color Contrast Check

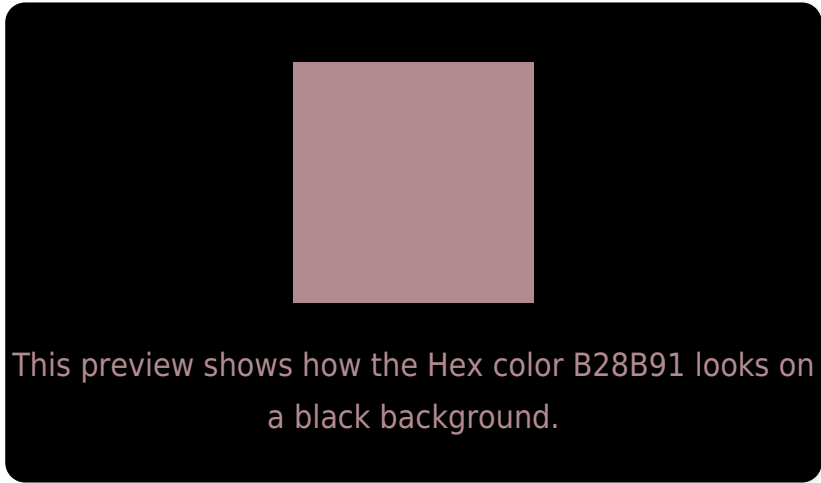
Large Text (above 18pt) WCAG AA ✓ Pass

Any Text WCAG AA ✗ Fail

Large Text (above 18pt) WCAG AAA ✗ Fail

Any Text WCAG AAA ✗ Fail

Black Background



Color Contrast Check

Large Text (above 18pt) WCAG AA ✓ Pass

Any Text WCAG AA ✓ Pass

Large Text (above 18pt) WCAG AAA ✓ Pass

Any Text WCAG AAA ✓ Pass

If you want to check with other color combinations, try the [Color Contrast Checker](#).

Hex B28B91 Background



This preview shows how black text looks on a background with the Hex color B28B91.

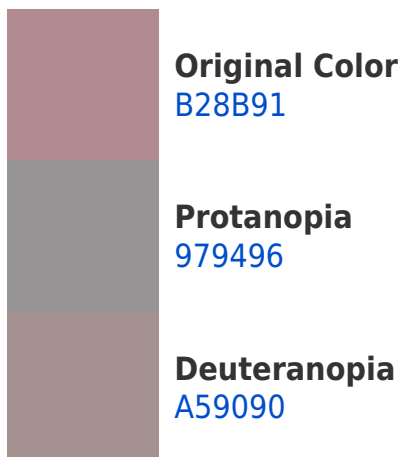



This preview shows how white text looks on a background with the Hex color B28B91.

Color Blindness Simulation

Color vision deficiency is a very complex topic, and I could not describe the different causes any better than Wikipedia does, so if you want to learn more, you should check out their [article about color blindness](#).

Dichromacy





Tritanopia
B28A95

Trichromacy



Original Color
B28B91

Protanomaly
A19194

Deuteranomaly
AA8E90

Tritanomaly
B28A94

Monochromacy



Original Color
B28B91

Achromatopsia
979797

Achromatomaly
A19395

CSS Examples

Text

The CSS property to change the color of the text to Hex B28B91 is called "color". The color property can be set on classes, ids or directly on the HTML element.

This example shows how text in the color #B28B91 looks like.

```
.text, #text, p{  
    color:#B28B91  
}
```

If you want to add a text shadow in that color use the text-shadow property, you can generate a text shadow directly with our [CSS Text Shadow Generator](#).

Here you see how black text with a 4 pixel #B28B91 colored shadow looks like.

```
.shadow{ text-shadow: 4px 4px 2px #B28B91
}
```

Border

The CSS property to change the border of an element to Hex B28B91 is called "border". The border property can be set on classes, ids or directly on the HTML element.

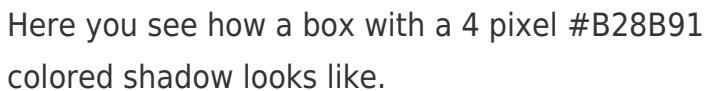
This example shows the color as border, it can be applied via the CSS property "border" or "border-color".

```
.border, #border, table{ border:4px solid
#B28B91 }
```

If only the border color should be changed use the property `border-color`.

```
.border{ border-color:#B28B91 }
```

If you want to add a box shadow in that color use:



Here you see how a box with a 4 pixel #B28B91 colored shadow looks like.

```
.boxshadow{ -moz-box-shadow:4px 4px 4px  
4px #B28B91; -webkit-box-shadow:4px 4px  
4px 4px #B28B91; box-shadow:4px 4px 4px  
4px #B28B91 }
```

Background

The CSS property to change the background color of an element to Hex B28B91 is called "background". The background property can be set on classes, ids or directly on the HTML element.

```
.background, #background, body{  
background:#B28B91 }
```

If only the background color should be changed can be used:

```
.background{ background-color:#B28B91 }
```

This example shows the color as background, it is applied via the CSS property "background".

To optimize and compress your CSS code, you can use our [online CSS compressor and optimizer](#) based on csstidy. If you want to create a linear or radial gradient as background or border, check our [CSS Gradient Generator](#).

Hey! You found this booklet interesting? Support Converting Colors with the new Membership Option!

The pro membership hides all ads, plus gives you double the colors in the color bucket, and more awesome pro features!

[Learn more, Memberships starting at \\$2.50/m!](#)

**Follow me
on Twitter!**

@ConvertingColor