

# Converting Colors

Hex(B28D55)

Have a look what the booklet for  
Hex(B28D55) contains.

<b>Hex(B28D55)</b> .....	3
<b><i>Conversions</i></b> .....	4
<b><i>Details</i></b> .....	6
<b><i>Harmonies</i></b> .....	11
<b><i>Previews</i></b> .....	23
<b><i>Color Blindness Simulation</i></b> .....	26
<b><i>CSS Examples</i></b> .....	29

**Color**

**Hex(B28D55)**

# Conversions

## Conversions Part 1

<b>Format</b>	<b>Color</b>
Hex	B28D55
RGB	178, 141, 85
RGB Percent	70%, 55%, 33%
CMY	0.3020, 0.4471, 0.6667
CMYK	0.00, 0.21, 0.52, 0.30
HSL	36°, 38%, 52%
HSV	36°, 52%, 70%
XYZ	29.5247, 29.1706, 12.6687
YIQ	145.6790, 40.0280, -9.5720

# Conversions

## Conversions Part 2

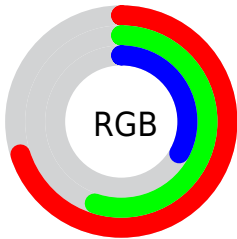
Format	Color
<a href="#">RYB</a>	<a href="#">146, 178, 85</a>
Decimal	<a href="#">11701589</a>
CIELab	<a href="#">60.93, 7.02, 35.00</a>
CIElCh	<a href="#">61, 35.700, 78.657</a>
Yxy	<a href="#">29.1706, 0.4137, 0.4088</a>
Android (android.graphics.Color)	<a href="#">4289891669</a> ( <a href="#">0xFFB28D55</a> )
YUV	<a href="#">145.6790, -29.9147, 28.3455</a>
Hunter-Lab	<a href="#">54.0098, 3.0605, 23.8996</a>

# Details

The Hex color **B28D55** is a dark color, and the websafe version is hex **CC9966**. A complement of this color would be **557AB2**, and the grayscale version is **929292**.

A 20% lighter version of the original color is **ECC388**, and **7B5B25** is the 20% darker color. If you saturate the color by 10%, you get **B28643**, and if you desaturate by 10%, it is **B29467**.

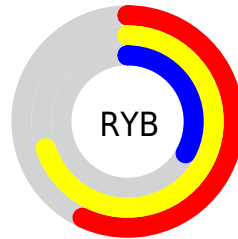
# Distribution



Red (70%)

Green (55%)

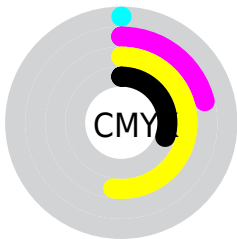
Blue (33%)



Red (57%)

Yellow (70%)

Blue (33%)

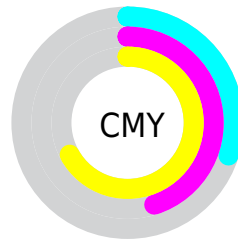


Cyan (0%)

Magenta (21%)

Yellow (52%)

Black (30%)



Cyan (30%)

Magenta (45%)

Yellow (67%)

# Brightness & Saturation Gradients

These gradients show how the Hex color B28D55 changes by changing the brightness by 10 percent. The first figure shows a shift by +10% for each color and the second figure -10%.

Similar to the brightness gradients but the following saturation gradients show a change of the Hex color B28D55 by changing the saturation by 10% instead.



 B28D55

 B28D55

FFFFFF

 96743D

 ECC388

 7B5B25

 FFDEA2

 60440E

 FFFBBE

 472D00

 FFFFDA

 2D1900

 FFFFF6

 140000

 000000

 B28D55

 B28D55

 B28643

 B29467

 B27F31

 B29B79

 B27820

 B2A28A

 B2710E

 B2A99C

 B26B00

 B2B0AE

 B2B7C0

 B2BFD2

 B2C6E3

 B2CDF5

# Harmonies

## Analogous

The Analogous color harmony consists of three colors that are next to each other on the color wheel.



C88265



B28D55



949756

# Triad

The Triadic color harmony groups three colors that are evenly spaced from another and form a triangle on the color wheel.



B28D55



00A4A6



AF84BD

# Complementary

The Complementary color scheme is a pair of colors which are on the opposite of each other on the color wheel.



B28D55



557AB2

# Split Complementary

Split-complementary colors differ from the complementary color scheme. The scheme consists of three colors, the original color and two neighbors of the complement color.



858FCF



B28D55



00A1C1

# Square

The Square scheme is like the rectangle color scheme, but the four colors are evenly spaced on the color wheel.



B28D55



45A386



4D9AD0



C87BA0

# Rectangle

The Rectangle color scheme consists of four colors that form a rectangle on the color wheel.



B28D55



7C9D61



4D9AD0



A287C4



# Sweetspot

The Sweet Spot groups the original color and five complimentary colors.



B28D55



E8D9C3



B2557A



756C5F



F5F5F5



757575



# Same Dimension

The Same Dimension uses a secret algorithm to generate beautiful new colors.



B28D55



E8AE56



A9B255



595650



995C00



1A0F00



# Inverse Universe

The Inverse Universe completely reimagines the original color for something new.



557AB2



5690E8



5E55B2



505459



003D99

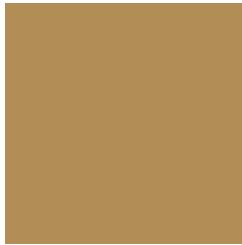


000A1A



# Previews

## White Background



This preview shows how the Hex color B28D55 looks on a white background.

## Color Contrast Check

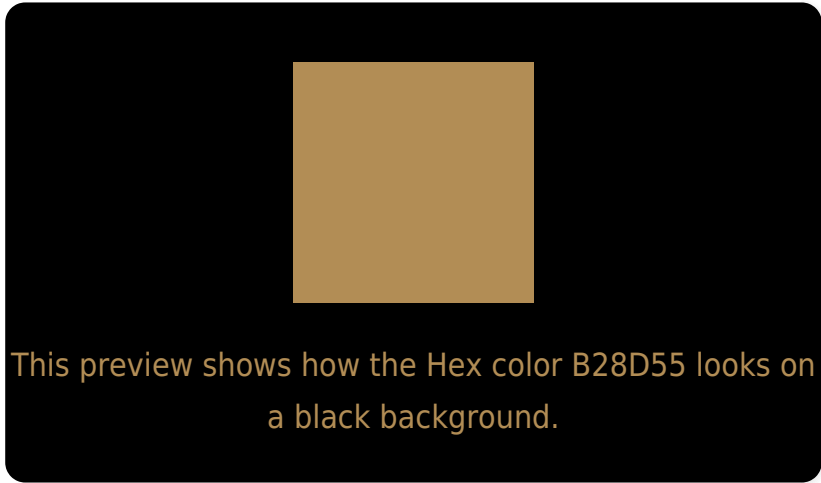
Large Text (above 18pt) WCAG AA ✓ Pass

Any Text WCAG AA ✗ Fail

Large Text (above 18pt) WCAG AAA ✗ Fail

Any Text WCAG AAA ✗ Fail

# Black Background



## Color Contrast Check

Large Text (above 18pt) WCAG AA ✓ Pass

Any Text WCAG AA ✓ Pass

Large Text (above 18pt) WCAG AAA ✓ Pass

Any Text WCAG AAA × Fail

If you want to check with other color combinations, try the [Color Contrast Checker](#).



## Hex B28D55 Background



This preview shows how black text looks on a background with the Hex color B28D55.



This preview shows how white text looks on a background with the Hex color B28D55.

# Color Blindness Simulation

Color vision deficiency is a very complex topic, and I could not describe the different causes any better than Wikipedia does, so if you want to learn more, you should check out their [article about color blindness](#).

## Dichromacy



**Original Color**  
B28D55

**Protanopia**  
A19357

**Deuteranopia**  
B38C55

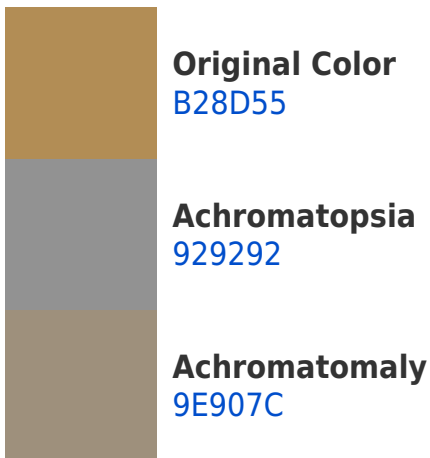


**Tritanopia**  
B78690

# Trichromacy



# Monochromacy



# CSS Examples

## Text

The CSS property to change the color of the text to Hex B28D55 is called "color". The color property can be set on classes, ids or directly on the HTML element.

This example shows how text in the color #B28D55 looks like.

```
.text, #text, p{  
    color:#B28D55  
}
```

If you want to add a text shadow in that color use the text-shadow property, you can generate a text shadow directly with our [CSS Text Shadow Generator](#).

Here you see how black text with a 4 pixel #B28D55 colored shadow looks like.

```
.shadow{ text-shadow: 4px 4px 2px #B28D55
}
```

## Border

The CSS property to change the border of an element to Hex B28D55 is called "border". The border property can be set on classes, ids or directly on the HTML element.

This example shows the color as border, it can be applied via the CSS property "border" or "border-color".

```
.border, #border, table{ border:4px solid
#B28D55 }
```

If only the border color should be changed use the property `border-color`.

```
.border{ border-color:#B28D55 }
```

If you want to add a box shadow in that color use:

Here you see how a box with a 4 pixel #B28D55 colored shadow looks like.

```
.boxshadow{ -moz-box-shadow:4px 4px 4px  
4px #B28D55; -webkit-box-shadow:4px 4px  
4px 4px #B28D55; box-shadow:4px 4px 4px  
4px #B28D55 }
```

# Background

The CSS property to change the background color of an element to Hex B28D55 is called "background". The background property can be set on classes, ids or directly on the HTML element.

```
.background, #background, body{  
background:#B28D55 }
```

If only the background color should be changed can be used:

```
.background{ background-color:#B28D55 }
```

This example shows the color as background, it is applied via the CSS property "background".

To optimize and compress your CSS code, you can use our [online CSS compressor and optimizer](#) based on csstidy. If you want to create a linear or radial gradient as background or border, check our [CSS Gradient Generator](#).



Hey! You found this booklet interesting? Support Converting Colors with the new Membership Option!

The pro membership hides all ads, plus gives you double the colors in the color bucket, and more awesome pro features!

**[Learn more, Memberships starting at \\$2.50/m!](#)**

**Follow me  
on Twitter!**

@ConvertingColor