

Converting Colors

Hex(B29176)

Have a look what the booklet for
Hex(B29176) contains.

Hex(B29176)	3
<i>Conversions</i>	4
<i>Details</i>	6
<i>Harmonies</i>	11
<i>Previews</i>	23
<i>Color Blindness Simulation</i>	26
<i>CSS Examples</i>	29

Color

Hex(B29176)

Conversions

Conversions Part 1

Format	Color
Hex	B29176
RGB	178, 145, 118
RGB Percent	70%, 57%, 46%
CMY	0.3020, 0.4314, 0.5373
CMYK	0.00, 0.19, 0.34, 0.30
HSL	27°, 28%, 58%
HSV	27°, 34%, 70%
XYZ	31.7555, 31.0238, 21.4540
YIQ	151.7890, 28.3350, -1.4010

Conversions

Conversions Part 2

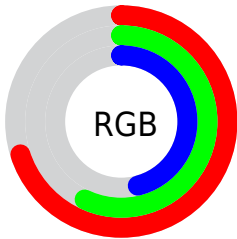
Format	Color
RYB	178, 167, 118
Decimal	11702646
CIELab	62.53, 8.47, 19.01
CIElCh	63, 20.812, 65.997
Yxy	31.0238, 0.3770, 0.3683
Android (android.graphics.Color)	4289892726 (0xFFB29176)
YUV	151.7890, -16.6580, 22.9870
Hunter-Lab	55.6990, 4.2945, 16.1521

Details

The Hex color **B29176** is a light color, and the websafe version is hex **CC9966**. A complement of this color would be **7697B2**, and the grayscale version is **989898**.

A 20% lighter version of the original color is **EBC7AA**, and **7C5F45** is the 20% darker color. If you saturate the color by 10%, you get **B28764**, and if you desaturate by 10%, it is **B29B88**.

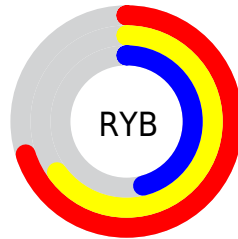
Distribution



Red (70%)

Green (57%)

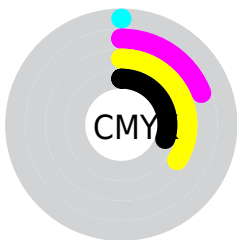
Blue (46%)



Red (70%)

Yellow (65%)

Blue (46%)

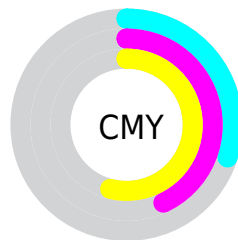


Cyan (0%)

Magenta (19%)

Yellow (34%)

Black (30%)



Cyan (30%)

Magenta (43%)

Yellow (54%)

Brightness & Saturation Gradients

These gradients show how the Hex color B29176 changes by changing the brightness by 10 percent. The first figure shows a shift by +10% for each color and the second figure -10%.

Similar to the brightness gradients but the following saturation gradients show a change of the Hex color B29176 by changing the saturation by 10% instead.



B29176



B29176

FFFFFF



97775D



EBC7AA



7C5F45



FFE3C6



62472F



FFFFE2



49311A

FFFFFFE



321B00



1B0200



000000



B29176



B29176



B28764



B29B88

 B27D52

 B2A59A

 B27441

 B2AEAB

 B26A2F

 B2B8BD

 B2601D

 B2C2CF

 B2560B

 B2CCE1

 B25000

 B2D6F3

 B2DFFF

 B2E9FF

Harmonies

Analogous

The Analogous color harmony consists of three colors that are next to each other on the color wheel.



BC8C82



B29176



A19773

Triad

The Triadic color harmony groups three colors that are evenly spaced from another and form a triangle on the color wheel.



B29176



68A29A



9F91B5

Complementary

The Complementary color scheme is a pair of colors which are on the opposite of each other on the color wheel.



B29176



7697B2

Split Complementary

Split-complementary colors differ from the complementary color scheme. The scheme consists of three colors, the original color and two neighbors of the complement color.



8698BC



B29176



63A1AC

Square

The Square scheme is like the rectangle color scheme, but the four colors are evenly spaced on the color wheel.



B29176



78A088



6F9DB8



B28CA7

Rectangle

The Rectangle color scheme consists of four colors that form a rectangle on the color wheel.



B29176



949B76



6F9DB8



9793B8

Sweetspot

The Sweet Spot groups the original color and five complimentary colors.



B29176



E8DBD1



B27697



756E67



F5F5F5



757575

Same Dimension

The Same Dimension uses a secret algorithm to generate beautiful new colors.



B29176



E8B58B



B2AF76



595450



994500



1A0B00

Inverse Universe

The Inverse Universe completely reimagines the original color for something new.



7697B2



8BBEE8



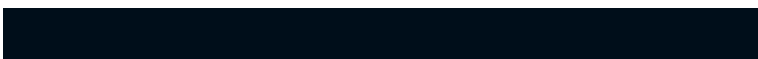
7679B2



505559



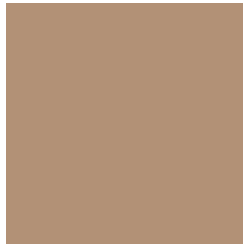
005499



000E1A

Previews

White Background



This preview shows how the Hex color B29176 looks on a white background.

Color Contrast Check

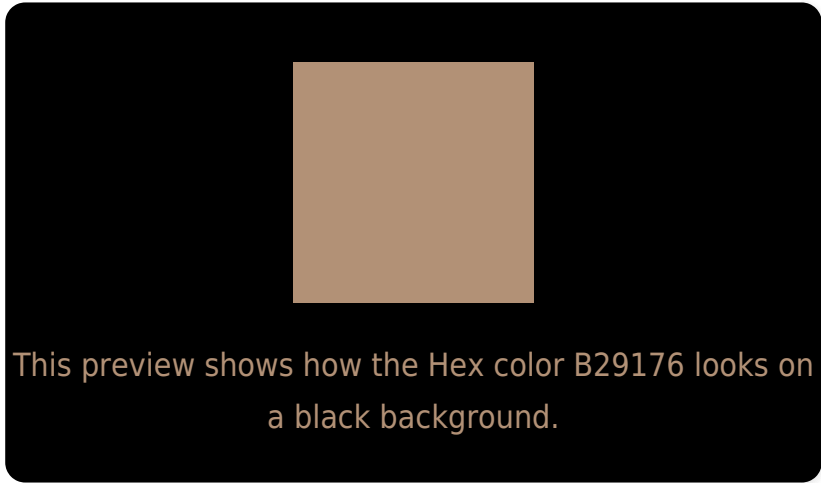
Large Text (above 18pt) WCAG AA × Fail

Any Text WCAG AA × Fail

Large Text (above 18pt) WCAG AAA × Fail

Any Text WCAG AAA × Fail

Black Background



Color Contrast Check

Large Text (above 18pt) WCAG AA ✓ Pass

Any Text WCAG AA ✓ Pass

Large Text (above 18pt) WCAG AAA ✓ Pass

Any Text WCAG AAA ✓ Pass

If you want to check with other color combinations, try the [Color Contrast Checker](#).

Hex B29176 Background



This preview shows how black text looks on a background with the Hex color B29176.



This preview shows how white text looks on a background with the Hex color B29176.

Color Blindness Simulation

Color vision deficiency is a very complex topic, and I could not describe the different causes any better than Wikipedia does, so if you want to learn more, you should check out their [article about color blindness](#).

Dichromacy



Original Color
B29176

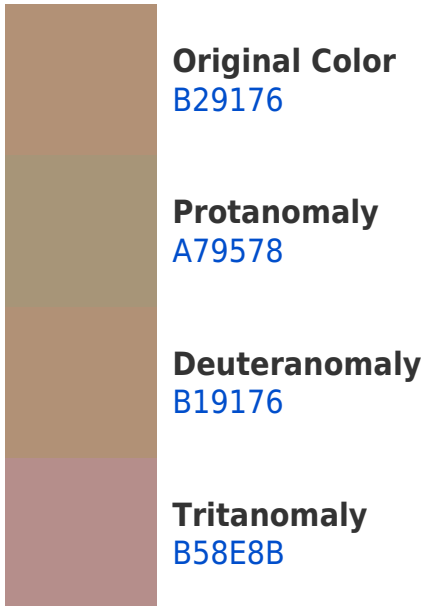
Protanopia
A19779

Deuteranopia
B19176

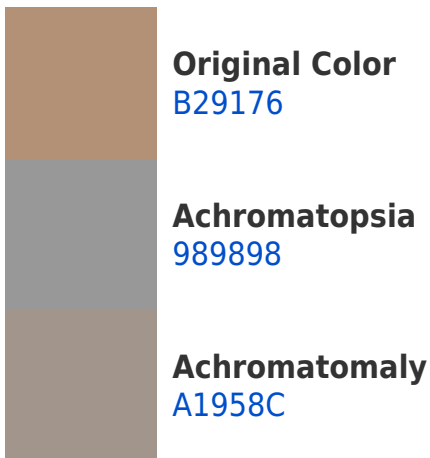


Tritanopia
B68C97

Trichromacy



Monochromacy



CSS Examples

Text

The CSS property to change the color of the text to Hex B29176 is called "color". The color property can be set on classes, ids or directly on the HTML element.

This example shows how text in the color #B29176 looks like.

```
.text, #text, p{  
    color:#B29176  
}
```

If you want to add a text shadow in that color use the text-shadow property, you can generate a text shadow directly with our [CSS Text Shadow Generator](#).

Here you see how black text with a 4 pixel #B29176 colored shadow looks like.

```
.shadow{ text-shadow: 4px 4px 2px #B29176
}
```

Border

The CSS property to change the border of an element to Hex B29176 is called "border". The border property can be set on classes, ids or directly on the HTML element.

This example shows the color as border, it can be applied via the CSS property "border" or "border-color".

```
.border, #border, table{ border:4px solid
#B29176 }
```

If only the border color should be changed use the property border-color.

```
.border{ border-color:#B29176 }
```

If you want to add a box shadow in that color use:

Here you see how a box with a 4 pixel #B29176 colored shadow looks like.

```
.boxshadow{ -moz-box-shadow:4px 4px 4px  
4px #B29176; -webkit-box-shadow:4px 4px  
4px 4px #B29176; box-shadow:4px 4px 4px  
4px #B29176 }
```

Background

The CSS property to change the background color of an element to Hex B29176 is called "background". The background property can be set on classes, ids or directly on the HTML element.

```
.background, #background, body{  
background:#B29176 }
```

If only the background color should be changed can be used:

```
.background{ background-color:#B29176 }
```

This example shows the color as background, it is applied via the CSS property "background".

To optimize and compress your CSS code, you can use our [online CSS compressor and optimizer](#) based on csstidy. If you want to create a linear or radial gradient as background or border, check our [CSS Gradient Generator](#).

Hey! You found this booklet interesting? Support Converting Colors with the new Membership Option!

The pro membership hides all ads, plus gives you double the colors in the color bucket, and more awesome pro features!

[Learn more, Memberships starting at \\$2.50/m!](#)

**Follow me
on Twitter!**

@ConvertingColor