

# Converting Colors

Hex(B2918E)

Have a look what the booklet for  
Hex(B2918E) contains.

<b>Hex(B2918E)</b> .....	3
<i><b>Conversions</b></i> .....	4
<i><b>Details</b></i> .....	6
<i><b>Harmonies</b></i> .....	11
<i><b>Previews</b></i> .....	23
<i><b>Color Blindness Simulation</b></i> .....	26
<i><b>CSS Examples</b></i> .....	29

# **Color**

**Hex(B2918E)**

# Conversions

## Conversions Part 1

Format	Color
Hex	B2918E
RGB	178, 145, 142
RGB Percent	70%, 57%, 56%
CMY	0.3020, 0.4314, 0.4431
CMYK	0.00, 0.19, 0.20, 0.30
HSL	5°, 19%, 63%
HSV	5°, 20%, 70%
XYZ	33.3680, 31.6688, 29.9452
YIQ	154.5250, 20.6310, 6.0630

# Conversions

## Conversions Part 2

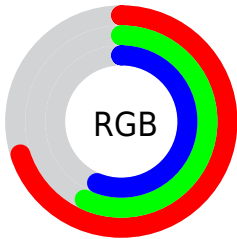
<b>Format</b>	<b>Color</b>
<a href="#">RYB</a>	<a href="#">178, 145, 142</a>
Decimal	<a href="#">11702670</a>
CIELab	<a href="#">63.07, 11.91, 6.26</a>
CIELCh	<a href="#">63, 13.458, 27.730</a>
Yxy	<a href="#">31.6688, 0.3513, 0.3334</a>
Android (android.graphics.Color)	<a href="#">4289892750 (0xFFB2918E)</a>
YUV	<a href="#">154.5250, -6.1748, 20.5876</a>
Hunter-Lab	<a href="#">56.2750, 7.3594, 7.8430</a>

# Details

The Hex color **B2918E** is a light color, and the websafe version is hex **CC9999**. A complement of this color would be **8EAFB2**, and the grayscale version is **9B9B9B**.

A 20% lighter version of the original color is **EAC7C4**, and **7D5E5C** is the 20% darker color. If you saturate the color by 10%, you get **B2817C**, and if you desaturate by 10%, it is **B2A1A0**.

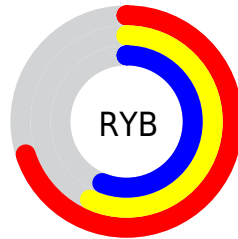
# Distribution



Red (70%)

Green (57%)

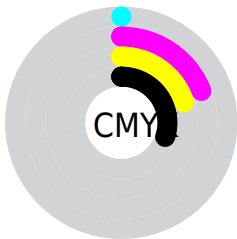
Blue (56%)



Red (70%)

Yellow (57%)

Blue (56%)

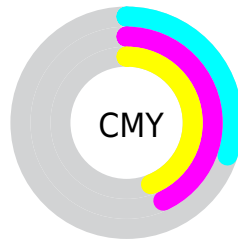


Cyan (0%)

Magenta (19%)

Yellow (20%)

Black (30%)



Cyan (30%)

Magenta (43%)

Yellow (44%)

# Brightness & Saturation Gradients

These gradients show how the Hex color B2918E changes by changing the brightness by 10 percent. The first figure shows a shift by +10% for each color and the second figure -10%.

Similar to the brightness gradients but the following saturation gradients show a change of the Hex color B2918E by changing the saturation by 10% instead.





B2918E



B2918E

FFFFFF



977774



EAC7C4



7D5E5C



FFE3E0



634744

FFFFFFC



4B302E



341B19



200100



000000



B2918E



B2918E



B2817C



B2A1A0

 B2706A

 B2B2B2

 B26059

 B2C2C3

 B25047

 B2D2D5

 B23F35

 B2E3E7

 B22F23

 B2F3F9

 B21F11

 B2FFFF

 B20F00

# Harmonies

## Analogous

The Analogous color harmony consists of three colors that are next to each other on the color wheel.



B0909A



B2918E



AD9485

# Triad

The Triadic color harmony groups three colors that are evenly spaced from another and form a triangle on the color wheel.



B2918E



889E8C



8A9AB0

# Complementary

The Complementary color scheme is a pair of colors which are on the opposite of each other on the color wheel.



B2918E



8EAFB2

# Split Complementary

Split-complementary colors differ from the complementary color scheme. The scheme consists of three colors, the original color and two neighbors of the complement color.



7E9DAC



B2918E



7EA097

# Square

The Square scheme is like the rectangle color scheme, but the four colors are evenly spaced on the color wheel.



B2918E



969B83



7A9FA3



9A96AE

# Rectangle

The Rectangle color scheme consists of four colors that form a rectangle on the color wheel.



B2918E



A79682



7A9FA3



869BB0



# Sweetspot

The Sweet Spot groups the original color and five complimentary colors.



B2918E



E8DBDA



B28EAF



756E6D



F5F5F5



757575



# Same Dimension

The Same Dimension uses a secret algorithm to generate beautiful new colors.



B2918E



E8B5B0



B2A28E



595150



990D00



1A0200



# Inverse Universe

The Inverse Universe completely reimagines the original color for something new.



8EAFB2



B0E3E8



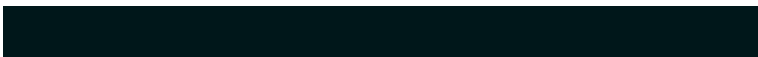
8E9EB2



505959



008C99

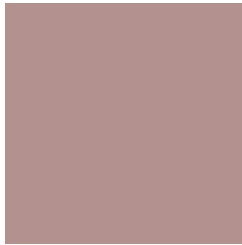


00171A



# Previews

## White Background



This preview shows how the Hex color B2918E looks on a white background.

## Color Contrast Check

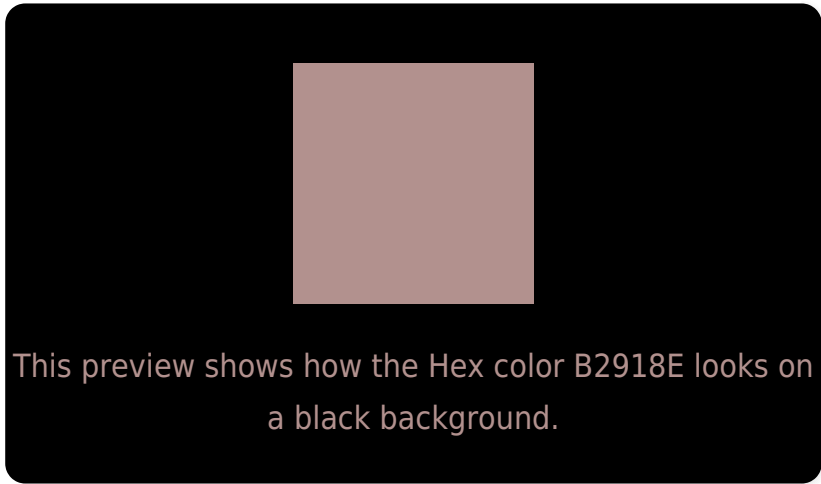
Large Text (above 18pt) WCAG AA × Fail

Any Text WCAG AA × Fail

Large Text (above 18pt) WCAG AAA × Fail

Any Text WCAG AAA × Fail

# Black Background



## Color Contrast Check

Large Text (above 18pt) WCAG AA ✓ Pass

Any Text WCAG AA ✓ Pass

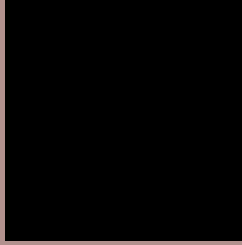
Large Text (above 18pt) WCAG AAA ✓ Pass

Any Text WCAG AAA ✓ Pass

If you want to check with other color combinations, try the [Color Contrast Checker](#).



## Hex B2918E Background



This preview shows how black text looks on a background with the Hex color B2918E.



This preview shows how white text looks on a background with the Hex color B2918E.

# Color Blindness Simulation

Color vision deficiency is a very complex topic, and I could not describe the different causes any better than Wikipedia does, so if you want to learn more, you should check out their [article about color blindness](#).

## Dichromacy





**Tritanopia**  
B38F9A

# Trichromacy



**Original Color**  
B2918E

**Protanomaly**  
A59591

**Deuteranomaly**  
AE928E

**Tritanomaly**  
B39096

# Monochromacy



**Original Color**  
B2918E

**Achromatopsia**  
9B9B9B

**Achromatomaly**  
A39796

# CSS Examples

## Text

The CSS property to change the color of the text to Hex B2918E is called "color". The color property can be set on classes, ids or directly on the HTML element.

This example shows how text in the color #B2918E looks like.

```
.text, #text, p{  
    color:#B2918E  
}
```

If you want to add a text shadow in that color use the text-shadow property, you can generate a text shadow directly with our [CSS Text Shadow Generator](#).

Here you see how black text with a 4 pixel #B2918E colored shadow looks like.

```
.shadow{ text-shadow: 4px 4px 2px #B2918E
}
```

## Border

The CSS property to change the border of an element to Hex B2918E is called "border". The border property can be set on classes, ids or directly on the HTML element.

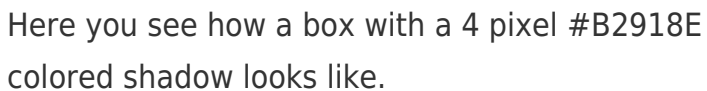
This example shows the color as border, it can be applied via the CSS property "border" or "border-color".

```
.border, #border, table{ border:4px solid
#B2918E }
```

If only the border color should be changed use the property `border-color`.

```
.border{ border-color:#B2918E }
```

If you want to add a box shadow in that color use:



Here you see how a box with a 4 pixel #B2918E colored shadow looks like.

```
.boxshadow{ -moz-box-shadow:4px 4px 4px  
4px #B2918E; -webkit-box-shadow:4px 4px  
4px 4px #B2918E; box-shadow:4px 4px 4px  
4px #B2918E }
```

# Background

The CSS property to change the background color of an element to Hex B2918E is called "background". The background property can be set on classes, ids or directly on the HTML element.

```
.background, #background, body{  
background:#B2918E }
```

If only the background color should be changed can be used:

```
.background{ background-color:#B2918E }
```

This example shows the color as background, it is applied via the CSS property "background".

To optimize and compress your CSS code, you can use our [online CSS compressor and optimizer](#) based on csstidy. If you want to create a linear or radial gradient as background or border, check our [CSS Gradient Generator](#).



Hey! You found this booklet interesting? Support Converting Colors with the new Membership Option!

The pro membership hides all ads, plus gives you double the colors in the color bucket, and more awesome pro features!

**[Learn more, Memberships starting at \\$2.50/m!](#)**

**Follow me  
on Twitter!**

@ConvertingColor