

Converting Colors

Hex(B29494)

Have a look what the booklet for
Hex(B29494) contains.

Hex(B29494)	3
<i>Conversions</i>	4
<i>Details</i>	6
<i>Harmonies</i>	11
<i>Previews</i>	23
<i>Color Blindness Simulation</i>	26
<i>CSS Examples</i>	29

Color

Hex(B29494)

Conversions

Conversions Part 1

Format	Color
Hex	B29494
RGB	178, 148, 148
RGB Percent	70%, 58%, 58%
CMY	0.3020, 0.4196, 0.4196
CMYK	0.00, 0.17, 0.17, 0.30
HSL	0°, 16%, 64%
HSV	0°, 17%, 70%
XYZ	34.2953, 32.7829, 32.5371
YIQ	156.9700, 17.8800, 6.3600

Conversions

Conversions Part 2

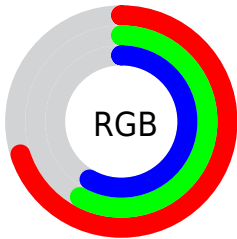
Format	Color
RYB	178, 148, 148
Decimal	11703444
CIELab	63.98, 11.20, 4.19
CIElCh	64, 11.958, 20.526
Yxy	32.7829, 0.3443, 0.3291
Android (android.graphics.Color)	4289893524 (0xFFB29494)
YUV	156.9700, -4.4222, 18.4433
Hunter-Lab	57.2564, 6.7189, 6.3866

Details

The Hex color **B29494** is a light color, and the websafe version is hex **CC9999**. A complement of this color would be **94B2B2**, and the grayscale version is **9D9D9D**.

A 20% lighter version of the original color is **EACACA**, and **7D6161** is the 20% darker color. If you saturate the color by 10%, you get **B28282**, and if you desaturate by 10%, it is **B2A6A6**.

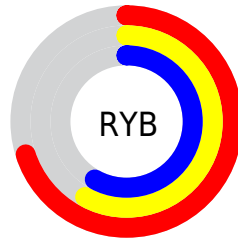
Distribution



Red (70%)

Green (58%)

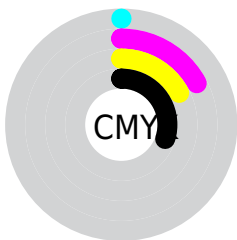
Blue (58%)



Red (70%)

Yellow (58%)

Blue (58%)

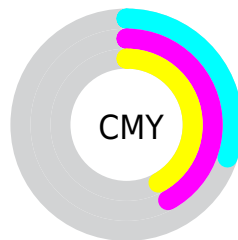


Cyan (0%)

Magenta (17%)

Yellow (17%)

Black (30%)



Cyan (30%)

Magenta (42%)

Yellow (42%)

Brightness & Saturation Gradients

These gradients show how the Hex color B29494 changes by changing the brightness by 10 percent. The first figure shows a shift by +10% for each color and the second figure -10%.

Similar to the brightness gradients but the following saturation gradients show a change of the Hex color B29494 by changing the saturation by 10% instead.

 B29494

 B29494

FFFFFF

 977A7A

 EACACA

 7D6161

 FFE6E6

 64494A

 4B3333

 341D1E

 200505

 000000

 B29494

 B29494

 B28282

 B2A6A6

 B27070

 B2B8B8

 B25F5F

 B2C9C9

 B24D4D

 B2DBDB

 B23B3B

 B2EDED

 B22929

 B2FFFF

 B21717

 B20606

 B20000

Harmonies

Analogous

The Analogous color harmony consists of three colors that are next to each other on the color wheel.



AF949F



B29494



AF968B

Triad

The Triadic color harmony groups three colors that are evenly spaced from another and form a triangle on the color wheel.



B29494



8FA08D



8C9DB0

Complementary

The Complementary color scheme is a pair of colors which are on the opposite of each other on the color wheel.



B29494



94B2B2

Split Complementary

Split-complementary colors differ from the complementary color scheme. The scheme consists of three colors, the original color and two neighbors of the complement color.



82A0AB



B29494



85A197

Square

The Square scheme is like the rectangle color scheme, but the four colors are evenly spaced on the color wheel.



B29494



9C9D87



80A1A2



9999AF

Rectangle

The Rectangle color scheme consists of four colors that form a rectangle on the color wheel.



B29494



AA9887



80A1A2



889EAF

Sweetspot

The Sweet Spot groups the original color and five complimentary colors.



B29494



E8DCDC



B294B2



756E6E



F5F5F5



757575

Same Dimension

The Same Dimension uses a secret algorithm to generate beautiful new colors.



B29494



E8BABA



B2A394



595050



990000



1A0000

Inverse Universe

The Inverse Universe completely reimagines the original color for something new.



94B2B2



BAE8E8



94A3B2



505959



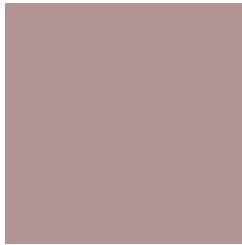
009999



001A1A

Previews

White Background



This preview shows how the Hex color B29494 looks on a white background.

Color Contrast Check

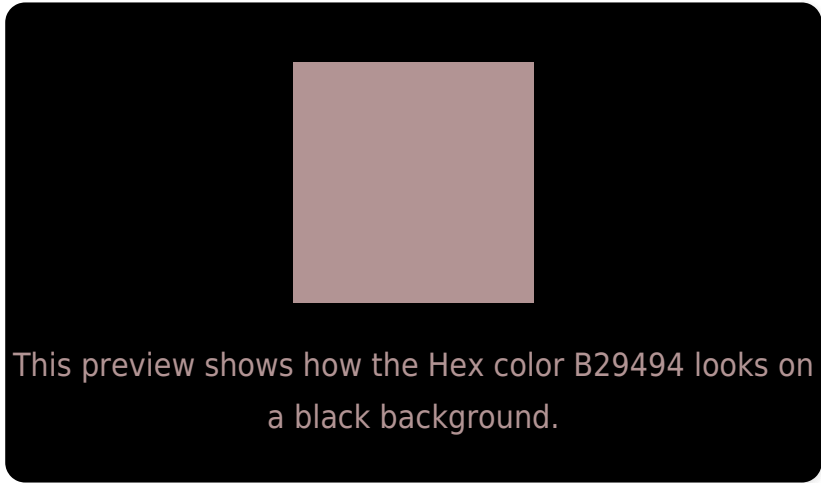
Large Text (above 18pt) WCAG AA × Fail

Any Text WCAG AA × Fail

Large Text (above 18pt) WCAG AAA × Fail

Any Text WCAG AAA × Fail

Black Background



Color Contrast Check

Large Text (above 18pt) WCAG AA ✓ Pass

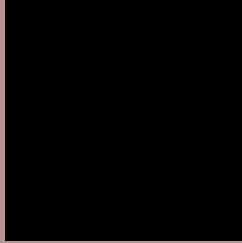
Any Text WCAG AA ✓ Pass

Large Text (above 18pt) WCAG AAA ✓ Pass

Any Text WCAG AAA ✓ Pass

If you want to check with other color combinations, try the [Color Contrast Checker](#).

Hex B29494 Background



This preview shows how black text looks on a background with the Hex color B29494.



This preview shows how white text looks on a background with the Hex color B29494.

Color Blindness Simulation

Color vision deficiency is a very complex topic, and I could not describe the different causes any better than Wikipedia does, so if you want to learn more, you should check out their [article about color blindness](#).

Dichromacy



Original Color
B29494

Protanopia
9F9B98

Deuteranopia
AD9694



Tritanopia
B3929E

Trichromacy



Original Color
B29494

Protanomaly
A69897

Deuteranomaly
AF9594

Tritanomaly
B3939A

Monochromacy



Original Color
B29494

Achromatopsia
9D9D9D

Achromatomaly
A59A9A

CSS Examples

Text

The CSS property to change the color of the text to Hex B29494 is called "color". The color property can be set on classes, ids or directly on the HTML element.

This example shows how text in the color #B29494 looks like.

```
.text, #text, p{  
    color:#B29494  
}
```

If you want to add a text shadow in that color use the text-shadow property, you can generate a text shadow directly with our [CSS Text Shadow Generator](#).

Here you see how black text with a 4 pixel #B29494 colored shadow looks like.

```
.shadow{ text-shadow: 4px 4px 2px #B29494
}
```

Border

The CSS property to change the border of an element to Hex B29494 is called "border". The border property can be set on classes, ids or directly on the HTML element.

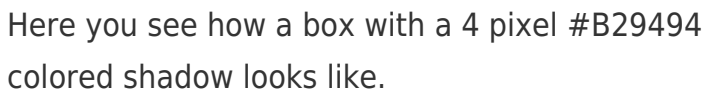
This example shows the color as border, it can be applied via the CSS property "border" or "border-color".

```
.border, #border, table{ border:4px solid
#B29494 }
```

If only the border color should be changed use the property `border-color`.

```
.border{ border-color:#B29494 }
```

If you want to add a box shadow in that color use:



Here you see how a box with a 4 pixel #B29494 colored shadow looks like.

```
.boxshadow{ -moz-box-shadow:4px 4px 4px  
4px #B29494; -webkit-box-shadow:4px 4px  
4px 4px #B29494; box-shadow:4px 4px 4px  
4px #B29494 }
```

Background

The CSS property to change the background color of an element to Hex B29494 is called "background". The background property can be set on classes, ids or directly on the HTML element.

```
.background, #background, body{  
background:#B29494 }
```

If only the background color should be changed can be used:

```
.background{ background-color:#B29494 }
```

This example shows the color as background, it is applied via the CSS property "background".

To optimize and compress your CSS code, you can use our [online CSS compressor and optimizer](#) based on csstidy. If you want to create a linear or radial gradient as background or border, check our [CSS Gradient Generator](#).

Hey! You found this booklet interesting? Support Converting Colors with the new Membership Option!

The pro membership hides all ads, plus gives you double the colors in the color bucket, and more awesome pro features!

[Learn more, Memberships starting at \\$2.50/m!](#)

**Follow me
on Twitter!**

@ConvertingColor