

Converting Colors

Hex(B2977E)

Have a look what the booklet for
Hex(B2977E) contains.

Hex(B2977E)	3
<i>Conversions</i>	4
<i>Details</i>	6
<i>Harmonies</i>	11
<i>Previews</i>	23
<i>Color Blindness Simulation</i>	26
<i>CSS Examples</i>	29

Color

Hex(B2977E)

Conversions

Conversions Part 1

Format	Color
Hex	B2977E
RGB	178, 151, 126
RGB Percent	70%, 59%, 49%
CMY	0.3020, 0.4078, 0.5059
CMYK	0.00, 0.15, 0.29, 0.30
HSL	29°, 25%, 60%
HSV	29°, 29%, 70%
XYZ	33.1926, 33.1046, 24.3790
YIQ	156.2230, 24.1170, -2.0510

Conversions

Conversions Part 2

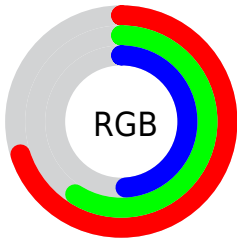
Format	Color
RYB	178, 174, 126
Decimal	11704190
CIELab	64.25, 6.22, 16.91
CIELCh	64, 18.016, 69.808
Yxy	33.1046, 0.3661, 0.3651
Android (android.graphics.Color)	4289894270 (0xFFB2977E)
YUV	156.2230, -14.8999, 19.0984
Hunter-Lab	57.5366, 2.2869, 15.1536

Details

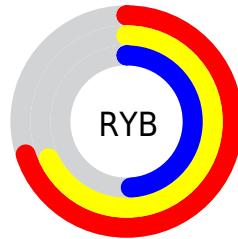
The Hex color **B2977E** is a light color, and the websafe version is hex **CC9999**. A complement of this color would be **7E99B2**, and the grayscale version is **9C9C9C**.

A 20% lighter version of the original color is **EACDB3**, and **7C644D** is the 20% darker color. If you saturate the color by 10%, you get **B28E6C**, and if you desaturate by 10%, it is **B2A090**.

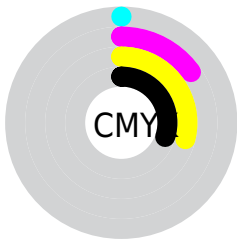
Distribution



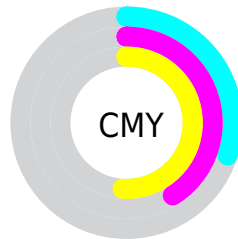
- Red (70%)
- Green (59%)
- Blue (49%)



- Red (70%)
- Yellow (68%)
- Blue (49%)



- Cyan (0%)
- Magenta (15%)
- Yellow (29%)
- Black (30%)



- Cyan (30%)
- Magenta (41%)
- Yellow (51%)

Brightness & Saturation Gradients

These gradients show how the Hex color B2977E changes by changing the brightness by 10 percent. The first figure shows a shift by +10% for each color and the second figure -10%.

Similar to the brightness gradients but the following saturation gradients show a change of the Hex color B2977E by changing the saturation by 10% instead.



B2977E



B2977E

FFFFFF



977D65



EACDB3



7C644D



FFE9CE



634C36



FFFFEB



4A3620



33200A



1D0A00



000000



B2977E



B2977E



B28E6C



B2A090

 B2855A

 B2A9A2

 B27B49

 B2B3B3

 B27237

 B2BCC5

 B26925

 B2C5D7

 B26013

 B2CEE9

 B25601

 B2D8FB

 B25600

 B2E1FF

 B2EAFF

Harmonies

Analogous

The Analogous color harmony consists of three colors that are next to each other on the color wheel.



BB9288



B2977E



A39C7C

Triad

The Triadic color harmony groups three colors that are evenly spaced from another and form a triangle on the color wheel.



B2977E



72A5A1



A596B4

Complementary

The Complementary color scheme is a pair of colors which are on the opposite of each other on the color wheel.



B2977E



7E99B2

Split Complementary

Split-complementary colors differ from the complementary color scheme. The scheme consists of three colors, the original color and two neighbors of the complement color.



909BBB



B2977E



71A4B0

Square

The Square scheme is like the rectangle color scheme, but the four colors are evenly spaced on the color wheel.



B2977E



7FA490



7CA0B9



B592A7

Rectangle

The Rectangle color scheme consists of four colors that form a rectangle on the color wheel.



B2977E



97A080



7CA0B9



9E98B8

Sweetspot

The Sweet Spot groups the original color and five complimentary colors.



B2977E



E8DDD3



B27E9A



756F68



F5F5F5



757575

Same Dimension

The Same Dimension uses a secret algorithm to generate beautiful new colors.



B2977E



E8BE97



B2B07E



595550



994A00



1A0C00

Inverse Universe

The Inverse Universe completely reimagines the original color for something new.



7E99B2



97C1E8



7E80B2



505559



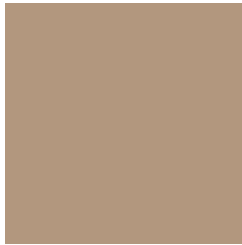
004F99



000D1A

Previews

White Background



This preview shows how the Hex color B2977E looks on a white background.

Color Contrast Check

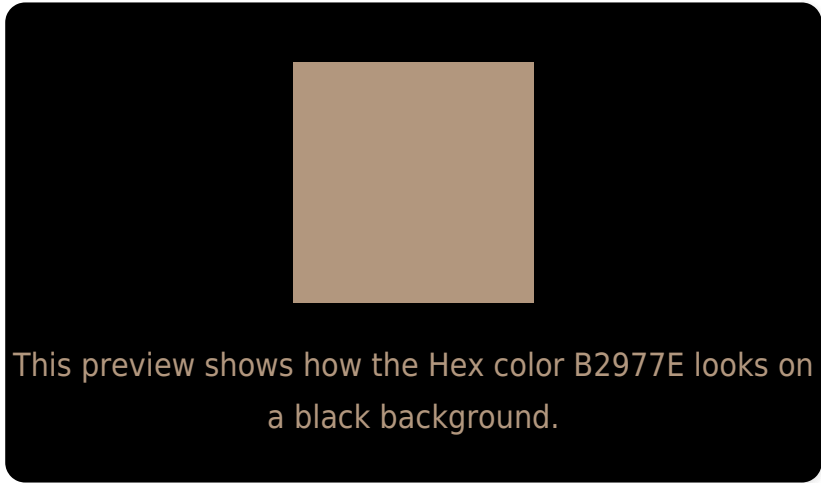
Large Text (above 18pt) WCAG AA × Fail

Any Text WCAG AA × Fail

Large Text (above 18pt) WCAG AAA × Fail

Any Text WCAG AAA × Fail

Black Background



Color Contrast Check

Large Text (above 18pt) WCAG AA ✓ Pass

Any Text WCAG AA ✓ Pass

Large Text (above 18pt) WCAG AAA ✓ Pass

Any Text WCAG AAA ✓ Pass

If you want to check with other color combinations, try the [Color Contrast Checker](#).

Hex B2977E Background



This preview shows how black text looks on a background with the Hex color B2977E.



This preview shows how white text looks on a background with the Hex color B2977E.

Color Blindness Simulation

Color vision deficiency is a very complex topic, and I could not describe the different causes any better than Wikipedia does, so if you want to learn more, you should check out their [article about color blindness](#).

Dichromacy



Original Color
B2977E

Protanopia
A59C80

Deuteranopia
B5967E



Tritanopia
B6939E

Trichromacy



Original Color
B2977E

Protanomaly
AA9A7F

Deuteranomaly
B4967E

Tritanomaly
B59492

Monochromacy



Original Color
B2977E

Achromatopsia
9C9C9C

Achromatomaly
A49A91

CSS Examples

Text

The CSS property to change the color of the text to Hex B2977E is called "color". The color property can be set on classes, ids or directly on the HTML element.

This example shows how text in the color #B2977E looks like.

```
.text, #text, p{  
    color:#B2977E  
}
```

If you want to add a text shadow in that color use the text-shadow property, you can generate a text shadow directly with our [CSS Text Shadow Generator](#).

Here you see how black text with a 4 pixel #B2977E colored shadow looks like.

```
.shadow{ text-shadow: 4px 4px 2px #B2977E
}
```

Border

The CSS property to change the border of an element to Hex B2977E is called "border". The border property can be set on classes, ids or directly on the HTML element.

This example shows the color as border, it can be applied via the CSS property "border" or "border-color".

```
.border, #border, table{ border:4px solid
#B2977E }
```

If only the border color should be changed use the property `border-color`.

```
.border{ border-color:#B2977E }
```

If you want to add a box shadow in that color use:

Here you see how a box with a 4 pixel #B2977E colored shadow looks like.

```
.boxshadow{ -moz-box-shadow:4px 4px 4px  
4px #B2977E; -webkit-box-shadow:4px 4px  
4px 4px #B2977E; box-shadow:4px 4px 4px  
4px #B2977E }
```

Background

The CSS property to change the background color of an element to Hex B2977E is called "background". The background property can be set on classes, ids or directly on the HTML element.

```
.background, #background, body{  
background:#B2977E }
```

If only the background color should be changed can be used:

```
.background{ background-color:#B2977E }
```

This example shows the color as background, it is applied via the CSS property "background".

To optimize and compress your CSS code, you can use our [online CSS compressor and optimizer](#) based on csstidy. If you want to create a linear or radial gradient as background or border, check our [CSS Gradient Generator](#).

Hey! You found this booklet interesting? Support Converting Colors with the new Membership Option!

The pro membership hides all ads, plus gives you double the colors in the color bucket, and more awesome pro features!

[Learn more, Memberships starting at \\$2.50/m!](#)

**Follow me
on Twitter!**

@ConvertingColor