

Converting Colors

Hex(B29D9B)

Have a look what the booklet for
Hex(B29D9B) contains.

Hex(B29D9B)	3
<i>Conversions</i>	4
<i>Details</i>	6
<i>Harmonies</i>	11
<i>Previews</i>	23
<i>Color Blindness Simulation</i>	26
<i>CSS Examples</i>	29

Color

Hex(B29D9B)

Conversions

Conversions Part 1

Format	Color
Hex	B29D9B
RGB	178, 157, 155
RGB Percent	70%, 62%, 61%
CMY	0.3020, 0.3843, 0.3922
CMYK	0.00, 0.12, 0.13, 0.30
HSL	5°, 13%, 65%
HSV	5°, 13%, 70%
XYZ	36.3335, 35.9455, 36.0335
YIQ	163.0510, 13.1580, 3.8300

Conversions

Conversions Part 2

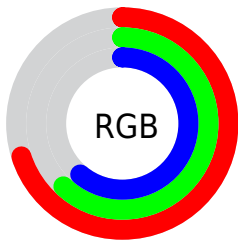
Format	Color
RYB	178, 157, 155
Decimal	11705755
CIELab	66.48, 7.37, 3.86
CIELCh	66, 8.319, 27.679
Yxy	35.9455, 0.3355, 0.3319
Android (android.graphics.Color)	4289895835 (0xFFB29D9B)
YUV	163.0510, -3.9691, 13.1103
Hunter-Lab	59.9545, 3.2535, 6.3340

Details

The Hex color **B29D9B** is a light color, and the websafe version is hex **999999**. A complement of this color would be **9BB0B2**, and the grayscale version is **A3A3A3**.

A 20% lighter version of the original color is **EAD4D1**, and **7D6A68** is the 20% darker color. If you saturate the color by 10%, you get **B28D89**, and if you desaturate by 10%, it is **B2ADAD**.

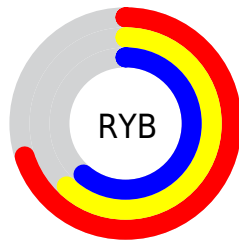
Distribution



Red (70%)

Green (62%)

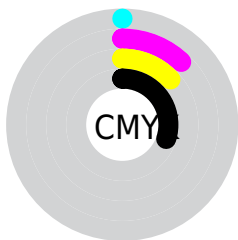
Blue (61%)



Red (70%)

Yellow (62%)

Blue (61%)

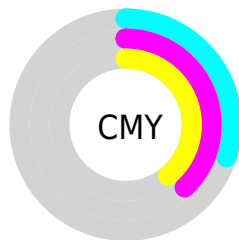


Cyan (0%)

Magenta (12%)

Yellow (13%)

Black (30%)



Cyan (30%)

Magenta (38%)

Yellow (39%)

Brightness & Saturation Gradients

These gradients show how the Hex color B29D9B changes by changing the brightness by 10 percent. The first figure shows a shift by +10% for each color and the second figure -10%.

Similar to the brightness gradients but the following saturation gradients show a change of the Hex color B29D9B by changing the saturation by 10% instead.

 B29D9B

 B29D9B

FFFFFF

 978381

 EAD4D1

 7D6A68

 FFF0EE

 645250

 4C3B39

 352524

 20100E

 000000

 B29D9B

 B29D9B

 B28D89

 B2ADAD

 B27C77

 B2BEBF

 B26C66

 B2CED0

 B25C54

 B2DEE2

 B24C42

 B2EEF4

 B23B30

 B2FFFF

 B22B1E

 B21B0D

 B20F00

Harmonies

Analogous

The Analogous color harmony consists of three colors that are next to each other on the color wheel.



B19DA2



B29D9B



AF9F95

Triad

The Triadic color harmony groups three colors that are evenly spaced from another and form a triangle on the color wheel.



B29D9B



98A599



99A2B0

Complementary

The Complementary color scheme is a pair of colors which are on the opposite of each other on the color wheel.



B29D9B



9BB0B2

Split Complementary

Split-complementary colors differ from the complementary color scheme. The scheme consists of three colors, the original color and two neighbors of the complement color.



92A5AE



B29D9B



91A6A1

Square

The Square scheme is like the rectangle color scheme, but the four colors are evenly spaced on the color wheel.



B29D9B



A0A394



8FA6A8



A3A0AF

Rectangle

The Rectangle color scheme consists of four colors that form a rectangle on the color wheel.



B29D9B



ABA093



8FA6A8



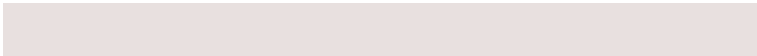
97A3B0

Sweetspot

The Sweet Spot groups the original color and five complimentary colors.



B29D9B



E8E0DF



B29BB0



75706F



F5F5F5



757575

Same Dimension

The Same Dimension uses a secret algorithm to generate beautiful new colors.



B29D9B



E8C6C3



B2A89B



595150



990D00



1A0200

Inverse Universe

The Inverse Universe completely reimagines the original color for something new.



9BB0B2



C3E5E8



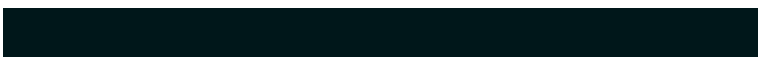
9BA5B2



505859



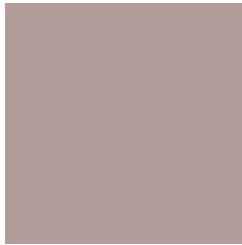
008C99



00171A

Previews

White Background



This preview shows how the Hex color B29D9B looks on a white background.

Color Contrast Check

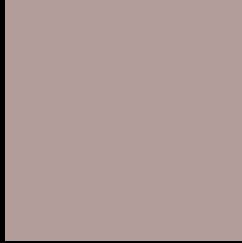
Large Text (above 18pt) WCAG AA × Fail

Any Text WCAG AA × Fail

Large Text (above 18pt) WCAG AAA × Fail

Any Text WCAG AAA × Fail

Black Background



This preview shows how the Hex color B29D9B looks on a black background.

Color Contrast Check

Large Text (above 18pt) WCAG AA ✓ Pass

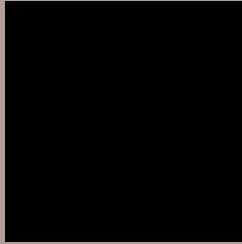
Any Text WCAG AA ✓ Pass

Large Text (above 18pt) WCAG AAA ✓ Pass

Any Text WCAG AAA ✓ Pass

If you want to check with other color combinations, try the [Color Contrast Checker](#).

Hex B29D9B Background



This preview shows how black text looks on a background with the Hex color B29D9B.

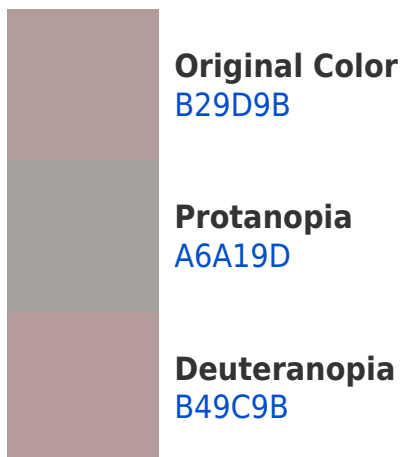


This preview shows how white text looks on a background with the Hex color B29D9B.

Color Blindness Simulation

Color vision deficiency is a very complex topic, and I could not describe the different causes any better than Wikipedia does, so if you want to learn more, you should check out their [article about color blindness](#).

Dichromacy





Tritanopia
B49BA7

Trichromacy



Original Color
B29D9B

Protanomaly
AAA09C

Deuteranomaly
B39C9B

Tritanomaly
B39CA3

Monochromacy



Original Color
B29D9B

Achromatopsia
A3A3A3

Achromatomaly
A8A1A0

CSS Examples

Text

The CSS property to change the color of the text to Hex B29D9B is called "color". The color property can be set on classes, ids or directly on the HTML element.

This example shows how text in the color #B29D9B looks like.

```
.text, #text, p{  
    color:#B29D9B  
}
```

If you want to add a text shadow in that color use the text-shadow property, you can generate a text shadow directly with our [CSS Text Shadow Generator](#).

Here you see how black text with a 4 pixel #B29D9B colored shadow looks like.

```
.shadow{ text-shadow: 4px 4px 2px #B29D9B
}
```

Border

The CSS property to change the border of an element to Hex B29D9B is called "border". The border property can be set on classes, ids or directly on the HTML element.

This example shows the color as border, it can be applied via the CSS property "border" or "border-color".

```
.border, #border, table{ border:4px solid
#B29D9B }
```

If only the border color should be changed use the property `border-color`.

```
.border{ border-color:#B29D9B }
```

If you want to add a box shadow in that color use:

Here you see how a box with a 4 pixel #B29D9B colored shadow looks like.

```
.boxshadow{ -moz-box-shadow:4px 4px 4px  
4px #B29D9B; -webkit-box-shadow:4px 4px  
4px 4px #B29D9B; box-shadow:4px 4px 4px  
4px #B29D9B }
```

Background

The CSS property to change the background color of an element to Hex B29D9B is called "background". The background property can be set on classes, ids or directly on the HTML element.

```
.background, #background, body{  
background:#B29D9B }
```

If only the background color should be changed can be used:

```
.background{ background-color:#B29D9B }
```

This example shows the color as background, it is applied via the CSS property "background".

To optimize and compress your CSS code, you can use our [online CSS compressor and optimizer](#) based on csstidy. If you want to create a linear or radial gradient as background or border, check our [CSS Gradient Generator](#).

Hey! You found this booklet interesting? Support Converting Colors with the new Membership Option!

The pro membership hides all ads, plus gives you double the colors in the color bucket, and more awesome pro features!

[Learn more, Memberships starting at \\$2.50/m!](#)

**Follow me
on Twitter!**

@ConvertingColor