

# Converting Colors

Hex(B29D9E)

Have a look what the booklet for  
Hex(B29D9E) contains.

<b>Hex(B29D9E)</b> .....	3
<i><b>Conversions</b></i> .....	4
<i><b>Details</b></i> .....	6
<i><b>Harmonies</b></i> .....	11
<i><b>Previews</b></i> .....	23
<i><b>Color Blindness Simulation</b></i> .....	26
<i><b>CSS Examples</b></i> .....	29

# **Color**

**Hex(B29D9E)**

# Conversions

## Conversions Part 1

Format	Color
Hex	B29D9E
RGB	178, 157, 158
RGB Percent	70%, 62%, 62%
CMY	0.3020, 0.3843, 0.3804
CMYK	0.00, 0.12, 0.11, 0.30
HSL	357°, 12%, 66%
HSV	357°, 12%, 70%
XYZ	36.5886, 36.0475, 37.3772
YIQ	163.3930, 12.1950, 4.7630

# Conversions

## Conversions Part 2

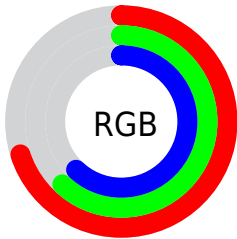
Format	Color
<a href="#">RYB</a>	<a href="#">178, 157, 158</a>
Decimal	<a href="#">11705758</a>
CIELab	<a href="#">66.56, 7.88, 2.30</a>
CIELCh	<a href="#">67, 8.208, 16.277</a>
Yxy	<a href="#">36.0475, 0.3326, 0.3277</a>
Android (android.graphics.Color)	<a href="#">4289895838</a> ( <a href="#">0xFFB29D9E</a> )
YUV	<a href="#">163.3930, -2.6587, 12.8103</a>
Hunter-Lab	<a href="#">60.0396, 3.7100, 5.1172</a>

# Details

The Hex color **B29D9E** is a light color, and the websafe version is hex **999999**. A complement of this color would be **9DB2B1**, and the grayscale version is **A3A3A3**.

A 20% lighter version of the original color is **EAD4D5**, and **7D6A6B** is the 20% darker color. If you saturate the color by 10%, you get **B28B8D**, and if you desaturate by 10%, it is **B2AFAF**.

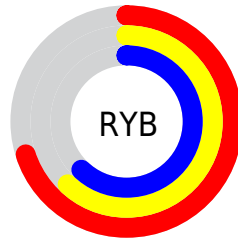
# Distribution



Red (70%)

Green (62%)

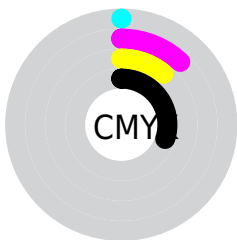
Blue (62%)



Red (70%)

Yellow (62%)

Blue (62%)

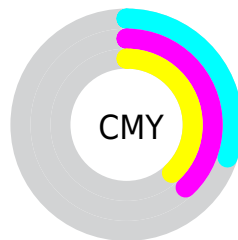


Cyan (0%)

Magenta (12%)

Yellow (11%)

Black (30%)



Cyan (30%)

Magenta (38%)

Yellow (38%)

# Brightness & Saturation Gradients

These gradients show how the Hex color B29D9E changes by changing the brightness by 10 percent. The first figure shows a shift by +10% for each color and the second figure -10%.

Similar to the brightness gradients but the following saturation gradients show a change of the Hex color B29D9E by changing the saturation by 10% instead.



 B29D9E

 B29D9E

FFFFFF

 978384

 EAD4D5

 7D6A6B

 FFF0F1

 645253

 4C3B3C

 352526

 201011

 000000

 B29D9E

 B29D9E

 B28B8D

 B2AFAF

 B2797C

 B2C1C0

 B2686B

 B2D2D1

 B2565A

 B2E4E2

 B24449

 B2F6F3

 B23238

 B2FFFF

 B22027

 B20F16

 B20008

# Harmonies

## Analogous

The Analogous color harmony consists of three colors that are next to each other on the color wheel.



AF9DA6



B29D9E



B19E97

# Triad

The Triadic color harmony groups three colors that are evenly spaced from another and form a triangle on the color wheel.



B29D9E



9BA598



97A4B0

# Complementary

The Complementary color scheme is a pair of colors which are on the opposite of each other on the color wheel.



B29D9E



9DB2B1

# Split Complementary

Split-complementary colors differ from the complementary color scheme. The scheme consists of three colors, the original color and two neighbors of the complement color.



91A5AC



B29D9E



94A69E

# Square

The Square scheme is like the rectangle color scheme, but the four colors are evenly spaced on the color wheel.



B29D9E



A4A394



90A6A6



9FA1B0

# Rectangle

The Rectangle color scheme consists of four colors that form a rectangle on the color wheel.



B29D9E



AE9F95



90A6A6



94A4AF



# Sweetspot

The Sweet Spot groups the original color and five complimentary colors.



B29D9E



E8DFDF



B19DB2



756F70



F5F5F5



757575



# Same Dimension

The Same Dimension uses a secret algorithm to generate beautiful new colors.



B29D9E



E8C8C9



B2A69D



595051



990007



1A0001



# Inverse Universe

The Inverse Universe completely reimagines the original color for something new.



B29D9E



E8C8C9



9DA9B2



595051



990007

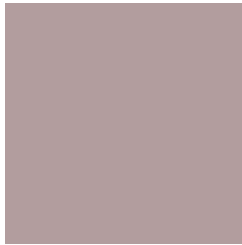


1A0001



# Previews

## White Background



This preview shows how the Hex color B29D9E looks on a white background.

## Color Contrast Check

Large Text (above 18pt) WCAG AA × Fail

Any Text WCAG AA × Fail

Large Text (above 18pt) WCAG AAA × Fail

Any Text WCAG AAA × Fail

# Black Background



This preview shows how the Hex color B29D9E looks on a black background.

## Color Contrast Check

Large Text (above 18pt) WCAG AA ✓ Pass

Any Text WCAG AA ✓ Pass

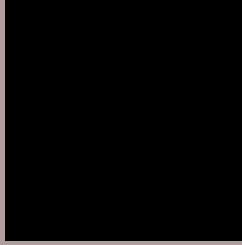
Large Text (above 18pt) WCAG AAA ✓ Pass

Any Text WCAG AAA ✓ Pass

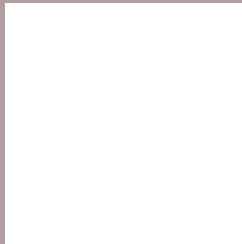
If you want to check with other color combinations, try the [Color Contrast Checker](#).



## Hex B29D9E Background



This preview shows how black text looks on a background with the Hex color B29D9E.

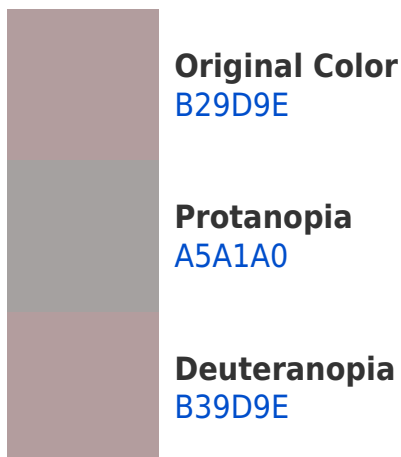


This preview shows how white text looks on a background with the Hex color B29D9E.

# Color Blindness Simulation

Color vision deficiency is a very complex topic, and I could not describe the different causes any better than Wikipedia does, so if you want to learn more, you should check out their [article about color blindness](#).

## Dichromacy





**Tritanopia**  
B39BA8

# Trichromacy



**Original Color**  
B29D9E

**Protanomaly**  
AAA09F

**Deuteranomaly**  
B39D9E

**Tritanomaly**  
B39CA4

# Monochromacy



**Original Color**  
B29D9E

**Achromatopsia**  
A3A3A3

**Achromatomaly**  
A8A1A1

# CSS Examples

## Text

The CSS property to change the color of the text to Hex B29D9E is called "color". The color property can be set on classes, ids or directly on the HTML element.

This example shows how text in the color #B29D9E looks like.

```
.text, #text, p{  
    color:#B29D9E  
}
```

If you want to add a text shadow in that color use the text-shadow property, you can generate a text shadow directly with our [CSS Text Shadow Generator](#).

Here you see how black text with a 4 pixel #B29D9E colored shadow looks like.

```
.shadow{ text-shadow: 4px 4px 2px #B29D9E
}
```

## Border

The CSS property to change the border of an element to Hex B29D9E is called "border". The border property can be set on classes, ids or directly on the HTML element.

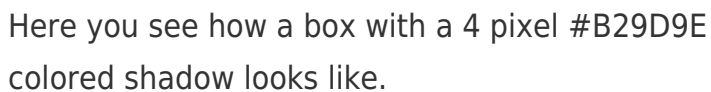
This example shows the color as border, it can be applied via the CSS property "border" or "border-color".

```
.border, #border, table{ border:4px solid
#B29D9E }
```

If only the border color should be changed use the property `border-color`.

```
.border{ border-color:#B29D9E }
```

If you want to add a box shadow in that color use:



Here you see how a box with a 4 pixel #B29D9E colored shadow looks like.

```
.boxshadow{ -moz-box-shadow:4px 4px 4px  
4px #B29D9E; -webkit-box-shadow:4px 4px  
4px 4px #B29D9E; box-shadow:4px 4px 4px  
4px #B29D9E }
```

# Background

The CSS property to change the background color of an element to Hex B29D9E is called "background". The background property can be set on classes, ids or directly on the HTML element.

```
.background, #background, body{  
background:#B29D9E }
```

If only the background color should be changed can be used:

```
.background{ background-color:#B29D9E }
```

This example shows the color as background, it is applied via the CSS property "background".

To optimize and compress your CSS code, you can use our [online CSS compressor and optimizer](#) based on csstidy. If you want to create a linear or radial gradient as background or border, check our [CSS Gradient Generator](#).



Hey! You found this booklet interesting? Support Converting Colors with the new Membership Option!

The pro membership hides all ads, plus gives you double the colors in the color bucket, and more awesome pro features!

**[Learn more, Memberships starting at \\$2.50/m!](#)**

**Follow me  
on Twitter!**

@ConvertingColor