

Converting Colors

Hex(B35C5A)

Have a look what the booklet for
Hex(B35C5A) contains.

Hex(B35C5A)	3
<i>Conversions</i>	4
<i>Details</i>	6
<i>Harmonies</i>	11
<i>Previews</i>	23
<i>Color Blindness Simulation</i>	26
<i>CSS Examples</i>	29

Color

Hex(B35C5A)

Conversions

Conversions Part 1

Format	Color
Hex	B35C5A
RGB	179, 92, 90
RGB Percent	70%, 36%, 35%
CMY	0.2980, 0.6392, 0.6471
CMYK	0.00, 0.49, 0.50, 0.30
HSL	1°, 37%, 53%
HSV	1°, 50%, 70%
XYZ	24.2630, 17.9762, 11.8638
YIQ	117.7850, 52.4940, 17.8220

Conversions

Conversions Part 2

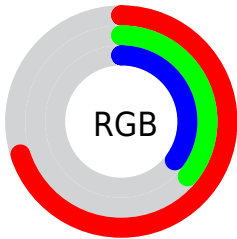
Format	Color
R _Y B	179, 92, 90
Decimal	11754586
CIE Lab	49.47, 34.99, 17.35
CIE LCh	49, 39.058, 26.372
Yxy	17.9762, 0.4485, 0.3323
Android (android.graphics.Color)	4289944666 (0xFFB35C5A)
YUV	117.7850, -13.6980, 53.6856
Hunter-Lab	42.3983, 27.9520, 13.0884

Details

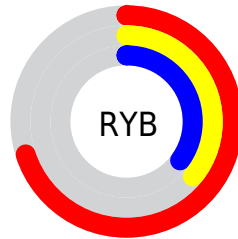
The Hex color **B35C5A** is a dark color, and the websafe version is hex **CC6666**. A complement of this color would be **5AB1B3**, and the grayscale version is **767676**.

A 20% lighter version of the original color is **EE908C**, and **7A2A2C** is the 20% darker color. If you saturate the color by 10%, you get **B34B48**, and if you desaturate by 10%, it is **B36D6C**.

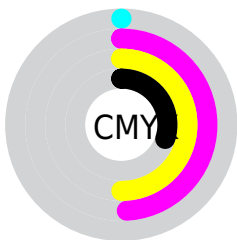
Distribution



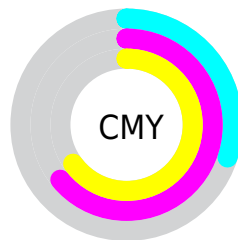
- Red (70%)
- Green (36%)
- Blue (35%)



- Red (70%)
- Yellow (36%)
- Blue (35%)



- Cyan (0%)
- Magenta (49%)
- Yellow (50%)
- Black (30%)



- Cyan (30%)
- Magenta (64%)
- Yellow (65%)

Brightness & Saturation Gradients

These gradients show how the Hex color B35C5A changes by changing the brightness by 10 percent. The first figure shows a shift by +10% for each color and the second figure -10%.

Similar to the brightness gradients but the following saturation gradients show a change of the Hex color B35C5A by changing the saturation by 10% instead.

 B35C5A

 B35C5A

FFFFFF

 964343

 EE908C

 7A2A2C

 FFABA6

 5F1018

 FFC7C2

 440000

 FFE3DD

 2D0001

 FFFFFA

 000000

 B35C5A

 B35C5A

 B34B48

 B36D6C

 B33936

 B37F7E

 B32824

 B39090

 B31612

 B3A2A2

 B30501

 B3B3B3

 B30400

 B3C5C5

 B3D6D7

 B3E8E9

 B3F9FB

Harmonies

Analogous

The Analogous color harmony consists of three colors that are next to each other on the color wheel.



B05A7B



B35C5A



A6663F

Triad

The Triadic color harmony groups three colors that are evenly spaced from another and form a triangle on the color wheel.



B35C5A



438350



2C7AB7

Complementary

The Complementary color scheme is a pair of colors which are on the opposite of each other on the color wheel.



B35C5A



5AB1B3

Split Complementary

Split-complementary colors differ from the complementary color scheme. The scheme consists of three colors, the original color and two neighbors of the complement color.



0082AC



B35C5A



008670

Square

The Square scheme is like the rectangle color scheme, but the four colors are evenly spaced on the color wheel.



B35C5A



6C7C38



008692



716FB1

Rectangle

The Rectangle color scheme consists of four colors that form a rectangle on the color wheel.



B35C5A



966E34



008692



007DB6

Sweetspot

The Sweet Spot groups the original color and five complimentary colors.



B35C5A



E8C6C5



B35AB2



756160



F5F5F5



757575

Same Dimension

The Same Dimension uses a secret algorithm to generate beautiful new colors.



B35C5A



E8605D



B3885A



595150



990300



1A0100

Inverse Universe

The Inverse Universe completely reimagines the original color for something new.



5AB1B3



5DE5E8



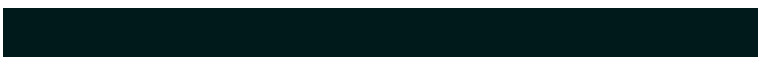
5A85B3



505959



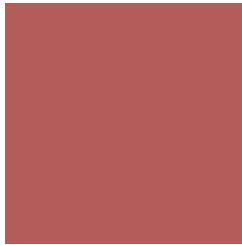
009699



00191A

Previews

White Background



This preview shows how the Hex color B35C5A looks on a white background.

Color Contrast Check

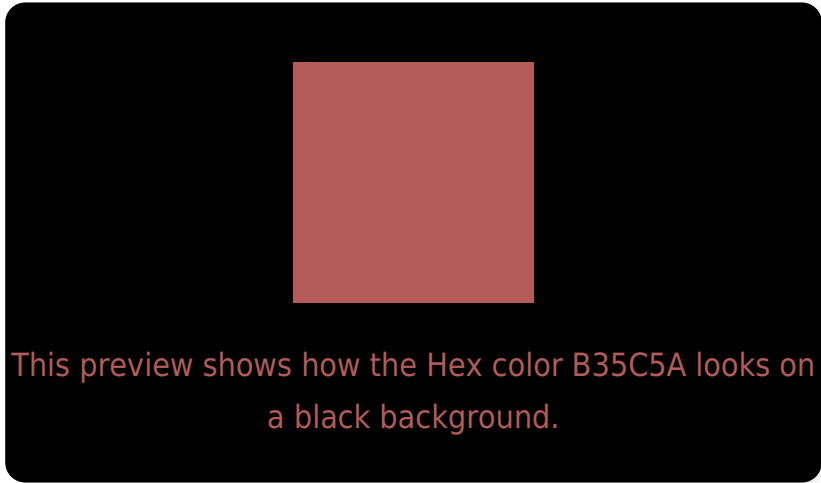
Large Text (above 18pt) WCAG AA ✓ Pass

Any Text WCAG AA ✓ Pass

Large Text (above 18pt) WCAG AAA ✓ Pass

Any Text WCAG AAA × Fail

Black Background



Color Contrast Check

Large Text (above 18pt) WCAG AA ✓ Pass

Any Text WCAG AA ✓ Pass

Large Text (above 18pt) WCAG AAA ✓ Pass

Any Text WCAG AAA × Fail

If you want to check with other color combinations, try the [Color Contrast Checker](#).

Hex B35C5A Background



This preview shows how black text looks on a background with the Hex color B35C5A.



This preview shows how white text looks on a background with the Hex color B35C5A.

Color Blindness Simulation

Color vision deficiency is a very complex topic, and I could not describe the different causes any better than Wikipedia does, so if you want to learn more, you should check out their [article about color blindness](#).

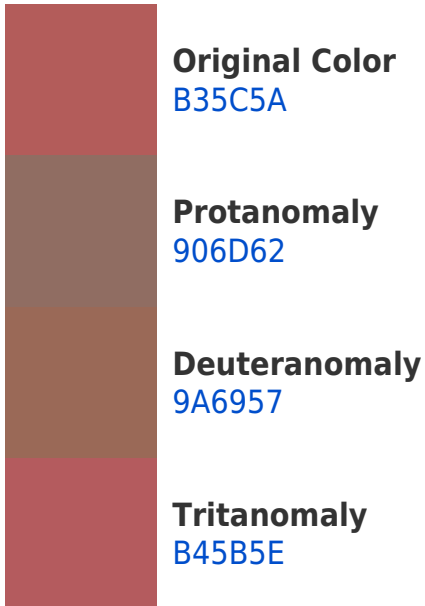
Dichromacy





Tritanopia
B45B61

Trichromacy



Monochromacy



CSS Examples

Text

The CSS property to change the color of the text to Hex B35C5A is called "color". The color property can be set on classes, ids or directly on the HTML element.

This example shows how text in the color #B35C5A looks like.

```
.text, #text, p{  
    color:#B35C5A  
}
```

If you want to add a text shadow in that color use the text-shadow property, you can generate a text shadow directly with our [CSS Text Shadow Generator](#).

Here you see how black text with a 4 pixel #B35C5A colored shadow looks like.

```
.shadow{ text-shadow: 4px 4px 2px #B35C5A
}
```

Border

The CSS property to change the border of an element to Hex B35C5A is called "border". The border property can be set on classes, ids or directly on the HTML element.

This example shows the color as border, it can be applied via the CSS property "border" or "border-color".

```
.border, #border, table{ border:4px solid
#B35C5A }
```

If only the border color should be changed use the property `border-color`.

```
.border{ border-color:#B35C5A }
```

If you want to add a box shadow in that color use:

Here you see how a box with a 4 pixel #B35C5A colored shadow looks like.

```
.boxshadow{ -moz-box-shadow:4px 4px 4px  
4px #B35C5A; -webkit-box-shadow:4px 4px  
4px 4px #B35C5A; box-shadow:4px 4px 4px  
4px #B35C5A }
```

Background

The CSS property to change the background color of an element to Hex B35C5A is called "background". The background property can be set on classes, ids or directly on the HTML element.

```
.background, #background, body{  
background:#B35C5A }
```

If only the background color should be changed can be used:

```
.background{ background-color:#B35C5A }
```

This example shows the color as background, it is applied via the CSS property "background".

To optimize and compress your CSS code, you can use our [online CSS compressor and optimizer](#) based on csstidy. If you want to create a linear or radial gradient as background or border, check our [CSS Gradient Generator](#).

Hey! You found this booklet interesting? Support Converting Colors with the new Membership Option!

The pro membership hides all ads, plus gives you double the colors in the color bucket, and more awesome pro features!

[Learn more, Memberships starting at \\$2.50/m!](#)

**Follow me
on Twitter!**

@ConvertingColor