

Converting Colors

Hex(B36869)

Have a look what the booklet for
Hex(B36869) contains.

Hex(B36869)	3
<i>Conversions</i>	4
<i>Details</i>	6
<i>Harmonies</i>	11
<i>Previews</i>	23
<i>Color Blindness Simulation</i>	26
<i>CSS Examples</i>	29

Color

Hex(B36869)

Conversions

Conversions Part 1

Format	Color
Hex	B36869
RGB	179, 104, 105
RGB Percent	70%, 41%, 41%
CMY	0.2980, 0.5922, 0.5882
CMYK	0.00, 0.42, 0.41, 0.30
HSL	359°, 33%, 55%
HSV	359°, 42%, 70%
XYZ	26.0905, 20.5043, 15.9472
YIQ	126.5390, 44.3790, 16.2110

Conversions

Conversions Part 2

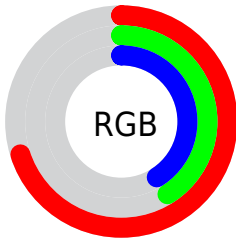
Format	Color
R_{YB}	179, 104, 105
Decimal	11757673
CIE Lab	52.40, 30.11, 12.51
CIE LCh	52, 32.608, 22.563
Yxy	20.5043, 0.4172, 0.3278
Android (android.graphics.Color)	4289947753 (0xFFB36869)
YUV	126.5390, -10.6187, 46.0083
Hunter-Lab	45.2816, 23.6059, 10.8165

Details

The Hex color **B36869** is a dark color, and the websafe version is hex **996666**. A complement of this color would be **68B3B2**, and the grayscale version is **7F7F7F**.

A 20% lighter version of the original color is **ED9C9C**, and **7B373A** is the 20% darker color. If you saturate the color by 10%, you get **B35657**, and if you desaturate by 10%, it is **B37A7B**.

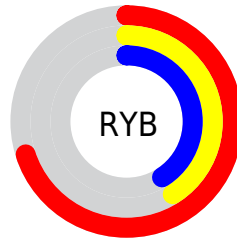
Distribution



Red (70%)

Green (41%)

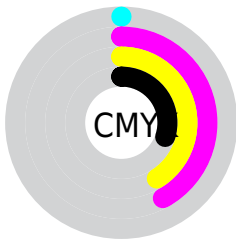
Blue (41%)



Red (70%)

Yellow (41%)

Blue (41%)

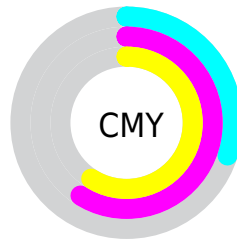


Cyan (0%)

Magenta (42%)

Yellow (41%)

Black (30%)



Cyan (30%)

Magenta (59%)

Yellow (59%)

Brightness & Saturation Gradients

These gradients show how the Hex color B36869 changes by changing the brightness by 10 percent. The first figure shows a shift by +10% for each color and the second figure -10%.

Similar to the brightness gradients but the following saturation gradients show a change of the Hex color B36869 by changing the saturation by 10% instead.

 B36869

 B36869

FFFFFF

 974F51

 ED9C9C

 7B373A

 FFB7B7

 601F24

 FFD3D3

 460510

 FFF0EF

 2F0000

 000000

 B36869

 B36869

 B35657

 B37A7B

 B34446

 B38C8C

 B33234

 B39E9E

 B32022

 B3B0B0

 B30F11

 B3C2C1

 B30002

 B3D3D3

 B3E5E5

 B3F7F6

 B3FFFF

Harmonies

Analogous

The Analogous color harmony consists of three colors that are next to each other on the color wheel.



AE6785



B36869



AA6F52

Triad

The Triadic color harmony groups three colors that are evenly spaced from another and form a triangle on the color wheel.



B36869



59885A



4582B4

Complementary

The Complementary color scheme is a pair of colors which are on the opposite of each other on the color wheel.



B36869



68B3B2

Split Complementary

Split-complementary colors differ from the complementary color scheme. The scheme consists of three colors, the original color and two neighbors of the complement color.



0089A9



B36869



318B75

Square

The Square scheme is like the rectangle color scheme, but the four colors are evenly spaced on the color wheel.



B36869



7A8248



008C92



7678B1

Rectangle

The Rectangle color scheme consists of four colors that form a rectangle on the color wheel.



B36869



9D7648



008C92



3185B2

Sweetspot

The Sweet Spot groups the original color and five complimentary colors.



B36869



E8CACA



B268B3



756363



F5F5F5



757575

Same Dimension

The Same Dimension uses a secret algorithm to generate beautiful new colors.



B36869



E87476



B38C68



595050



990002



1A0000

Inverse Universe

The Inverse Universe completely reimagines the original color for something new.



B36869



E87476



688FB3



595050



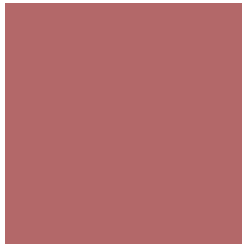
990002



1A0000

Previews

White Background



This preview shows how the Hex color B36869 looks on a white background.

Color Contrast Check

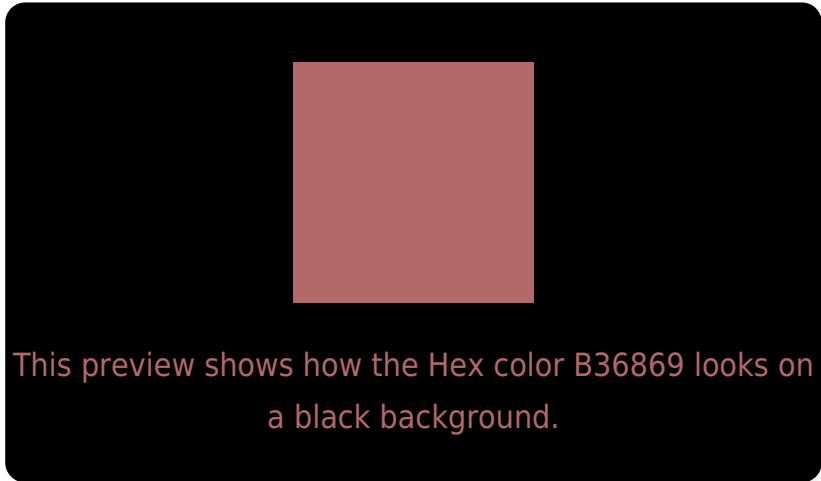
Large Text (above 18pt) WCAG AA ✓ Pass

Any Text WCAG AA × Fail

Large Text (above 18pt) WCAG AAA × Fail

Any Text WCAG AAA × Fail

Black Background



Color Contrast Check

Large Text (above 18pt) WCAG AA ✓ Pass

Any Text WCAG AA ✓ Pass

Large Text (above 18pt) WCAG AAA ✓ Pass

Any Text WCAG AAA × Fail

If you want to check with other color combinations, try the [Color Contrast Checker](#).

Hex B36869 Background



This preview shows how black text looks on a background with the Hex color B36869.

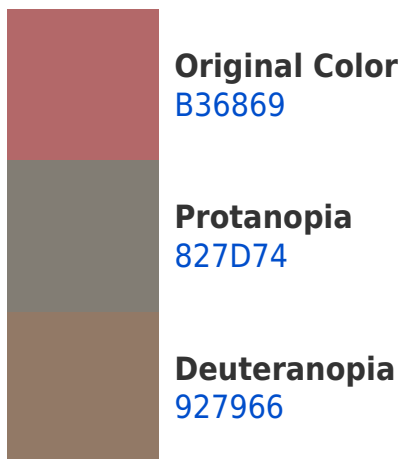



This preview shows how white text looks on a background with the Hex color B36869.

Color Blindness Simulation

Color vision deficiency is a very complex topic, and I could not describe the different causes any better than Wikipedia does, so if you want to learn more, you should check out their [article about color blindness](#).

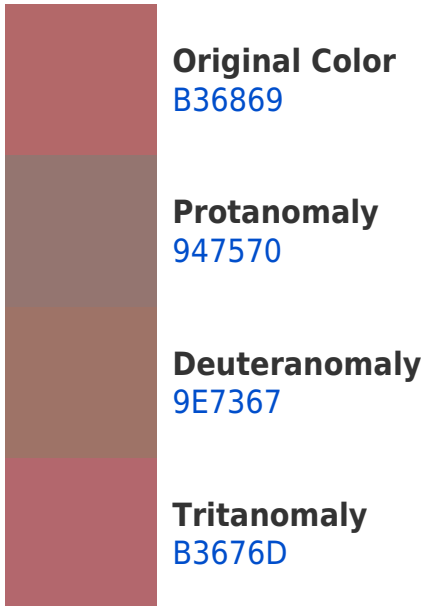
Dichromacy





Tritanopia
B3676F

Trichromacy



Monochromacy



CSS Examples

Text

The CSS property to change the color of the text to Hex B36869 is called "color". The color property can be set on classes, ids or directly on the HTML element.

This example shows how text in the color #B36869 looks like.

```
.text, #text, p{  
    color:#B36869  
}
```

If you want to add a text shadow in that color use the text-shadow property, you can generate a text shadow directly with our [CSS Text Shadow Generator](#).

Here you see how black text with a 4 pixel #B36869 colored shadow looks like.

```
.shadow{ text-shadow: 4px 4px 2px #B36869
}
```

Border

The CSS property to change the border of an element to Hex B36869 is called "border". The border property can be set on classes, ids or directly on the HTML element.

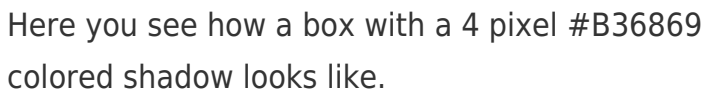
This example shows the color as border, it can be applied via the CSS property "border" or "border-color".

```
.border, #border, table{ border:4px solid
#B36869 }
```

If only the border color should be changed use the property `border-color`.

```
.border{ border-color:#B36869 }
```

If you want to add a box shadow in that color use:



Here you see how a box with a 4 pixel #B36869 colored shadow looks like.

```
.boxshadow{ -moz-box-shadow:4px 4px 4px  
4px #B36869; -webkit-box-shadow:4px 4px  
4px 4px #B36869; box-shadow:4px 4px 4px  
4px #B36869 }
```

Background

The CSS property to change the background color of an element to Hex B36869 is called "background". The background property can be set on classes, ids or directly on the HTML element.

```
.background, #background, body{  
background:#B36869 }
```

If only the background color should be changed can be used:

```
.background{ background-color:#B36869 }
```

This example shows the color as background, it is applied via the CSS property "background".

To optimize and compress your CSS code, you can use our [online CSS compressor and optimizer](#) based on csstidy. If you want to create a linear or radial gradient as background or border, check our [CSS Gradient Generator](#).

Hey! You found this booklet interesting? Support Converting Colors with the new Membership Option!

The pro membership hides all ads, plus gives you double the colors in the color bucket, and more awesome pro features!

[Learn more, Memberships starting at \\$2.50/m!](#)

**Follow me
on Twitter!**

@ConvertingColor