

Converting Colors

Hex(B36F6E)

Have a look what the booklet for
Hex(B36F6E) contains.

Hex(B36F6E)	3
<i>Conversions</i>	4
<i>Details</i>	6
<i>Harmonies</i>	11
<i>Previews</i>	23
<i>Color Blindness Simulation</i>	26
<i>CSS Examples</i>	29

Color

Hex(**B36F6E**)

Conversions

Conversions Part 1

Format	Color
Hex	B36F6E
RGB	179, 111, 110
RGB Percent	70%, 44%, 43%
CMY	0.2980, 0.5647, 0.5686
CMYK	0.00, 0.38, 0.39, 0.30
HSL	1°, 31%, 57%
HSV	1°, 39%, 70%
XYZ	27.0893, 22.0784, 17.5856
YIQ	131.2180, 40.8490, 14.1050

Conversions

Conversions Part 2

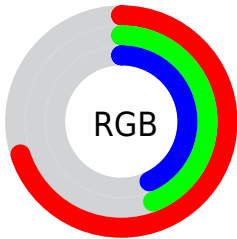
Format	Color
R_{YB}	179, 111, 110
Decimal	11759470
CIE Lab	54.11, 26.85, 11.96
CIE LCh	54, 29.392, 24.016
Yxy	22.0784, 0.4058, 0.3307
Android (android.graphics.Color)	4289949550 (0xFFB36F6E)
YUV	131.2180, -10.4605, 41.9048
Hunter-Lab	46.9876, 20.6805, 10.7014

Details

The Hex color **B36F6E** is a dark color, and the websafe version is hex **996666**. A complement of this color would be **6EB2B3**, and the grayscale version is **838383**.

A 20% lighter version of the original color is **EDA3A2**, and **7C3E3F** is the 20% darker color. If you saturate the color by 10%, you get **B35D5C**, and if you desaturate by 10%, it is **B38180**.

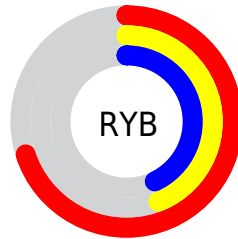
Distribution



Red (70%)

Green (44%)

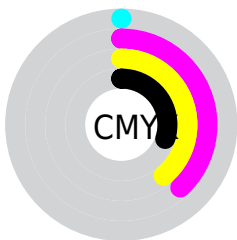
Blue (43%)



Red (70%)

Yellow (44%)

Blue (43%)

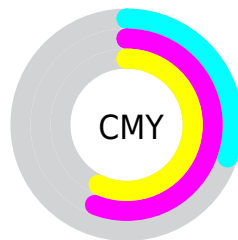


Cyan (0%)

Magenta (38%)

Yellow (39%)

Black (30%)



Cyan (30%)

Magenta (56%)

Yellow (57%)

Brightness & Saturation Gradients

These gradients show how the Hex color B36F6E changes by changing the brightness by 10 percent. The first figure shows a shift by +10% for each color and the second figure -10%.

Similar to the brightness gradients but the following saturation gradients show a change of the Hex color B36F6E by changing the saturation by 10% instead.



B36F6E



B36F6E

FFFFFF



975656



EDA3A2



7C3E3F



FFBFBD



612729



FFDBD8



470F14



FFF8F5



300000



040000



000000



B36F6E



B36F6E



B35D5C



B38180

 B34C4A

 B39292

 B33A38

 B3A4A4

 B32826

 B3B6B6

 B31715

 B3C7C8

 B30503

 B3D9D9

 B30300

 B3EAEB

 B3FCFD

 B3FFFF

Harmonies

Analogous

The Analogous color harmony consists of three colors that are next to each other on the color wheel.



AF6E88



B36F6E



AA7559

Triad

The Triadic color harmony groups three colors that are evenly spaced from another and form a triangle on the color wheel.



B36F6E



608C63



5585B3

Complementary

The Complementary color scheme is a pair of colors which are on the opposite of each other on the color wheel.



B36F6E



6EB2B3

Split Complementary

Split-complementary colors differ from the complementary color scheme. The scheme consists of three colors, the original color and two neighbors of the complement color.



2C8CAA



B36F6E



408F7B

Square

The Square scheme is like the rectangle color scheme, but the four colors are evenly spaced on the color wheel.



B36F6E



7D8652



228F95



7D7DB0

Rectangle

The Rectangle color scheme consists of four colors that form a rectangle on the color wheel.



B36F6E



9E7B51



228F95



4788B2

Sweetspot

The Sweet Spot groups the original color and five complimentary colors.



B36F6E



E8CDCC



B36EB3



756565



F5F5F5



757575

Same Dimension

The Same Dimension uses a secret algorithm to generate beautiful new colors.



B36F6E



E87F7D



B3916E



595050



990200



1A0000

Inverse Universe

The Inverse Universe completely reimagines the original color for something new.



6EB2B3



7DE7E8



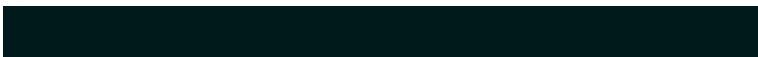
6E91B3



505959



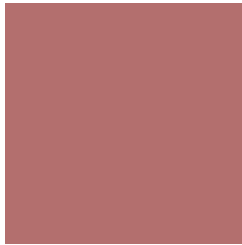
009799



00191A

Previews

White Background



This preview shows how the Hex color B36F6E looks on a white background.

Color Contrast Check

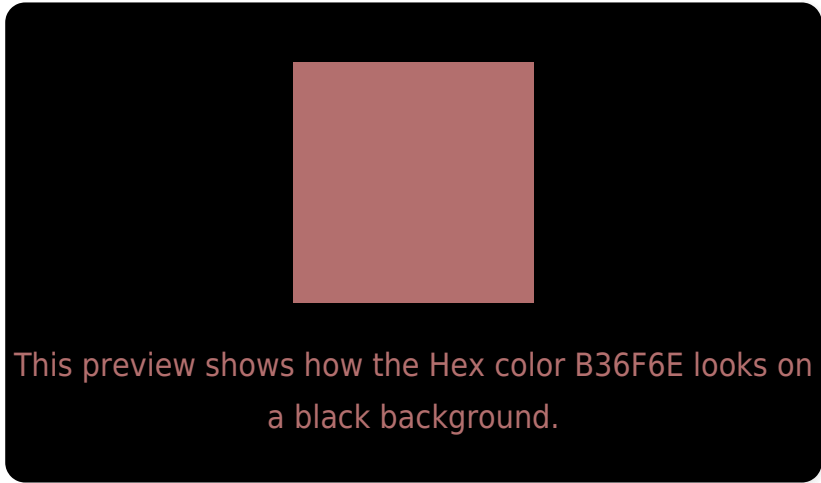
Large Text (above 18pt) WCAG AA ✓ Pass

Any Text WCAG AA × Fail

Large Text (above 18pt) WCAG AAA × Fail

Any Text WCAG AAA × Fail

Black Background



Color Contrast Check

Large Text (above 18pt) WCAG AA ✓ Pass

Any Text WCAG AA ✓ Pass

Large Text (above 18pt) WCAG AAA ✓ Pass

Any Text WCAG AAA × Fail

If you want to check with other color combinations, try the [Color Contrast Checker](#).

Hex B36F6E Background



This preview shows how black text looks on a background with the Hex color B36F6E.



This preview shows how white text looks on a background with the Hex color B36F6E.

Color Blindness Simulation

Color vision deficiency is a very complex topic, and I could not describe the different causes any better than Wikipedia does, so if you want to learn more, you should check out their [article about color blindness](#).

Dichromacy





Tritanopia
B46E76

Trichromacy



Original Color
B36F6E

Protanomaly
977A74

Deuteranomaly
A1786D

Tritanomaly
B46E73

Monochromacy



Original Color
B36F6E

Achromatopsia
838383

Achromatomaly
947C7B

CSS Examples

Text

The CSS property to change the color of the text to Hex B36F6E is called "color". The color property can be set on classes, ids or directly on the HTML element.

This example shows how text in the color #B36F6E looks like.

```
.text, #text, p{  
    color:#B36F6E  
}
```

If you want to add a text shadow in that color use the text-shadow property, you can generate a text shadow directly with our [CSS Text Shadow Generator](#).

Here you see how black text with a 4 pixel #B36F6E colored shadow looks like.

```
.shadow{ text-shadow: 4px 4px 2px #B36F6E
}
```

Border

The CSS property to change the border of an element to Hex B36F6E is called "border". The border property can be set on classes, ids or directly on the HTML element.

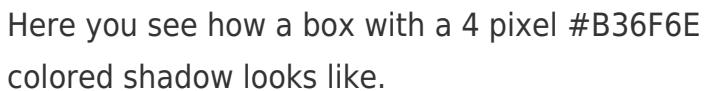
This example shows the color as border, it can be applied via the CSS property "border" or "border-color".

```
.border, #border, table{ border:4px solid
#B36F6E }
```

If only the border color should be changed use the property `border-color`.

```
.border{ border-color:#B36F6E }
```

If you want to add a box shadow in that color use:



Here you see how a box with a 4 pixel #B36F6E colored shadow looks like.

```
.boxshadow{ -moz-box-shadow:4px 4px 4px  
4px #B36F6E; -webkit-box-shadow:4px 4px  
4px 4px #B36F6E; box-shadow:4px 4px 4px  
4px #B36F6E }
```

Background

The CSS property to change the background color of an element to Hex B36F6E is called "background". The background property can be set on classes, ids or directly on the HTML element.

```
.background, #background, body{  
background:#B36F6E }
```

If only the background color should be changed can be used:

```
.background{ background-color:#B36F6E }
```

This example shows the color as background, it is applied via the CSS property "background".

To optimize and compress your CSS code, you can use our [online CSS compressor and optimizer](#) based on csstidy. If you want to create a linear or radial gradient as background or border, check our [CSS Gradient Generator](#).

Hey! You found this booklet interesting? Support Converting Colors with the new Membership Option!

The pro membership hides all ads, plus gives you double the colors in the color bucket, and more awesome pro features!

[Learn more, Memberships starting at \\$2.50/m!](#)

**Follow me
on Twitter!**

@ConvertingColor