

Converting Colors

Hex(B37980)

Have a look what the booklet for
Hex(B37980) contains.

Hex(B37980)	3
<i>Conversions</i>	4
<i>Details</i>	6
<i>Harmonies</i>	11
<i>Previews</i>	23
<i>Color Blindness Simulation</i>	26
<i>CSS Examples</i>	29

Color

Hex(B37980)

Conversions

Conversions Part 1

Format	Color
Hex	B37980
RGB	179, 121, 128
RGB Percent	70%, 47%, 50%
CMY	0.2980, 0.5255, 0.4980
CMYK	0.00, 0.32, 0.28, 0.30
HSL	353°, 28%, 59%
HSV	353°, 32%, 70%
XYZ	29.3241, 24.8170, 23.6667
YIQ	139.1400, 32.3210, 14.4730

Conversions

Conversions Part 2

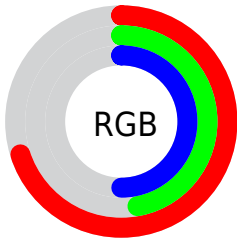
Format	Color
RYB	179, 121, 128
Decimal	11762048
CIELab	56.90, 23.65, 5.43
CIELCh	57, 24.263, 12.939
Yxy	24.8170, 0.3769, 0.3190
Android (android.graphics.Color)	4289952128 (0xFFB37980)
YUV	139.1400, -5.4920, 34.9572
Hunter-Lab	49.8166, 17.8931, 6.7044

Details

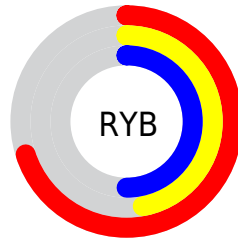
The Hex color **B37980** is a dark color, and the websafe version is hex **996666**. A complement of this color would be **79B3AC**, and the grayscale version is **8B8B8B**.

A 20% lighter version of the original color is **ECAEB5**, and **7D484F** is the 20% darker color. If you saturate the color by 10%, you get **B36770**, and if you desaturate by 10%, it is **B38B90**.

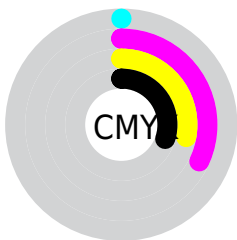
Distribution



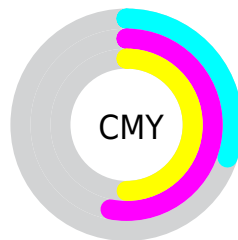
- Red (70%)
- Green (47%)
- Blue (50%)



- Red (70%)
- Yellow (47%)
- Blue (50%)



- Cyan (0%)
- Magenta (32%)
- Yellow (28%)
- Black (30%)



- Cyan (30%)
- Magenta (53%)
- Yellow (50%)

Brightness & Saturation Gradients

These gradients show how the Hex color B37980 changes by changing the brightness by 10 percent. The first figure shows a shift by +10% for each color and the second figure -10%.

Similar to the brightness gradients but the following saturation gradients show a change of the Hex color B37980 by changing the saturation by 10% instead.

 B37980

 B37980

FFFFFF

 986067

 ECAEB5

 7D484F

 FFC9D0

 633038

 FFE6EC

 491A23

 31030D

 160000

 000000

 B37980

 B37980

 B36770

 B38B90

 B35561

 B39D9F

 B34351

 B3AFAF

 B33141

 B3C1BF

 B32031

 B3D3CF

 B30E22

 B3E4DE

 B30016

 B3F6EE

 B3FFFE

 B3FFFF

Harmonies

Analogous

The Analogous color harmony consists of three colors that are next to each other on the color wheel.



AB7A95



B37980



B07D6D

Triad

The Triadic color harmony groups three colors that are evenly spaced from another and form a triangle on the color wheel.



B37980



779069



5C8EB0

Complementary

The Complementary color scheme is a pair of colors which are on the opposite of each other on the color wheel.



B37980



79B3AC

Split Complementary

Split-complementary colors differ from the complementary color scheme. The scheme consists of three colors, the original color and two neighbors of the complement color.



4893A5



B37980



5E937B

Square

The Square scheme is like the rectangle color scheme, but the four colors are evenly spaced on the color wheel.



B37980



8E8A5F



4B9491



7B87B1

Rectangle

The Rectangle color scheme consists of four colors that form a rectangle on the color wheel.



B37980



A88164



4B9491



5490AE

Sweetspot

The Sweet Spot groups the original color and five complimentary colors.



B37980



E8D1D4



AB79B3



756769



F5F5F5



757575

Same Dimension

The Same Dimension uses a secret algorithm to generate beautiful new colors.



B37980



E88E98



B38E79



595051



990012



1A0003

Inverse Universe

The Inverse Universe completely reimagines the original color for something new.



B37980



E88E98



799EB3



595051



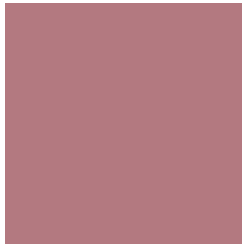
990012



1A0003

Previews

White Background



This preview shows how the Hex color B37980 looks on a white background.

Color Contrast Check

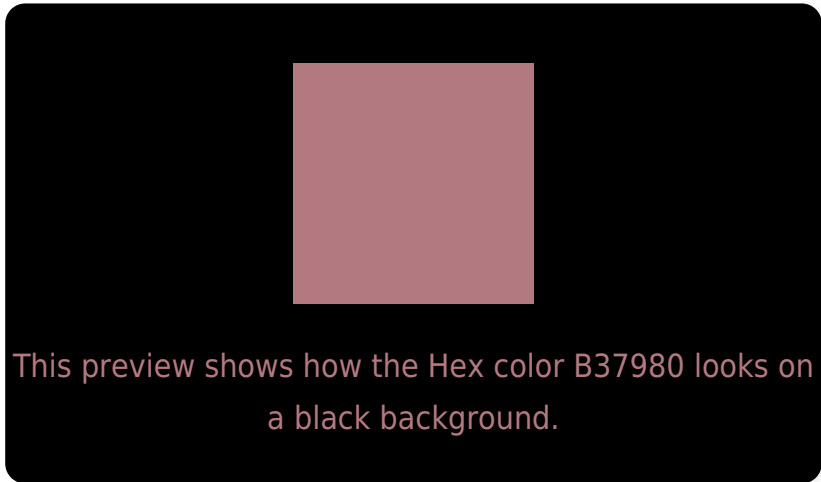
Large Text (above 18pt) WCAG AA ✓ Pass

Any Text WCAG AA ✗ Fail

Large Text (above 18pt) WCAG AAA ✗ Fail

Any Text WCAG AAA ✗ Fail

Black Background



Color Contrast Check

Large Text (above 18pt) WCAG AA ✓ Pass

Any Text WCAG AA ✓ Pass

Large Text (above 18pt) WCAG AAA ✓ Pass

Any Text WCAG AAA × Fail

If you want to check with other color combinations, try the [Color Contrast Checker](#).

Hex B37980 Background



This preview shows how black text looks on a background with the Hex color B37980.

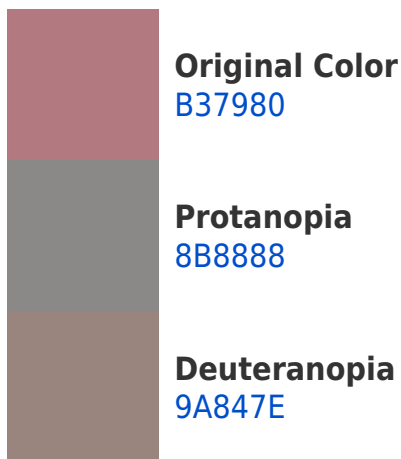


This preview shows how white text looks on a background with the Hex color B37980.

Color Blindness Simulation

Color vision deficiency is a very complex topic, and I could not describe the different causes any better than Wikipedia does, so if you want to learn more, you should check out their [article about color blindness](#).

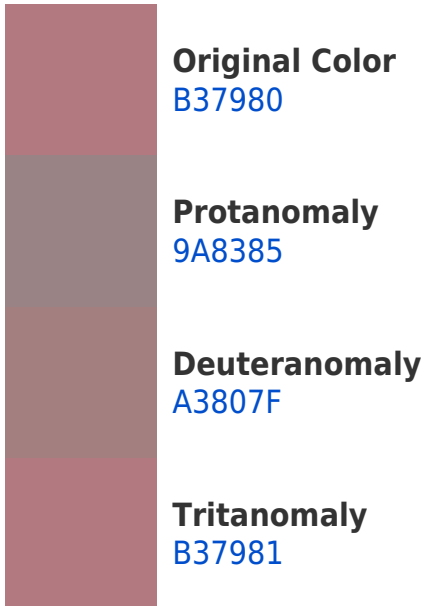
Dichromacy



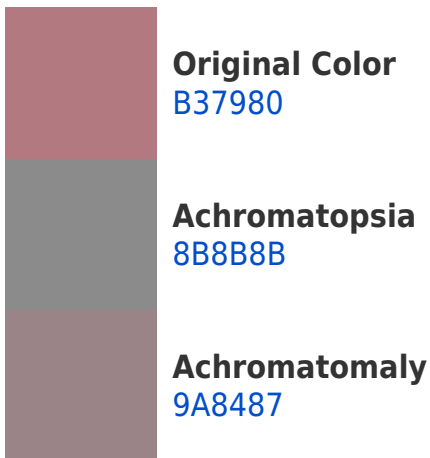


Tritanopia
B37982

Trichromacy



Monochromacy



CSS Examples

Text

The CSS property to change the color of the text to Hex B37980 is called "color". The color property can be set on classes, ids or directly on the HTML element.

This example shows how text in the color #B37980 looks like.

```
.text, #text, p{  
    color:#B37980  
}
```

If you want to add a text shadow in that color use the text-shadow property, you can generate a text shadow directly with our [CSS Text Shadow Generator](#).

Here you see how black text with a 4 pixel #B37980 colored shadow looks like.

```
.shadow{ text-shadow: 4px 4px 2px #B37980
}
```

Border

The CSS property to change the border of an element to Hex B37980 is called "border". The border property can be set on classes, ids or directly on the HTML element.

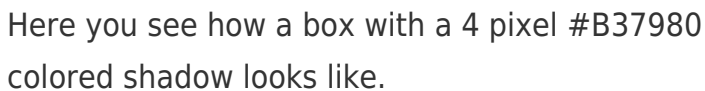
This example shows the color as border, it can be applied via the CSS property "border" or "border-color".

```
.border, #border, table{ border:4px solid
#B37980 }
```

If only the border color should be changed use the property `border-color`.

```
.border{ border-color:#B37980 }
```

If you want to add a box shadow in that color use:



Here you see how a box with a 4 pixel #B37980 colored shadow looks like.

```
.boxshadow{ -moz-box-shadow:4px 4px 4px  
4px #B37980; -webkit-box-shadow:4px 4px  
4px 4px #B37980; box-shadow:4px 4px 4px  
4px #B37980 }
```

Background

The CSS property to change the background color of an element to Hex B37980 is called "background". The background property can be set on classes, ids or directly on the HTML element.

```
.background, #background, body{  
background:#B37980 }
```

If only the background color should be changed can be used:

```
.background{ background-color:#B37980 }
```

This example shows the color as background, it is applied via the CSS property "background".

To optimize and compress your CSS code, you can use our [online CSS compressor and optimizer](#) based on csstidy. If you want to create a linear or radial gradient as background or border, check our [CSS Gradient Generator](#).

Hey! You found this booklet interesting? Support Converting Colors with the new Membership Option!

The pro membership hides all ads, plus gives you double the colors in the color bucket, and more awesome pro features!

[Learn more, Memberships starting at \\$2.50/m!](#)

**Follow me
on Twitter!**

@ConvertingColor