

# Converting Colors

Hex(B37A43)

Have a look what the booklet for  
Hex(B37A43) contains.

<b>Hex(B37A43)</b> .....	3
<b><i>Conversions</i></b> .....	4
<b><i>Details</i></b> .....	6
<b><i>Harmonies</i></b> .....	11
<b><i>Previews</i></b> .....	23
<b><i>Color Blindness Simulation</i></b> .....	26
<b><i>CSS Examples</i></b> .....	29

**Color**

**Hex(B37A43)**

# Conversions

## Conversions Part 1

<b>Format</b>	<b>Color</b>
Hex	B37A43
RGB	179, 122, 67
RGB Percent	70%, 48%, 26%
CMY	0.2980, 0.5216, 0.7373
CMYK	0.00, 0.32, 0.63, 0.30
HSL	29°, 46%, 48%
HSV	29°, 63%, 70%
XYZ	26.5631, 23.9080, 8.5249
YIQ	132.7730, 51.6270, -5.0210

# Conversions

## Conversions Part 2

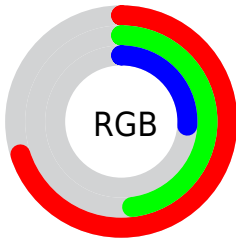
Format	Color
<a href="#">RYB</a>	<a href="#">179, 175, 67</a>
Decimal	<a href="#">11762243</a>
CIELab	<a href="#">56.00, 16.58, 38.57</a>
CIELCh	<a href="#">56, 41.981, 66.744</a>
Yxy	<a href="#">23.9080, 0.4503, 0.4052</a>
Android (android.graphics.Color)	<a href="#">4289952323 (0xFFB37A43)</a>
YUV	<a href="#">132.7730, -32.4261, 40.5411</a>
Hunter-Lab	<a href="#">48.8958, 11.4039, 23.8900</a>

# Details

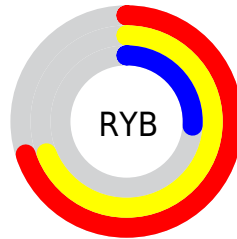
The Hex color **B37A43** is a dark color, and the websafe version is hex **996633**. A complement of this color would be **437CB3**, and the grayscale version is **858585**.

A 20% lighter version of the original color is **EEAF75**, and **7A4913** is the 20% darker color. If you saturate the color by 10%, you get **B37131**, and if you desaturate by 10%, it is **B38355**.

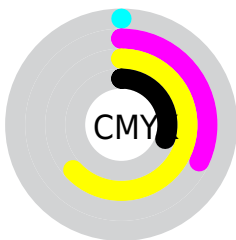
# Distribution



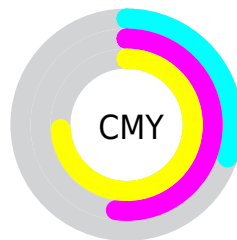
- Red (70%)
- Green (48%)
- Blue (26%)



- Red (70%)
- Yellow (69%)
- Blue (26%)



- Cyan (0%)
- Magenta (32%)
- Yellow (63%)
- Black (30%)



- Cyan (30%)
- Magenta (52%)
- Yellow (74%)

# Brightness & Saturation Gradients

These gradients show how the Hex color B37A43 changes by changing the brightness by 10 percent. The first figure shows a shift by +10% for each color and the second figure -10%.

Similar to the brightness gradients but the following saturation gradients show a change of the Hex color B37A43 by changing the saturation by 10% instead.



 B37A43

 B37A43

FFFFFF

 96612B

 EEA7F5

 7A4913

 FFCA8F

 5F3200

 FFE6AA

 441D00

 FFFFC5

 2B0700

 FFFFE1

 000000

FFFFFFE

 B37A43

 B37A43

 B37131

 B38355

 B3681F

 B38C67

 B35F0D

 B39579

 B35800

 B39E8B

 B3A89C

 B3B1AE

 B3BAC0

 B3C3D2

 B3CCE4

# Harmonies

## Analogous

The Analogous color harmony consists of three colors that are next to each other on the color wheel.



C76D5C



B37A43



94873B

# Triad

The Triadic color harmony groups three colors that are evenly spaced from another and form a triangle on the color wheel.



B37A43



00998E



9479C1

# Complementary

The Complementary color scheme is a pair of colors which are on the opposite of each other on the color wheel.



B37A43



437CB3

# Split Complementary

Split-complementary colors differ from the complementary color scheme. The scheme consists of three colors, the original color and two neighbors of the complement color.



5787CE



B37A43



0097B1

# Square

The Square scheme is like the rectangle color scheme, but the four colors are evenly spaced on the color wheel.



B37A43



3A9768



0092C9



BA6CA4

# Rectangle

The Rectangle color scheme consists of four colors that form a rectangle on the color wheel.



B37A43



7B8E42



0092C9



837EC7



# Sweetspot

The Sweet Spot groups the original color and five complimentary colors.



B37A43



E8D2BC



B3437D



75685A



F5F5F5



757575



# Same Dimension

The Same Dimension uses a secret algorithm to generate beautiful new colors.



B37A43



E88F3A



B3B143



595550



994B00



1A0D00



# Inverse Universe

The Inverse Universe completely reimagines the original color for something new.



437CB3



3A93E8



4345B3



505559



004E99

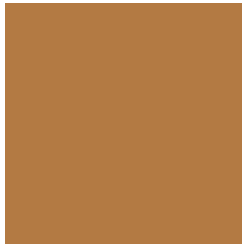


000D1A



# Previews

## White Background



This preview shows how the Hex color B37A43 looks on a white background.

## Color Contrast Check

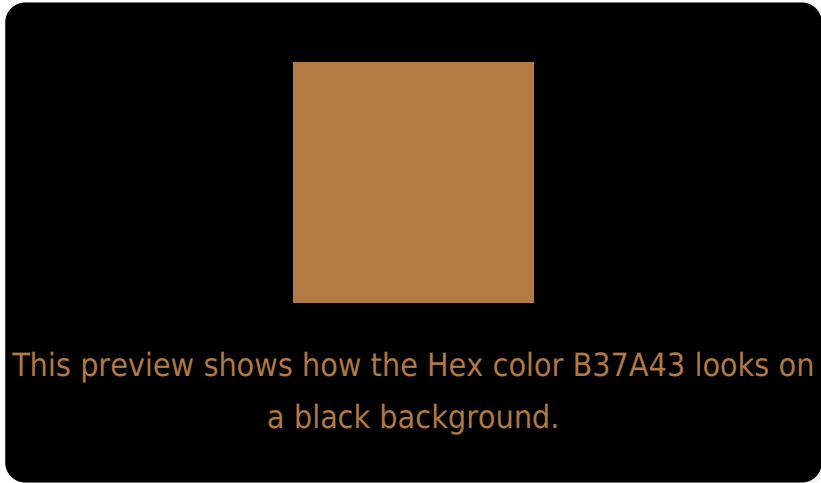
Large Text (above 18pt) WCAG AA ✓ Pass

Any Text WCAG AA × Fail

Large Text (above 18pt) WCAG AAA × Fail

Any Text WCAG AAA × Fail

# Black Background



## Color Contrast Check

Large Text (above 18pt) WCAG AA ✓ Pass

Any Text WCAG AA ✓ Pass

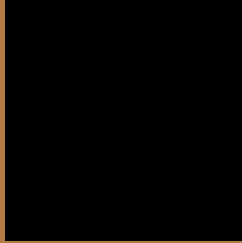
Large Text (above 18pt) WCAG AAA ✓ Pass

Any Text WCAG AAA × Fail

If you want to check with other color combinations, try the [Color Contrast Checker](#).



## Hex B37A43 Background



This preview shows how black text looks on a background with the Hex color B37A43.



This preview shows how white text looks on a background with the Hex color B37A43.

# Color Blindness Simulation

Color vision deficiency is a very complex topic, and I could not describe the different causes any better than Wikipedia does, so if you want to learn more, you should check out their [article about color blindness](#).

## Dichromacy



**Original Color**  
B37A43

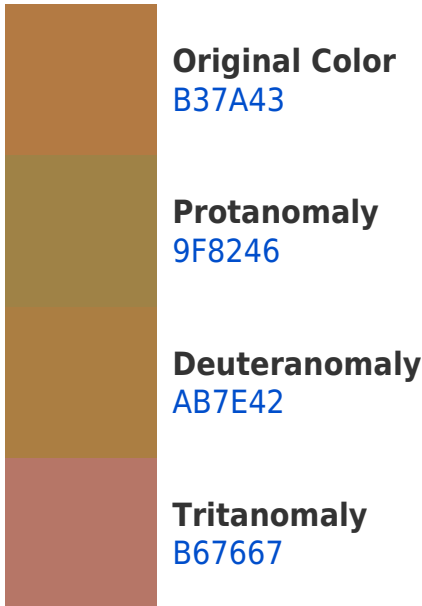
**Protanopia**  
948747

**Deuteranopia**  
A68042

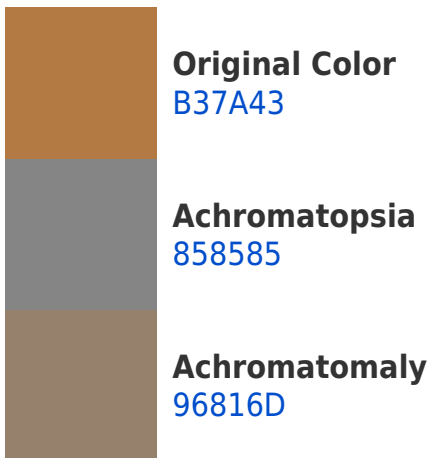


**Tritanopia**  
B7737C

# Trichromacy



# Monochromacy



# CSS Examples

## Text

The CSS property to change the color of the text to Hex B37A43 is called "color". The color property can be set on classes, ids or directly on the HTML element.

This example shows how text in the color #B37A43 looks like.

```
.text, #text, p{  
    color:#B37A43  
}
```

If you want to add a text shadow in that color use the text-shadow property, you can generate a text shadow directly with our [CSS Text Shadow Generator](#).

Here you see how black text with a 4 pixel #B37A43 colored shadow looks like.

```
.shadow{ text-shadow: 4px 4px 2px #B37A43
}
```

## Border

The CSS property to change the border of an element to Hex B37A43 is called "border". The border property can be set on classes, ids or directly on the HTML element.

This example shows the color as border, it can be applied via the CSS property "border" or "border-color".

```
.border, #border, table{ border:4px solid
#B37A43 }
```

If only the border color should be changed use the property `border-color`.

```
.border{ border-color:#B37A43 }
```

If you want to add a box shadow in that color use:

Here you see how a box with a 4 pixel #B37A43 colored shadow looks like.

```
.boxshadow{ -moz-box-shadow:4px 4px 4px  
4px #B37A43; -webkit-box-shadow:4px 4px  
4px 4px #B37A43; box-shadow:4px 4px 4px  
4px #B37A43 }
```

# Background

The CSS property to change the background color of an element to Hex B37A43 is called "background". The background property can be set on classes, ids or directly on the HTML element.

```
.background, #background, body{  
background:#B37A43 }
```

If only the background color should be changed can be used:

```
.background{ background-color:#B37A43 }
```

This example shows the color as background, it is applied via the CSS property "background".

To optimize and compress your CSS code, you can use our [online CSS compressor and optimizer](#) based on csstidy. If you want to create a linear or radial gradient as background or border, check our [CSS Gradient Generator](#).



Hey! You found this booklet interesting? Support Converting Colors with the new Membership Option!

The pro membership hides all ads, plus gives you double the colors in the color bucket, and more awesome pro features!

**[Learn more, Memberships starting at \\$2.50/m!](#)**

**Follow me  
on Twitter!**

@ConvertingColor