

Converting Colors

Hex(B37A4A)

Have a look what the booklet for
Hex(B37A4A) contains.

Hex(B37A4A)	3
<i>Conversions</i>	4
<i>Details</i>	6
<i>Harmonies</i>	11
<i>Previews</i>	23
<i>Color Blindness Simulation</i>	26
<i>CSS Examples</i>	29

Color

Hex(B37A4A)

Conversions

Conversions Part 1

Format	Color
Hex	B37A4A
RGB	179, 122, 74
RGB Percent	70%, 48%, 29%
CMY	0.2980, 0.5216, 0.7098
CMYK	0.00, 0.32, 0.59, 0.30
HSL	27°, 42%, 50%
HSV	27°, 59%, 70%
XYZ	26.7860, 23.9972, 9.6987
YIQ	133.5710, 49.3800, -2.8440

Conversions

Conversions Part 2

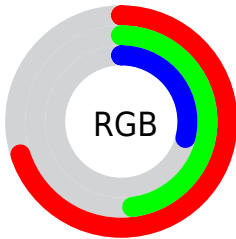
Format	Color
R_{YB}	179, 162, 74
Decimal	11762250
CIE Lab	56.08, 17.10, 34.96
CIE LCh	56, 38.923, 63.936
Yxy	23.9972, 0.4429, 0.3968
Android (android.graphics.Color)	4289952330 (0xFFB37A4A)
YUV	133.5710, -29.3685, 39.8412
Hunter-Lab	48.9869, 11.8764, 22.5523

Details

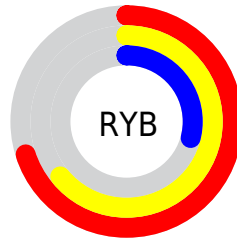
The Hex color **B37A4A** is a dark color, and the websafe version is hex **996633**. A complement of this color would be **4A83B3**, and the grayscale version is **868686**.

A 20% lighter version of the original color is **EEAF7C**, and **7B491B** is the 20% darker color. If you saturate the color by 10%, you get **B37038**, and if you desaturate by 10%, it is **B3845C**.

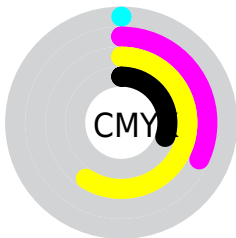
Distribution



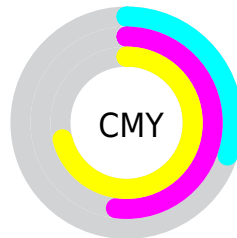
- Red (70%)
- Green (48%)
- Blue (29%)



- Red (70%)
- Yellow (64%)
- Blue (29%)



- Cyan (0%)
- Magenta (32%)
- Yellow (59%)
- Black (30%)



- Cyan (30%)
- Magenta (52%)
- Yellow (71%)

Brightness & Saturation Gradients

These gradients show how the Hex color B37A4A changes by changing the brightness by 10 percent. The first figure shows a shift by +10% for each color and the second figure -10%.

Similar to the brightness gradients but the following saturation gradients show a change of the Hex color B37A4A by changing the saturation by 10% instead.

 B37A4A

 B37A4A

FFFFFF

 976132

 EEA77C

 7B491B

 FFCA96

 603203

 FFE6B1

 451D00

 FFFFCD

 2B0700

 FFFFEE

 010000

 000000

 B37A4A

 B37A4A

 B37038

 B3845C

 B36726

 B38D6E

 B35D14

 B39780

 B35302

 B3A192

 B35200

 B3ABA4

 B3B4B5

 B3BEC7

 B3C8D9

 B3D1EB

Harmonies

Analogous

The Analogous color harmony consists of three colors that are next to each other on the color wheel.



C46F62



B37A4A



978641

Triad

The Triadic color harmony groups three colors that are evenly spaced from another and form a triangle on the color wheel.



B37A4A



00988A



8F7CBF

Complementary

The Complementary color scheme is a pair of colors which are on the opposite of each other on the color wheel.



B37A4A



4A83B3

Split Complementary

Split-complementary colors differ from the complementary color scheme. The scheme consists of three colors, the original color and two neighbors of the complement color.



5788CA



B37A4A



0097AB

Square

The Square scheme is like the rectangle color scheme, but the four colors are evenly spaced on the color wheel.



B37A4A



489568



0092C3



B470A5

Rectangle

The Rectangle color scheme consists of four colors that form a rectangle on the color wheel.



B37A4A



808D47



0092C3



7F80C4

Sweetspot

The Sweet Spot groups the original color and five complimentary colors.



B37A4A



E8D1BE



B34A84



75675B



F5F5F5



757575

Same Dimension

The Same Dimension uses a secret algorithm to generate beautiful new colors.



B37A4A



E89046



B3AE4A



595450



994600



1A0C00

Inverse Universe

The Inverse Universe completely reimagines the original color for something new.



4A83B3



469EE8



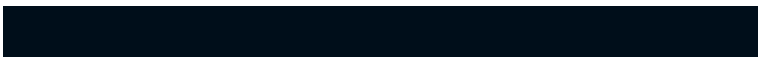
4A4FB3



505559



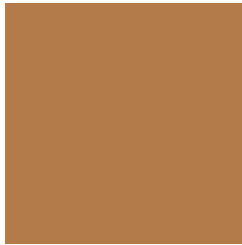
005399



000E1A

Previews

White Background



This preview shows how the Hex color B37A4A looks on a white background.

Color Contrast Check

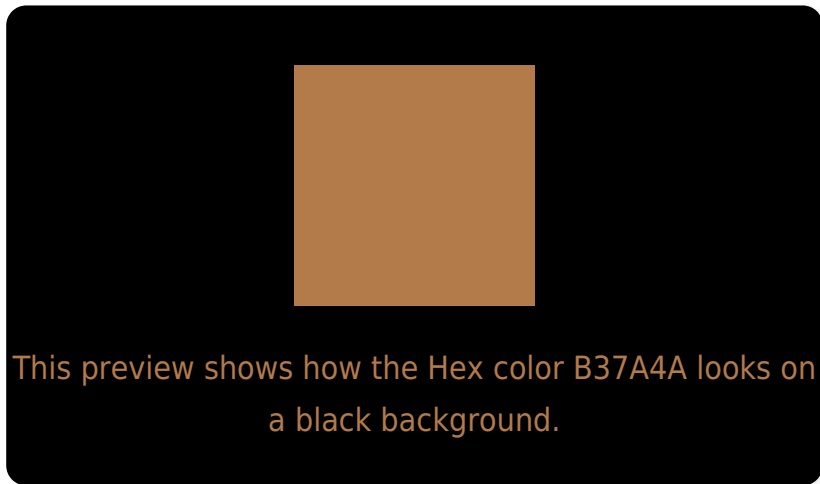
Large Text (above 18pt) WCAG AA ✓ Pass

Any Text WCAG AA × Fail

Large Text (above 18pt) WCAG AAA × Fail

Any Text WCAG AAA × Fail

Black Background



Color Contrast Check

Large Text (above 18pt) WCAG AA ✓ Pass

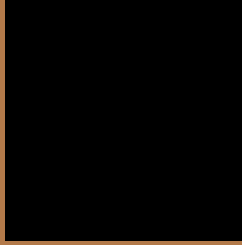
Any Text WCAG AA ✓ Pass

Large Text (above 18pt) WCAG AAA ✓ Pass

Any Text WCAG AAA × Fail

If you want to check with other color combinations, try the [Color Contrast Checker](#).

Hex B37A4A Background



This preview shows how black text looks on a background with the Hex color B37A4A.



This preview shows how white text looks on a background with the Hex color B37A4A.

Color Blindness Simulation

Color vision deficiency is a very complex topic, and I could not describe the different causes any better than Wikipedia does, so if you want to learn more, you should check out their [article about color blindness](#).

Dichromacy



Original Color
B37A4A

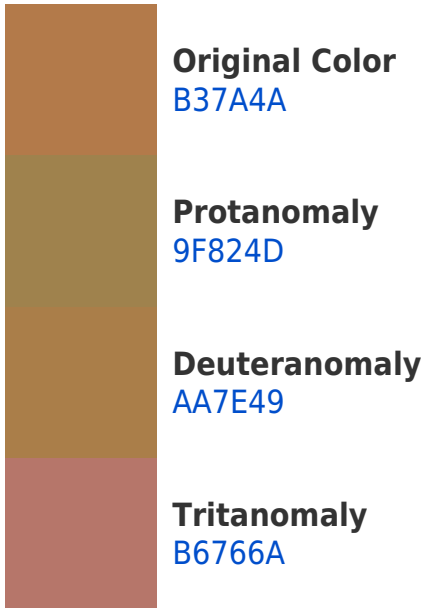
Protanopia
94874F

Deuteranopia
A58049

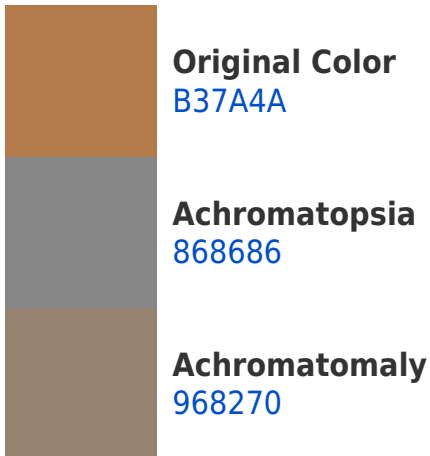


Tritanopia
B7747D

Trichromacy



Monochromacy



CSS Examples

Text

The CSS property to change the color of the text to Hex B37A4A is called "color". The color property can be set on classes, ids or directly on the HTML element.

This example shows how text in the color #B37A4A looks like.

```
.text, #text, p{  
    color:#B37A4A  
}
```

If you want to add a text shadow in that color use the text-shadow property, you can generate a text shadow directly with our [CSS Text Shadow Generator](#).

Here you see how black text with a 4 pixel #B37A4A colored shadow looks like.

```
.shadow{ text-shadow: 4px 4px 2px #B37A4A
}
```

Border

The CSS property to change the border of an element to Hex B37A4A is called "border". The border property can be set on classes, ids or directly on the HTML element.

This example shows the color as border, it can be applied via the CSS property "border" or "border-color".

```
.border, #border, table{ border:4px solid
#B37A4A }
```

If only the border color should be changed use the property `border-color`.

```
.border{ border-color:#B37A4A }
```

If you want to add a box shadow in that color use:

Here you see how a box with a 4 pixel #B37A4A colored shadow looks like.

```
.boxshadow{ -moz-box-shadow:4px 4px 4px  
4px #B37A4A; -webkit-box-shadow:4px 4px  
4px 4px #B37A4A; box-shadow:4px 4px 4px  
4px #B37A4A }
```

Background

The CSS property to change the background color of an element to Hex B37A4A is called "background". The background property can be set on classes, ids or directly on the HTML element.

```
.background, #background, body{  
background:#B37A4A }
```

If only the background color should be changed can be used:

```
.background{ background-color:#B37A4A }
```

This example shows the color as background, it is applied via the CSS property "background".

To optimize and compress your CSS code, you can use our [online CSS compressor and optimizer](#) based on csstidy. If you want to create a linear or radial gradient as background or border, check our [CSS Gradient Generator](#).

Hey! You found this booklet interesting? Support Converting Colors with the new Membership Option!

The pro membership hides all ads, plus gives you double the colors in the color bucket, and more awesome pro features!

[Learn more, Memberships starting at \\$2.50/m!](#)

**Follow me
on Twitter!**

@ConvertingColor