

# Converting Colors

Hex(B37B7E)

Have a look what the booklet for  
Hex(B37B7E) contains.

<b>Hex(B37B7E)</b> .....	3
<i><b>Conversions</b></i> .....	4
<i><b>Details</b></i> .....	6
<i><b>Harmonies</b></i> .....	11
<i><b>Previews</b></i> .....	23
<i><b>Color Blindness Simulation</b></i> .....	26
<i><b>CSS Examples</b></i> .....	29

# Color

Hex(B37B7E)

# Conversions

## Conversions Part 1

<b>Format</b>	<b>Color</b>
Hex	<a href="#">B37B7E</a>
RGB	<a href="#">179, 123, 126</a>
RGB Percent	<a href="#">70%, 48%, 49%</a>
CMY	<a href="#">0.2980, 0.5176, 0.5059</a>
CMYK	<a href="#">0.00, 0.31, 0.30, 0.30</a>
HSL	<a href="#">357°, 27%, 59%</a>
HSV	<a href="#">357°, 31%, 70%</a>
XYZ	<a href="#">29.4393, 25.2560, 23.0619</a>
YIQ	<a href="#">140.0860, 32.4130, 12.8050</a>

# Conversions

## Conversions Part 2

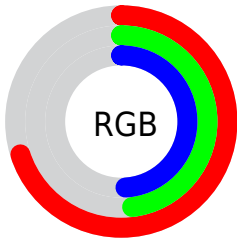
<b>Format</b>	<b>Color</b>
<b>R<sub>YB</sub></b>	179, 123, 126
Decimal	11762558
CIE Lab	57.32, 22.25, 7.20
CIE LCh	57, 23.383, 17.940
Yxy	25.2560, 0.3786, 0.3248
Android (android.graphics.Color)	4289952638 (0xFFB37B7E)
YUV	140.0860, -6.9444, 34.1276
Hunter-Lab	50.2553, 16.6174, 7.9708

# Details

The Hex color **B37B7E** is a dark color, and the websafe version is hex **996666**. A complement of this color would be **7BB3B0**, and the grayscale version is **8C8C8C**.

A 20% lighter version of the original color is **ECB0B3**, and **7D4A4D** is the 20% darker color. If you saturate the color by 10%, you get **B3696D**, and if you desaturate by 10%, it is **B38D8F**.

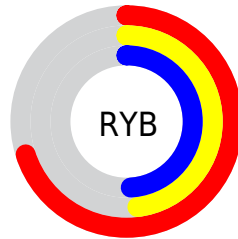
# Distribution



Red (70%)

Green (48%)

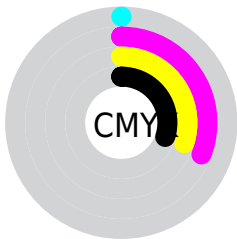
Blue (49%)



Red (70%)

Yellow (48%)

Blue (49%)

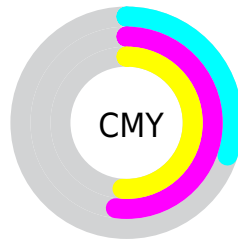


Cyan (0%)

Magenta (31%)

Yellow (30%)

Black (30%)



Cyan (30%)

Magenta (52%)

Yellow (51%)

# Brightness & Saturation Gradients

These gradients show how the Hex color B37B7E changes by changing the brightness by 10 percent. The first figure shows a shift by +10% for each color and the second figure -10%.

Similar to the brightness gradients but the following saturation gradients show a change of the Hex color B37B7E by changing the saturation by 10% instead.



 B37B7E

 B37B7E

FFFFFF

 986265

 ECB0B3

 7D4A4D

 FFCCCE

 633236

 FFE8EA

 491C21

 31060A

 170000

 000000

 B37B7E

 B37B7E

 B3696D

 B38D8F

 B3575C

 B39FA0

 B3454B

 B3B1B1

 B3333A

 B3C3C2

 B32229

 B3D5D3

 B31018

 B3E6E4

 B3000A

 B3F8F5

 B3FFFF

# Harmonies

## Analogous

The Analogous color harmony consists of three colors that are next to each other on the color wheel.



AD7B93



B37B7E



AE7F6C

# Triad

The Triadic color harmony groups three colors that are evenly spaced from another and form a triangle on the color wheel.



B37B7E



74916E



648EB1

# Complementary

The Complementary color scheme is a pair of colors which are on the opposite of each other on the color wheel.



B37B7E



7BB3B0

# Split Complementary

Split-complementary colors differ from the complementary color scheme. The scheme consists of three colors, the original color and two neighbors of the complement color.



4F93A7



B37B7E



5E9480

# Square

The Square scheme is like the rectangle color scheme, but the four colors are evenly spaced on the color wheel.



B37B7E



8C8C63



4D9595



8187B0

# Rectangle

The Rectangle color scheme consists of four colors that form a rectangle on the color wheel.



B37B7E



A58364



4D9595



5C90AF



# Sweetspot

The Sweet Spot groups the original color and five complimentary colors.



B37B7E



E8D3D4



AF7BB3



756869



F5F5F5



757575



# Same Dimension

The Same Dimension uses a secret algorithm to generate beautiful new colors.



B37B7E



E89095



B3937B



595051



990008



1A0001



# Inverse Universe

The Inverse Universe completely reimagines the original color for something new.



B37B7E



E89095



7B9BB3



595051



990008

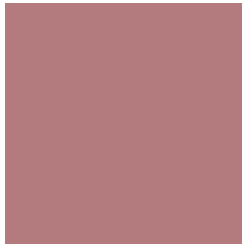


1A0001



# Previews

## White Background



This preview shows how the Hex color B37B7E looks on a white background.

## Color Contrast Check

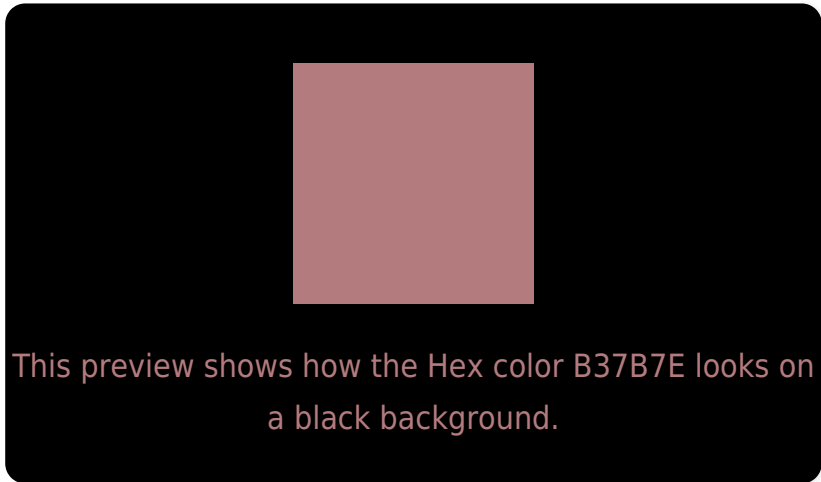
Large Text (above 18pt) WCAG AA ✓ Pass

Any Text WCAG AA ✗ Fail

Large Text (above 18pt) WCAG AAA ✗ Fail

Any Text WCAG AAA ✗ Fail

# Black Background



## Color Contrast Check

Large Text (above 18pt) WCAG AA ✓ Pass

Any Text WCAG AA ✓ Pass

Large Text (above 18pt) WCAG AAA ✓ Pass

Any Text WCAG AAA × Fail

If you want to check with other color combinations, try the [Color Contrast Checker](#).



## Hex B37B7E Background



This preview shows how black text looks on a background with the Hex color B37B7E.




This preview shows how white text looks on a background with the Hex color B37B7E.

# Color Blindness Simulation

Color vision deficiency is a very complex topic, and I could not describe the different causes any better than Wikipedia does, so if you want to learn more, you should check out their [article about color blindness](#).

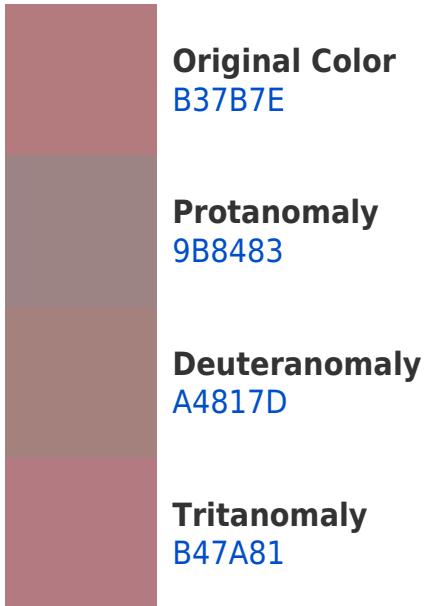
## Dichromacy



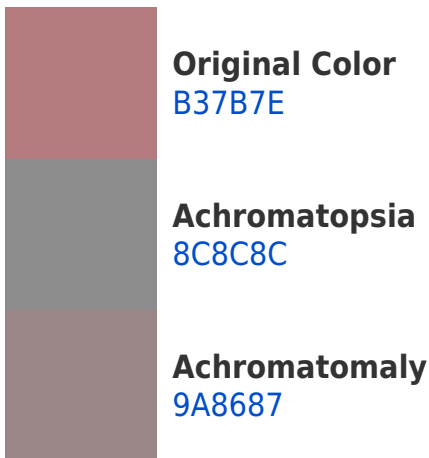


**Tritanopia**  
B47A83

# Trichromacy



# Monochromacy



# CSS Examples

## Text

The CSS property to change the color of the text to Hex B37B7E is called "color". The color property can be set on classes, ids or directly on the HTML element.

This example shows how text in the color #B37B7E looks like.

```
.text, #text, p{  
  color:#B37B7E  
}
```

If you want to add a text shadow in that color use the text-shadow property, you can generate a text shadow directly with our [CSS Text Shadow Generator](#).

Here you see how black text with a 4 pixel #B37B7E colored shadow looks like.

```
.shadow{ text-shadow: 4px 4px 2px #B37B7E
}
```

## Border

The CSS property to change the border of an element to Hex B37B7E is called "border". The border property can be set on classes, ids or directly on the HTML element.

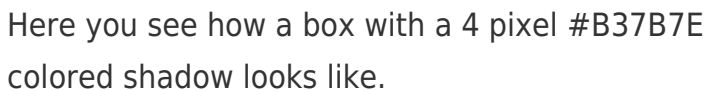
This example shows the color as border, it can be applied via the CSS property "border" or "border-color".

```
.border, #border, table{ border:4px solid
#B37B7E }
```

If only the border color should be changed use the property `border-color`.

```
.border{ border-color:#B37B7E }
```

If you want to add a box shadow in that color use:



Here you see how a box with a 4 pixel `#B37B7E` colored shadow looks like.

```
.boxshadow{ -moz-box-shadow:4px 4px 4px  
4px #B37B7E; -webkit-box-shadow:4px 4px  
4px 4px #B37B7E; box-shadow:4px 4px 4px  
4px #B37B7E }
```

# Background

The CSS property to change the background color of an element to Hex B37B7E is called "background". The background property can be set on classes, ids or directly on the HTML element.

```
.background, #background, body{  
background:#B37B7E }
```

If only the background color should be changed can be used:

```
.background{ background-color:#B37B7E }
```

This example shows the color as background, it is applied via the CSS property "background".

To optimize and compress your CSS code, you can use our [online CSS compressor and optimizer](#) based on csstidy. If you want to create a linear or radial gradient as background or border, check our [CSS Gradient Generator](#).



Hey! You found this booklet interesting? Support Converting Colors with the new Membership Option!

The pro membership hides all ads, plus gives you double the colors in the color bucket, and more awesome pro features!

**[Learn more, Memberships starting at \\$2.50/m!](#)**

**Follow me  
on Twitter!**

@ConvertingColor