

# Converting Colors

Hex(B37E49)

Have a look what the booklet for  
Hex(B37E49) contains.

<b>Hex(B37E49)</b> .....	3
<b><i>Conversions</i></b> .....	4
<b><i>Details</i></b> .....	6
<b><i>Harmonies</i></b> .....	11
<b><i>Previews</i></b> .....	23
<b><i>Color Blindness Simulation</i></b> .....	26
<b><i>CSS Examples</i></b> .....	29

**Color**

**Hex(B37E49)**

# Conversions

## Conversions Part 1

<b>Format</b>	<b>Color</b>
Hex	B37E49
RGB	179, 126, 73
RGB Percent	70%, 49%, 29%
CMY	0.2980, 0.5059, 0.7137
CMYK	0.00, 0.30, 0.59, 0.30
HSL	30°, 42%, 49%
HSV	30°, 59%, 70%
XYZ	27.2539, 24.9865, 9.6898
YIQ	135.8050, 48.6010, -5.2470

# Conversions

## Conversions Part 2

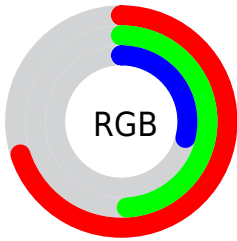
<b>Format</b>	<b>Color</b>
<b>RYB</b>	179, 179, 73
Decimal	11763273
CIELab	57.06, 14.79, 36.68
CIELCh	57, 39.546, 68.042
Yxy	24.9865, 0.4401, 0.4035
Android (android.graphics.Color)	4289953353 (0xFFB37E49)
YUV	135.8050, -30.9629, 37.8820
Hunter-Lab	49.9865, 9.8464, 23.4973

# Details

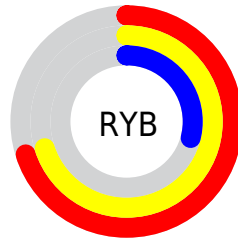
The Hex color **B37E49** is a dark color, and the websafe version is hex **996633**. A complement of this color would be **497EB3**, and the grayscale version is **888888**.

A 20% lighter version of the original color is **EDB37B**, and **7B4D1A** is the 20% darker color. If you saturate the color by 10%, you get **B37537**, and if you desaturate by 10%, it is **B3875B**.

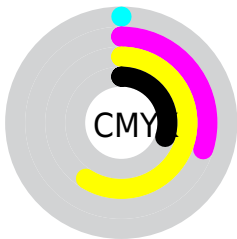
# Distribution



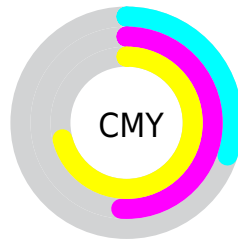
- Red (70%)
- Green (49%)
- Blue (29%)



- Red (70%)
- Yellow (70%)
- Blue (29%)



- Cyan (0%)
- Magenta (30%)
- Yellow (59%)
- Black (30%)



- Cyan (30%)
- Magenta (51%)
- Yellow (71%)

# Brightness & Saturation Gradients

These gradients show how the Hex color B37E49 changes by changing the brightness by 10 percent. The first figure shows a shift by +10% for each color and the second figure -10%.

Similar to the brightness gradients but the following saturation gradients show a change of the Hex color B37E49 by changing the saturation by 10% instead.



 B37E49

 B37E49

FFFFFF

 976531

 EDB37B

 7B4D1A

 FFCE95

 603601

 FFEAB0

 452000

 FFFFCC

 2C0C00

 FFFFEE

 060000

 000000

 B37E49

 B37E49

 B37537

 B3875B

 B36C25

 B3906D

 B36313

 B3997F

 B35A01

 B3A291

 B35A00

 B3ABA3

 B3B4B4

 B3BDC6

 B3C6D8

 B3CFEA

# Harmonies

## Analogous

The Analogous color harmony consists of three colors that are next to each other on the color wheel.



C67260



B37E49



958A43

# Triad

The Triadic color harmony groups three colors that are evenly spaced from another and form a triangle on the color wheel.



B37E49



009B91



987CBF

# Complementary

The Complementary color scheme is a pair of colors which are on the opposite of each other on the color wheel.



B37E49



497EB3

# Split Complementary

Split-complementary colors differ from the complementary color scheme. The scheme consists of three colors, the original color and two neighbors of the complement color.



6289CD



B37E49



0099B2

# Square

The Square scheme is like the rectangle color scheme, but the four colors are evenly spaced on the color wheel.



B37E49



41996E



0093C8



BB71A3

# Rectangle

The Rectangle color scheme consists of four colors that form a rectangle on the color wheel.



B37E49



7D914A



0093C8



8881C6



# Sweetspot

The Sweet Spot groups the original color and five complimentary colors.



B37E49



E8D3BE



B3497E



75685B



F5F5F5



757575



# Same Dimension

The Same Dimension uses a secret algorithm to generate beautiful new colors.



B37E49



E89643



B3B349



595550



994D00



1A0D00



# Inverse Universe

The Inverse Universe completely reimagines the original color for something new.



497EB3



4396E8



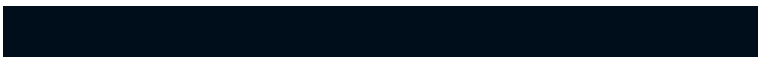
4949B3



505559



004D99

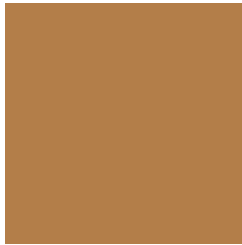


000D1A



# Previews

## White Background



This preview shows how the Hex color B37E49 looks on a white background.

## Color Contrast Check

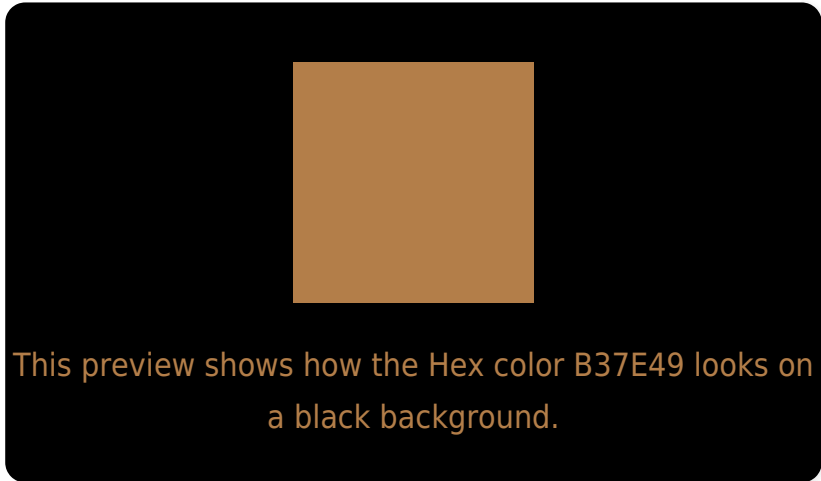
Large Text (above 18pt) WCAG AA ✓ Pass

Any Text WCAG AA × Fail

Large Text (above 18pt) WCAG AAA × Fail

Any Text WCAG AAA × Fail

# Black Background



## Color Contrast Check

Large Text (above 18pt) WCAG AA ✓ Pass

Any Text WCAG AA ✓ Pass

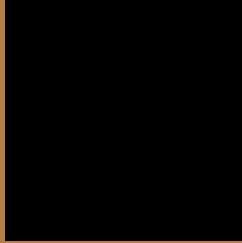
Large Text (above 18pt) WCAG AAA ✓ Pass

Any Text WCAG AAA × Fail

If you want to check with other color combinations, try the [Color Contrast Checker](#).



## Hex B37E49 Background



This preview shows how black text looks on a background with the Hex color B37E49.



This preview shows how white text looks on a background with the Hex color B37E49.

# Color Blindness Simulation

Color vision deficiency is a very complex topic, and I could not describe the different causes any better than Wikipedia does, so if you want to learn more, you should check out their [article about color blindness](#).

## Dichromacy



**Original Color**  
B37E49

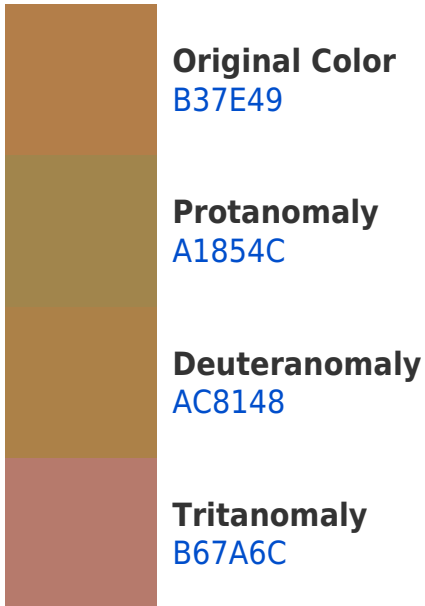
**Protanopia**  
97894D

**Deuteranopia**  
A88348

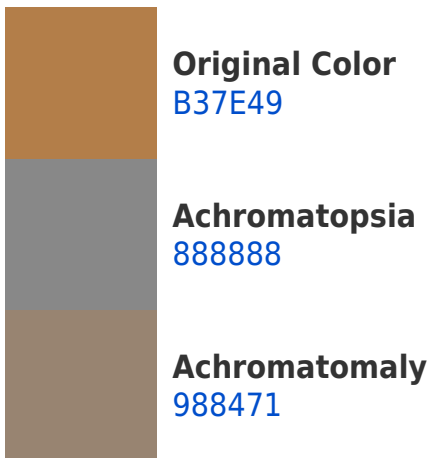


**Tritanopia**  
B77780

# Trichromacy



# Monochromacy



# CSS Examples

## Text

The CSS property to change the color of the text to Hex B37E49 is called "color". The color property can be set on classes, ids or directly on the HTML element.

This example shows how text in the color #B37E49 looks like.

```
.text, #text, p{  
    color:#B37E49  
}
```

If you want to add a text shadow in that color use the text-shadow property, you can generate a text shadow directly with our [CSS Text Shadow Generator](#).

Here you see how black text with a 4 pixel #B37E49 colored shadow looks like.

```
.shadow{ text-shadow: 4px 4px 2px #B37E49
}
```

## Border

The CSS property to change the border of an element to Hex B37E49 is called "border". The border property can be set on classes, ids or directly on the HTML element.

This example shows the color as border, it can be applied via the CSS property "border" or "border-color".

```
.border, #border, table{ border:4px solid
#B37E49 }
```

If only the border color should be changed use the property `border-color`.

```
.border{ border-color:#B37E49 }
```

If you want to add a box shadow in that color use:

Here you see how a box with a 4 pixel #B37E49 colored shadow looks like.

```
.boxshadow{ -moz-box-shadow:4px 4px 4px  
4px #B37E49; -webkit-box-shadow:4px 4px  
4px 4px #B37E49; box-shadow:4px 4px 4px  
4px #B37E49 }
```

# Background

The CSS property to change the background color of an element to Hex B37E49 is called "background". The background property can be set on classes, ids or directly on the HTML element.

```
.background, #background, body{  
background:#B37E49 }
```

If only the background color should be changed can be used:

```
.background{ background-color:#B37E49 }
```

This example shows the color as background, it is applied via the CSS property "background".

To optimize and compress your CSS code, you can use our [online CSS compressor and optimizer](#) based on csstidy. If you want to create a linear or radial gradient as background or border, check our [CSS Gradient Generator](#).



Hey! You found this booklet interesting? Support Converting Colors with the new Membership Option!

The pro membership hides all ads, plus gives you double the colors in the color bucket, and more awesome pro features!

**[Learn more, Memberships starting at \\$2.50/m!](#)**

**Follow me  
on Twitter!**

@ConvertingColor