

# Converting Colors

Hex(B37E88)

Have a look what the booklet for  
Hex(B37E88) contains.

<b>Hex(B37E88)</b> .....	3
<i><b>Conversions</b></i> .....	4
<i><b>Details</b></i> .....	6
<i><b>Harmonies</b></i> .....	11
<i><b>Previews</b></i> .....	23
<i><b>Color Blindness Simulation</b></i> .....	26
<i><b>CSS Examples</b></i> .....	29

**Color**

**Hex(B37E88)**

# Conversions

## Conversions Part 1

<b>Format</b>	<b>Color</b>
Hex	<b>B37E88</b>
RGB	<b>179, 126, 136</b>
RGB Percent	<b>70%, 49%, 53%</b>
CMY	<b>0.2980, 0.5059, 0.4667</b>
CMYK	<b>0.00, 0.30, 0.24, 0.30</b>
HSL	<b>349°, 26%, 60%</b>
HSV	<b>349°, 30%, 70%</b>
XYZ	<b>30.4952, 26.2830, 26.7584</b>
YIQ	<b>142.9870, 28.3780, 14.3460</b>

# Conversions

## Conversions Part 2

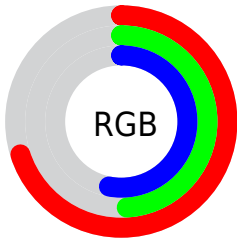
<b>Format</b>	<b>Color</b>
<b>R<sub>YB</sub></b>	179, 126, 136
Decimal	11763336
CIE <sub>Lab</sub>	58.30, 22.02, 2.84
CIE <sub>LCh</sub>	58, 22.199, 7.342
Yxy	26.2830, 0.3651, 0.3146
Android (android.graphics.Color)	4289953416 (0xFFB37E88)
YUV	142.9870, -3.4446, 31.5834
Hunter-Lab	51.2669, 16.4603, 4.9409

# Details

The Hex color **B37E88** is a dark color, and the websafe version is hex **CC9999**. A complement of this color would be **7EB3A9**, and the grayscale version is **8F8F8F**.

A 20% lighter version of the original color is **ECB3BD**, and **7D4C56** is the 20% darker color. If you saturate the color by 10%, you get **B36C79**, and if you desaturate by 10%, it is **B39097**.

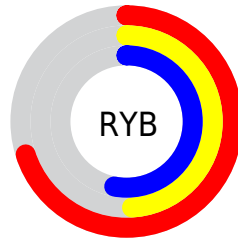
# Distribution



Red (70%)

Green (49%)

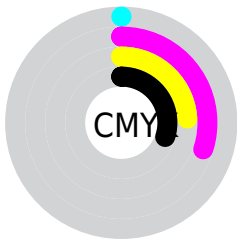
Blue (53%)



Red (70%)

Yellow (49%)

Blue (53%)

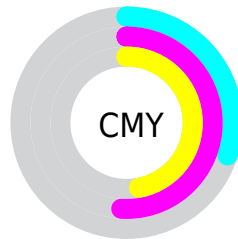


Cyan (0%)

Magenta (30%)

Yellow (24%)

Black (30%)



Cyan (30%)

Magenta (51%)

Yellow (47%)

# Brightness & Saturation Gradients

These gradients show how the Hex color B37E88 changes by changing the brightness by 10 percent. The first figure shows a shift by +10% for each color and the second figure -10%.

Similar to the brightness gradients but the following saturation gradients show a change of the Hex color B37E88 by changing the saturation by 10% instead.





B37E88



B37E88

FFFFFF



98656F



ECB3BD



7D4C56



FFCFD9



63353F



FFEBF5



4A1F29



320815



1C0001



000000



B37E88



B37E88



B36C79



B39097

 B35A6B

 B3A2A5

 B3485C

 B3B4B4

 B3364E

 B3C6C2

 B3253F

 B3D8D1

 B31331

 B3E9DF

 B30122

 B3FBEE

 B30022

 B3FFFC

 B3FFFF

# Harmonies

## Analogous

The Analogous color harmony consists of three colors that are next to each other on the color wheel.



A9809C



B37E88



B28075

# Triad

The Triadic color harmony groups three colors that are evenly spaced from another and form a triangle on the color wheel.



B37E88



80926D



6192AF

# Complementary

The Complementary color scheme is a pair of colors which are on the opposite of each other on the color wheel.



B37E88



7EB3A9

# Split Complementary

Split-complementary colors differ from the complementary color scheme. The scheme consists of three colors, the original color and two neighbors of the complement color.



5396A3



B37E88



6A967D

# Square

The Square scheme is like the rectangle color scheme, but the four colors are evenly spaced on the color wheel.



B37E88



968C66



589790



7B8CB2

# Rectangle

The Rectangle color scheme consists of four colors that form a rectangle on the color wheel.



B37E88



AC846C



589790



5A94AC



# Sweetspot

The Sweet Spot groups the original color and five complimentary colors.



B37E88



E8D3D7



A87EB3



75686B



F5F5F5



757575



# Same Dimension

The Same Dimension uses a secret algorithm to generate beautiful new colors.



B37E88



E895A4



B38E7E



595052



99001D



1A0005



# Inverse Universe

The Inverse Universe completely reimagines the original color for something new.



B37E88



E895A4



7EA3B3



595052



99001D

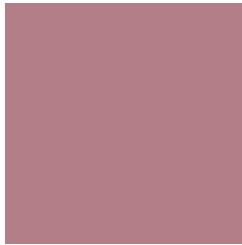


1A0005



# Previews

## White Background



This preview shows how the Hex color B37E88 looks on a white background.

## Color Contrast Check

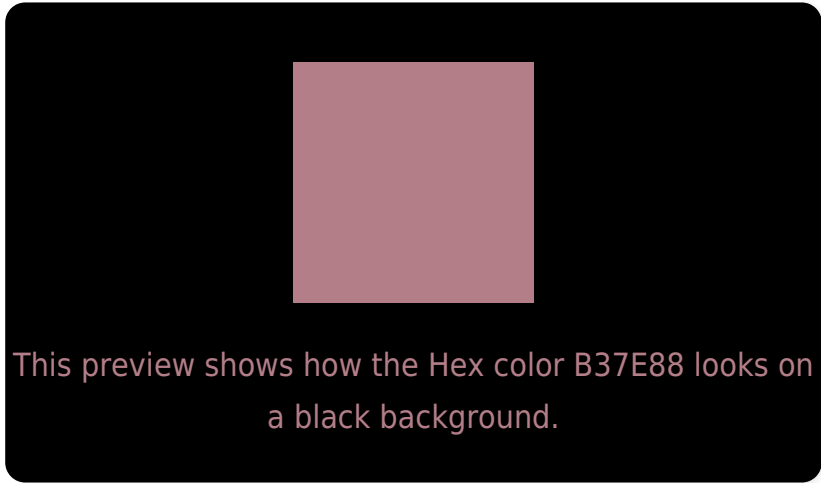
Large Text (above 18pt) WCAG AA ✓ Pass

Any Text WCAG AA ✗ Fail

Large Text (above 18pt) WCAG AAA ✗ Fail

Any Text WCAG AAA ✗ Fail

# Black Background



## Color Contrast Check

Large Text (above 18pt) WCAG AA ✓ Pass

Any Text WCAG AA ✓ Pass

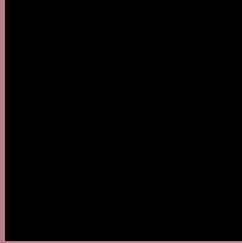
Large Text (above 18pt) WCAG AAA ✓ Pass

Any Text WCAG AAA × Fail

If you want to check with other color combinations, try the [Color Contrast Checker](#).



## Hex B37E88 Background



This preview shows how black text looks on a background with the Hex color B37E88.



This preview shows how white text looks on a background with the Hex color B37E88.

# Color Blindness Simulation

Color vision deficiency is a very complex topic, and I could not describe the different causes any better than Wikipedia does, so if you want to learn more, you should check out their [article about color blindness](#).

## Dichromacy





**Tritanopia**  
B37E88

# Trichromacy



**Original Color**  
B37E88

**Protanomaly**  
9B878D

**Deuteranomaly**  
A48487

**Tritanomaly**  
B37E88

# Monochromacy



**Original Color**  
B37E88

**Achromatopsia**  
8F8F8F

**Achromatomaly**  
9C898C

# CSS Examples

## Text

The CSS property to change the color of the text to Hex B37E88 is called "color". The color property can be set on classes, ids or directly on the HTML element.

This example shows how text in the color #B37E88 looks like.

```
.text, #text, p{  
    color:#B37E88  
}
```

If you want to add a text shadow in that color use the text-shadow property, you can generate a text shadow directly with our [CSS Text Shadow Generator](#).

Here you see how black text with a 4 pixel #B37E88 colored shadow looks like.

```
.shadow{ text-shadow: 4px 4px 2px #B37E88
}
```

## Border

The CSS property to change the border of an element to Hex B37E88 is called "border". The border property can be set on classes, ids or directly on the HTML element.

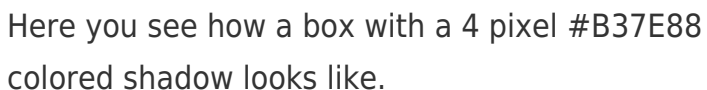
This example shows the color as border, it can be applied via the CSS property "border" or "border-color".

```
.border, #border, table{ border:4px solid
#B37E88 }
```

If only the border color should be changed use the property `border-color`.

```
.border{ border-color:#B37E88 }
```

If you want to add a box shadow in that color use:



Here you see how a box with a 4 pixel `#B37E88` colored shadow looks like.

```
.boxshadow{ -moz-box-shadow:4px 4px 4px  
4px #B37E88; -webkit-box-shadow:4px 4px  
4px 4px #B37E88; box-shadow:4px 4px 4px  
4px #B37E88 }
```

# Background

The CSS property to change the background color of an element to Hex B37E88 is called "background". The background property can be set on classes, ids or directly on the HTML element.

```
.background, #background, body{  
background:#B37E88 }
```

If only the background color should be changed can be used:

```
.background{ background-color:#B37E88 }
```

This example shows the color as background, it is applied via the CSS property "background".

To optimize and compress your CSS code, you can use our [online CSS compressor and optimizer](#) based on csstidy. If you want to create a linear or radial gradient as background or border, check our [CSS Gradient Generator](#).



Hey! You found this booklet interesting? Support Converting Colors with the new Membership Option!

The pro membership hides all ads, plus gives you double the colors in the color bucket, and more awesome pro features!

**[Learn more, Memberships starting at \\$2.50/m!](#)**

**Follow me  
on Twitter!**

@ConvertingColor