

Converting Colors

Hex(B38080)

Have a look what the booklet for
Hex(B38080) contains.

| | |
|--|----|
| Hex(B38080) | 3 |
| <i>Conversions</i> | 4 |
| <i>Details</i> | 6 |
| <i>Harmonies</i> | 11 |
| <i>Previews</i> | 23 |
| <i>Color Blindness Simulation</i> | 26 |
| <i>CSS Examples</i> | 29 |

Color

Hex(B38080)

Conversions

Conversions Part 1

| Format | Color |
|---------------|----------------------------|
| Hex | B38080 |
| RGB | 179, 128, 128 |
| RGB Percent | 70%, 50%, 50% |
| CMY | 0.2980, 0.4980, 0.4980 |
| CMYK | 0.00, 0.28, 0.28, 0.30 |
| HSL | 0°, 25%, 60% |
| HSV | 0°, 28%, 70% |
| XYZ | 30.2059, 26.5806, 23.9606 |
| YIQ | 143.2490, 30.3960, 10.8120 |

Conversions

Conversions Part 2

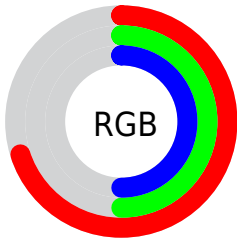
| Format | Color |
|-------------------------------------|--|
| RYB | 179, 128, 128 |
| Decimal | 11763840 |
| CIELab | 58.58, 19.73, 7.85 |
| CIElCh | 59, 21.230, 21.691 |
| Yxy | 26.5806, 0.3741, 0.3292 |
| Android (android.graphics.Color) | 4289953920 (0xFFB38080) |
| YUV | 143.2490, -7.5178, 31.3536 |
| Hunter-Lab | 51.5563, 14.3561, 8.5346 |

Details

The Hex color **B38080** is a light color, and the websafe version is hex **CC9999**. A complement of this color would be **80B3B3**, and the grayscale version is **8F8F8F**.

A 20% lighter version of the original color is **ECB5B5**, and **7D4E4F** is the 20% darker color. If you saturate the color by 10%, you get **B36E6E**, and if you desaturate by 10%, it is **B39292**.

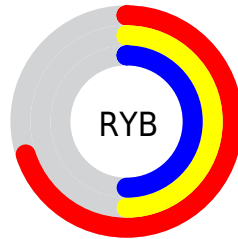
Distribution



Red (70%)

Green (50%)

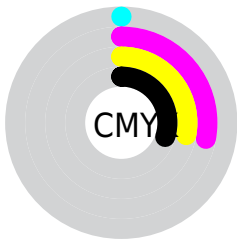
Blue (50%)



Red (70%)

Yellow (50%)

Blue (50%)

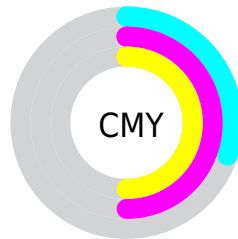


Cyan (0%)

Magenta (28%)

Yellow (28%)

Black (30%)



Cyan (30%)

Magenta (50%)

Yellow (50%)

Brightness & Saturation Gradients

These gradients show how the Hex color B38080 changes by changing the brightness by 10 percent. The first figure shows a shift by +10% for each color and the second figure -10%.

Similar to the brightness gradients but the following saturation gradients show a change of the Hex color B38080 by changing the saturation by 10% instead.

 B38080

 B38080

FFFFFF

 986767

 ECB5B5

 7D4E4F

 FFD1D0

 633738

 FFEDED

 4A2123

 320B0D

 1B0001

 000000

 B38080

 B38080

 B36E6E

 B39292

 B35C5C

 B3A4A4

 B34A4A

 B3B6B6

 B33838

 B3C8C8

 B32727

 B3DADA

 B31515

 B3EBEB

 B30303

 B3FDFD

 B30000

 B3FFFF

Harmonies

Analogous

The Analogous color harmony consists of three colors that are next to each other on the color wheel.



AF8093



B38080



AD8470

Triad

The Triadic color harmony groups three colors that are evenly spaced from another and form a triangle on the color wheel.



B38080



779575



6F90B1

Complementary

The Complementary color scheme is a pair of colors which are on the opposite of each other on the color wheel.



B38080



80B3B3

Split Complementary

Split-complementary colors differ from the complementary color scheme. The scheme consists of three colors, the original color and two neighbors of the complement color.



5B95A9



B38080



639787

Square

The Square scheme is like the rectangle color scheme, but the four colors are evenly spaced on the color wheel.



B38080



8C906A



57979A



898AAF

Rectangle

The Rectangle color scheme consists of four colors that form a rectangle on the color wheel.



B38080



A5886A



57979A



6792B0

Sweetspot

The Sweet Spot groups the original color and five complimentary colors.



B38080



E8D3D3



B380B3



756868



F5F5F5



757575

Same Dimension

The Same Dimension uses a secret algorithm to generate beautiful new colors.



B38080



E89999



B39A80



595050



990000



1A0000

Inverse Universe

The Inverse Universe completely reimagines the original color for something new.



80B3B3



99E8E8



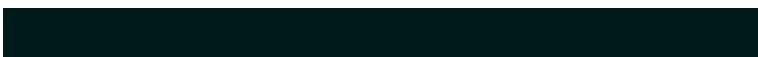
809AB3



505959



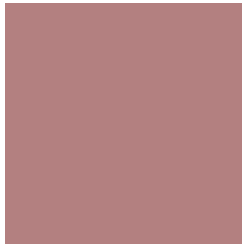
009999



001A1A

Previews

White Background



This preview shows how the Hex color B38080 looks on a white background.

Color Contrast Check

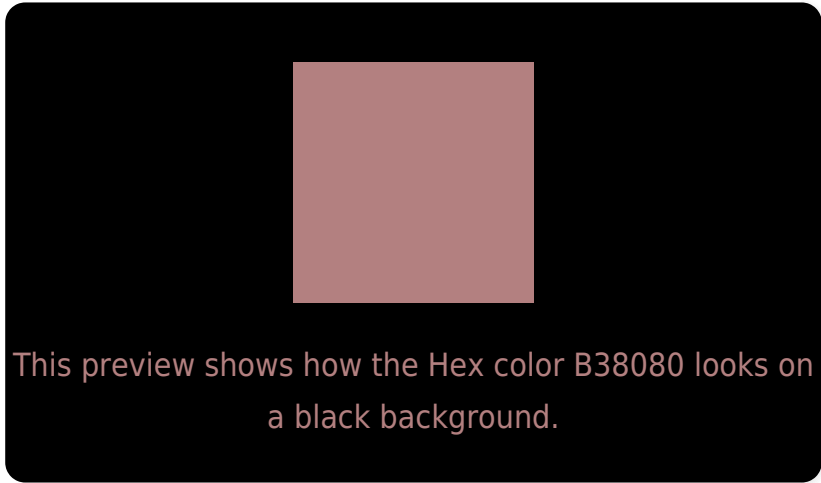
Large Text (above 18pt) WCAG AA ✓ Pass

Any Text WCAG AA ✗ Fail

Large Text (above 18pt) WCAG AAA ✗ Fail

Any Text WCAG AAA ✗ Fail

Black Background



Color Contrast Check

Large Text (above 18pt) WCAG AA ✓ Pass

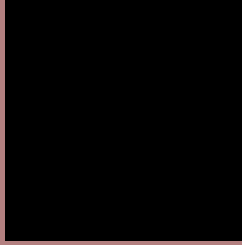
Any Text WCAG AA ✓ Pass

Large Text (above 18pt) WCAG AAA ✓ Pass

Any Text WCAG AAA × Fail

If you want to check with other color combinations, try the [Color Contrast Checker](#).

Hex B38080 Background



This preview shows how black text looks on a background with the Hex color B38080.



This preview shows how white text looks on a background with the Hex color B38080.

Color Blindness Simulation

Color vision deficiency is a very complex topic, and I could not describe the different causes any better than Wikipedia does, so if you want to learn more, you should check out their [article about color blindness](#).

Dichromacy



Original Color
B38080

Protanopia
918D87

Deuteranopia
A0887E



Tritanopia
B47F88

Trichromacy



Original Color
B38080

Protanomaly
9D8884

Deuteranomaly
A7857F

Tritanomaly
B47F85

Monochromacy



Original Color
B38080

Achromatopsia
8F8F8F

Achromatomaly
9C8A8A

CSS Examples

Text

The CSS property to change the color of the text to Hex B38080 is called "color". The color property can be set on classes, ids or directly on the HTML element.

This example shows how text in the color #B38080 looks like.

```
.text, #text, p{  
    color:#B38080  
}
```

If you want to add a text shadow in that color use the text-shadow property, you can generate a text shadow directly with our [CSS Text Shadow Generator](#).

Here you see how black text with a 4 pixel #B38080 colored shadow looks like.

```
.shadow{ text-shadow: 4px 4px 2px #B38080
}
```

Border

The CSS property to change the border of an element to Hex B38080 is called "border". The border property can be set on classes, ids or directly on the HTML element.

This example shows the color as border, it can be applied via the CSS property "border" or "border-color".

```
.border, #border, table{ border:4px solid
#B38080 }
```

If only the border color should be changed use the property `border-color`.

```
.border{ border-color:#B38080 }
```

If you want to add a box shadow in that color use:

Here you see how a box with a 4 pixel #B38080 colored shadow looks like.

```
.boxshadow{ -moz-box-shadow:4px 4px 4px  
4px #B38080; -webkit-box-shadow:4px 4px  
4px 4px #B38080; box-shadow:4px 4px 4px  
4px #B38080 }
```

Background

The CSS property to change the background color of an element to Hex B38080 is called "background". The background property can be set on classes, ids or directly on the HTML element.

```
.background, #background, body{  
background:#B38080 }
```

If only the background color should be changed can be used:

```
.background{ background-color:#B38080 }
```

This example shows the color as background, it is applied via the CSS property "background".

To optimize and compress your CSS code, you can use our [online CSS compressor and optimizer](#) based on csstidy. If you want to create a linear or radial gradient as background or border, check our [CSS Gradient Generator](#).

Hey! You found this booklet interesting? Support Converting Colors with the new Membership Option!

The pro membership hides all ads, plus gives you double the colors in the color bucket, and more awesome pro features!

[Learn more, Memberships starting at \\$2.50/m!](#)

**Follow me
on Twitter!**

@ConvertingColor