

Converting Colors

Hex(B38395)

Have a look what the booklet for
Hex(B38395) contains.

Hex(B38395)	3
<i>Conversions</i>	4
<i>Details</i>	6
<i>Harmonies</i>	11
<i>Previews</i>	23
<i>Color Blindness Simulation</i>	26
<i>CSS Examples</i>	29

Color

Hex(B38395)

Conversions

Conversions Part 1

Format	Color
Hex	B38395
RGB	179, 131, 149
RGB Percent	70%, 51%, 58%
CMY	0.2980, 0.4863, 0.4157
CMYK	0.00, 0.27, 0.17, 0.30
HSL	338°, 24%, 61%
HSV	338°, 27%, 70%
XYZ	32.1315, 27.9862, 32.1421
YIQ	147.4040, 22.8300, 15.7740

Conversions

Conversions Part 2

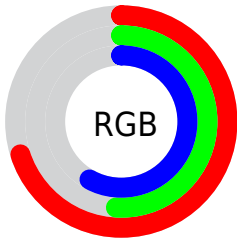
Format	Color
RYB	179, 131, 149
Decimal	11764629
CIELab	59.88, 21.26, -2.35
CIELCh	60, 21.388, 353.699
Yxy	27.9862, 0.3483, 0.3033
Android (android.graphics.Color)	4289954709 (0xFFB38395)
YUV	147.4040, 0.7868, 27.7097
Hunter-Lab	52.9020, 15.8385, 1.0081

Details

The Hex color **B38395** is a light color, and the websafe version is hex **CC9999**. A complement of this color would be **83B3A1**, and the grayscale version is **939393**.

A 20% lighter version of the original color is **EBB8CB**, and **7D5162** is the 20% darker color. If you saturate the color by 10%, you get **B3718A**, and if you desaturate by 10%, it is **B395A0**.

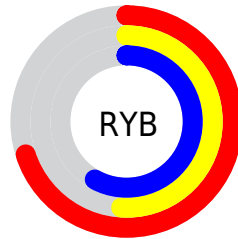
Distribution



Red (70%)

Green (51%)

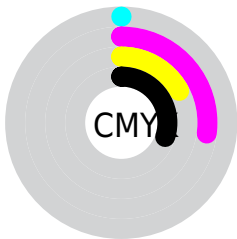
Blue (58%)



Red (70%)

Yellow (51%)

Blue (58%)

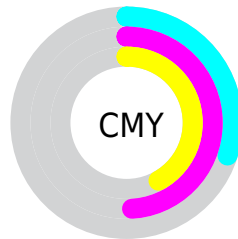


Cyan (0%)

Magenta (27%)

Yellow (17%)

Black (30%)



Cyan (30%)

Magenta (49%)

Yellow (42%)

Brightness & Saturation Gradients

These gradients show how the Hex color B38395 changes by changing the brightness by 10 percent. The first figure shows a shift by +10% for each color and the second figure -10%.

Similar to the brightness gradients but the following saturation gradients show a change of the Hex color B38395 by changing the saturation by 10% instead.

 B38395

 B38395

FFFFFF

 986A7B

 EBB8CB

 7D5162

 FFD4E7

 643A4B

 FFF1FF

 4B2334

 330D1F

 220006

 000000

 B38395

 B38395

 B3718A

 B395A0

 B35F7F

 B3A7AB

 B34D73

 B3B9B7

 B33B68

 B3CBC2

 B32A5D

 B3DCCD

 B31852

 B3EED8

 B30647

 B3FFE3

 B30043

 B3FFEF

 B3FFFA

Harmonies

Analogous

The Analogous color harmony consists of three colors that are next to each other on the color wheel.



A587A7



B38395



B78382

Triad

The Triadic color harmony groups three colors that are evenly spaced from another and form a triangle on the color wheel.



B38395



8E946E



5F98AE

Complementary

The Complementary color scheme is a pair of colors which are on the opposite of each other on the color wheel.



B38395



83B3A1

Split Complementary

Split-complementary colors differ from the complementary color scheme. The scheme consists of three colors, the original color and two neighbors of the complement color.



5A9B9F



B38395



799879

Square

The Square scheme is like the rectangle color scheme, but the four colors are evenly spaced on the color wheel.



B38395



A28E6B



659B8B



7493B5

Rectangle

The Rectangle color scheme consists of four colors that form a rectangle on the color wheel.



B38395



B48677



659B8B



5B99AA

Sweetspot

The Sweet Spot groups the original color and five complimentary colors.



B38395



E8D5DC



A183B3



756A6E



F5F5F5



757575

Same Dimension

The Same Dimension uses a secret algorithm to generate beautiful new colors.



B38395



E89EBA



B38983



595054



990039



1A000A

Inverse Universe

The Inverse Universe completely reimagines the original color for something new.



B38395



E89EBA



83ADB3



595054



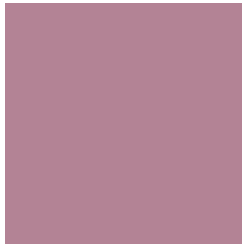
990039



1A000A

Previews

White Background



This preview shows how the Hex color B38395 looks on a white background.

Color Contrast Check

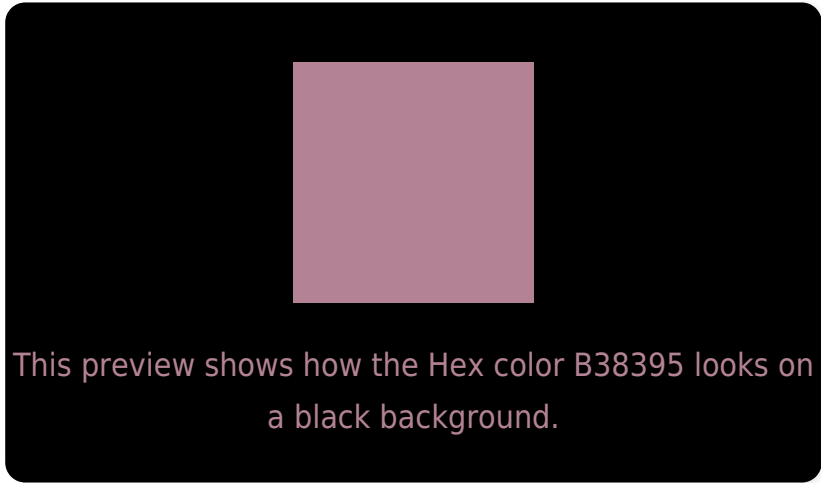
Large Text (above 18pt) WCAG AA ✓ Pass

Any Text WCAG AA ✗ Fail

Large Text (above 18pt) WCAG AAA ✗ Fail

Any Text WCAG AAA ✗ Fail

Black Background



Color Contrast Check

Large Text (above 18pt) WCAG AA ✓ Pass

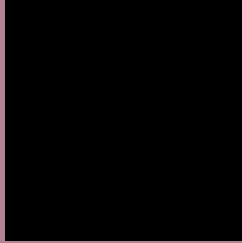
Any Text WCAG AA ✓ Pass

Large Text (above 18pt) WCAG AAA ✓ Pass

Any Text WCAG AAA × Fail

If you want to check with other color combinations, try the [Color Contrast Checker](#).

Hex B38395 Background



This preview shows how black text looks on a background with the Hex color B38395.



This preview shows how white text looks on a background with the Hex color B38395.

Color Blindness Simulation

Color vision deficiency is a very complex topic, and I could not describe the different causes any better than Wikipedia does, so if you want to learn more, you should check out their [article about color blindness](#).

Dichromacy



Original Color
B38395

Protanopia
90909D

Deuteranopia
9D8C93



Tritanopia
B2848E

Trichromacy



Original Color
B38395

Protanomaly
9D8B9A

Deuteranomaly
A58994

Tritanomaly
B28491

Monochromacy



Original Color
B38395

Achromatopsia
939393

Achromatomaly
9F8D94

CSS Examples

Text

The CSS property to change the color of the text to Hex B38395 is called "color". The color property can be set on classes, ids or directly on the HTML element.

This example shows how text in the color #B38395 looks like.

```
.text, #text, p{  
    color:#B38395  
}
```

If you want to add a text shadow in that color use the text-shadow property, you can generate a text shadow directly with our [CSS Text Shadow Generator](#).

Here you see how black text with a 4 pixel #B38395 colored shadow looks like.

```
.shadow{ text-shadow: 4px 4px 2px #B38395
}
```

Border

The CSS property to change the border of an element to Hex B38395 is called "border". The border property can be set on classes, ids or directly on the HTML element.

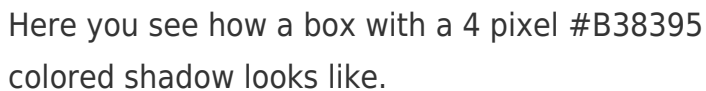
This example shows the color as border, it can be applied via the CSS property "border" or "border-color".

```
.border, #border, table{ border:4px solid
#B38395 }
```

If only the border color should be changed use the property `border-color`.

```
.border{ border-color:#B38395 }
```

If you want to add a box shadow in that color use:



Here you see how a box with a 4 pixel #B38395 colored shadow looks like.

```
.boxshadow{ -moz-box-shadow:4px 4px 4px  
4px #B38395; -webkit-box-shadow:4px 4px  
4px 4px #B38395; box-shadow:4px 4px 4px  
4px #B38395 }
```

Background

The CSS property to change the background color of an element to Hex B38395 is called "background". The background property can be set on classes, ids or directly on the HTML element.

```
.background, #background, body{  
background:#B38395 }
```

If only the background color should be changed can be used:

```
.background{ background-color:#B38395 }
```

This example shows the color as background, it is applied via the CSS property "background".

To optimize and compress your CSS code, you can use our [online CSS compressor and optimizer](#) based on csstidy. If you want to create a linear or radial gradient as background or border, check our [CSS Gradient Generator](#).

Hey! You found this booklet interesting? Support Converting Colors with the new Membership Option!

The pro membership hides all ads, plus gives you double the colors in the color bucket, and more awesome pro features!

[Learn more, Memberships starting at \\$2.50/m!](#)

**Follow me
on Twitter!**

@ConvertingColor