

# Converting Colors

Hex(B3874E)

Have a look what the booklet for  
Hex(B3874E) contains.

<b>Hex(B3874E)</b> .....	3
<i><b>Conversions</b></i> .....	4
<i><b>Details</b></i> .....	6
<i><b>Harmonies</b></i> .....	11
<i><b>Previews</b></i> .....	23
<i><b>Color Blindness Simulation</b></i> .....	26
<i><b>CSS Examples</b></i> .....	29

**Color**

**Hex(B3874E)**

# Conversions

## Conversions Part 1

<b>Format</b>	<b>Color</b>
Hex	B3874E
RGB	179, 135, 78
RGB Percent	70%, 53%, 31%
CMY	0.2980, 0.4706, 0.6941
CMYK	0.00, 0.25, 0.56, 0.30
HSL	34°, 40%, 50%
HSV	34°, 56%, 70%
XYZ	28.6295, 27.4617, 10.9994
YIQ	141.6580, 44.5210, -8.3990

# Conversions

## Conversions Part 2

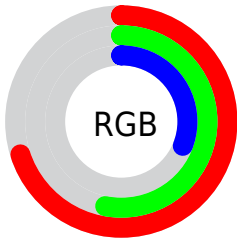
<b>Format</b>	<b>Color</b>
<b>RYB</b>	156, 179, 78
Decimal	11765582
CIELab	59.40, 10.17, 36.85
CIELCh	59, 38.230, 74.571
Yxy	27.4617, 0.4267, 0.4093
Android (android.graphics.Color)	4289955662 (0xFFB3874E)
YUV	141.6580, -31.3834, 32.7489
Hunter-Lab	52.4039, 5.8120, 24.2379

# Details

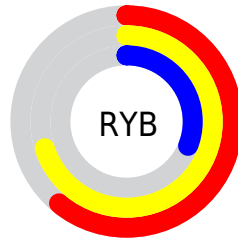
The Hex color **B3874E** is a dark color, and the websafe version is hex **CC9966**. A complement of this color would be **4E7AB3**, and the grayscale version is **8E8E8E**.

A 20% lighter version of the original color is **EDBC80**, and **7B551F** is the 20% darker color. If you saturate the color by 10%, you get **B37F3C**, and if you desaturate by 10%, it is **B38F60**.

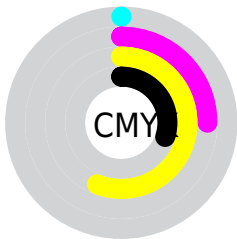
# Distribution



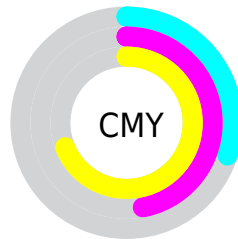
- Red (70%)
- Green (53%)
- Blue (31%)



- Red (61%)
- Yellow (70%)
- Blue (31%)



- Cyan (0%)
- Magenta (25%)
- Yellow (56%)
- Black (30%)



- Cyan (30%)
- Magenta (47%)
- Yellow (69%)

# Brightness & Saturation Gradients

These gradients show how the Hex color B3874E changes by changing the brightness by 10 percent. The first figure shows a shift by +10% for each color and the second figure -10%.

Similar to the brightness gradients but the following saturation gradients show a change of the Hex color B3874E by changing the saturation by 10% instead.



 B3874E

 B3874E

FFFFFF

 976E36

 EDBC80

 7B551F

 FFD89B

 603E06

 FFF4B6

 472800

 FFFFD2

 2D1400

 FFFFEE

 120000

 000000

 B3874E

 B3874E

 B37F3C

 B38F60

 B3772A

 B39772

 B37018

 B39E84

 B36806

 B3A696

 B36500

 B3AEA8

 B3B6B9

 B3BECB

 B3C5DD

 B3CDEF

# Harmonies

## Analogous

The Analogous color harmony consists of three colors that are next to each other on the color wheel.



C87B61



B3874E



94924C

# Triad

The Triadic color harmony groups three colors that are evenly spaced from another and form a triangle on the color wheel.



B3874E



00A19F



A780BF

# Complementary

The Complementary color scheme is a pair of colors which are on the opposite of each other on the color wheel.



B3874E



4E7AB3

# Split Complementary

Split-complementary colors differ from the complementary color scheme. The scheme consists of three colors, the original color and two neighbors of the complement color.



778DD0



B3874E



009EBD

# Square

The Square scheme is like the rectangle color scheme, but the four colors are evenly spaced on the color wheel.



B3874E



409F7C



3297CF



C576A2

# Rectangle

The Rectangle color scheme consists of four colors that form a rectangle on the color wheel.



B3874E



7C9856



3297CF



9984C6



# Sweetspot

The Sweet Spot groups the original color and five complimentary colors.



B3874E



E8D7C1



B34E7B



756B5E



F5F5F5



757575



# Same Dimension

The Same Dimension uses a secret algorithm to generate beautiful new colors.



B3874E



E8A34A



AEB34E



595550



995600



1A0E00



# Inverse Universe

The Inverse Universe completely reimagines the original color for something new.



4E7AB3



4A8FE8



534EB3



505459



004399

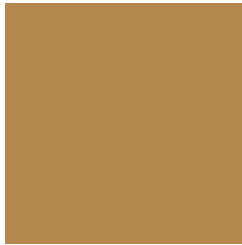


000B1A



# Previews

## White Background



This preview shows how the Hex color B3874E looks on a white background.

## Color Contrast Check

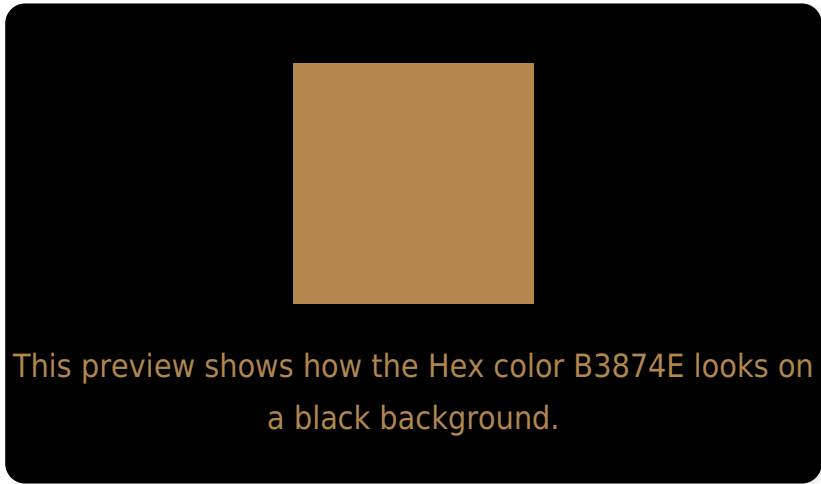
Large Text (above 18pt) WCAG AA ✓ Pass

Any Text WCAG AA × Fail

Large Text (above 18pt) WCAG AAA × Fail

Any Text WCAG AAA × Fail

# Black Background



## Color Contrast Check

Large Text (above 18pt) WCAG AA ✓ Pass

Any Text WCAG AA ✓ Pass

Large Text (above 18pt) WCAG AAA ✓ Pass

Any Text WCAG AAA × Fail

If you want to check with other color combinations, try the [Color Contrast Checker](#).



## Hex B3874E Background



This preview shows how black text looks on a background with the Hex color B3874E.



This preview shows how white text looks on a background with the Hex color B3874E.

# Color Blindness Simulation

Color vision deficiency is a very complex topic, and I could not describe the different causes any better than Wikipedia does, so if you want to learn more, you should check out their [article about color blindness](#).

## Dichromacy



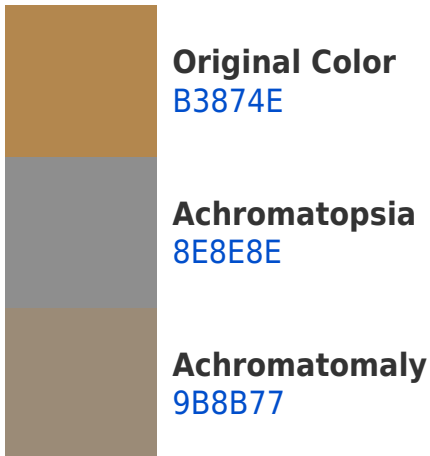


**Tritanopia**  
B8808A

# Trichromacy



# Monochromacy



# CSS Examples

## Text

The CSS property to change the color of the text to Hex B3874E is called "color". The color property can be set on classes, ids or directly on the HTML element.

This example shows how text in the color #B3874E looks like.

```
.text, #text, p{  
    color:#B3874E  
}
```

If you want to add a text shadow in that color use the text-shadow property, you can generate a text shadow directly with our [CSS Text Shadow Generator](#).

Here you see how black text with a 4 pixel #B3874E colored shadow looks like.

```
.shadow{ text-shadow: 4px 4px 2px #B3874E
}
```

## Border

The CSS property to change the border of an element to Hex B3874E is called "border". The border property can be set on classes, ids or directly on the HTML element.

This example shows the color as border, it can be applied via the CSS property "border" or "border-color".

```
.border, #border, table{ border:4px solid
#B3874E }
```

If only the border color should be changed use the property `border-color`.

```
.border{ border-color:#B3874E }
```

If you want to add a box shadow in that color use:

Here you see how a box with a 4 pixel #B3874E colored shadow looks like.

```
.boxshadow{ -moz-box-shadow:4px 4px 4px  
4px #B3874E; -webkit-box-shadow:4px 4px  
4px 4px #B3874E; box-shadow:4px 4px 4px  
4px #B3874E }
```

# Background

The CSS property to change the background color of an element to Hex B3874E is called "background". The background property can be set on classes, ids or directly on the HTML element.

```
.background, #background, body{  
background:#B3874E }
```

If only the background color should be changed can be used:

```
.background{ background-color:#B3874E }
```

This example shows the color as background, it is applied via the CSS property "background".

To optimize and compress your CSS code, you can use our [online CSS compressor and optimizer](#) based on csstidy. If you want to create a linear or radial gradient as background or border, check our [CSS Gradient Generator](#).



Hey! You found this booklet interesting? Support Converting Colors with the new Membership Option!

The pro membership hides all ads, plus gives you double the colors in the color bucket, and more awesome pro features!

**[Learn more, Memberships starting at \\$2.50/m!](#)**

**Follow me  
on Twitter!**

@ConvertingColor