

Converting Colors

Hex(B38C8C)

Have a look what the booklet for
Hex(B38C8C) contains.

Hex(B38C8C)	3
<i>Conversions</i>	4
<i>Details</i>	6
<i>Harmonies</i>	11
<i>Previews</i>	23
<i>Color Blindness Simulation</i>	26
<i>CSS Examples</i>	29

Color

Hex(B38C8C)

Conversions

Conversions Part 1

Format	Color
Hex	B38C8C
RGB	179, 140, 140
RGB Percent	70%, 55%, 55%
CMY	0.2980, 0.4510, 0.4510
CMYK	0.00, 0.22, 0.22, 0.30
HSL	0°, 20%, 63%
HSV	0°, 22%, 70%
XYZ	32.7021, 30.2333, 28.9230
YIQ	151.6610, 23.2440, 8.2680

Conversions

Conversions Part 2

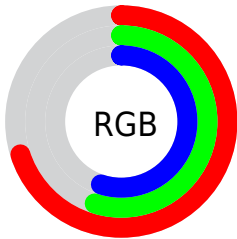
Format	Color
RYB	179, 140, 140
Decimal	11766924
CIELab	61.86, 14.78, 5.67
CIELCh	62, 15.828, 20.980
Yxy	30.2333, 0.3560, 0.3291
Android (android.graphics.Color)	4289957004 (0xFFB38C8C)
YUV	151.6610, -5.7489, 23.9763
Hunter-Lab	54.9848, 9.9390, 7.3018

Details

The Hex color **B38C8C** is a light color, and the websafe version is hex **CC9999**. A complement of this color would be **8CB3B3**, and the grayscale version is **989898**.

A 20% lighter version of the original color is **EBC2C1**, and **7E5A5A** is the 20% darker color. If you saturate the color by 10%, you get **B37A7A**, and if you desaturate by 10%, it is **B39E9E**.

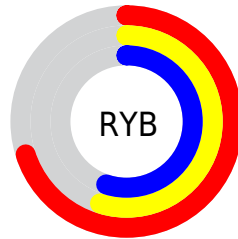
Distribution



Red (70%)

Green (55%)

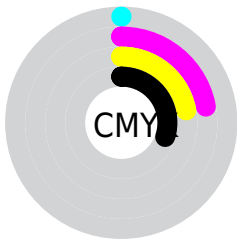
Blue (55%)



Red (70%)

Yellow (55%)

Blue (55%)

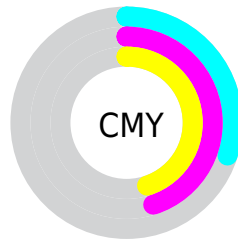


Cyan (0%)

Magenta (22%)

Yellow (22%)

Black (30%)



Cyan (30%)

Magenta (45%)

Yellow (45%)

Brightness & Saturation Gradients

These gradients show how the Hex color B38C8C changes by changing the brightness by 10 percent. The first figure shows a shift by +10% for each color and the second figure -10%.

Similar to the brightness gradients but the following saturation gradients show a change of the Hex color B38C8C by changing the saturation by 10% instead.



B38C8C



B38C8C

FFFFFF



987273



EBC2C1



7E5A5A



FFDEDD



644243



FFFAFA



4B2C2D



341718



210000



000000



B38C8C



B38C8C



B37A7A



B39E9E

 B36868

 B3B0B0

 B35656

 B3C2C2

 B34444

 B3D4D4

 B33333

 B3E6E6

 B32121

 B3F7F7

 B30F0F

 B3FFFF

 B30000

Harmonies

Analogous

The Analogous color harmony consists of three colors that are next to each other on the color wheel.



AF8C9A



B38C8C



AF8F80

Triad

The Triadic color harmony groups three colors that are evenly spaced from another and form a triangle on the color wheel.



B38C8C



869B83



8098B1

Complementary

The Complementary color scheme is a pair of colors which are on the opposite of each other on the color wheel.



B38C8C



8CB3B3

Split Complementary

Split-complementary colors differ from the complementary color scheme. The scheme consists of three colors, the original color and two neighbors of the complement color.



739CAB



B38C8C



789D91

Square

The Square scheme is like the rectangle color scheme, but the four colors are evenly spaced on the color wheel.



B38C8C



96987B



709D9F



9393AF

Rectangle

The Rectangle color scheme consists of four colors that form a rectangle on the color wheel.



B38C8C



A9917B



709D9F



7B99AF

Sweetspot

The Sweet Spot groups the original color and five complimentary colors.



B38C8C



E8D8D8



B38CB3



756C6C



F5F5F5



757575

Same Dimension

The Same Dimension uses a secret algorithm to generate beautiful new colors.



B38C8C



E8ACAC



B3A08C



595050



990000



1A0000

Inverse Universe

The Inverse Universe completely reimagines the original color for something new.



8CB3B3



ACE8E8



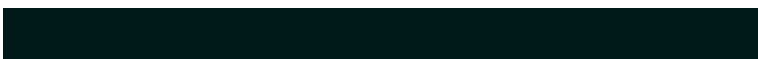
8CA0B3



505959



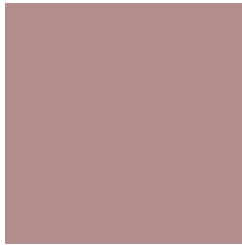
009999



001A1A

Previews

White Background



This preview shows how the Hex color B38C8C looks on a white background.

Color Contrast Check

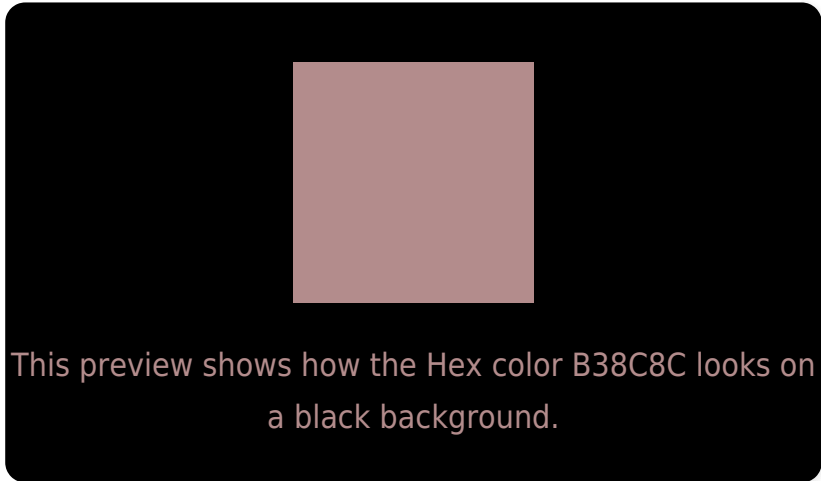
Large Text (above 18pt) WCAG AA × Fail

Any Text WCAG AA × Fail

Large Text (above 18pt) WCAG AAA × Fail

Any Text WCAG AAA × Fail

Black Background



Color Contrast Check

Large Text (above 18pt) WCAG AA ✓ Pass

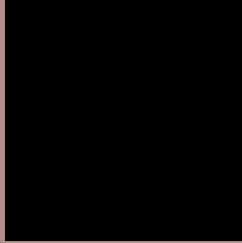
Any Text WCAG AA ✓ Pass

Large Text (above 18pt) WCAG AAA ✓ Pass

Any Text WCAG AAA ✓ Pass

If you want to check with other color combinations, try the [Color Contrast Checker](#).

Hex B38C8C Background



This preview shows how black text looks on a background with the Hex color B38C8C.



This preview shows how white text looks on a background with the Hex color B38C8C.

Color Blindness Simulation

Color vision deficiency is a very complex topic, and I could not describe the different causes any better than Wikipedia does, so if you want to learn more, you should check out their [article about color blindness](#).

Dichromacy





Tritanopia
B48B95

Trichromacy



Original Color
B38C8C

Protanomaly
A2928F

Deuteranomaly
AC8F8B

Tritanomaly
B48B92

Monochromacy



Original Color
B38C8C

Achromatopsia
989898

Achromatomaly
A29494

CSS Examples

Text

The CSS property to change the color of the text to Hex B38C8C is called "color". The color property can be set on classes, ids or directly on the HTML element.

This example shows how text in the color #B38C8C looks like.

```
.text, #text, p{  
    color:#B38C8C  
}
```

If you want to add a text shadow in that color use the text-shadow property, you can generate a text shadow directly with our [CSS Text Shadow Generator](#).

Here you see how black text with a 4 pixel #B38C8C colored shadow looks like.

```
.shadow{ text-shadow: 4px 4px 2px #B38C8C
}
```

Border

The CSS property to change the border of an element to Hex B38C8C is called "border". The border property can be set on classes, ids or directly on the HTML element.

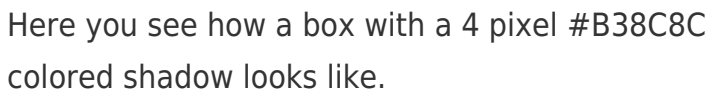
This example shows the color as border, it can be applied via the CSS property "border" or "border-color".

```
.border, #border, table{ border:4px solid
#B38C8C }
```

If only the border color should be changed use the property `border-color`.

```
.border{ border-color:#B38C8C }
```

If you want to add a box shadow in that color use:



Here you see how a box with a 4 pixel #B38C8C colored shadow looks like.

```
.boxshadow{ -moz-box-shadow:4px 4px 4px  
4px #B38C8C; -webkit-box-shadow:4px 4px  
4px 4px #B38C8C; box-shadow:4px 4px 4px  
4px #B38C8C }
```

Background

The CSS property to change the background color of an element to Hex B38C8C is called "background". The background property can be set on classes, ids or directly on the HTML element.

```
.background, #background, body{  
background:#B38C8C }
```

If only the background color should be changed can be used:

```
.background{ background-color:#B38C8C }
```

This example shows the color as background, it is applied via the CSS property "background".

To optimize and compress your CSS code, you can use our [online CSS compressor and optimizer](#) based on csstidy. If you want to create a linear or radial gradient as background or border, check our [CSS Gradient Generator](#).

Hey! You found this booklet interesting? Support Converting Colors with the new Membership Option!

The pro membership hides all ads, plus gives you double the colors in the color bucket, and more awesome pro features!

[Learn more, Memberships starting at \\$2.50/m!](#)

**Follow me
on Twitter!**

@ConvertingColor