

Converting Colors

Hex(B39497)

Have a look what the booklet for
Hex(B39497) contains.

Hex(B39497)	3
<i>Conversions</i>	4
<i>Details</i>	6
<i>Harmonies</i>	11
<i>Previews</i>	23
<i>Color Blindness Simulation</i>	26
<i>CSS Examples</i>	29

Color

Hex(B39497)

Conversions

Conversions Part 1

Format	Color
Hex	B39497
RGB	179, 148, 151
RGB Percent	70%, 58%, 59%
CMY	0.2980, 0.4196, 0.4078
CMYK	0.00, 0.17, 0.16, 0.30
HSL	354°, 17%, 64%
HSV	354°, 17%, 70%
XYZ	34.7662, 32.9979, 33.8150
YIQ	157.6110, 17.5130, 7.5050

Conversions

Conversions Part 2

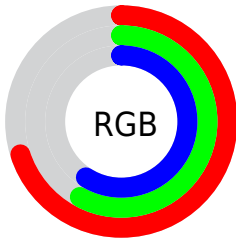
Format	Color
RYB	179, 148, 151
Decimal	11768983
CIELab	64.16, 12.07, 2.77
CIELCh	64, 12.382, 12.907
Yxy	32.9979, 0.3423, 0.3248
Android (android.graphics.Color)	4289959063 (0xFFB39497)
YUV	157.6110, -3.2592, 18.7582
Hunter-Lab	57.4438, 7.5055, 5.3088

Details

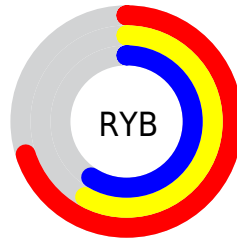
The Hex color **B39497** is a light color, and the websafe version is hex **CC9999**. A complement of this color would be **94B3B0**, and the grayscale version is **9E9E9E**.

A 20% lighter version of the original color is **EBCACD**, and **7E6164** is the 20% darker color. If you saturate the color by 10%, you get **B38287**, and if you desaturate by 10%, it is **B3A6A7**.

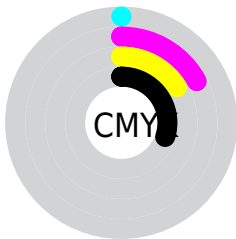
Distribution



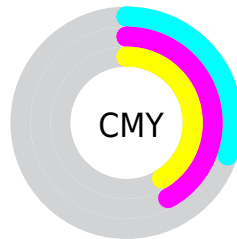
- Red (70%)
- Green (58%)
- Blue (59%)



- Red (70%)
- Yellow (58%)
- Blue (59%)



- Cyan (0%)
- Magenta (17%)
- Yellow (16%)
- Black (30%)



- Cyan (30%)
- Magenta (42%)
- Yellow (41%)

Brightness & Saturation Gradients

These gradients show how the Hex color B39497 changes by changing the brightness by 10 percent. The first figure shows a shift by +10% for each color and the second figure -10%.

Similar to the brightness gradients but the following saturation gradients show a change of the Hex color B39497 by changing the saturation by 10% instead.

 B39497

 B39497

FFFFFF

 987A7D

 EBCACD

 7E6164

 FFE6E9

 65494C

 4C3336

 351D20

 210609

 000000

 B39497

 B39497

 B38287

 B3A6A7

 B37077

 B3B8B7

 B35E66

 B3CAC8

 B34C56

 B3DCD8

 B33B46

 B3EDE8

 B32936

 B3FFF8

 B31726

 B3FFFF

 B30516

 B30011

Harmonies

Analogous

The Analogous color harmony consists of three colors that are next to each other on the color wheel.



AE95A2



B39497



B2968D

Triad

The Triadic color harmony groups three colors that are evenly spaced from another and form a triangle on the color wheel.



B39497



939F8B



889EB0

Complementary

The Complementary color scheme is a pair of colors which are on the opposite of each other on the color wheel.



B39497



94B3B0

Split Complementary

Split-complementary colors differ from the complementary color scheme. The scheme consists of three colors, the original color and two neighbors of the complement color.



80A1AA



B39497



87A295

Square

The Square scheme is like the rectangle color scheme, but the four colors are evenly spaced on the color wheel.



B39497



9F9C86



80A2A0



969BB1

Rectangle

The Rectangle color scheme consists of four colors that form a rectangle on the color wheel.



B39497



AD9788



80A2A0



859FAF

Sweetspot

The Sweet Spot groups the original color and five complimentary colors.



B39497



E8DCDE



B094B3



756E6F



F5F5F5



757575

Same Dimension

The Same Dimension uses a secret algorithm to generate beautiful new colors.



B39497



E8B7BC



B3A094



595051



99000F



1A0002

Inverse Universe

The Inverse Universe completely reimagines the original color for something new.



B39497



E8B7BC



94A7B3



595051



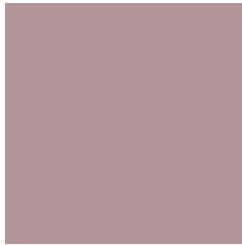
99000F



1A0002

Previews

White Background



This preview shows how the Hex color B39497 looks on a white background.

Color Contrast Check

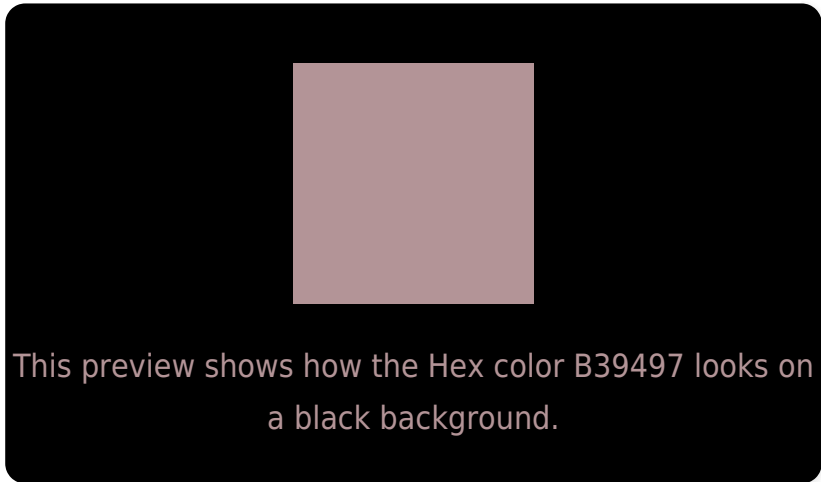
Large Text (above 18pt) WCAG AA × Fail

Any Text WCAG AA × Fail

Large Text (above 18pt) WCAG AAA × Fail

Any Text WCAG AAA × Fail

Black Background



Color Contrast Check

Large Text (above 18pt) WCAG AA ✓ Pass

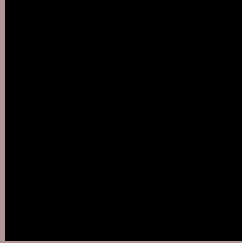
Any Text WCAG AA ✓ Pass

Large Text (above 18pt) WCAG AAA ✓ Pass

Any Text WCAG AAA ✓ Pass

If you want to check with other color combinations, try the [Color Contrast Checker](#).

Hex B39497 Background



This preview shows how black text looks on a background with the Hex color B39497.

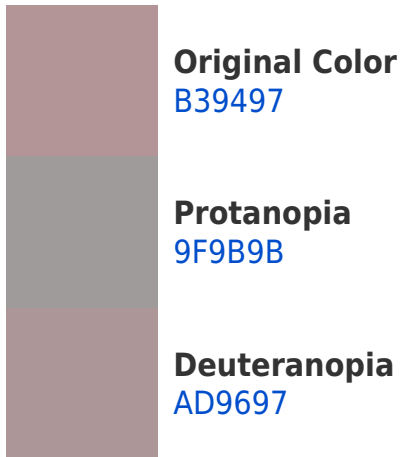



This preview shows how white text looks on a background with the Hex color B39497.

Color Blindness Simulation

Color vision deficiency is a very complex topic, and I could not describe the different causes any better than Wikipedia does, so if you want to learn more, you should check out their [article about color blindness](#).

Dichromacy





Tritanopia
B4939E

Trichromacy



Original Color
B39497

Protanomaly
A6989A

Deuteranomaly
AF9597

Tritanomaly
B4939B

Monochromacy



Original Color
B39497

Achromatopsia
9E9E9E

Achromatomaly
A69A9B

CSS Examples

Text

The CSS property to change the color of the text to Hex B39497 is called "color". The color property can be set on classes, ids or directly on the HTML element.

This example shows how text in the color #B39497 looks like.

```
.text, #text, p{  
  color:#B39497  
}
```

If you want to add a text shadow in that color use the text-shadow property, you can generate a text shadow directly with our [CSS Text Shadow Generator](#).

Here you see how black text with a 4 pixel #B39497 colored shadow looks like.

```
.shadow{ text-shadow: 4px 4px 2px #B39497
}
```

Border

The CSS property to change the border of an element to Hex B39497 is called "border". The border property can be set on classes, ids or directly on the HTML element.

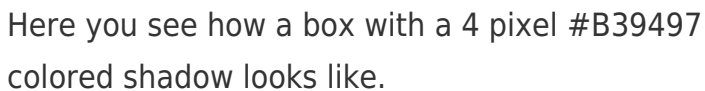
This example shows the color as border, it can be applied via the CSS property "border" or "border-color".

```
.border, #border, table{ border:4px solid
#B39497 }
```

If only the border color should be changed use the property `border-color`.

```
.border{ border-color:#B39497 }
```

If you want to add a box shadow in that color use:



Here you see how a box with a 4 pixel #B39497 colored shadow looks like.

```
.boxshadow{ -moz-box-shadow:4px 4px 4px  
4px #B39497; -webkit-box-shadow:4px 4px  
4px 4px #B39497; box-shadow:4px 4px 4px  
4px #B39497 }
```

Background

The CSS property to change the background color of an element to Hex B39497 is called "background". The background property can be set on classes, ids or directly on the HTML element.

```
.background, #background, body{  
background:#B39497 }
```

If only the background color should be changed can be used:

```
.background{ background-color:#B39497 }
```

This example shows the color as background, it is applied via the CSS property "background".

To optimize and compress your CSS code, you can use our [online CSS compressor and optimizer](#) based on csstidy. If you want to create a linear or radial gradient as background or border, check our [CSS Gradient Generator](#).

Hey! You found this booklet interesting? Support Converting Colors with the new Membership Option!

The pro membership hides all ads, plus gives you double the colors in the color bucket, and more awesome pro features!

[Learn more, Memberships starting at \\$2.50/m!](#)

**Follow me
on Twitter!**

@ConvertingColor