

Converting Colors

Hex(B396A1)

Have a look what the booklet for
Hex(B396A1) contains.

Hex(B396A1)	3
<i>Conversions</i>	4
<i>Details</i>	6
<i>Harmonies</i>	11
<i>Previews</i>	23
<i>Color Blindness Simulation</i>	26
<i>CSS Examples</i>	29

Color

Hex(B396A1)

Conversions

Conversions Part 1

Format	Color
Hex	B396A1
RGB	179, 150, 161
RGB Percent	70%, 59%, 63%
CMY	0.2980, 0.4118, 0.3686
CMYK	0.00, 0.16, 0.10, 0.30
HSL	337°, 16%, 65%
HSV	337°, 16%, 70%
XYZ	35.9298, 33.9696, 38.3813
YIQ	159.9250, 13.7530, 9.5690

Conversions

Conversions Part 2

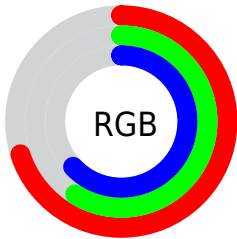
Format	Color
RYB	179, 150, 161
Decimal	11769505
CIELab	64.94, 12.66, -1.73
CIELCh	65, 12.773, 352.208
Yxy	33.9696, 0.3318, 0.3137
Android (android.graphics.Color)	4289959585 (0xFFB396A1)
YUV	159.9250, 0.5300, 16.7288
Hunter-Lab	58.2835, 8.0432, 1.7543

Details

The Hex color **B396A1** is a light color, and the websafe version is hex **CC9999**. A complement of this color would be **96B3A8**, and the grayscale version is **A0A0A0**.

A 20% lighter version of the original color is **EBCCD8**, and **7E636E** is the 20% darker color. If you saturate the color by 10%, you get **B38496**, and if you desaturate by 10%, it is **B3A8AC**.

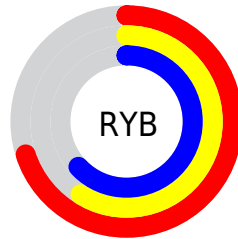
Distribution



Red (70%)

Green (59%)

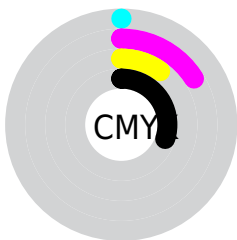
Blue (63%)



Red (70%)

Yellow (59%)

Blue (63%)

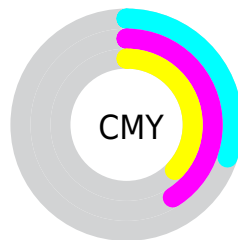


Cyan (0%)

Magenta (16%)

Yellow (10%)

Black (30%)



Cyan (30%)

Magenta (41%)

Yellow (37%)

Brightness & Saturation Gradients

These gradients show how the Hex color B396A1 changes by changing the brightness by 10 percent. The first figure shows a shift by +10% for each color and the second figure -10%.

Similar to the brightness gradients but the following saturation gradients show a change of the Hex color B396A1 by changing the saturation by 10% instead.

 B396A1

 B396A1

FFFFFF

 987C87

 EBCCD8

 7E636E

 FFE8F4

 654B55

 4D343E

 351F28

 210814

 000000

 B396A1

 B396A1

 B38496

 B3A8AC

 B3728B

 B3BAB7

 B36080

 B3CCC2

 B34E75

 B3DECD

 B33D69

 B3F0D9

 B32B5E

 B3FFE4

 B31953

 B3FFEF

 B30748

 B3FFFA

 B30044

 B3FFFF

Harmonies

Analogous

The Analogous color harmony consists of three colors that are next to each other on the color wheel.



AA98AC



B396A1



B69695

Triad

The Triadic color harmony groups three colors that are evenly spaced from another and form a triangle on the color wheel.



B396A1



9E9F88



83A3AF

Complementary

The Complementary color scheme is a pair of colors which are on the opposite of each other on the color wheel.



B396A1



96B3A8

Split Complementary

Split-complementary colors differ from the complementary color scheme. The scheme consists of three colors, the original color and two neighbors of the complement color.



80A4A6



B396A1



90A28F

Square

The Square scheme is like the rectangle color scheme, but the four colors are evenly spaced on the color wheel.



B396A1



AA9C87



86A49A



8E9FB4

Rectangle

The Rectangle color scheme consists of four colors that form a rectangle on the color wheel.



B396A1



B4978F



86A49A



81A3AC

Sweetspot

The Sweet Spot groups the original color and five complimentary colors.



B396A1



E8DCE1



A896B3



756E71



F5F5F5



757575

Same Dimension

The Same Dimension uses a secret algorithm to generate beautiful new colors.



B396A1



E8BCCD



B39996



595054



99003A



1A000A

Inverse Universe

The Inverse Universe completely reimagines the original color for something new.



B396A1



E8BCCD



96B0B3



595054



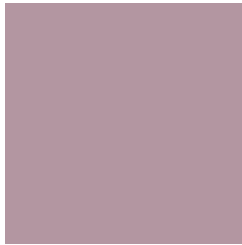
99003A



1A000A

Previews

White Background



This preview shows how the Hex color B396A1 looks on a white background.

Color Contrast Check

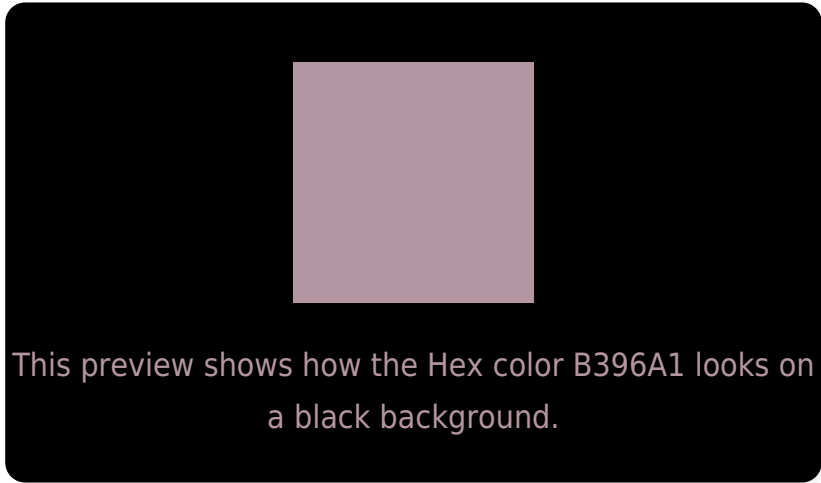
Large Text (above 18pt) WCAG AA × Fail

Any Text WCAG AA × Fail

Large Text (above 18pt) WCAG AAA × Fail

Any Text WCAG AAA × Fail

Black Background



Color Contrast Check

Large Text (above 18pt) WCAG AA ✓ Pass

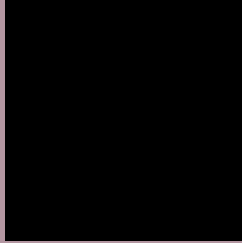
Any Text WCAG AA ✓ Pass

Large Text (above 18pt) WCAG AAA ✓ Pass

Any Text WCAG AAA ✓ Pass

If you want to check with other color combinations, try the [Color Contrast Checker](#).

Hex B396A1 Background



This preview shows how black text looks on a background with the Hex color B396A1.

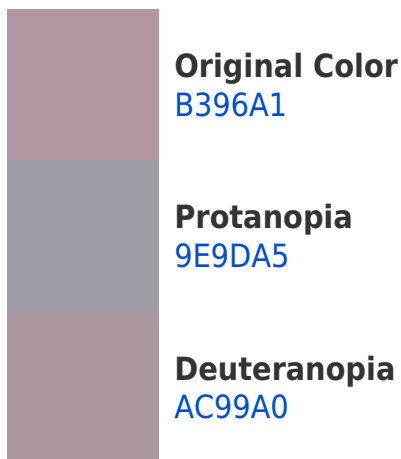


This preview shows how white text looks on a background with the Hex color B396A1.

Color Blindness Simulation

Color vision deficiency is a very complex topic, and I could not describe the different causes any better than Wikipedia does, so if you want to learn more, you should check out their [article about color blindness](#).

Dichromacy





Tritanopia
B396A2

Trichromacy



Original Color
B396A1

Protanomaly
A69AA4

Deuteranomaly
AF98A0

Tritanomaly
B396A2

Monochromacy



Original Color
B396A1

Achromatopsia
A0A0A0

Achromatomaly
A79CA0

CSS Examples

Text

The CSS property to change the color of the text to Hex B396A1 is called "color". The color property can be set on classes, ids or directly on the HTML element.

This example shows how text in the color #B396A1 looks like.

```
.text, #text, p{  
    color:#B396A1  
}
```

If you want to add a text shadow in that color use the text-shadow property, you can generate a text shadow directly with our [CSS Text Shadow Generator](#).

Here you see how black text with a 4 pixel #B396A1 colored shadow looks like.

```
.shadow{ text-shadow: 4px 4px 2px #B396A1
}
```

Border

The CSS property to change the border of an element to Hex B396A1 is called "border". The border property can be set on classes, ids or directly on the HTML element.

This example shows the color as border, it can be applied via the CSS property "border" or "border-color".

```
.border, #border, table{ border:4px solid
#B396A1 }
```

If only the border color should be changed use the property `border-color`.

```
.border{ border-color:#B396A1 }
```

If you want to add a box shadow in that color use:

Here you see how a box with a 4 pixel #B396A1 colored shadow looks like.

```
.boxshadow{ -moz-box-shadow:4px 4px 4px  
4px #B396A1; -webkit-box-shadow:4px 4px  
4px 4px #B396A1; box-shadow:4px 4px 4px  
4px #B396A1 }
```

Background

The CSS property to change the background color of an element to Hex B396A1 is called "background". The background property can be set on classes, ids or directly on the HTML element.

```
.background, #background, body{  
background:#B396A1 }
```

If only the background color should be changed can be used:

```
.background{ background-color:#B396A1 }
```

This example shows the color as background, it is applied via the CSS property "background".

To optimize and compress your CSS code, you can use our [online CSS compressor and optimizer](#) based on csstidy. If you want to create a linear or radial gradient as background or border, check our [CSS Gradient Generator](#).

Hey! You found this booklet interesting? Support Converting Colors with the new Membership Option!

The pro membership hides all ads, plus gives you double the colors in the color bucket, and more awesome pro features!

[Learn more, Memberships starting at \\$2.50/m!](#)

**Follow me
on Twitter!**

@ConvertingColor