

Converting Colors

Hex(B39797)

Have a look what the booklet for
Hex(B39797) contains.

Hex(B39797)	3
<i>Conversions</i>	4
<i>Details</i>	6
<i>Harmonies</i>	11
<i>Previews</i>	23
<i>Color Blindness Simulation</i>	26
<i>CSS Examples</i>	29

Color

Hex(B39797)

Conversions

Conversions Part 1

Format	Color
Hex	B39797
RGB	179, 151, 151
RGB Percent	70%, 59%, 59%
CMY	0.2980, 0.4078, 0.4078
CMYK	0.00, 0.16, 0.16, 0.30
HSL	0°, 16%, 65%
HSV	0°, 16%, 70%
XYZ	35.2429, 33.9513, 33.9739
YIQ	159.3720, 16.6880, 5.9360

Conversions

Conversions Part 2

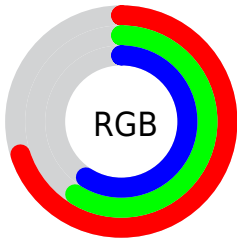
Format	Color
RYB	179, 151, 151
Decimal	11769751
CIELab	64.92, 10.40, 3.87
CIELCh	65, 11.097, 20.423
Yxy	33.9513, 0.3416, 0.3291
Android (android.graphics.Color)	4289959831 (0xFFB39797)
YUV	159.3720, -4.1274, 17.2138
Hunter-Lab	58.2677, 5.9962, 6.2175

Details

The Hex color **B39797** is a light color, and the websafe version is hex **CC9999**. A complement of this color would be **97B3B3**, and the grayscale version is **9F9F9F**.

A 20% lighter version of the original color is **EBCDCD**, and **7E6464** is the 20% darker color. If you saturate the color by 10%, you get **B38585**, and if you desaturate by 10%, it is **B3A9A9**.

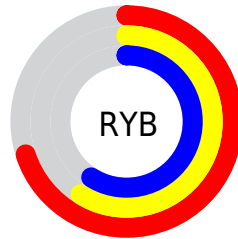
Distribution



Red (70%)

Green (59%)

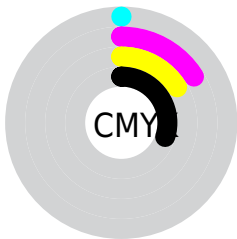
Blue (59%)



Red (70%)

Yellow (59%)

Blue (59%)

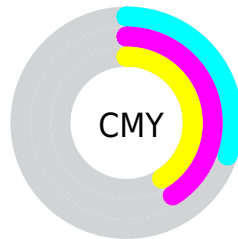


Cyan (0%)

Magenta (16%)

Yellow (16%)

Black (30%)



Cyan (30%)

Magenta (41%)

Yellow (41%)

Brightness & Saturation Gradients

These gradients show how the Hex color B39797 changes by changing the brightness by 10 percent. The first figure shows a shift by +10% for each color and the second figure -10%.

Similar to the brightness gradients but the following saturation gradients show a change of the Hex color B39797 by changing the saturation by 10% instead.

 B39797

 B39797

FFFFFF

 987D7D

 EBCDCD

 7E6464

 FFE9E9

 654C4C

 4C3536

 352020

 210909

 000000

 B39797

 B39797

 B38585

 B3A9A9

 B37373

 B3BBBB

 B36161

 B3CDCD

 B34F4F

 B3DFDF

 B33E3E

 B3F1F1

 B32C2C

 B3FFFF

 B31A1A

 B30808

 B30000

Harmonies

Analogous

The Analogous color harmony consists of three colors that are next to each other on the color wheel.



B097A1



B39797



B0998F

Triad

The Triadic color harmony groups three colors that are evenly spaced from another and form a triangle on the color wheel.



B39797



93A291



8F9FB1

Complementary

The Complementary color scheme is a pair of colors which are on the opposite of each other on the color wheel.



B39797



97B3B3

Split Complementary

Split-complementary colors differ from the complementary color scheme. The scheme consists of three colors, the original color and two neighbors of the complement color.



87A2AC



B39797



89A39A

Square

The Square scheme is like the rectangle color scheme, but the four colors are evenly spaced on the color wheel.



B39797



9E9F8B



85A3A4



9C9CB0

Rectangle

The Rectangle color scheme consists of four colors that form a rectangle on the color wheel.



B39797



AC9B8B



85A3A4



8CA0B0

Sweetspot

The Sweet Spot groups the original color and five complimentary colors.



B39797



E8DCDC



B397B3



756E6E



F5F5F5



757575

Same Dimension

The Same Dimension uses a secret algorithm to generate beautiful new colors.



B39797



E8BCBC



B3A597



595050



990000



1A0000

Inverse Universe

The Inverse Universe completely reimagines the original color for something new.



97B3B3



BCE8E8



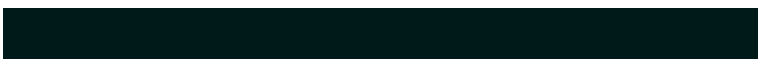
97A5B3



505959



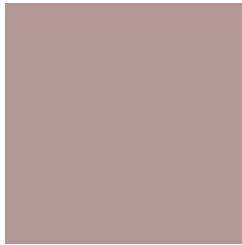
009999



001A1A

Previews

White Background



This preview shows how the Hex color B39797 looks on a white background.

Color Contrast Check

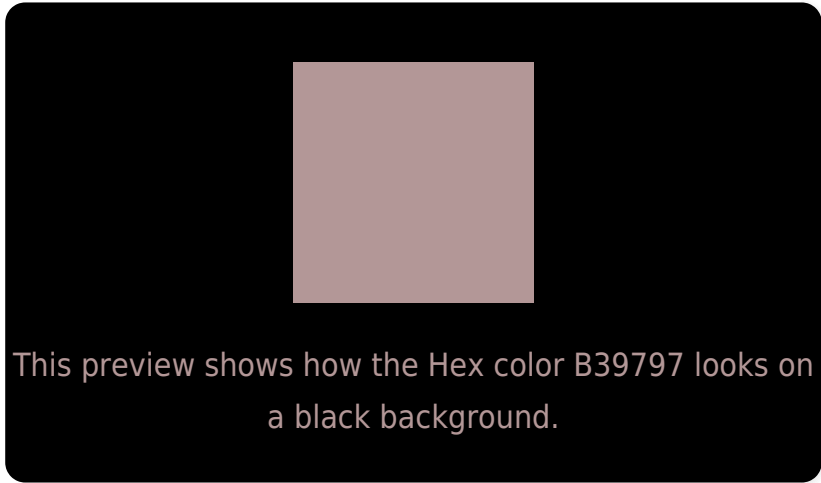
Large Text (above 18pt) WCAG AA × Fail

Any Text WCAG AA × Fail

Large Text (above 18pt) WCAG AAA × Fail

Any Text WCAG AAA × Fail

Black Background



Color Contrast Check

Large Text (above 18pt) WCAG AA ✓ Pass

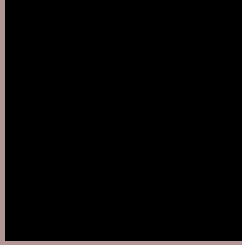
Any Text WCAG AA ✓ Pass

Large Text (above 18pt) WCAG AAA ✓ Pass

Any Text WCAG AAA ✓ Pass

If you want to check with other color combinations, try the [Color Contrast Checker](#).

Hex B39797 Background



This preview shows how black text looks on a background with the Hex color B39797.



This preview shows how white text looks on a background with the Hex color B39797.

Color Blindness Simulation

Color vision deficiency is a very complex topic, and I could not describe the different causes any better than Wikipedia does, so if you want to learn more, you should check out their [article about color blindness](#).

Dichromacy



Original Color
B39797

Protanopia
A19D9A

Deuteranopia
AF9897



Tritanopia
B495A1

Trichromacy



Original Color
B39797

Protanomaly
A89B99

Deuteranomaly
B09897

Tritanomaly
B4969D

Monochromacy



Original Color
B39797

Achromatopsia
9F9F9F

Achromatomaly
A69C9C

CSS Examples

Text

The CSS property to change the color of the text to Hex B39797 is called "color". The color property can be set on classes, ids or directly on the HTML element.

This example shows how text in the color #B39797 looks like.

```
.text, #text, p{  
    color:#B39797  
}
```

If you want to add a text shadow in that color use the text-shadow property, you can generate a text shadow directly with our [CSS Text Shadow Generator](#).

Here you see how black text with a 4 pixel #B39797 colored shadow looks like.

```
.shadow{ text-shadow: 4px 4px 2px #B39797
}
```

Border

The CSS property to change the border of an element to Hex B39797 is called "border". The border property can be set on classes, ids or directly on the HTML element.

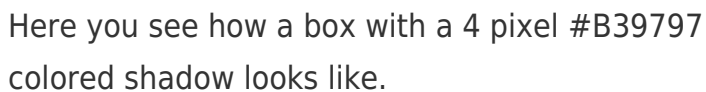
This example shows the color as border, it can be applied via the CSS property "border" or "border-color".

```
.border, #border, table{ border:4px solid
#B39797 }
```

If only the border color should be changed use the property `border-color`.

```
.border{ border-color:#B39797 }
```

If you want to add a box shadow in that color use:



Here you see how a box with a 4 pixel #B39797 colored shadow looks like.

```
.boxshadow{ -moz-box-shadow:4px 4px 4px  
4px #B39797; -webkit-box-shadow:4px 4px  
4px 4px #B39797; box-shadow:4px 4px 4px  
4px #B39797 }
```

Background

The CSS property to change the background color of an element to Hex B39797 is called "background". The background property can be set on classes, ids or directly on the HTML element.

```
.background, #background, body{  
background:#B39797 }
```

If only the background color should be changed can be used:

```
.background{ background-color:#B39797 }
```

This example shows the color as background, it is applied via the CSS property "background".

To optimize and compress your CSS code, you can use our [online CSS compressor and optimizer](#) based on csstidy. If you want to create a linear or radial gradient as background or border, check our [CSS Gradient Generator](#).

Hey! You found this booklet interesting? Support Converting Colors with the new Membership Option!

The pro membership hides all ads, plus gives you double the colors in the color bucket, and more awesome pro features!

[Learn more, Memberships starting at \\$2.50/m!](#)

**Follow me
on Twitter!**

@ConvertingColor