

Converting Colors

Hex(B39A7E)

Have a look what the booklet for
Hex(B39A7E) contains.

Hex(B39A7E)	3
<i>Conversions</i>	4
<i>Details</i>	6
<i>Harmonies</i>	11
<i>Previews</i>	23
<i>Color Blindness Simulation</i>	26
<i>CSS Examples</i>	29

Color

Hex(B39A7E)

Conversions

Conversions Part 1

Format	Color
Hex	B39A7E
RGB	179, 154, 126
RGB Percent	70%, 60%, 49%
CMY	0.2980, 0.3961, 0.5059
CMYK	0.00, 0.14, 0.30, 0.30
HSL	32°, 26%, 60%
HSV	32°, 30%, 70%
XYZ	33.9119, 34.2013, 24.5528
YIQ	158.2830, 23.8880, -3.4080

Conversions

Conversions Part 2

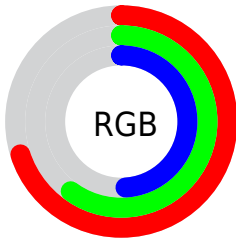
Format	Color
RYB	173, 179, 126
Decimal	11770494
CIELab	65.12, 4.97, 18.13
CIElCh	65, 18.800, 74.685
Yxy	34.2013, 0.3660, 0.3691
Android (android.graphics.Color)	4289960574 (0xFFB39A7E)
YUV	158.2830, -15.9155, 18.1688
Hunter-Lab	58.4818, 1.1637, 16.0452

Details

The Hex color **B39A7E** is a light color, and the websafe version is hex **999966**. A complement of this color would be **7E97B3**, and the grayscale version is **9E9E9E**.

A 20% lighter version of the original color is **EBD0B3**, and **7D674D** is the 20% darker color. If you saturate the color by 10%, you get **B3926C**, and if you desaturate by 10%, it is **B3A290**.

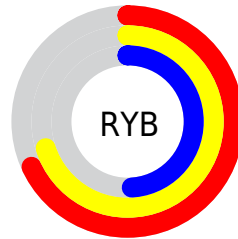
Distribution



Red (70%)

Green (60%)

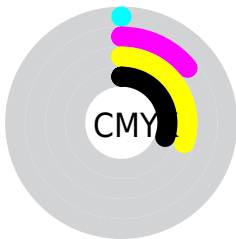
Blue (49%)



Red (68%)

Yellow (70%)

Blue (49%)

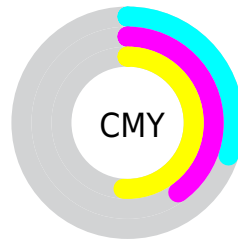


Cyan (0%)

Magenta (14%)

Yellow (30%)

Black (30%)



Cyan (30%)

Magenta (40%)

Yellow (51%)

Brightness & Saturation Gradients

These gradients show how the Hex color B39A7E changes by changing the brightness by 10 percent. The first figure shows a shift by +10% for each color and the second figure -10%.

Similar to the brightness gradients but the following saturation gradients show a change of the Hex color B39A7E by changing the saturation by 10% instead.

 B39A7E

 B39A7E

FFFFFF

 988065

 EBD0B3

 7D674D

 FFEDCE

 644F36

 FFFFEB

 4B3820

 34230A

 1E0E00

 000000

 B39A7E

 B39A7E

 B3926C

 B3A290

 B3895A

 B3ABA2

 B38148

 B3B3B4

 B37836

 B3BCC6

 B37025

 B3C4D8

 B36713

 B3CDE9

 B35F01

 B3D5FB

 B35F00

 B3DEFF

 B3E6FF

Harmonies

Analogous

The Analogous color harmony consists of three colors that are next to each other on the color wheel.



BE9587



B39A7E



A2A07D

Triad

The Triadic color harmony groups three colors that are evenly spaced from another and form a triangle on the color wheel.



B39A7E



71A8A6



AB97B6

Complementary

The Complementary color scheme is a pair of colors which are on the opposite of each other on the color wheel.



B39A7E



7E97B3

Split Complementary

Split-complementary colors differ from the complementary color scheme. The scheme consists of three colors, the original color and two neighbors of the complement color.



969DBE



B39A7E



72A6B5

Square

The Square scheme is like the rectangle color scheme, but the four colors are evenly spaced on the color wheel.



B39A7E



7DA795



80A2BE



BB93A7

Rectangle

The Rectangle color scheme consists of four colors that form a rectangle on the color wheel.



B39A7E



96A382



80A2BE



A499BA

Sweetspot

The Sweet Spot groups the original color and five complimentary colors.



B39A7E



E8DED3



B37E98



756F68



F5F5F5



757575

Same Dimension

The Same Dimension uses a secret algorithm to generate beautiful new colors.



B39A7E



E8C195



B2B37E



595550



995100



1A0D00

Inverse Universe

The Inverse Universe completely reimagines the original color for something new.



7E97B3



95BCE8



7F7EB3



505559



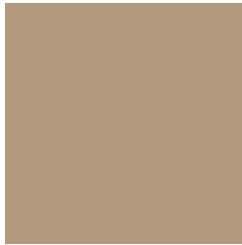
004899



000C1A

Previews

White Background



This preview shows how the Hex color B39A7E looks on a white background.

Color Contrast Check

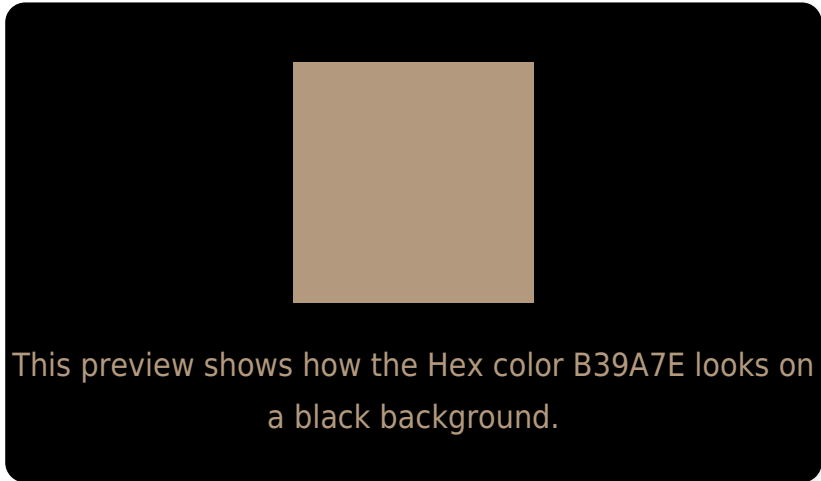
Large Text (above 18pt) WCAG AA × Fail

Any Text WCAG AA × Fail

Large Text (above 18pt) WCAG AAA × Fail

Any Text WCAG AAA × Fail

Black Background



Color Contrast Check

Large Text (above 18pt) WCAG AA ✓ Pass

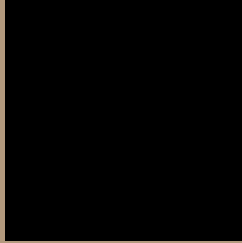
Any Text WCAG AA ✓ Pass

Large Text (above 18pt) WCAG AAA ✓ Pass

Any Text WCAG AAA ✓ Pass

If you want to check with other color combinations, try the [Color Contrast Checker](#).

Hex B39A7E Background



This preview shows how black text looks on a background with the Hex color B39A7E.

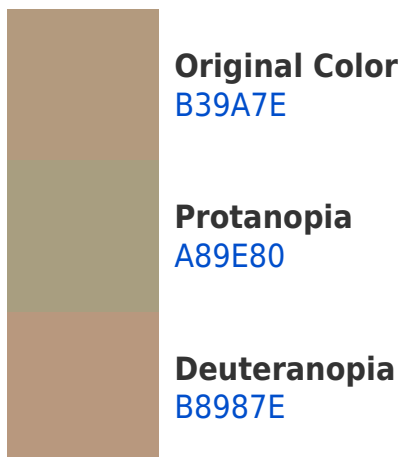


This preview shows how white text looks on a background with the Hex color B39A7E.

Color Blindness Simulation

Color vision deficiency is a very complex topic, and I could not describe the different causes any better than Wikipedia does, so if you want to learn more, you should check out their [article about color blindness](#).

Dichromacy





Tritanopia
B795A1

Trichromacy



Original Color
B39A7E

Protanomaly
AC9D7F

Deuteranomaly
B6997E

Tritanomaly
B69794

Monochromacy



Original Color
B39A7E

Achromatopsia
9E9E9E

Achromatomaly
A69D92

CSS Examples

Text

The CSS property to change the color of the text to Hex B39A7E is called "color". The color property can be set on classes, ids or directly on the HTML element.

This example shows how text in the color #B39A7E looks like.

```
.text, #text, p{  
    color:#B39A7E  
}
```

If you want to add a text shadow in that color use the text-shadow property, you can generate a text shadow directly with our [CSS Text Shadow Generator](#).

Here you see how black text with a 4 pixel #B39A7E colored shadow looks like.

```
.shadow{ text-shadow: 4px 4px 2px #B39A7E
}
```

Border

The CSS property to change the border of an element to Hex B39A7E is called "border". The border property can be set on classes, ids or directly on the HTML element.

This example shows the color as border, it can be applied via the CSS property "border" or "border-color".

```
.border, #border, table{ border:4px solid
#B39A7E }
```

If only the border color should be changed use the property `border-color`.

```
.border{ border-color:#B39A7E }
```

If you want to add a box shadow in that color use:

Here you see how a box with a 4 pixel #B39A7E colored shadow looks like.

```
.boxshadow{ -moz-box-shadow:4px 4px 4px  
4px #B39A7E; -webkit-box-shadow:4px 4px  
4px 4px #B39A7E; box-shadow:4px 4px 4px  
4px #B39A7E }
```

Background

The CSS property to change the background color of an element to Hex B39A7E is called "background". The background property can be set on classes, ids or directly on the HTML element.

```
.background, #background, body{  
background:#B39A7E }
```

If only the background color should be changed can be used:

```
.background{ background-color:#B39A7E }
```

This example shows the color as background, it is applied via the CSS property "background".

To optimize and compress your CSS code, you can use our [online CSS compressor and optimizer](#) based on csstidy. If you want to create a linear or radial gradient as background or border, check our [CSS Gradient Generator](#).

Hey! You found this booklet interesting? Support Converting Colors with the new Membership Option!

The pro membership hides all ads, plus gives you double the colors in the color bucket, and more awesome pro features!

[Learn more, Memberships starting at \\$2.50/m!](#)

**Follow me
on Twitter!**

@ConvertingColor