

# Converting Colors

Hex(B39C9E)

Have a look what the booklet for  
Hex(B39C9E) contains.

<b>Hex(B39C9E)</b> .....	3
<i><b>Conversions</b></i> .....	4
<i><b>Details</b></i> .....	6
<i><b>Harmonies</b></i> .....	11
<i><b>Previews</b></i> .....	23
<i><b>Color Blindness Simulation</b></i> .....	26
<i><b>CSS Examples</b></i> .....	29

# **Color**

**Hex(B39C9E)**

# Conversions

## Conversions Part 1

Format	Color
Hex	B39C9E
RGB	179, 156, 158
RGB Percent	70%, 61%, 62%
CMY	0.2980, 0.3882, 0.3804
CMYK	0.00, 0.13, 0.12, 0.30
HSL	355°, 13%, 66%
HSV	355°, 13%, 70%
XYZ	36.6504, 35.8293, 37.3318
YIQ	163.1050, 13.0660, 5.4980

# Conversions

## Conversions Part 2

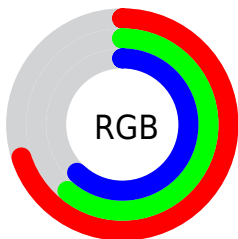
<b>Format</b>	<b>Color</b>
<b>RYB</b>	179, 156, 158
Decimal	11771038
CIELab	66.39, 8.80, 2.07
CIELCh	66, 9.043, 13.228
Yxy	35.8293, 0.3338, 0.3263
Android (android.graphics.Color)	4289961118 (0xFFB39C9E)
YUV	163.1050, -2.5168, 13.9399
Hunter-Lab	59.8575, 4.5438, 4.9224

# Details

The Hex color **B39C9E** is a light color, and the websafe version is hex **999999**. A complement of this color would be **9CB3B1**, and the grayscale version is **A3A3A3**.

A 20% lighter version of the original color is **EBD3D5**, and **7E696B** is the 20% darker color. If you saturate the color by 10%, you get **B38A8E**, and if you desaturate by 10%, it is **B3AEAE**.

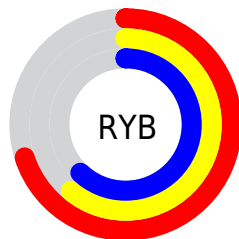
# Distribution



Red (70%)

Green (61%)

Blue (62%)



Red (70%)

Yellow (61%)

Blue (62%)

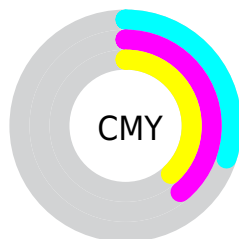


Cyan (0%)

Magenta (13%)

Yellow (12%)

Black (30%)



Cyan (30%)

Magenta (39%)

Yellow (38%)

# Brightness & Saturation Gradients

These gradients show how the Hex color B39C9E changes by changing the brightness by 10 percent. The first figure shows a shift by +10% for each color and the second figure -10%.

Similar to the brightness gradients but the following saturation gradients show a change of the Hex color B39C9E by changing the saturation by 10% instead.





B39C9E



B39C9E

FFFFFF



988284



EBD3D5



7E696B



FFEFF1



655153



4D3A3C



362426



200F11



000000



B39C9E



B39C9E



B38A8E



B3AEAE

 B3787D

 B3C0BF

 B3666D

 B3D2CF

 B3545D

 B3E4DF

 B3434C

 B3F6F0

 B3313C

 B3FFFF

 B31F2C

 B30D1B

 B30010

# Harmonies

## Analogous

The Analogous color harmony consists of three colors that are next to each other on the color wheel.



AF9CA6



B39C9E



B29D97

# Triad

The Triadic color harmony groups three colors that are evenly spaced from another and form a triangle on the color wheel.



B39C9E



9BA495



94A3B1

# Complementary

The Complementary color scheme is a pair of colors which are on the opposite of each other on the color wheel.



B39C9E



9CB3B1

# Split Complementary

Split-complementary colors differ from the complementary color scheme. The scheme consists of three colors, the original color and two neighbors of the complement color.



8EA5AC



B39C9E



93A69C

# Square

The Square scheme is like the rectangle color scheme, but the four colors are evenly spaced on the color wheel.



B39C9E



A4A292



8EA6A5



9DA1B1

# Rectangle

The Rectangle color scheme consists of four colors that form a rectangle on the color wheel.



B39C9E



AF9E93



8EA6A5



92A4B0



# Sweetspot

The Sweet Spot groups the original color and five complimentary colors.



B39C9E



E8DFE0



B19CB3



756F70



F5F5F5



757575



# Same Dimension

The Same Dimension uses a secret algorithm to generate beautiful new colors.



B39C9E



E8C5C8



B3A59C



595051



99000D



1A0002



# Inverse Universe

The Inverse Universe completely reimagines the original color for something new.



B39C9E



E8C5C8



9CAAB3



595051



99000D

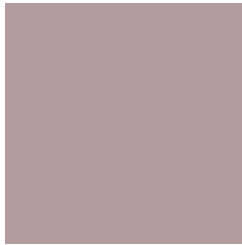


1A0002



# Previews

## White Background



This preview shows how the Hex color B39C9E looks on a white background.

## Color Contrast Check

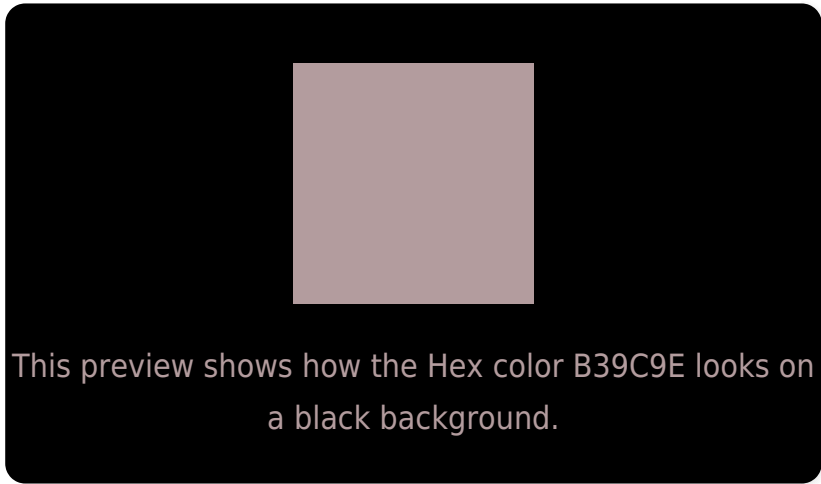
Large Text (above 18pt) WCAG AA × Fail

Any Text WCAG AA × Fail

Large Text (above 18pt) WCAG AAA × Fail

Any Text WCAG AAA × Fail

# Black Background



## Color Contrast Check

Large Text (above 18pt) WCAG AA ✓ Pass

Any Text WCAG AA ✓ Pass

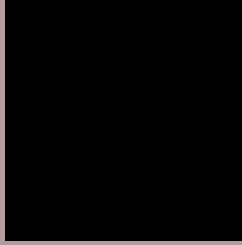
Large Text (above 18pt) WCAG AAA ✓ Pass

Any Text WCAG AAA ✓ Pass

If you want to check with other color combinations, try the [Color Contrast Checker](#).



## Hex B39C9E Background



This preview shows how black text looks on a background with the Hex color B39C9E.



This preview shows how white text looks on a background with the Hex color B39C9E.

# Color Blindness Simulation

Color vision deficiency is a very complex topic, and I could not describe the different causes any better than Wikipedia does, so if you want to learn more, you should check out their [article about color blindness](#).

## Dichromacy



**Original Color**  
B39C9E

**Protanopia**  
A4A1A1

**Deuteranopia**  
B29C9E



**Tritanopia**  
B49BA7

# Trichromacy



**Original Color**  
B39C9E

**Protanomaly**  
A99FA0

**Deuteranomaly**  
B29C9E

**Tritanomaly**  
B49BA4

# Monochromacy



**Original Color**  
B39C9E

**Achromatopsia**  
A3A3A3

**Achromatomaly**  
A9A0A1

# CSS Examples

## Text

The CSS property to change the color of the text to Hex B39C9E is called "color". The color property can be set on classes, ids or directly on the HTML element.

This example shows how text in the color #B39C9E looks like.

```
.text, #text, p{  
    color:#B39C9E  
}
```

If you want to add a text shadow in that color use the text-shadow property, you can generate a text shadow directly with our [CSS Text Shadow Generator](#).

Here you see how black text with a 4 pixel #B39C9E colored shadow looks like.

```
.shadow{ text-shadow: 4px 4px 2px #B39C9E
}
```

## Border

The CSS property to change the border of an element to Hex B39C9E is called "border". The border property can be set on classes, ids or directly on the HTML element.

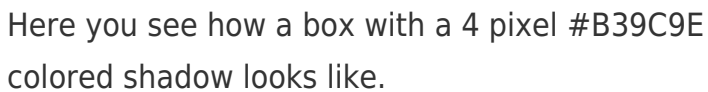
This example shows the color as border, it can be applied via the CSS property "border" or "border-color".

```
.border, #border, table{ border:4px solid
#B39C9E }
```

If only the border color should be changed use the property `border-color`.

```
.border{ border-color:#B39C9E }
```

If you want to add a box shadow in that color use:



Here you see how a box with a 4 pixel #B39C9E colored shadow looks like.

```
.boxshadow{ -moz-box-shadow:4px 4px 4px  
4px #B39C9E; -webkit-box-shadow:4px 4px  
4px 4px #B39C9E; box-shadow:4px 4px 4px  
4px #B39C9E }
```

# Background

The CSS property to change the background color of an element to Hex B39C9E is called "background". The background property can be set on classes, ids or directly on the HTML element.

```
.background, #background, body{  
background:#B39C9E }
```

If only the background color should be changed can be used:

```
.background{ background-color:#B39C9E }
```

This example shows the color as background, it is applied via the CSS property "background".

To optimize and compress your CSS code, you can use our [online CSS compressor and optimizer](#) based on csstidy. If you want to create a linear or radial gradient as background or border, check our [CSS Gradient Generator](#).



Hey! You found this booklet interesting? Support Converting Colors with the new Membership Option!

The pro membership hides all ads, plus gives you double the colors in the color bucket, and more awesome pro features!

**[Learn more, Memberships starting at \\$2.50/m!](#)**

**Follow me  
on Twitter!**

@ConvertingColor