

Converting Colors

Hex(B39EA6)

Have a look what the booklet for
Hex(B39EA6) contains.

Hex(B39EA6)	3
<i>Conversions</i>	4
<i>Details</i>	6
<i>Harmonies</i>	11
<i>Previews</i>	23
<i>Color Blindness Simulation</i>	26
<i>CSS Examples</i>	29

Color

Hex(B39EA6)

Conversions

Conversions Part 1

Format	Color
Hex	B39EA6
RGB	179, 158, 166
RGB Percent	70%, 62%, 65%
CMY	0.2980, 0.3804, 0.3490
CMYK	0.00, 0.12, 0.07, 0.30
HSL	337°, 12%, 66%
HSV	337°, 12%, 70%
XYZ	37.7002, 36.7906, 41.1907
YIQ	165.1910, 9.9480, 6.9400

Conversions

Conversions Part 2

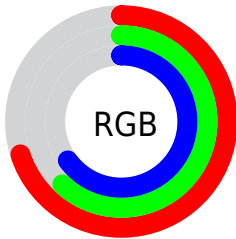
Format	Color
RYB	179, 158, 166
Decimal	11771558
CIELab	67.12, 9.10, -1.34
CIELCh	67, 9.195, 351.637
Yxy	36.7906, 0.3259, 0.3180
Android (android.graphics.Color)	4289961638 (0xFFB39EA6)
YUV	165.1910, 0.3988, 12.1105
Hunter-Lab	60.6553, 4.7998, 2.1951

Details

The Hex color **B39EA6** is a light color, and the websafe version is hex **999999**. A complement of this color would be **9EB3AB**, and the grayscale version is **A5A5A5**.

A 20% lighter version of the original color is **EBD5DD**, and **7E6B72** is the 20% darker color. If you saturate the color by 10%, you get **B38C9B**, and if you desaturate by 10%, it is **B3B0B1**.

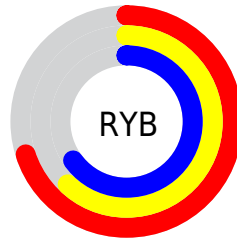
Distribution



Red (70%)

Green (62%)

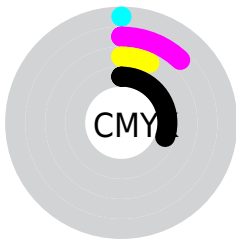
Blue (65%)



Red (70%)

Yellow (62%)

Blue (65%)

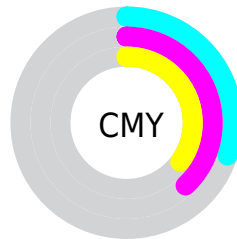


Cyan (0%)

Magenta (12%)

Yellow (7%)

Black (30%)



Cyan (30%)

Magenta (38%)

Yellow (35%)

Brightness & Saturation Gradients

These gradients show how the Hex color B39EA6 changes by changing the brightness by 10 percent. The first figure shows a shift by +10% for each color and the second figure -10%.

Similar to the brightness gradients but the following saturation gradients show a change of the Hex color B39EA6 by changing the saturation by 10% instead.



B39EA6



B39EA6

FFFFFF



98848C



EBD5DD



7E6B72



FFF1FA



65525A



4D3B42



36262C



211118



000000



B39EA6



B39EA6



B38C9B



B3B0B1

 B37A90

 B3C2BC

 B36885

 B3D4C7

 B3567A

 B3E6D2

 B3456F

 B3F8DD

 B33364

 B3FFE8

 B32158

 B3FFF4

 B30F4D

 B3FFFF

 B30044

Harmonies

Analogous

The Analogous color harmony consists of three colors that are next to each other on the color wheel.



ACA0AE



B39EA6



B59E9E

Triad

The Triadic color harmony groups three colors that are evenly spaced from another and form a triangle on the color wheel.



B39EA6



A4A594



91A7B0

Complementary

The Complementary color scheme is a pair of colors which are on the opposite of each other on the color wheel.



B39EA6



9EB3AB

Split Complementary

Split-complementary colors differ from the complementary color scheme. The scheme consists of three colors, the original color and two neighbors of the complement color.



8FA8A9



B39EA6



9AA799

Square

The Square scheme is like the rectangle color scheme, but the four colors are evenly spaced on the color wheel.



B39EA6



ADA293



92A8A1



98A5B3

Rectangle

The Rectangle color scheme consists of four colors that form a rectangle on the color wheel.



B39EA6



B49F99



92A8A1



90A8AE

Sweetspot

The Sweet Spot groups the original color and five complimentary colors.



B39EA6



E8DFE2



AB9EB3



756F72



F5F5F5



757575

Same Dimension

The Same Dimension uses a secret algorithm to generate beautiful new colors.



B39EA6



E8C8D4



B3A09E



595054



99003A



1A000A

Inverse Universe

The Inverse Universe completely reimagines the original color for something new.



B39EA6



E8C8D4



9EB1B3



595054



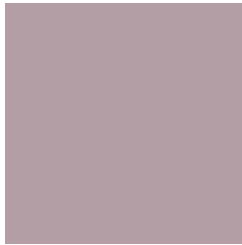
99003A



1A000A

Previews

White Background



This preview shows how the Hex color B39EA6 looks on a white background.

Color Contrast Check

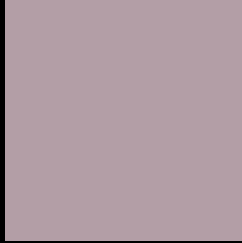
Large Text (above 18pt) WCAG AA × Fail

Any Text WCAG AA × Fail

Large Text (above 18pt) WCAG AAA × Fail

Any Text WCAG AAA × Fail

Black Background



This preview shows how the Hex color B39EA6 looks on a black background.

Color Contrast Check

Large Text (above 18pt) WCAG AA ✓ Pass

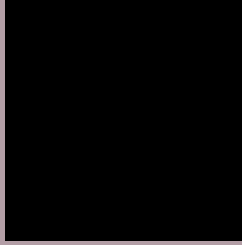
Any Text WCAG AA ✓ Pass

Large Text (above 18pt) WCAG AAA ✓ Pass

Any Text WCAG AAA ✓ Pass

If you want to check with other color combinations, try the [Color Contrast Checker](#).

Hex B39EA6 Background



This preview shows how black text looks on a background with the Hex color B39EA6.



This preview shows how white text looks on a background with the Hex color B39EA6.

Color Blindness Simulation

Color vision deficiency is a very complex topic, and I could not describe the different causes any better than Wikipedia does, so if you want to learn more, you should check out their [article about color blindness](#).

Dichromacy



Original Color
B39EA6

Protanopia
A5A3A9

Deuteranopia
B29EA6



Tritanopia
B49DAA

Trichromacy



Original Color
B39EA6

Protanomaly
AAA1A8

Deuteranomaly
B29EA6

Tritanomaly
B49DA9

Monochromacy



Original Color
B39EA6

Achromatopsia
A5A5A5

Achromatomaly
AAA2A5

CSS Examples

Text

The CSS property to change the color of the text to Hex B39EA6 is called "color". The color property can be set on classes, ids or directly on the HTML element.

This example shows how text in the color #B39EA6 looks like.

```
.text, #text, p{  
    color:#B39EA6  
}
```

If you want to add a text shadow in that color use the text-shadow property, you can generate a text shadow directly with our [CSS Text Shadow Generator](#).

Here you see how black text with a 4 pixel #B39EA6 colored shadow looks like.

```
.shadow{ text-shadow: 4px 4px 2px #B39EA6
}
```

Border

The CSS property to change the border of an element to Hex B39EA6 is called "border". The border property can be set on classes, ids or directly on the HTML element.

This example shows the color as border, it can be applied via the CSS property "border" or "border-color".

```
.border, #border, table{ border:4px solid
#B39EA6 }
```

If only the border color should be changed use the property `border-color`.

```
.border{ border-color:#B39EA6 }
```

If you want to add a box shadow in that color use:

Here you see how a box with a 4 pixel #B39EA6 colored shadow looks like.

```
.boxshadow{ -moz-box-shadow:4px 4px 4px  
4px #B39EA6; -webkit-box-shadow:4px 4px  
4px 4px #B39EA6; box-shadow:4px 4px 4px  
4px #B39EA6 }
```

Background

The CSS property to change the background color of an element to Hex B39EA6 is called "background". The background property can be set on classes, ids or directly on the HTML element.

```
.background, #background, body{  
background:#B39EA6 }
```

If only the background color should be changed can be used:

```
.background{ background-color:#B39EA6 }
```

This example shows the color as background, it is applied via the CSS property "background".

To optimize and compress your CSS code, you can use our [online CSS compressor and optimizer](#) based on csstidy. If you want to create a linear or radial gradient as background or border, check our [CSS Gradient Generator](#).

Hey! You found this booklet interesting? Support Converting Colors with the new Membership Option!

The pro membership hides all ads, plus gives you double the colors in the color bucket, and more awesome pro features!

[Learn more, Memberships starting at \\$2.50/m!](#)

**Follow me
on Twitter!**

@ConvertingColor