

# Converting Colors

Hex(B45853)

Have a look what the booklet for  
Hex(B45853) contains.

<b>Hex(B45853)</b> .....	3
<i><b>Conversions</b></i> .....	4
<i><b>Details</b></i> .....	6
<i><b>Harmonies</b></i> .....	11
<i><b>Previews</b></i> .....	23
<i><b>Color Blindness Simulation</b></i> .....	26
<i><b>CSS Examples</b></i> .....	29

# Color

**Hex(B45853)**

# Conversions

## Conversions Part 1

<b>Format</b>	<b>Color</b>
Hex	<a href="#">B45853</a>
RGB	<a href="#">180, 88, 83</a>
RGB Percent	<a href="#">71%, 35%, 33%</a>
CMY	<a href="#">0.2941, 0.6549, 0.6745</a>
CMYK	<a href="#">0.00, 0.51, 0.54, 0.29</a>
HSL	<a href="#">3°, 39%, 52%</a>
HSV	<a href="#">3°, 54%, 71%</a>
XYZ	<a href="#">23.8734, 17.3073, 10.2660</a>
YIQ	<a href="#">114.9380, 56.4370, 17.9490</a>

# Conversions

## Conversions Part 2

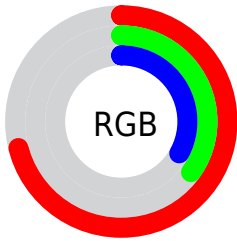
<b>Format</b>	<b>Color</b>
<b>R<sub>YB</sub></b>	180, 88, 83
Decimal	11819091
CIE Lab	48.64, 36.83, 20.43
CIE LCh	49, 42.117, 29.015
Yxy	17.3073, 0.4640, 0.3364
Android (android.graphics.Color)	4290009171 (0xFFB45853)
YUV	114.9380, -15.7454, 57.0594
Hunter-Lab	41.6020, 29.6293, 14.4906

# Details

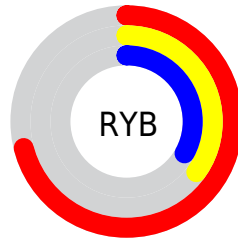
The Hex color **B45853** is a dark color, and the websafe version is hex **CC6666**. A complement of this color would be **53AFB4**, and the grayscale version is **737373**.

A 20% lighter version of the original color is **EF8C84**, and **7B2626** is the 20% darker color. If you saturate the color by 10%, you get **B44741**, and if you desaturate by 10%, it is **B46965**.

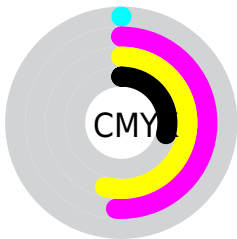
# Distribution



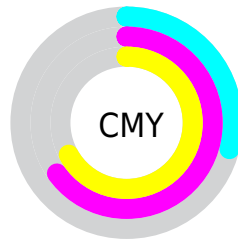
- Red (71%)
- Green (35%)
- Blue (33%)



- Red (71%)
- Yellow (35%)
- Blue (33%)



- Cyan (0%)
- Magenta (51%)
- Yellow (54%)
- Black (29%)



- Cyan (29%)
- Magenta (65%)
- Yellow (67%)

# Brightness & Saturation Gradients

These gradients show how the Hex color B45853 changes by changing the brightness by 10 percent. The first figure shows a shift by +10% for each color and the second figure -10%.

Similar to the brightness gradients but the following saturation gradients show a change of the Hex color B45853 by changing the saturation by 10% instead.



 B45853

 B45853

FFFFFF

 973F3C

 EF8C84

 7B2626

 FFA79F

 5F0912

 FFC3BA

 440000

 FFDFD5

 2B0001

 FFFCF2

 000000

 B45853

 B45853

 B44741

 B46965

 B4362F

 B47A77

 B4251D

 B48B89

 B4140B

 B49C9B

 B40900

 B4ADAD

 B4BEBF

 B4D0D1

 B4E1E3

 B4F2F5

# Harmonies

## Analogous

The Analogous color harmony consists of three colors that are next to each other on the color wheel.



B35476



B45853



A46437

# Triad

The Triadic color harmony groups three colors that are evenly spaced from another and form a triangle on the color wheel.



B45853



36824D



2378BB

# Complementary

The Complementary color scheme is a pair of colors which are on the opposite of each other on the color wheel.



B45853



53AFB4

# Split Complementary

Split-complementary colors differ from the complementary color scheme. The scheme consists of three colors, the original color and two neighbors of the complement color.



0081B0



B45853



008571

# Square

The Square scheme is like the rectangle color scheme, but the four colors are evenly spaced on the color wheel.



B45853



657C32



008595



736BB2

# Rectangle

The Rectangle color scheme consists of four colors that form a rectangle on the color wheel.



B45853



936D2B



008595



007BB9



# Sweetspot

The Sweet Spot groups the original color and five complimentary colors.



B45853



EBC7C5



B453AF



75605F



F5F5F5



757575



# Same Dimension

The Same Dimension uses a secret algorithm to generate beautiful new colors.



B45853



EB5A52



B48853



595150



990800



1A0100



# Inverse Universe

The Inverse Universe completely reimagines the original color for something new.



53AFB4



52E3EB



537FB4



505959



009199

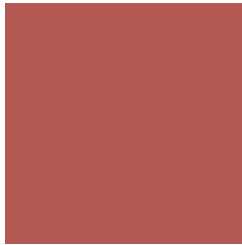


00181A



# Previews

## White Background



This preview shows how the Hex color B45853 looks on a white background.

## Color Contrast Check

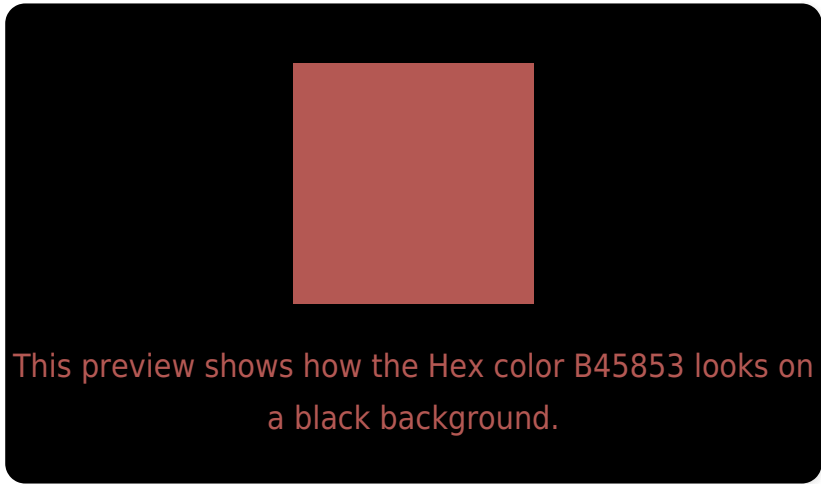
Large Text (above 18pt) WCAG AA ✓ Pass

Any Text WCAG AA ✓ Pass

Large Text (above 18pt) WCAG AAA ✓ Pass

Any Text WCAG AAA × Fail

# Black Background



## Color Contrast Check

Large Text (above 18pt) WCAG AA ✓ Pass

Any Text WCAG AA × Fail

Large Text (above 18pt) WCAG AAA × Fail

Any Text WCAG AAA × Fail

If you want to check with other color combinations, try the [Color Contrast Checker](#).



## Hex B45853 Background



This preview shows how black text looks on a background with the Hex color B45853.



This preview shows how white text looks on a background with the Hex color B45853.

# Color Blindness Simulation

Color vision deficiency is a very complex topic, and I could not describe the different causes any better than Wikipedia does, so if you want to learn more, you should check out their [article about color blindness](#).


## Dichromacy



**Original Color**  
B45853

**Protanopia**  
7B745F

**Deuteranopia**  
8B6F4F



**Tritanopia**  
B5575D

# Trichromacy



**Original Color**  
B45853

**Protanomaly**  
906A5B

**Deuteranomaly**  
9A6750

**Tritanomaly**  
B55759

# Monochromacy



**Original Color**  
B45853

**Achromatopsia**  
737373

**Achromatomaly**  
8B6967

# CSS Examples

## Text

The CSS property to change the color of the text to Hex B45853 is called "color". The color property can be set on classes, ids or directly on the HTML element.

This example shows how text in the color #B45853 looks like.

```
.text, #text, p{  
    color:#B45853  
}
```

If you want to add a text shadow in that color use the text-shadow property, you can generate a text shadow directly with our [CSS Text Shadow Generator](#).

Here you see how black text with a 4 pixel #B45853 colored shadow looks like.

```
.shadow{ text-shadow: 4px 4px 2px #B45853
}
```

## Border

The CSS property to change the border of an element to Hex B45853 is called "border". The border property can be set on classes, ids or directly on the HTML element.

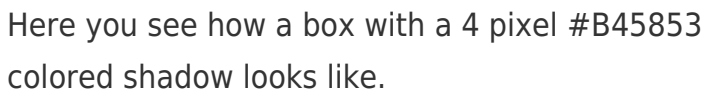
This example shows the color as border, it can be applied via the CSS property "border" or "border-color".

```
.border, #border, table{ border:4px solid
#B45853 }
```

If only the border color should be changed use the property `border-color`.

```
.border{ border-color:#B45853 }
```

If you want to add a box shadow in that color use:



Here you see how a box with a 4 pixel #B45853 colored shadow looks like.

```
.boxshadow{ -moz-box-shadow:4px 4px 4px  
4px #B45853; -webkit-box-shadow:4px 4px  
4px 4px #B45853; box-shadow:4px 4px 4px  
4px #B45853 }
```

# Background

The CSS property to change the background color of an element to Hex B45853 is called "background". The background property can be set on classes, ids or directly on the HTML element.

```
.background, #background, body{  
background:#B45853 }
```

If only the background color should be changed can be used:

```
.background{ background-color:#B45853 }
```

This example shows the color as background, it is applied via the CSS property "background".

To optimize and compress your CSS code, you can use our [online CSS compressor and optimizer](#) based on csstidy. If you want to create a linear or radial gradient as background or border, check our [CSS Gradient Generator](#).



Hey! You found this booklet interesting? Support Converting Colors with the new Membership Option!

The pro membership hides all ads, plus gives you double the colors in the color bucket, and more awesome pro features!

**[Learn more, Memberships starting at \\$2.50/m!](#)**

**Follow me  
on Twitter!**

@ConvertingColor