

Converting Colors

Hex(B4767F)

Have a look what the booklet for
Hex(B4767F) contains.

Hex(B4767F)	3
<i>Conversions</i>	4
<i>Details</i>	6
<i>Harmonies</i>	11
<i>Previews</i>	23
<i>Color Blindness Simulation</i>	26
<i>CSS Examples</i>	29

Color

Hex(B4767F)

Conversions

Conversions Part 1

Format	Color
Hex	B4767F
RGB	180, 118, 127
RGB Percent	71%, 46%, 50%
CMY	0.2941, 0.5373, 0.5020
CMYK	0.00, 0.34, 0.29, 0.29
HSL	351°, 29%, 58%
HSV	351°, 34%, 71%
XYZ	29.1316, 24.1925, 23.2129
YIQ	137.5640, 34.0630, 15.9430

Conversions

Conversions Part 2

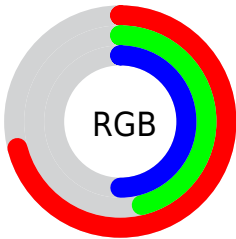
Format	Color
R_{YB}	180, 118, 127
Decimal	11826815
CIE _{Lab}	56.28, 25.56, 5.14
CIE _{LCh}	56, 26.076, 11.375
Yxy	24.1925, 0.3806, 0.3161
Android (android.graphics.Color)	4290016895 (0xFFB4767F)
YUV	137.5640, -5.2081, 37.2164
Hunter-Lab	49.1858, 19.6460, 6.4486

Details

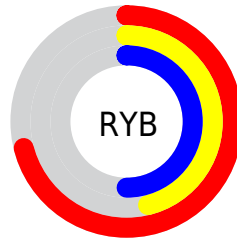
The Hex color **B4767F** is a dark color, and the websafe version is hex **996666**. A complement of this color would be **76B4AB**, and the grayscale version is **8A8A8A**.

A 20% lighter version of the original color is **EDABB4**, and **7D454E** is the 20% darker color. If you saturate the color by 10%, you get **B46470**, and if you desaturate by 10%, it is **B4888E**.

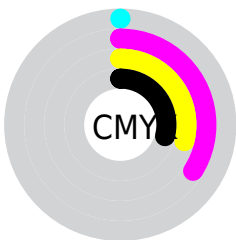
Distribution



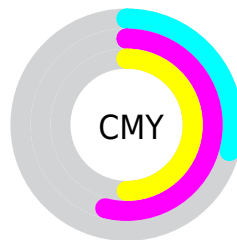
- Red (71%)
- Green (46%)
- Blue (50%)



- Red (71%)
- Yellow (46%)
- Blue (50%)



- Cyan (0%)
- Magenta (34%)
- Yellow (29%)
- Black (29%)



- Cyan (29%)
- Magenta (54%)
- Yellow (50%)

Brightness & Saturation Gradients

These gradients show how the Hex color B4767F changes by changing the brightness by 10 percent. The first figure shows a shift by +10% for each color and the second figure -10%.

Similar to the brightness gradients but the following saturation gradients show a change of the Hex color B4767F by changing the saturation by 10% instead.

 B4767F

 B4767F

FFFFFF

 985D66

 EDABB4

 7D454E

 FFC6CF

 632D37

 FFE2EB

 4A1622

 32000C

 150000

 000000

 B4767F

 B4767F

 B46470

 B4888E

 B45260

 B49A9E

 B44051

 B4ACAD

 B42E41

 B4BEBD

 B41C32

 B4D0CC

 B40A23

 B4E2DB

 B4001A

 B4F4EB

 B4FFFA

 B4FFFF

Harmonies

Analogous

The Analogous color harmony consists of three colors that are next to each other on the color wheel.



AB7896



B4767F



B17A6A

Triad

The Triadic color harmony groups three colors that are evenly spaced from another and form a triangle on the color wheel.



B4767F



758E64



548DB1

Complementary

The Complementary color scheme is a pair of colors which are on the opposite of each other on the color wheel.



B4767F



76B4AB

Split Complementary

Split-complementary colors differ from the complementary color scheme. The scheme consists of three colors, the original color and two neighbors of the complement color.



3E92A4



B4767F



5A9278

Square

The Square scheme is like the rectangle color scheme, but the four colors are evenly spaced on the color wheel.



B4767F



8E885A



43938F



7686B3

Rectangle

The Rectangle color scheme consists of four colors that form a rectangle on the color wheel.



B4767F



A97E60



43938F



4A8FAE

Sweetspot

The Sweet Spot groups the original color and five complimentary colors.



B4767F



EBD3D7



AB76B4



756769



F5F5F5



757575

Same Dimension

The Same Dimension uses a secret algorithm to generate beautiful new colors.



B4767F



EB8A98



B48C76



595052



990016



1A0004

Inverse Universe

The Inverse Universe completely reimagines the original color for something new.



B4767F



EB8A98



769EB4



595052



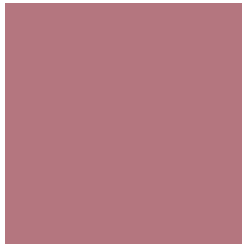
990016



1A0004

Previews

White Background



This preview shows how the Hex color B4767F looks on a white background.

Color Contrast Check

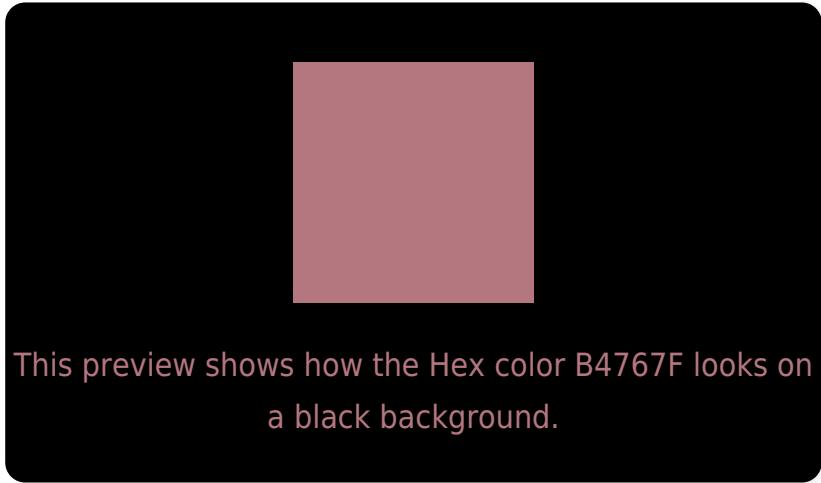
Large Text (above 18pt) WCAG AA ✓ Pass

Any Text WCAG AA ✗ Fail

Large Text (above 18pt) WCAG AAA ✗ Fail

Any Text WCAG AAA ✗ Fail

Black Background



Color Contrast Check

Large Text (above 18pt) WCAG AA ✓ Pass

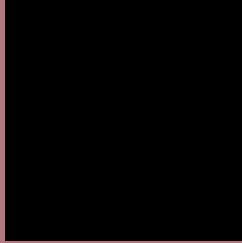
Any Text WCAG AA ✓ Pass

Large Text (above 18pt) WCAG AAA ✓ Pass

Any Text WCAG AAA × Fail

If you want to check with other color combinations, try the [Color Contrast Checker](#).

Hex B4767F Background



This preview shows how black text looks on a background with the Hex color B4767F.




This preview shows how white text looks on a background with the Hex color B4767F.

Color Blindness Simulation

Color vision deficiency is a very complex topic, and I could not describe the different causes any better than Wikipedia does, so if you want to learn more, you should check out their [article about color blindness](#).

Dichromacy





Tritanopia
B4767F

Trichromacy



Original Color
B4767F

Protanomaly
998185

Deuteranomaly
A27E7E

Tritanomaly
B4767F

Monochromacy



Original Color
B4767F

Achromatopsia
8A8A8A

Achromatomaly
998386

CSS Examples

Text

The CSS property to change the color of the text to Hex B4767F is called "color". The color property can be set on classes, ids or directly on the HTML element.

This example shows how text in the color #B4767F looks like.

```
.text, #text, p{  
    color:#B4767F  
}
```

If you want to add a text shadow in that color use the text-shadow property, you can generate a text shadow directly with our [CSS Text Shadow Generator](#).

Here you see how black text with a 4 pixel #B4767F colored shadow looks like.

```
.shadow{ text-shadow: 4px 4px 2px #B4767F
}
```

Border

The CSS property to change the border of an element to Hex B4767F is called "border". The border property can be set on classes, ids or directly on the HTML element.

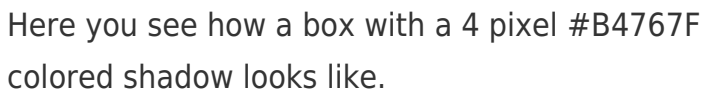
This example shows the color as border, it can be applied via the CSS property "border" or "border-color".

```
.border, #border, table{ border:4px solid
#B4767F }
```

If only the border color should be changed use the property `border-color`.

```
.border{ border-color:#B4767F }
```

If you want to add a box shadow in that color use:



Here you see how a box with a 4 pixel #B4767F colored shadow looks like.

```
.boxshadow{ -moz-box-shadow:4px 4px 4px  
4px #B4767F; -webkit-box-shadow:4px 4px  
4px 4px #B4767F; box-shadow:4px 4px 4px  
4px #B4767F }
```

Background

The CSS property to change the background color of an element to Hex B4767F is called "background". The background property can be set on classes, ids or directly on the HTML element.

```
.background, #background, body{  
background:#B4767F }
```

If only the background color should be changed can be used:

```
.background{ background-color:#B4767F }
```

This example shows the color as background, it is applied via the CSS property "background".

To optimize and compress your CSS code, you can use our [online CSS compressor and optimizer](#) based on csstidy. If you want to create a linear or radial gradient as background or border, check our [CSS Gradient Generator](#).

Hey! You found this booklet interesting? Support Converting Colors with the new Membership Option!

The pro membership hides all ads, plus gives you double the colors in the color bucket, and more awesome pro features!

[Learn more, Memberships starting at \\$2.50/m!](#)

**Follow me
on Twitter!**

@ConvertingColor