

# Converting Colors

Hex(B47880)

Have a look what the booklet for  
Hex(B47880) contains.

<b>Hex(B47880)</b> .....	3
<b><i>Conversions</i></b> .....	4
<b><i>Details</i></b> .....	6
<b><i>Harmonies</i></b> .....	11
<b><i>Previews</i></b> .....	23
<b><i>Color Blindness Simulation</i></b> .....	26
<b><i>CSS Examples</i></b> .....	29

**Color**

**Hex(B47880)**

# Conversions

## Conversions Part 1

<b>Format</b>	<b>Color</b>
Hex	<a href="#">B47880</a>
RGB	<a href="#">180, 120, 128</a>
RGB Percent	<a href="#">71%, 47%, 50%</a>
CMY	<a href="#">0.2941, 0.5294, 0.4980</a>
CMYK	<a href="#">0.00, 0.33, 0.29, 0.29</a>
HSL	<a href="#">352°, 29%, 59%</a>
HSV	<a href="#">352°, 33%, 71%</a>
XYZ	<a href="#">29.4351, 24.6948, 23.6372</a>
YIQ	<a href="#">138.8520, 33.1920, 15.2080</a>

# Conversions

## Conversions Part 2

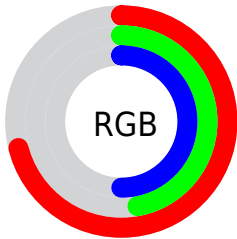
Format	Color
<b>RYB</b>	180, 120, 128
Decimal	11827328
CIELab	56.78, 24.59, 5.28
CIELCh	57, 25.149, 12.110
Yxy	24.6948, 0.3785, 0.3175
Android (android.graphics.Color)	4290017408 (0xFFB47880)
YUV	138.8520, -5.3500, 36.0868
Hunter-Lab	49.6938, 18.7667, 6.5839

# Details

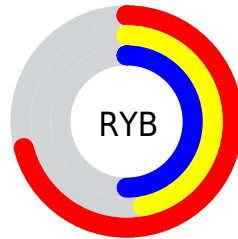
The Hex color **B47880** is a dark color, and the websafe version is hex **996666**. A complement of this color would be **78B4AC**, and the grayscale version is **8B8B8B**.

A 20% lighter version of the original color is **EDADB5**, and **7E474F** is the 20% darker color. If you saturate the color by 10%, you get **B46670**, and if you desaturate by 10%, it is **B48A90**.

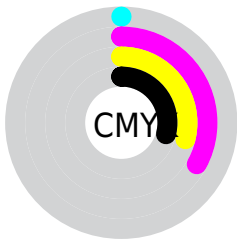
# Distribution



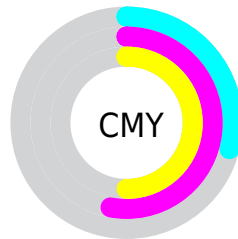
- Red (71%)
- Green (47%)
- Blue (50%)



- Red (71%)
- Yellow (47%)
- Blue (50%)



- Cyan (0%)
- Magenta (33%)
- Yellow (29%)
- Black (29%)



- Cyan (29%)
- Magenta (53%)
- Yellow (50%)

# Brightness & Saturation Gradients

These gradients show how the Hex color B47880 changes by changing the brightness by 10 percent. The first figure shows a shift by +10% for each color and the second figure -10%.

Similar to the brightness gradients but the following saturation gradients show a change of the Hex color B47880 by changing the saturation by 10% instead.



 B47880

 B47880

FFFFFF

 985F67

 EDADB5

 7E474F

 FFC8D0

 632F38

 FFE5EC

 4A1923

 32020D

 170000

 000000

 B47880

 B47880

 B46670

 B48A90

 B45461

 B49C9F

 B44251

 B4AEAF

 B43042

 B4C0BE

 B41E32

 B4D2CE

 B40C22

 B4E4DE

 B40018

 B4F6ED

 B4FFFD

 B4FFFF

# Harmonies

## Analogous

The Analogous color harmony consists of three colors that are next to each other on the color wheel.



AB7A96



B47880



B17C6C

# Triad

The Triadic color harmony groups three colors that are evenly spaced from another and form a triangle on the color wheel.



B47880



769067



598EB1

# Complementary

The Complementary color scheme is a pair of colors which are on the opposite of each other on the color wheel.



B47880



78B4AC

# Split Complementary

Split-complementary colors differ from the complementary color scheme. The scheme consists of three colors, the original color and two neighbors of the complement color.



4493A5



B47880



5D937A

# Square

The Square scheme is like the rectangle color scheme, but the four colors are evenly spaced on the color wheel.



B47880



8F8A5D



489491



7987B3

# Rectangle

The Rectangle color scheme consists of four colors that form a rectangle on the color wheel.



B47880



A98062



489491



5090AE



# Sweetspot

The Sweet Spot groups the original color and five complimentary colors.



B47880



EBD3D6



AC78B4



756769



F5F5F5



757575



# Same Dimension

The Same Dimension uses a secret algorithm to generate beautiful new colors.



B47880



EB8D99



B48E78



595052



990014



1A0003



# Inverse Universe

The Inverse Universe completely reimagines the original color for something new.



B47880



EB8D99



789EB4



595052



990014

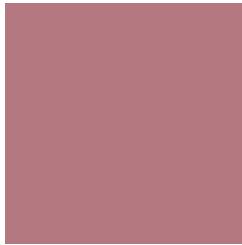


1A0003



# Previews

## White Background



This preview shows how the Hex color B47880 looks on a white background.

## Color Contrast Check

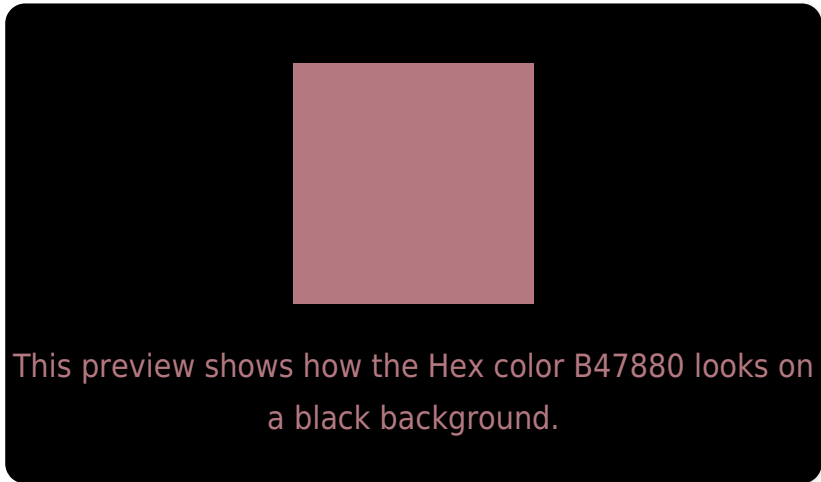
Large Text (above 18pt) WCAG AA ✓ Pass

Any Text WCAG AA ✗ Fail

Large Text (above 18pt) WCAG AAA ✗ Fail

Any Text WCAG AAA ✗ Fail

# Black Background



## Color Contrast Check

Large Text (above 18pt) WCAG AA ✓ Pass

Any Text WCAG AA ✓ Pass

Large Text (above 18pt) WCAG AAA ✓ Pass

Any Text WCAG AAA × Fail

If you want to check with other color combinations, try the [Color Contrast Checker](#).



## Hex B47880 Background



This preview shows how black text looks on a background with the Hex color B47880.

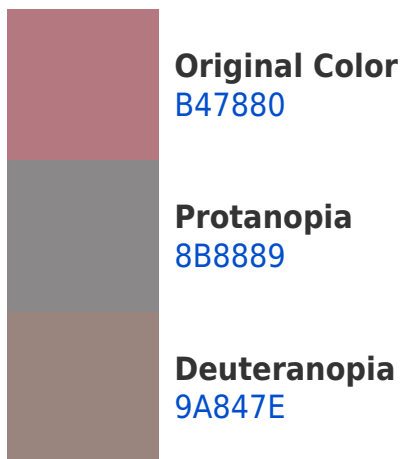


This preview shows how white text looks on a background with the Hex color B47880.

# Color Blindness Simulation

Color vision deficiency is a very complex topic, and I could not describe the different causes any better than Wikipedia does, so if you want to learn more, you should check out their [article about color blindness](#).

## Dichromacy





**Tritanopia**  
B47881

# Trichromacy



**Original Color**  
B47880

**Protanomaly**  
9A8286

**Deuteranomaly**  
A3807F

**Tritanomaly**  
B47881

# Monochromacy



**Original Color**  
B47880

**Achromatopsia**  
8B8B8B

**Achromatomaly**  
9A8487

# CSS Examples

## Text

The CSS property to change the color of the text to Hex B47880 is called "color". The color property can be set on classes, ids or directly on the HTML element.

This example shows how text in the color #B47880 looks like.

```
.text, #text, p{  
    color:#B47880  
}
```

If you want to add a text shadow in that color use the text-shadow property, you can generate a text shadow directly with our [CSS Text Shadow Generator](#).

Here you see how black text with a 4 pixel #B47880 colored shadow looks like.

```
.shadow{ text-shadow: 4px 4px 2px #B47880
}
```

## Border

The CSS property to change the border of an element to Hex B47880 is called "border". The border property can be set on classes, ids or directly on the HTML element.

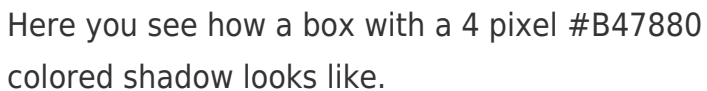
This example shows the color as border, it can be applied via the CSS property "border" or "border-color".

```
.border, #border, table{ border:4px solid
#B47880 }
```

If only the border color should be changed use the property `border-color`.

```
.border{ border-color:#B47880 }
```

If you want to add a box shadow in that color use:



Here you see how a box with a 4 pixel #B47880 colored shadow looks like.

```
.boxshadow{ -moz-box-shadow:4px 4px 4px  
4px #B47880; -webkit-box-shadow:4px 4px  
4px 4px #B47880; box-shadow:4px 4px 4px  
4px #B47880 }
```

# Background

The CSS property to change the background color of an element to Hex B47880 is called "background". The background property can be set on classes, ids or directly on the HTML element.

```
.background, #background, body{  
background:#B47880 }
```

If only the background color should be changed can be used:

```
.background{ background-color:#B47880 }
```

This example shows the color as background, it is applied via the CSS property "background".

To optimize and compress your CSS code, you can use our [online CSS compressor and optimizer](#) based on csstidy. If you want to create a linear or radial gradient as background or border, check our [CSS Gradient Generator](#).



Hey! You found this booklet interesting? Support Converting Colors with the new Membership Option!

The pro membership hides all ads, plus gives you double the colors in the color bucket, and more awesome pro features!

**[Learn more, Memberships starting at \\$2.50/m!](#)**

**Follow me  
on Twitter!**

@ConvertingColor