

Converting Colors

Hex(B47885)

Have a look what the booklet for
Hex(B47885) contains.

Hex(B47885)	3
<i>Conversions</i>	4
<i>Details</i>	6
<i>Harmonies</i>	11
<i>Previews</i>	23
<i>Color Blindness Simulation</i>	26
<i>CSS Examples</i>	29

Color

Hex(B47885)

Conversions

Conversions Part 1

Format	Color
Hex	B47885
RGB	180, 120, 133
RGB Percent	71%, 47%, 52%
CMY	0.2941, 0.5294, 0.4784
CMYK	0.00, 0.33, 0.26, 0.29
HSL	347°, 29%, 59%
HSV	347°, 33%, 71%
XYZ	29.7725, 24.8297, 25.4137
YIQ	139.4220, 31.5870, 16.7630

Conversions

Conversions Part 2

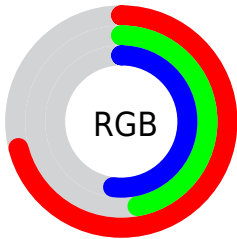
Format	Color
R_{YB}	180, 120, 133
Decimal	11827333
CIE _{Lab}	56.91, 25.31, 2.57
CIE _{LCh}	57, 25.436, 5.788
Yxy	24.8297, 0.3721, 0.3103
Android (android.graphics.Color)	4290017413 (0xFFB47885)
YUV	139.4220, -3.1660, 35.5869
Hunter-Lab	49.8294, 19.4503, 4.6418

Details

The Hex color **B47885** is a dark color, and the websafe version is hex **996666**. A complement of this color would be **78B4A7**, and the grayscale version is **8B8B8B**.

A 20% lighter version of the original color is **EDADBA**, and **7E4654** is the 20% darker color. If you saturate the color by 10%, you get **B46677**, and if you desaturate by 10%, it is **B48A93**.

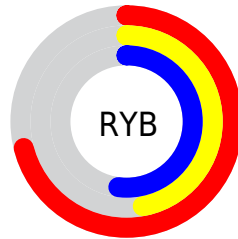
Distribution



Red (71%)

Green (47%)

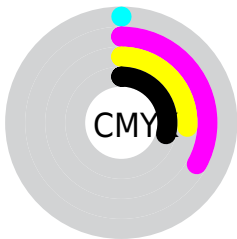
Blue (52%)



Red (71%)

Yellow (47%)

Blue (52%)

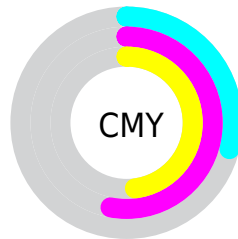


Cyan (0%)

Magenta (33%)

Yellow (26%)

Black (29%)



Cyan (29%)

Magenta (53%)

Yellow (48%)

Brightness & Saturation Gradients

These gradients show how the Hex color B47885 changes by changing the brightness by 10 percent. The first figure shows a shift by +10% for each color and the second figure -10%.

Similar to the brightness gradients but the following saturation gradients show a change of the Hex color B47885 by changing the saturation by 10% instead.



B47885



B47885

FFFFFF



995F6C



EDADBA



7E4654



FFC8D6



642F3D



FFE5F2



4A1827



320212



190001



000000



B47885



B47885



B46677



B48A93

 B45469

 B49CA1

 B4425B

 B4AEAF

 B4304D

 B4C0BD

 B41E3F

 B4D2CC

 B40C30

 B4E4DA

 B40027

 B4F6E8

 B4FFF6

 B4FFFF

Harmonies

Analogous

The Analogous color harmony consists of three colors that are next to each other on the color wheel.



A87B9B



B47885



B37B70

Triad

The Triadic color harmony groups three colors that are evenly spaced from another and form a triangle on the color wheel.



B47885



7C8F64



5290B0

Complementary

The Complementary color scheme is a pair of colors which are on the opposite of each other on the color wheel.



B47885



78B4A7

Split Complementary

Split-complementary colors differ from the complementary color scheme. The scheme consists of three colors, the original color and two neighbors of the complement color.



4194A2



B47885



629376

Square

The Square scheme is like the rectangle color scheme, but the four colors are evenly spaced on the color wheel.



B47885



94895C



4B958C



7289B4

Rectangle

The Rectangle color scheme consists of four colors that form a rectangle on the color wheel.



B47885



AC7F65



4B958C



4A91AD

Sweetspot

The Sweet Spot groups the original color and five complimentary colors.



B47885



EBD3D8



A778B4



75676A



F5F5F5



757575

Same Dimension

The Same Dimension uses a secret algorithm to generate beautiful new colors.



B47885



EB8DA1



B48978



595052



990021



1A0006

Inverse Universe

The Inverse Universe completely reimagines the original color for something new.



B47885



EB8DA1



78A3B4



595052



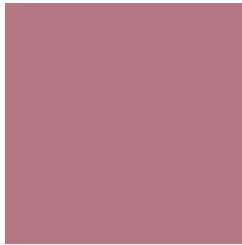
990021



1A0006

Previews

White Background



This preview shows how the Hex color B47885 looks on a white background.

Color Contrast Check

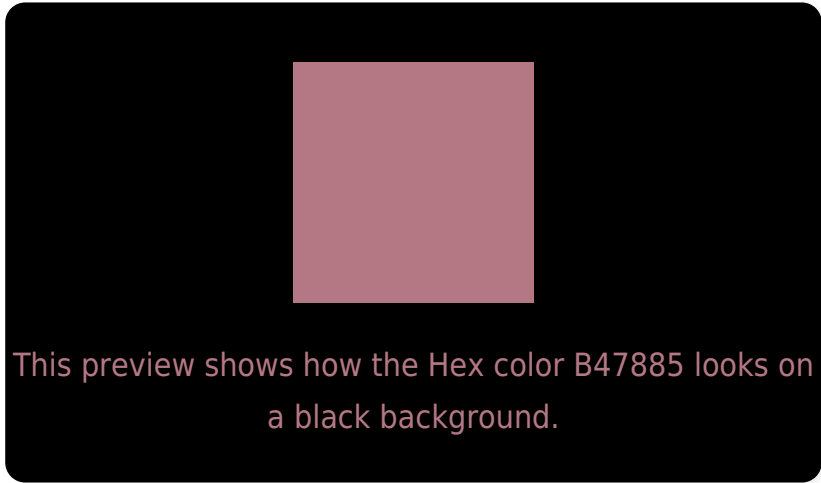
Large Text (above 18pt) WCAG AA ✓ Pass

Any Text WCAG AA × Fail

Large Text (above 18pt) WCAG AAA × Fail

Any Text WCAG AAA × Fail

Black Background



Color Contrast Check

Large Text (above 18pt) WCAG AA ✓ Pass

Any Text WCAG AA ✓ Pass

Large Text (above 18pt) WCAG AAA ✓ Pass

Any Text WCAG AAA × Fail

If you want to check with other color combinations, try the [Color Contrast Checker](#).

Hex B47885 Background



This preview shows how black text looks on a background with the Hex color B47885.



This preview shows how white text looks on a background with the Hex color B47885.

Color Blindness Simulation

Color vision deficiency is a very complex topic, and I could not describe the different causes any better than Wikipedia does, so if you want to learn more, you should check out their [article about color blindness](#).

Dichromacy



Original Color
B47885

Protanopia
8A888E

Deuteranopia
988483



Tritanopia
B47982

Trichromacy



Original Color
B47885

Protanomaly
99828B

Deuteranomaly
A28084

Tritanomaly
B47983

Monochromacy



Original Color
B47885

Achromatopsia
8B8B8B

Achromatomaly
9A8489

CSS Examples

Text

The CSS property to change the color of the text to Hex B47885 is called "color". The color property can be set on classes, ids or directly on the HTML element.

This example shows how text in the color #B47885 looks like.

```
.text, #text, p{  
  color:#B47885  
}
```

If you want to add a text shadow in that color use the text-shadow property, you can generate a text shadow directly with our [CSS Text Shadow Generator](#).

Here you see how black text with a 4 pixel #B47885 colored shadow looks like.

```
.shadow{ text-shadow: 4px 4px 2px #B47885
}
```

Border

The CSS property to change the border of an element to Hex B47885 is called "border". The border property can be set on classes, ids or directly on the HTML element.

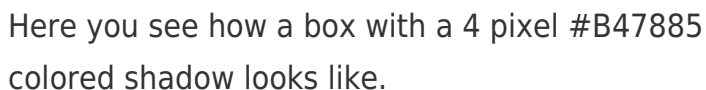
This example shows the color as border, it can be applied via the CSS property "border" or "border-color".

```
.border, #border, table{ border:4px solid
#B47885 }
```

If only the border color should be changed use the property `border-color`.

```
.border{ border-color:#B47885 }
```

If you want to add a box shadow in that color use:



Here you see how a box with a 4 pixel #B47885 colored shadow looks like.

```
.boxshadow{ -moz-box-shadow:4px 4px 4px  
4px #B47885; -webkit-box-shadow:4px 4px  
4px 4px #B47885; box-shadow:4px 4px 4px  
4px #B47885 }
```

Background

The CSS property to change the background color of an element to Hex B47885 is called "background". The background property can be set on classes, ids or directly on the HTML element.

```
.background, #background, body{  
background:#B47885 }
```

If only the background color should be changed can be used:

```
.background{ background-color:#B47885 }
```

This example shows the color as background, it is applied via the CSS property "background".

To optimize and compress your CSS code, you can use our [online CSS compressor and optimizer](#) based on csstidy. If you want to create a linear or radial gradient as background or border, check our [CSS Gradient Generator](#).

Hey! You found this booklet interesting? Support Converting Colors with the new Membership Option!

The pro membership hides all ads, plus gives you double the colors in the color bucket, and more awesome pro features!

[Learn more, Memberships starting at \\$2.50/m!](#)

**Follow me
on Twitter!**

@ConvertingColor