

# Converting Colors

Hex(B47952)

Have a look what the booklet for  
Hex(B47952) contains.

<b>Hex(B47952)</b> .....	3
<b><i>Conversions</i></b> .....	4
<b><i>Details</i></b> .....	6
<b><i>Harmonies</i></b> .....	11
<b><i>Previews</i></b> .....	23
<b><i>Color Blindness Simulation</i></b> .....	26
<b><i>CSS Examples</i></b> .....	29

**Color**

**Hex(B47952)**

# Conversions

## Conversions Part 1

<b>Format</b>	<b>Color</b>
Hex	B47952
RGB	180, 121, 82
RGB Percent	71%, 47%, 32%
CMY	0.2941, 0.5255, 0.6784
CMYK	0.00, 0.33, 0.54, 0.29
HSL	24°, 40%, 51%
HSV	24°, 54%, 71%
XYZ	27.1828, 23.9872, 11.1800
YIQ	134.1950, 47.6830, 0.3790

# Conversions

## Conversions Part 2

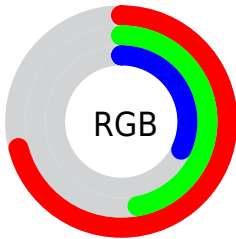
<b>Format</b>	<b>Color</b>
<b>R<sub>YB</sub></b>	180, 147, 82
Decimal	11827538
CIE <sub>Lab</sub>	56.08, 18.76, 30.61
CIE <sub>LCh</sub>	56, 35.902, 58.506
Yxy	23.9872, 0.4360, 0.3847
Android (android.graphics.Color)	4290017618 (0xFFB47952)
YUV	134.1950, -25.7321, 40.1710
Hunter-Lab	48.9768, 13.3605, 20.7496

# Details

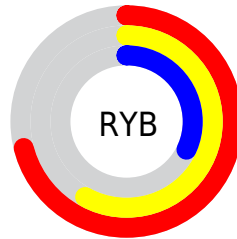
The Hex color **B47952** is a dark color, and the websafe version is hex **996633**. A complement of this color would be **528DB4**, and the grayscale version is **868686**.

A 20% lighter version of the original color is **EEAE84**, and **7C4824** is the 20% darker color. If you saturate the color by 10%, you get **B46E40**, and if you desaturate by 10%, it is **B48464**.

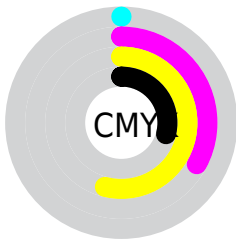
# Distribution



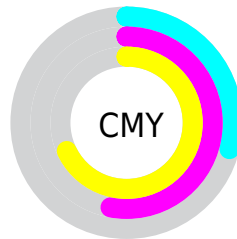
- Red (71%)
- Green (47%)
- Blue (32%)



- Red (71%)
- Yellow (58%)
- Blue (32%)



- Cyan (0%)
- Magenta (33%)
- Yellow (54%)
- Black (29%)



- Cyan (29%)
- Magenta (53%)
- Yellow (68%)

# Brightness & Saturation Gradients

These gradients show how the Hex color B47952 changes by changing the brightness by 10 percent. The first figure shows a shift by +10% for each color and the second figure -10%.

Similar to the brightness gradients but the following saturation gradients show a change of the Hex color B47952 by changing the saturation by 10% instead.



 B47952

 B47952

FFFFFF

 98603A

 EEAE84

 7C4824

 FFC99E

 61310E

 FFE5BA

 471B00

 FFFFD5

 2D0600

 FFFFF2

 050000

 000000

 B47952

 B47952

 B46E40

 B48464

 B4632E

 B48F76

 B4581C

 B49A88

 B44E0A

 B4A49A

 B44800

 B4AFAC

 B4BABE

 B4C5D0

 B4D0E2

 B4DBF4

# Harmonies

## Analogous

The Analogous color harmony consists of three colors that are next to each other on the color wheel.



C1706A



B47952



9B8447

# Triad

The Triadic color harmony groups three colors that are evenly spaced from another and form a triangle on the color wheel.



B47952



219784



877FBD

# Complementary

The Complementary color scheme is a pair of colors which are on the opposite of each other on the color wheel.



B47952



528DB4

# Split Complementary

Split-complementary colors differ from the complementary color scheme. The scheme consists of three colors, the original color and two neighbors of the complement color.



528AC4



B47952



0096A3

# Square

The Square scheme is like the rectangle color scheme, but the four colors are evenly spaced on the color wheel.



B47952



569465



0092BB



AC74A7

# Rectangle

The Rectangle color scheme consists of four colors that form a rectangle on the color wheel.



B47952



878B4A



0092BB



7783C1



# Sweetspot

The Sweet Spot groups the original color and five complimentary colors.



B47952



EBD4C5



B4528E



75685F



F5F5F5



757575



# Same Dimension

The Same Dimension uses a secret algorithm to generate beautiful new colors.



B47952



EB8F52



B4A952



595450



993D00



1A0A00



# Inverse Universe

The Inverse Universe completely reimagines the original color for something new.



528DB4



52AEEB



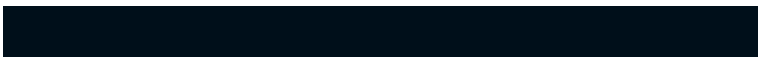
525DB4



505659



005C99

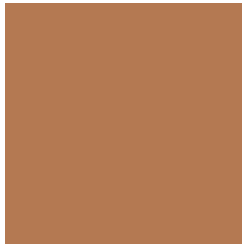


000F1A



# Previews

## White Background



This preview shows how the Hex color B47952 looks on a white background.

## Color Contrast Check

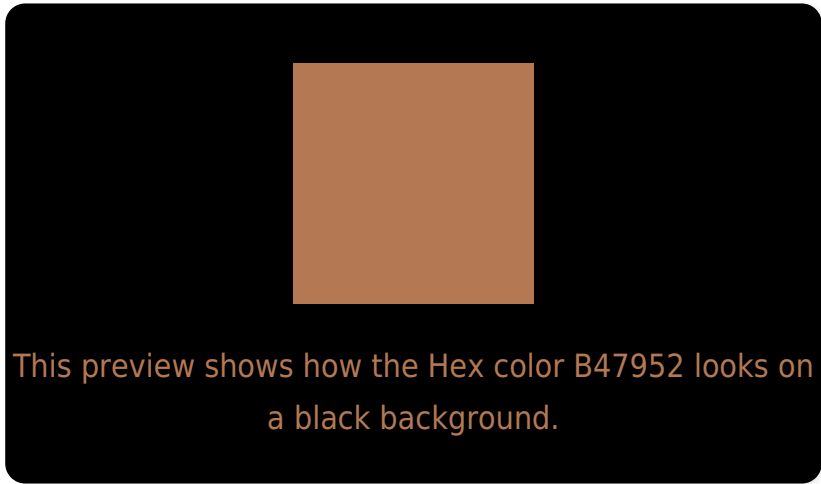
Large Text (above 18pt) WCAG AA ✓ Pass

Any Text WCAG AA × Fail

Large Text (above 18pt) WCAG AAA × Fail

Any Text WCAG AAA × Fail

# Black Background



## Color Contrast Check

Large Text (above 18pt) WCAG AA ✓ Pass

Any Text WCAG AA ✓ Pass

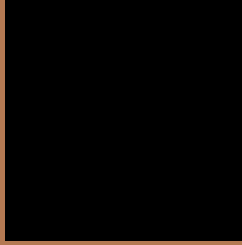
Large Text (above 18pt) WCAG AAA ✓ Pass

Any Text WCAG AAA × Fail

If you want to check with other color combinations, try the [Color Contrast Checker](#).



## Hex B47952 Background



This preview shows how black text looks on a background with the Hex color B47952.



This preview shows how white text looks on a background with the Hex color B47952.

# Color Blindness Simulation

Color vision deficiency is a very complex topic, and I could not describe the different causes any better than Wikipedia does, so if you want to learn more, you should check out their [article about color blindness](#).

## Dichromacy



**Original Color**  
B47952

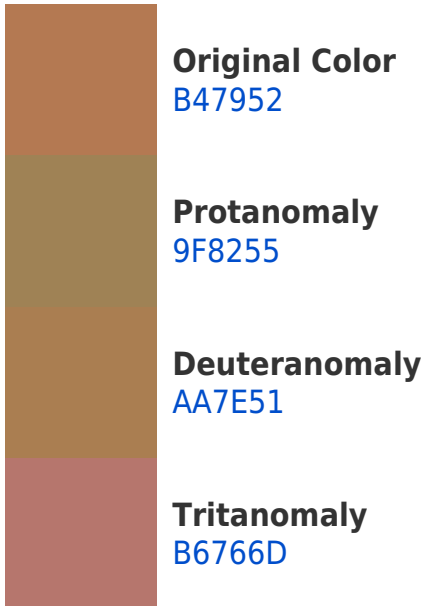
**Protanopia**  
938757

**Deuteranopia**  
A48150

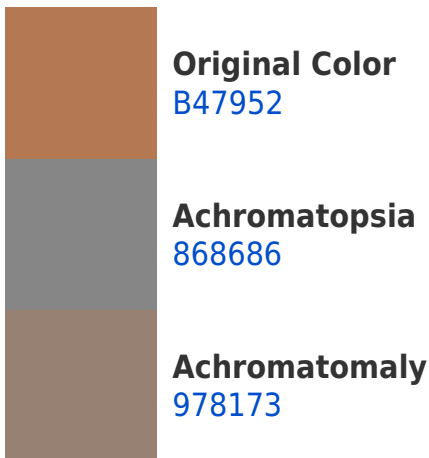


**Tritanopia**  
B7747C

# Trichromacy



# Monochromacy



# CSS Examples

## Text

The CSS property to change the color of the text to Hex B47952 is called "color". The color property can be set on classes, ids or directly on the HTML element.

This example shows how text in the color #B47952 looks like.

```
.text, #text, p{  
    color:#B47952  
}
```

If you want to add a text shadow in that color use the text-shadow property, you can generate a text shadow directly with our [CSS Text Shadow Generator](#).

Here you see how black text with a 4 pixel #B47952 colored shadow looks like.

```
.shadow{ text-shadow: 4px 4px 2px #B47952
}
```

## Border

The CSS property to change the border of an element to Hex B47952 is called "border". The border property can be set on classes, ids or directly on the HTML element.

This example shows the color as border, it can be applied via the CSS property "border" or "border-color".

```
.border, #border, table{ border:4px solid
#B47952 }
```

If only the border color should be changed use the property `border-color`.

```
.border{ border-color:#B47952 }
```

If you want to add a box shadow in that color use:

Here you see how a box with a 4 pixel #B47952 colored shadow looks like.

```
.boxshadow{ -moz-box-shadow:4px 4px 4px  
4px #B47952; -webkit-box-shadow:4px 4px  
4px 4px #B47952; box-shadow:4px 4px 4px  
4px #B47952 }
```

# Background

The CSS property to change the background color of an element to Hex B47952 is called "background". The background property can be set on classes, ids or directly on the HTML element.

```
.background, #background, body{  
background:#B47952 }
```

If only the background color should be changed can be used:

```
.background{ background-color:#B47952 }
```

This example shows the color as background, it is applied via the CSS property "background".

To optimize and compress your CSS code, you can use our [online CSS compressor and optimizer](#) based on csstidy. If you want to create a linear or radial gradient as background or border, check our [CSS Gradient Generator](#).



Hey! You found this booklet interesting? Support Converting Colors with the new Membership Option!

The pro membership hides all ads, plus gives you double the colors in the color bucket, and more awesome pro features!

**[Learn more, Memberships starting at \\$2.50/m!](#)**

**Follow me  
on Twitter!**

@ConvertingColor