

Converting Colors

Hex(B47B51)

Have a look what the booklet for
Hex(B47B51) contains.

Hex(B47B51)	3
<i>Conversions</i>	4
<i>Details</i>	6
<i>Harmonies</i>	11
<i>Previews</i>	23
<i>Color Blindness Simulation</i>	26
<i>CSS Examples</i>	29

Color

Hex(B47B51)

Conversions

Conversions Part 1

Format	Color
Hex	B47B51
RGB	180, 123, 81
RGB Percent	71%, 48%, 32%
CMY	0.2941, 0.5176, 0.6824
CMYK	0.00, 0.32, 0.55, 0.29
HSL	25°, 40%, 51%
HSV	25°, 55%, 71%
XYZ	27.3906, 24.4633, 11.0628
YIQ	135.2550, 47.4540, -0.9780

Conversions

Conversions Part 2

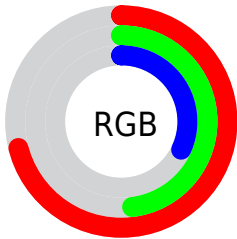
Format	Color
R_{YB}	180, 154, 81
Decimal	11828049
CIE _{Lab}	56.55, 17.55, 31.76
CIE _{LCh}	57, 36.286, 61.073
Yxy	24.4633, 0.4353, 0.3888
Android (android.graphics.Color)	4290018129 (0xFFB47B51)
YUV	135.2550, -26.7477, 39.2414
Hunter-Lab	49.4604, 12.2954, 21.3608

Details

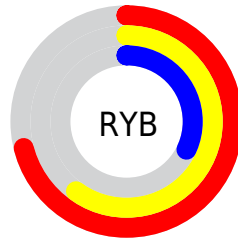
The Hex color **B47B51** is a dark color, and the websafe version is hex **996633**. A complement of this color would be **518AB4**, and the grayscale version is **878787**.

A 20% lighter version of the original color is **EEB083**, and **7C4A23** is the 20% darker color. If you saturate the color by 10%, you get **B4713F**, and if you desaturate by 10%, it is **B48563**.

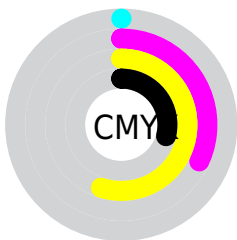
Distribution



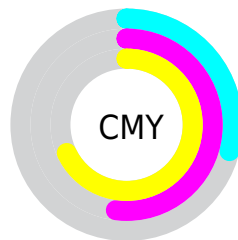
- Red (71%)
- Green (48%)
- Blue (32%)



- Red (71%)
- Yellow (60%)
- Blue (32%)



- Cyan (0%)
- Magenta (32%)
- Yellow (55%)
- Black (29%)



- Cyan (29%)
- Magenta (52%)
- Yellow (68%)

Brightness & Saturation Gradients

These gradients show how the Hex color B47B51 changes by changing the brightness by 10 percent. The first figure shows a shift by +10% for each color and the second figure -10%.

Similar to the brightness gradients but the following saturation gradients show a change of the Hex color B47B51 by changing the saturation by 10% instead.

 B47B51

 B47B51

FFFFFF

 986239

 EEB083

 7C4A23

 FFCB9D

 61330C

 FFE7B9

 471D00

 FFFFD4

 2D0800

 FFFFF1

 070000

 000000

 B47B51

 B47B51

 B4713F

 B48563

 B4662D

 B49075

 B45C1B

 B49A87

 B45209

 B4A499

 B44C00

 B4AFAB

 B4B9BD

 B4C4CF

 B4CEE1

 B4D8F3

Harmonies

Analogous

The Analogous color harmony consists of three colors that are next to each other on the color wheel.



C37169



B47B51



9A8647

Triad

The Triadic color harmony groups three colors that are evenly spaced from another and form a triangle on the color wheel.



B47B51



199888



8C7FBE

Complementary

The Complementary color scheme is a pair of colors which are on the opposite of each other on the color wheel.



B47B51



518AB4

Split Complementary

Split-complementary colors differ from the complementary color scheme. The scheme consists of three colors, the original color and two neighbors of the complement color.



588AC6



B47B51



0097A7

Square

The Square scheme is like the rectangle color scheme, but the four colors are evenly spaced on the color wheel.



B47B51



539568



0093BE



B074A7

Rectangle

The Rectangle color scheme consists of four colors that form a rectangle on the color wheel.



B47B51



858D4B



0093BE



7C83C2

Sweetspot

The Sweet Spot groups the original color and five complimentary colors.



B47B51



EBD4C3



B4518B



75685E



F5F5F5



757575

Same Dimension

The Same Dimension uses a secret algorithm to generate beautiful new colors.



B47B51



EB9150



B4AC51



595450



994100



1A0B00

Inverse Universe

The Inverse Universe completely reimagines the original color for something new.



518AB4



50A9EB



5159B4



505559



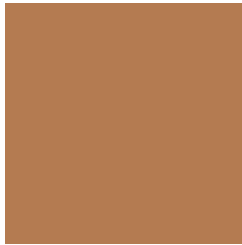
005899



000F1A

Previews

White Background



This preview shows how the Hex color B47B51 looks on a white background.

Color Contrast Check

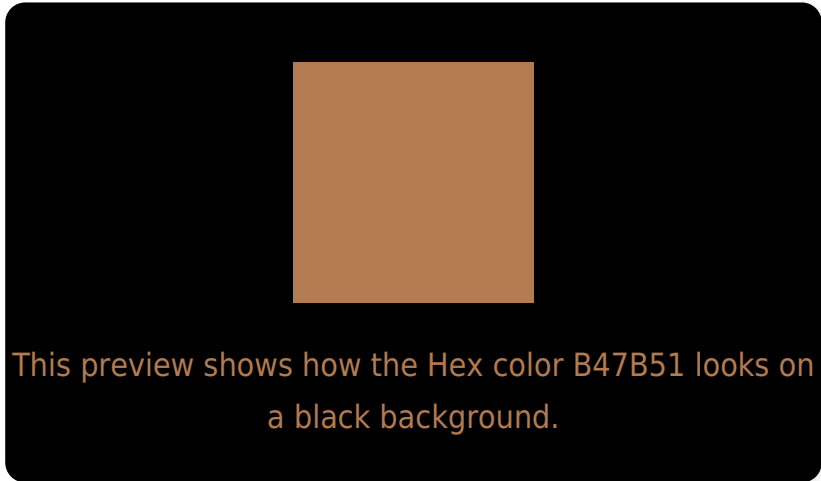
Large Text (above 18pt) WCAG AA ✓ Pass

Any Text WCAG AA × Fail

Large Text (above 18pt) WCAG AAA × Fail

Any Text WCAG AAA × Fail

Black Background



Color Contrast Check

Large Text (above 18pt) WCAG AA ✓ Pass

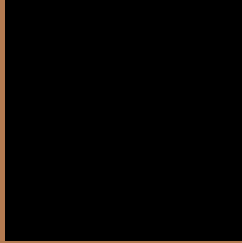
Any Text WCAG AA ✓ Pass

Large Text (above 18pt) WCAG AAA ✓ Pass

Any Text WCAG AAA × Fail

If you want to check with other color combinations, try the [Color Contrast Checker](#).

Hex B47B51 Background



This preview shows how black text looks on a background with the Hex color B47B51.



This preview shows how white text looks on a background with the Hex color B47B51.

Color Blindness Simulation

Color vision deficiency is a very complex topic, and I could not describe the different causes any better than Wikipedia does, so if you want to learn more, you should check out their [article about color blindness](#).

Dichromacy



Original Color
B47B51

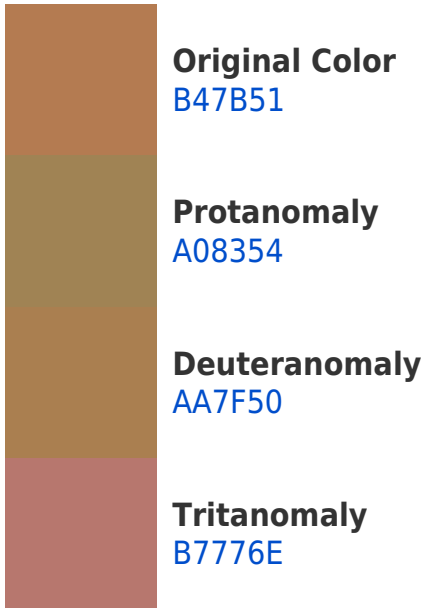
Protanopia
948856

Deuteranopia
A58250

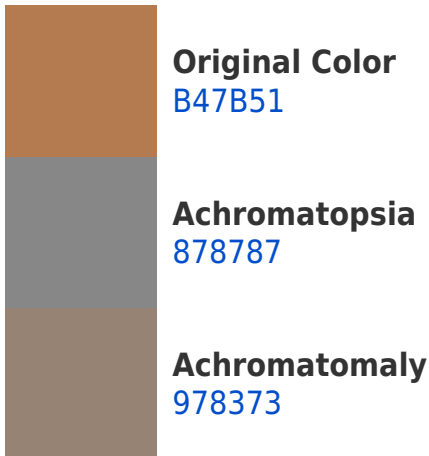


Tritanopia
B8757E

Trichromacy



Monochromacy



CSS Examples

Text

The CSS property to change the color of the text to Hex B47B51 is called "color". The color property can be set on classes, ids or directly on the HTML element.

This example shows how text in the color #B47B51 looks like.

```
.text, #text, p{  
    color:#B47B51  
}
```

If you want to add a text shadow in that color use the text-shadow property, you can generate a text shadow directly with our [CSS Text Shadow Generator](#).

Here you see how black text with a 4 pixel #B47B51 colored shadow looks like.

```
.shadow{ text-shadow: 4px 4px 2px #B47B51
}
```

Border

The CSS property to change the border of an element to Hex B47B51 is called "border". The border property can be set on classes, ids or directly on the HTML element.

This example shows the color as border, it can be applied via the CSS property "border" or "border-color".

```
.border, #border, table{ border:4px solid
#B47B51 }
```

If only the border color should be changed use the property `border-color`.

```
.border{ border-color:#B47B51 }
```

If you want to add a box shadow in that color use:

Here you see how a box with a 4 pixel #B47B51 colored shadow looks like.

```
.boxshadow{ -moz-box-shadow:4px 4px 4px  
4px #B47B51; -webkit-box-shadow:4px 4px  
4px 4px #B47B51; box-shadow:4px 4px 4px  
4px #B47B51 }
```

Background

The CSS property to change the background color of an element to Hex B47B51 is called "background". The background property can be set on classes, ids or directly on the HTML element.

```
.background, #background, body{  
background:#B47B51 }
```

If only the background color should be changed can be used:

```
.background{ background-color:#B47B51 }
```

This example shows the color as background, it is applied via the CSS property "background".

To optimize and compress your CSS code, you can use our [online CSS compressor and optimizer](#) based on csstidy. If you want to create a linear or radial gradient as background or border, check our [CSS Gradient Generator](#).

Hey! You found this booklet interesting? Support Converting Colors with the new Membership Option!

The pro membership hides all ads, plus gives you double the colors in the color bucket, and more awesome pro features!

[Learn more, Memberships starting at \\$2.50/m!](#)

**Follow me
on Twitter!**

@ConvertingColor