

# Converting Colors

Hex(B47D7F)

Have a look what the booklet for  
Hex(B47D7F) contains.

<b>Hex(B47D7F)</b> .....	3
<b><i>Conversions</i></b> .....	4
<b><i>Details</i></b> .....	6
<b><i>Harmonies</i></b> .....	11
<b><i>Previews</i></b> .....	23
<b><i>Color Blindness Simulation</i></b> .....	26
<b><i>CSS Examples</i></b> .....	29

# Color

Hex(**B47D7F**)

# Conversions

## Conversions Part 1

<b>Format</b>	<b>Color</b>
Hex	<b>B47D7F</b>
RGB	<b>180, 125, 127</b>
RGB Percent	<b>71%, 49%, 50%</b>
CMY	<b>0.2941, 0.5098, 0.5020</b>
CMYK	<b>0.00, 0.31, 0.29, 0.29</b>
HSL	<b>358°, 27%, 60%</b>
HSV	<b>358°, 31%, 71%</b>
XYZ	<b>29.9868, 25.9028, 23.4979</b>
YIQ	<b>141.6730, 32.1380, 12.2820</b>

# Conversions

## Conversions Part 2

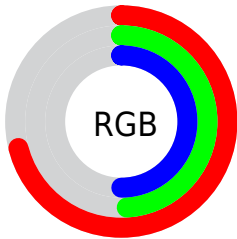
<b>Format</b>	<b>Color</b>
<b>RYB</b>	180, 125, 127
Decimal	11828607
CIELab	57.94, 21.66, 7.53
CIELCh	58, 22.926, 19.165
Yxy	25.9028, 0.3777, 0.3263
Android (android.graphics.Color)	4290018687 (0xFFB47D7F)
YUV	141.6730, -7.2338, 33.6128
Hunter-Lab	50.8948, 16.1046, 8.2524

# Details

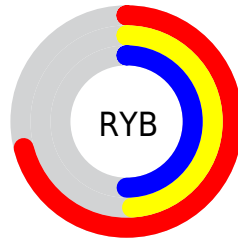
The Hex color **B47D7F** is a dark color, and the websafe version is hex **996666**. A complement of this color would be **7DB4B2**, and the grayscale version is **8E8E8E**.

A 20% lighter version of the original color is **EDB2B4**, and **7E4B4E** is the 20% darker color. If you saturate the color by 10%, you get **B46B6E**, and if you desaturate by 10%, it is **B48F90**.

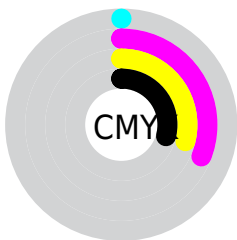
# Distribution



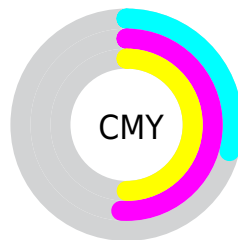
- Red (71%)
- Green (49%)
- Blue (50%)



- Red (71%)
- Yellow (49%)
- Blue (50%)



- Cyan (0%)
- Magenta (31%)
- Yellow (29%)
- Black (29%)



- Cyan (29%)
- Magenta (51%)
- Yellow (50%)

# Brightness & Saturation Gradients

These gradients show how the Hex color B47D7F changes by changing the brightness by 10 percent. The first figure shows a shift by +10% for each color and the second figure -10%.

Similar to the brightness gradients but the following saturation gradients show a change of the Hex color B47D7F by changing the saturation by 10% instead.



 B47D7F

 B47D7F

FFFFFF

 996466

 EDB2B4

 7E4B4E

 FFCECF

 643437

 FFEAEB

 4A1E22

 32080C

 1A0001

 000000

 B47D7F

 B47D7F

 B46B6E

 B48F90

 B4595C

 B4A1A2

 B4474B

 B4B3B3

 B4353A

 B4C5C4

 B42328

 B4D7D6

 B41117

 B4E9E7

 B40007

 B4FBF8

 B4FFFF

# Harmonies

## Analogous

The Analogous color harmony consists of three colors that are next to each other on the color wheel.



AE7D93



B47D7F



AF816E

# Triad

The Triadic color harmony groups three colors that are evenly spaced from another and form a triangle on the color wheel.



B47D7F



769371



688FB2

# Complementary

The Complementary color scheme is a pair of colors which are on the opposite of each other on the color wheel.



B47D7F



7DB4B2

# Split Complementary

Split-complementary colors differ from the complementary color scheme. The scheme consists of three colors, the original color and two neighbors of the complement color.



5394A9



B47D7F



5F9683

# Square

The Square scheme is like the rectangle color scheme, but the four colors are evenly spaced on the color wheel.



B47D7F



8C8E65



509698



8489B1

# Rectangle

The Rectangle color scheme consists of four colors that form a rectangle on the color wheel.



B47D7F



A68566



509698



6091B0



# Sweetspot

The Sweet Spot groups the original color and five complimentary colors.



B47D7F



EBD5D6



B17DB4



756869



F5F5F5



757575



# Same Dimension

The Same Dimension uses a secret algorithm to generate beautiful new colors.



B47D7F



EB9497



B4967D



595051



990006



1A0001



# Inverse Universe

The Inverse Universe completely reimagines the original color for something new.



B47D7F



EB9497



7D9BB4



595051



990006

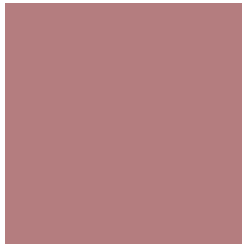


1A0001



# Previews

## White Background



This preview shows how the Hex color B47D7F looks on a white background.

## Color Contrast Check

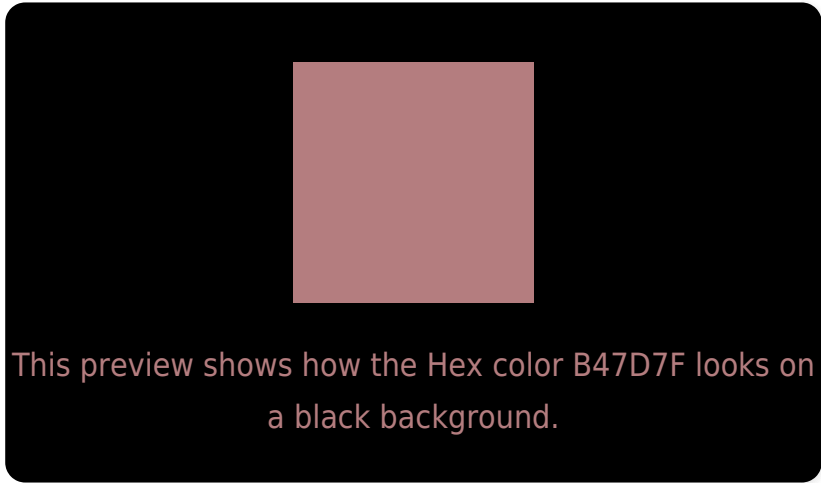
Large Text (above 18pt) WCAG AA ✓ Pass

Any Text WCAG AA ✗ Fail

Large Text (above 18pt) WCAG AAA ✗ Fail

Any Text WCAG AAA ✗ Fail

# Black Background



## Color Contrast Check

Large Text (above 18pt) WCAG AA ✓ Pass

Any Text WCAG AA ✓ Pass

Large Text (above 18pt) WCAG AAA ✓ Pass

Any Text WCAG AAA × Fail

If you want to check with other color combinations, try the [Color Contrast Checker](#).



## Hex B47D7F Background



This preview shows how black text looks on a background with the Hex color B47D7F.



This preview shows how white text looks on a background with the Hex color B47D7F.

# Color Blindness Simulation

Color vision deficiency is a very complex topic, and I could not describe the different causes any better than Wikipedia does, so if you want to learn more, you should check out their [article about color blindness](#).

## Dichromacy



**Original Color**  
B47D7F

**Protanopia**  
8F8B87

**Deuteranopia**  
9E877D



**Tritanopia**  
B57C85

# Trichromacy



**Original Color**  
B47D7F

**Protanomaly**  
9C8684

**Deuteranomaly**  
A6837E

**Tritanomaly**  
B57C83

# Monochromacy



**Original Color**  
B47D7F

**Achromatopsia**  
8E8E8E

**Achromatomaly**  
9C8889

# CSS Examples

## Text

The CSS property to change the color of the text to Hex B47D7F is called "color". The color property can be set on classes, ids or directly on the HTML element.

This example shows how text in the color #B47D7F looks like.

```
.text, #text, p{  
    color:#B47D7F  
}
```

If you want to add a text shadow in that color use the text-shadow property, you can generate a text shadow directly with our [CSS Text Shadow Generator](#).

Here you see how black text with a 4 pixel #B47D7F colored shadow looks like.

```
.shadow{ text-shadow: 4px 4px 2px #B47D7F
}
```

## Border

The CSS property to change the border of an element to Hex B47D7F is called "border". The border property can be set on classes, ids or directly on the HTML element.

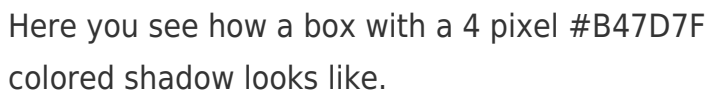
This example shows the color as border, it can be applied via the CSS property "border" or "border-color".

```
.border, #border, table{ border:4px solid
#B47D7F }
```

If only the border color should be changed use the property `border-color`.

```
.border{ border-color:#B47D7F }
```

If you want to add a box shadow in that color use:



Here you see how a box with a 4 pixel #B47D7F colored shadow looks like.

```
.boxshadow{ -moz-box-shadow:4px 4px 4px  
4px #B47D7F; -webkit-box-shadow:4px 4px  
4px 4px #B47D7F; box-shadow:4px 4px 4px  
4px #B47D7F }
```

# Background

The CSS property to change the background color of an element to Hex B47D7F is called "background". The background property can be set on classes, ids or directly on the HTML element.

```
.background, #background, body{  
background:#B47D7F }
```

If only the background color should be changed can be used:

```
.background{ background-color:#B47D7F }
```

This example shows the color as background, it is applied via the CSS property "background".

To optimize and compress your CSS code, you can use our [online CSS compressor and optimizer](#) based on csstidy. If you want to create a linear or radial gradient as background or border, check our [CSS Gradient Generator](#).



Hey! You found this booklet interesting? Support Converting Colors with the new Membership Option!

The pro membership hides all ads, plus gives you double the colors in the color bucket, and more awesome pro features!

**[Learn more, Memberships starting at \\$2.50/m!](#)**

**Follow me  
on Twitter!**

@ConvertingColor