

Converting Colors

Hex(B47E7E)

Have a look what the booklet for
Hex(B47E7E) contains.

Hex(B47E7E)	3
<i>Conversions</i>	4
<i>Details</i>	6
<i>Harmonies</i>	11
<i>Previews</i>	23
<i>Color Blindness Simulation</i>	26
<i>CSS Examples</i>	29

Color

Hex(B47E7E)

Conversions

Conversions Part 1

Format	Color
Hex	B47E7E
RGB	180, 126, 126
RGB Percent	71%, 49%, 49%
CMY	0.2941, 0.5059, 0.5059
CMYK	0.00, 0.30, 0.30, 0.29
HSL	0°, 26%, 60%
HSV	0°, 30%, 71%
XYZ	30.0491, 26.1314, 23.1988
YIQ	142.1460, 32.1840, 11.4480

Conversions

Conversions Part 2

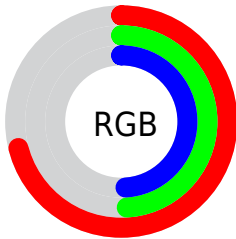
Format	Color
RYB	180, 126, 126
Decimal	11828862
CIELab	58.16, 20.96, 8.41
CIELCh	58, 22.582, 21.869
Yxy	26.1314, 0.3786, 0.3292
Android (android.graphics.Color)	4290018942 (0xFFB47E7E)
YUV	142.1460, -7.9600, 33.1980
Hunter-Lab	51.1188, 15.4695, 8.8762

Details

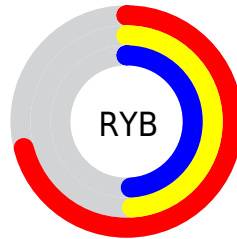
The Hex color **B47E7E** is a dark color, and the websafe version is hex **996666**. A complement of this color would be **7EB4B4**, and the grayscale version is **8E8E8E**.

A 20% lighter version of the original color is **EDB3B3**, and **7E4C4D** is the 20% darker color. If you saturate the color by 10%, you get **B46C6C**, and if you desaturate by 10%, it is **B49090**.

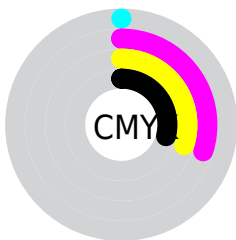
Distribution



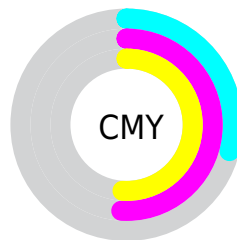
- Red (71%)
- Green (49%)
- Blue (49%)



- Red (71%)
- Yellow (49%)
- Blue (49%)



- Cyan (0%)
- Magenta (30%)
- Yellow (30%)
- Black (29%)



- Cyan (29%)
- Magenta (51%)
- Yellow (51%)

Brightness & Saturation Gradients

These gradients show how the Hex color B47E7E changes by changing the brightness by 10 percent. The first figure shows a shift by +10% for each color and the second figure -10%.

Similar to the brightness gradients but the following saturation gradients show a change of the Hex color B47E7E by changing the saturation by 10% instead.

 B47E7E

 B47E7E

FFFFFF

 996565

 EDB3B3

 7E4C4D

 FFCFCE

 643536

 FFEBEA

 4A1F21

 32090A

 1A0001

 000000

 B47E7E

 B47E7E

 B46C6C

 B49090

 B45A5A

 B4A2A2

 B44848

 B4B4B4

 B43636

 B4C6C6

 B42424

 B4D8D8

 B41212

 B4EAEA

 B40000

 B4FCFC

 B4FFFF

Harmonies

Analogous

The Analogous color harmony consists of three colors that are next to each other on the color wheel.



AF7E92



B47E7E



AE826E

Triad

The Triadic color harmony groups three colors that are evenly spaced from another and form a triangle on the color wheel.



B47E7E



749473



6C8FB2

Complementary

The Complementary color scheme is a pair of colors which are on the opposite of each other on the color wheel.



B47E7E



7EB4B4

Split Complementary

Split-complementary colors differ from the complementary color scheme. The scheme consists of three colors, the original color and two neighbors of the complement color.



5694AA



B47E7E



5F9786

Square

The Square scheme is like the rectangle color scheme, but the four colors are evenly spaced on the color wheel.



B47E7E



8B8F67



51979A



8889B0

Rectangle

The Rectangle color scheme consists of four colors that form a rectangle on the color wheel.



B47E7E



A58667



51979A



6391B1

Sweetspot

The Sweet Spot groups the original color and five complimentary colors.



B47E7E



EBD5D5



B47EB4



756868



F5F5F5



757575

Same Dimension

The Same Dimension uses a secret algorithm to generate beautiful new colors.



B47E7E



EB9696



B4997E



595050



990000



1A0000

Inverse Universe

The Inverse Universe completely reimagines the original color for something new.



7EB4B4



96EBEB



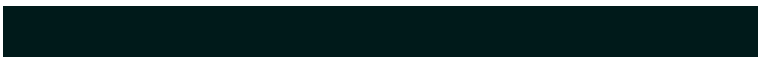
7E99B4



505959



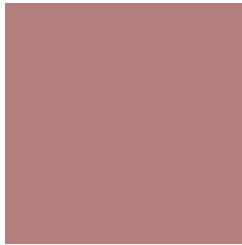
009999



001A1A

Previews

White Background



This preview shows how the Hex color B47E7E looks on a white background.

Color Contrast Check

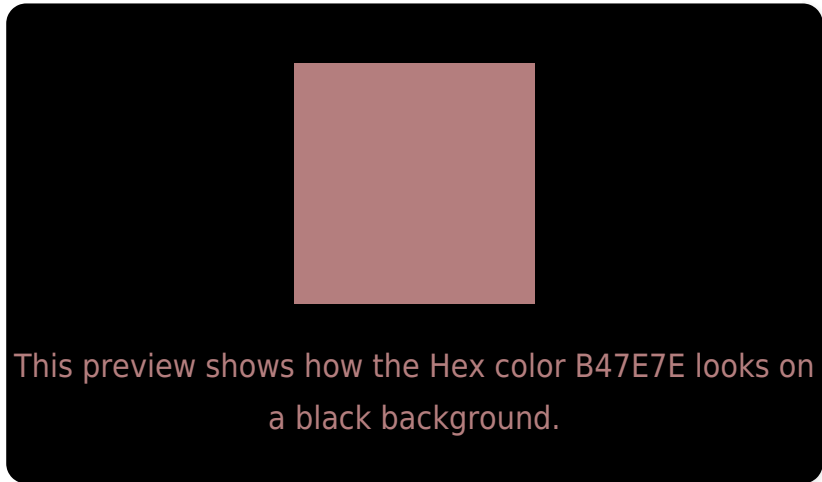
Large Text (above 18pt) WCAG AA ✓ Pass

Any Text WCAG AA × Fail

Large Text (above 18pt) WCAG AAA × Fail

Any Text WCAG AAA × Fail

Black Background



Color Contrast Check

Large Text (above 18pt) WCAG AA ✓ Pass

Any Text WCAG AA ✓ Pass

Large Text (above 18pt) WCAG AAA ✓ Pass

Any Text WCAG AAA × Fail

If you want to check with other color combinations, try the [Color Contrast Checker](#).

Hex B47E7E Background



This preview shows how black text looks on a background with the Hex color B47E7E.



This preview shows how white text looks on a background with the Hex color B47E7E.

Color Blindness Simulation

Color vision deficiency is a very complex topic, and I could not describe the different causes any better than Wikipedia does, so if you want to learn more, you should check out their [article about color blindness](#).


Dichromacy



Original Color
B47E7E

Protanopia
908C85

Deuteranopia
9F877C



Tritanopia
B57D86

Trichromacy



Original Color
B47E7E

Protanomaly
9D8782

Deuteranomaly
A7847D

Tritanomaly
B57D83

Monochromacy



Original Color
B47E7E

Achromatopsia
8E8E8E

Achromatomaly
9C8888

CSS Examples

Text

The CSS property to change the color of the text to Hex B47E7E is called "color". The color property can be set on classes, ids or directly on the HTML element.

This example shows how text in the color #B47E7E looks like.

```
.text, #text, p{  
    color:#B47E7E  
}
```

If you want to add a text shadow in that color use the text-shadow property, you can generate a text shadow directly with our [CSS Text Shadow Generator](#).

Here you see how black text with a 4 pixel #B47E7E colored shadow looks like.

```
.shadow{ text-shadow: 4px 4px 2px #B47E7E
}
```

Border

The CSS property to change the border of an element to Hex B47E7E is called "border". The border property can be set on classes, ids or directly on the HTML element.

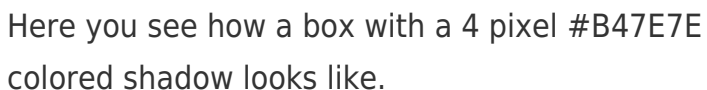
This example shows the color as border, it can be applied via the CSS property "border" or "border-color".

```
.border, #border, table{ border:4px solid
#B47E7E }
```

If only the border color should be changed use the property `border-color`.

```
.border{ border-color:#B47E7E }
```

If you want to add a box shadow in that color use:



Here you see how a box with a 4 pixel `#B47E7E` colored shadow looks like.

```
.boxshadow{ -moz-box-shadow:4px 4px 4px  
4px #B47E7E; -webkit-box-shadow:4px 4px  
4px 4px #B47E7E; box-shadow:4px 4px 4px  
4px #B47E7E }
```

Background

The CSS property to change the background color of an element to Hex B47E7E is called "background". The background property can be set on classes, ids or directly on the HTML element.

```
.background, #background, body{  
background:#B47E7E }
```

If only the background color should be changed can be used:

```
.background{ background-color:#B47E7E }
```

This example shows the color as background, it is applied via the CSS property "background".

To optimize and compress your CSS code, you can use our [online CSS compressor and optimizer](#) based on csstidy. If you want to create a linear or radial gradient as background or border, check our [CSS Gradient Generator](#).

Hey! You found this booklet interesting? Support Converting Colors with the new Membership Option!

The pro membership hides all ads, plus gives you double the colors in the color bucket, and more awesome pro features!

[Learn more, Memberships starting at \\$2.50/m!](#)

**Follow me
on Twitter!**

@ConvertingColor