

Converting Colors

Hex(B47F83)

Have a look what the booklet for
Hex(B47F83) contains.

Hex(B47F83)	3
<i>Conversions</i>	4
<i>Details</i>	6
<i>Harmonies</i>	11
<i>Previews</i>	23
<i>Color Blindness Simulation</i>	26
<i>CSS Examples</i>	29

Color

Hex(B47F83)

Conversions

Conversions Part 1

Format	Color
Hex	B47F83
RGB	180, 127, 131
RGB Percent	71%, 50%, 51%
CMY	0.2941, 0.5020, 0.4863
CMYK	0.00, 0.29, 0.27, 0.29
HSL	355°, 26%, 60%
HSV	355°, 29%, 71%
XYZ	30.5085, 26.5207, 24.9838
YIQ	143.3030, 30.3040, 12.4800

Conversions

Conversions Part 2

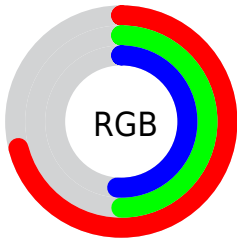
Format	Color
R_{YB}	180, 127, 131
Decimal	11829123
CIE _{Lab}	58.53, 21.10, 6.05
CIE _{LCh}	59, 21.955, 16.009
Yxy	26.5207, 0.3720, 0.3234
Android (android.graphics.Color)	4290019203 (0xFFB47F83)
YUV	143.3030, -6.0654, 32.1833
Hunter-Lab	51.4983, 15.6246, 7.2850

Details

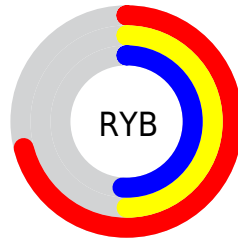
The Hex color **B47F83** is a dark color, and the websafe version is hex **CC9999**. A complement of this color would be **7FB4B0**, and the grayscale version is **8F8F8F**.

A 20% lighter version of the original color is **EDB4B8**, and **7E4D52** is the 20% darker color. If you saturate the color by 10%, you get **B46D72**, and if you desaturate by 10%, it is **B49194**.

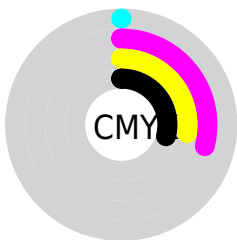
Distribution



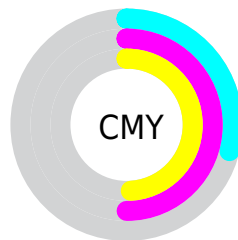
- Red (71%)
- Green (50%)
- Blue (51%)



- Red (71%)
- Yellow (50%)
- Blue (51%)



- Cyan (0%)
- Magenta (29%)
- Yellow (27%)
- Black (29%)



- Cyan (29%)
- Magenta (50%)
- Yellow (49%)

Brightness & Saturation Gradients

These gradients show how the Hex color B47F83 changes by changing the brightness by 10 percent. The first figure shows a shift by +10% for each color and the second figure -10%.

Similar to the brightness gradients but the following saturation gradients show a change of the Hex color B47F83 by changing the saturation by 10% instead.

 B47F83

 B47F83

FFFFFF

 99666A

 EDB4B8

 7E4D52

 FFD0D4

 64363B

 FFECF0

 4B2025

 330A10

 1C0001

 000000

 B47F83

 B47F83

 B46D72

 B49194

 B45B62

 B4A3A4

 B44951

 B4B5B5

 B43740

 B4C7C6

 B42530

 B4D9D6

 B4131F

 B4EBE7

 B4010F

 B4FDF7

 B4000E

 B4FFFF

Harmonies

Analogous

The Analogous color harmony consists of three colors that are next to each other on the color wheel.



AD8097



B47F83



B08272

Triad

The Triadic color harmony groups three colors that are evenly spaced from another and form a triangle on the color wheel.



B47F83



7A9472



6991B2

Complementary

The Complementary color scheme is a pair of colors which are on the opposite of each other on the color wheel.



B47F83



7FB4B0

Split Complementary

Split-complementary colors differ from the complementary color scheme. The scheme consists of three colors, the original color and two neighbors of the complement color.



5796A8



B47F83



659783

Square

The Square scheme is like the rectangle color scheme, but the four colors are evenly spaced on the color wheel.



B47F83



908F68



569897



848BB1

Rectangle

The Rectangle color scheme consists of four colors that form a rectangle on the color wheel.



B47F83



A8866A



569897



6193AF

Sweetspot

The Sweet Spot groups the original color and five complimentary colors.



B47F83



EBD5D7



B07FB4



756869



F5F5F5



757575

Same Dimension

The Same Dimension uses a secret algorithm to generate beautiful new colors.



B47F83



EB989F



B4957F



595051



99000C



1A0002

Inverse Universe

The Inverse Universe completely reimagines the original color for something new.



B47F83



EB989F



7F9EB4



595051



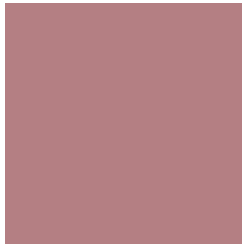
99000C



1A0002

Previews

White Background



This preview shows how the Hex color B47F83 looks on a white background.

Color Contrast Check

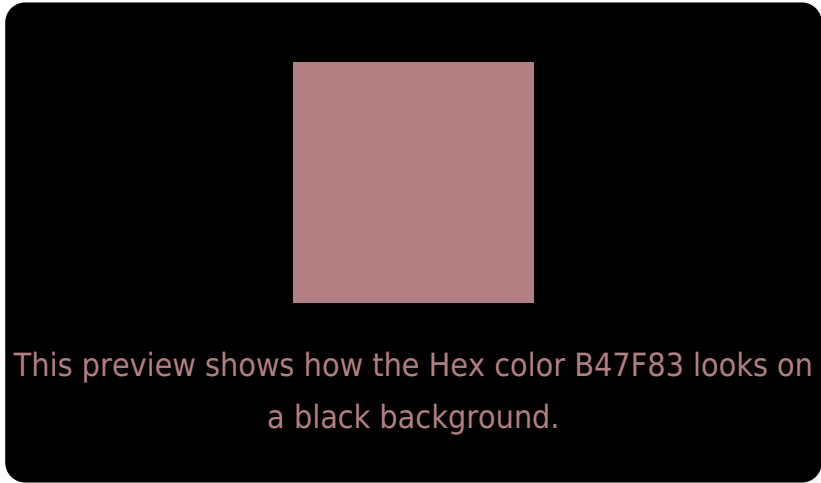
Large Text (above 18pt) WCAG AA ✓ Pass

Any Text WCAG AA ✗ Fail

Large Text (above 18pt) WCAG AAA ✗ Fail

Any Text WCAG AAA ✗ Fail

Black Background



Color Contrast Check

Large Text (above 18pt) WCAG AA ✓ Pass

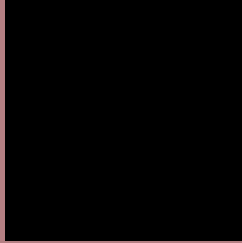
Any Text WCAG AA ✓ Pass

Large Text (above 18pt) WCAG AAA ✓ Pass

Any Text WCAG AAA × Fail

If you want to check with other color combinations, try the [Color Contrast Checker](#).

Hex B47F83 Background



This preview shows how black text looks on a background with the Hex color B47F83.



This preview shows how white text looks on a background with the Hex color B47F83.

Color Blindness Simulation

Color vision deficiency is a very complex topic, and I could not describe the different causes any better than Wikipedia does, so if you want to learn more, you should check out their [article about color blindness](#).

Dichromacy



Original Color
B47F83

Protanopia
908C8A

Deuteranopia
9F8881



Tritanopia
B57E88

Trichromacy



Original Color
B47F83

Protanomaly
9D8787

Deuteranomaly
A78582

Tritanomaly
B57E86

Monochromacy



Original Color
B47F83

Achromatopsia
8F8F8F

Achromatomaly
9C898B

CSS Examples

Text

The CSS property to change the color of the text to Hex B47F83 is called "color". The color property can be set on classes, ids or directly on the HTML element.

This example shows how text in the color #B47F83 looks like.

```
.text, #text, p{  
    color:#B47F83  
}
```

If you want to add a text shadow in that color use the text-shadow property, you can generate a text shadow directly with our [CSS Text Shadow Generator](#).

Here you see how black text with a 4 pixel #B47F83 colored shadow looks like.

```
.shadow{ text-shadow: 4px 4px 2px #B47F83
}
```

Border

The CSS property to change the border of an element to Hex B47F83 is called "border". The border property can be set on classes, ids or directly on the HTML element.

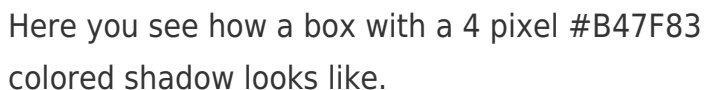
This example shows the color as border, it can be applied via the CSS property "border" or "border-color".

```
.border, #border, table{ border:4px solid
#B47F83 }
```

If only the border color should be changed use the property `border-color`.

```
.border{ border-color:#B47F83 }
```

If you want to add a box shadow in that color use:



Here you see how a box with a 4 pixel #B47F83 colored shadow looks like.

```
.boxshadow{ -moz-box-shadow:4px 4px 4px  
4px #B47F83; -webkit-box-shadow:4px 4px  
4px 4px #B47F83; box-shadow:4px 4px 4px  
4px #B47F83 }
```

Background

The CSS property to change the background color of an element to Hex B47F83 is called "background". The background property can be set on classes, ids or directly on the HTML element.

```
.background, #background, body{  
background:#B47F83 }
```

If only the background color should be changed can be used:

```
.background{ background-color:#B47F83 }
```

This example shows the color as background, it is applied via the CSS property "background".

To optimize and compress your CSS code, you can use our [online CSS compressor and optimizer](#) based on csstidy. If you want to create a linear or radial gradient as background or border, check our [CSS Gradient Generator](#).

Hey! You found this booklet interesting? Support Converting Colors with the new Membership Option!

The pro membership hides all ads, plus gives you double the colors in the color bucket, and more awesome pro features!

[Learn more, Memberships starting at \\$2.50/m!](#)

**Follow me
on Twitter!**

@ConvertingColor