

Converting Colors

Hex(B47F8D)

Have a look what the booklet for
Hex(B47F8D) contains.

Hex(B47F8D)	3
<i>Conversions</i>	4
<i>Details</i>	6
<i>Harmonies</i>	11
<i>Previews</i>	23
<i>Color Blindness Simulation</i>	26
<i>CSS Examples</i>	29

Color

Hex(B47F8D)

Conversions

Conversions Part 1

Format	Color
Hex	B47F8D
RGB	180, 127, 141
RGB Percent	71%, 50%, 55%
CMY	0.2941, 0.5020, 0.4471
CMYK	0.00, 0.29, 0.22, 0.29
HSL	344°, 26%, 60%
HSV	344°, 29%, 71%
XYZ	31.2195, 26.8051, 28.7278
YIQ	144.4430, 27.0940, 15.5900

Conversions

Conversions Part 2

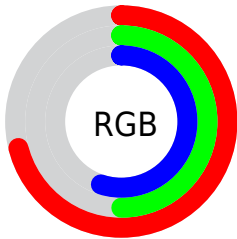
Format	Color
R_{YB}	180, 127, 141
Decimal	11829133
CIE _{Lab}	58.79, 22.60, 0.68
CIE _{LCh}	59, 22.608, 1.720
Yxy	26.8051, 0.3599, 0.3090
Android (android.graphics.Color)	4290019213 (0xFFB47F8D)
YUV	144.4430, -1.6974, 31.1835
Hunter-Lab	51.7737, 17.0314, 3.3432

Details

The Hex color **B47F8D** is a dark color, and the websafe version is hex **CC9999**. A complement of this color would be **7FB4A6**, and the grayscale version is **909090**.

A 20% lighter version of the original color is **EDB4C3**, and **7E4D5B** is the 20% darker color. If you saturate the color by 10%, you get **B46D80**, and if you desaturate by 10%, it is **B4919A**.

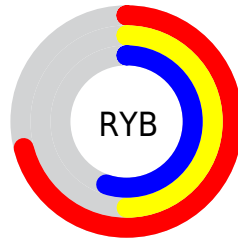
Distribution



Red (71%)

Green (50%)

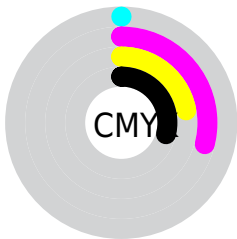
Blue (55%)



Red (71%)

Yellow (50%)

Blue (55%)

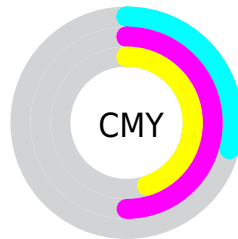


Cyan (0%)

Magenta (29%)

Yellow (22%)

Black (29%)



Cyan (29%)

Magenta (50%)

Yellow (45%)

Brightness & Saturation Gradients

These gradients show how the Hex color B47F8D changes by changing the brightness by 10 percent. The first figure shows a shift by +10% for each color and the second figure -10%.

Similar to the brightness gradients but the following saturation gradients show a change of the Hex color B47F8D by changing the saturation by 10% instead.



B47F8D



B47F8D

FFFFFF



996673



EDB4C3



7E4D5B



FFD0DE



643644



FFECFB



4B1F2D



330919



1F0001



000000



B47F8D



B47F8D



B46D80



B4919A

 B45B73

 B4A3A7

 B44965

 B4B5B5

 B43758

 B4C7C2

 B4254B

 B4D9CF

 B4133E

 B4EBDC

 B40130

 B4FDEA

 B40030

 B4FFF7

 B4FFFF

Harmonies

Analogous

The Analogous color harmony consists of three colors that are next to each other on the color wheel.



A882A1



B47F8D



B5817A

Triad

The Triadic color harmony groups three colors that are evenly spaced from another and form a triangle on the color wheel.



B47F8D



85936B



5D95B0

Complementary

The Complementary color scheme is a pair of colors which are on the opposite of each other on the color wheel.



B47F8D



7FB4A6

Split Complementary

Split-complementary colors differ from the complementary color scheme. The scheme consists of three colors, the original color and two neighbors of the complement color.



5298A2



B47F8D



6F977A

Square

The Square scheme is like the rectangle color scheme, but the four colors are evenly spaced on the color wheel.



B47F8D



9B8D66



5B998E



768FB5

Rectangle

The Rectangle color scheme consists of four colors that form a rectangle on the color wheel.



B47F8D



B0846F



5B998E



5796AC

Sweetspot

The Sweet Spot groups the original color and five complimentary colors.



B47F8D



EBD5DB



A67FB4



75686C



F5F5F5



757575

Same Dimension

The Same Dimension uses a secret algorithm to generate beautiful new colors.



B47F8D



EB98AE



B48B7F



595053



990028



1A0007

Inverse Universe

The Inverse Universe completely reimagines the original color for something new.



B47F8D



EB98AE



7FA8B4



595053



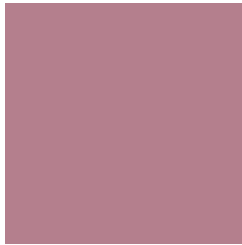
990028



1A0007

Previews

White Background



This preview shows how the Hex color B47F8D looks on a white background.

Color Contrast Check

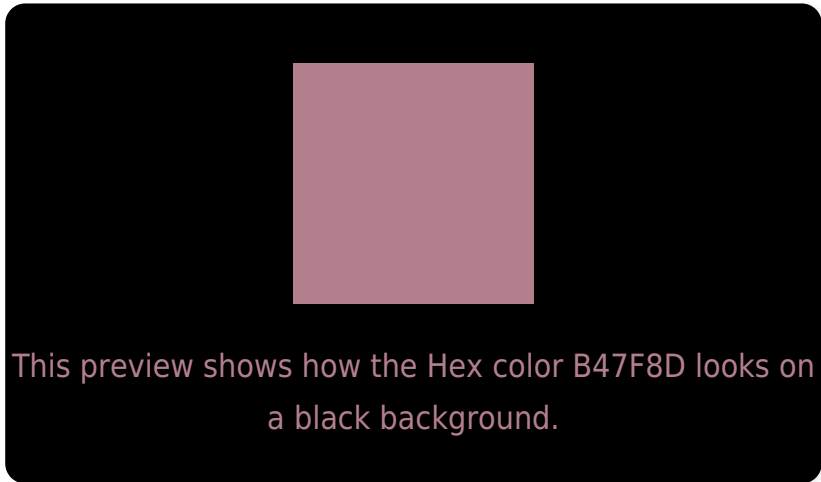
Large Text (above 18pt) WCAG AA ✓ Pass

Any Text WCAG AA ✗ Fail

Large Text (above 18pt) WCAG AAA ✗ Fail

Any Text WCAG AAA ✗ Fail

Black Background



Color Contrast Check

Large Text (above 18pt) WCAG AA ✓ Pass

Any Text WCAG AA ✓ Pass

Large Text (above 18pt) WCAG AAA ✓ Pass

Any Text WCAG AAA × Fail

If you want to check with other color combinations, try the [Color Contrast Checker](#).

Hex B47F8D Background



This preview shows how black text looks on a background with the Hex color B47F8D.



This preview shows how white text looks on a background with the Hex color B47F8D.

Color Blindness Simulation

Color vision deficiency is a very complex topic, and I could not describe the different causes any better than Wikipedia does, so if you want to learn more, you should check out their [article about color blindness](#).

Dichromacy





Tritanopia
B48089

Trichromacy



Original Color
B47F8D

Protanomaly
9C8892

Deuteranomaly
A5858C

Tritanomaly
B4808A

Monochromacy



Original Color
B47F8D

Achromatopsia
909090

Achromatomaly
9D8A8F

CSS Examples

Text

The CSS property to change the color of the text to Hex B47F8D is called "color". The color property can be set on classes, ids or directly on the HTML element.

This example shows how text in the color #B47F8D looks like.

```
.text, #text, p{  
    color:#B47F8D  
}
```

If you want to add a text shadow in that color use the text-shadow property, you can generate a text shadow directly with our [CSS Text Shadow Generator](#).

Here you see how black text with a 4 pixel #B47F8D colored shadow looks like.

```
.shadow{ text-shadow: 4px 4px 2px #B47F8D
}
```

Border

The CSS property to change the border of an element to Hex B47F8D is called "border". The border property can be set on classes, ids or directly on the HTML element.

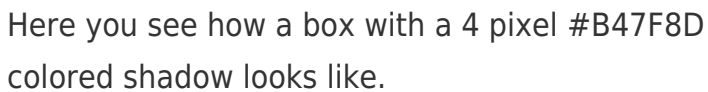
This example shows the color as border, it can be applied via the CSS property "border" or "border-color".

```
.border, #border, table{ border:4px solid
#B47F8D }
```

If only the border color should be changed use the property `border-color`.

```
.border{ border-color:#B47F8D }
```

If you want to add a box shadow in that color use:



Here you see how a box with a 4 pixel #B47F8D colored shadow looks like.

```
.boxshadow{ -moz-box-shadow:4px 4px 4px  
4px #B47F8D; -webkit-box-shadow:4px 4px  
4px 4px #B47F8D; box-shadow:4px 4px 4px  
4px #B47F8D }
```

Background

The CSS property to change the background color of an element to Hex B47F8D is called "background". The background property can be set on classes, ids or directly on the HTML element.

```
.background, #background, body{  
background:#B47F8D }
```

If only the background color should be changed can be used:

```
.background{ background-color:#B47F8D }
```

This example shows the color as background, it is applied via the CSS property "background".

To optimize and compress your CSS code, you can use our [online CSS compressor and optimizer](#) based on csstidy. If you want to create a linear or radial gradient as background or border, check our [CSS Gradient Generator](#).

Hey! You found this booklet interesting? Support Converting Colors with the new Membership Option!

The pro membership hides all ads, plus gives you double the colors in the color bucket, and more awesome pro features!

[Learn more, Memberships starting at \\$2.50/m!](#)

**Follow me
on Twitter!**

@ConvertingColor