

# Converting Colors

Hex(B4814D)

Have a look what the booklet for  
Hex(B4814D) contains.

<b>Hex(B4814D)</b> .....	3
<b><i>Conversions</i></b> .....	4
<b><i>Details</i></b> .....	6
<b><i>Harmonies</i></b> .....	11
<b><i>Previews</i></b> .....	23
<b><i>Color Blindness Simulation</i></b> .....	26
<b><i>CSS Examples</i></b> .....	29

**Color**

**Hex(B4814D)**

# Conversions

## Conversions Part 1

<b>Format</b>	<b>Color</b>
Hex	B4814D
RGB	180, 129, 77
RGB Percent	71%, 51%, 30%
CMY	0.2941, 0.4941, 0.6980
CMYK	0.00, 0.28, 0.57, 0.29
HSL	30°, 41%, 50%
HSV	30°, 57%, 71%
XYZ	28.0122, 25.9396, 10.5516
YIQ	138.3210, 47.0880, -5.3600

# Conversions

## Conversions Part 2

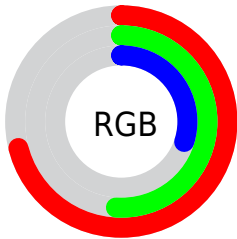
<b>Format</b>	<b>Color</b>
<b>R<sub>YB</sub></b>	178, 180, 77
Decimal	11829581
CIE <sub>Lab</sub>	57.98, 13.86, 35.69
CIE <sub>LCh</sub>	58, 38.284, 68.771
Yxy	25.9396, 0.4343, 0.4021
Android (android.graphics.Color)	4290019661 (0xFFB4814D)
YUV	138.3210, -30.2313, 36.5525
Hunter-Lab	50.9310, 9.0464, 23.3683

# Details

The Hex color **B4814D** is a dark color, and the websafe version is hex **CC9966**. A complement of this color would be **4D80B4**, and the grayscale version is **8B8B8B**.

A 20% lighter version of the original color is **EEB67F**, and **7C501E** is the 20% darker color. If you saturate the color by 10%, you get **B4783B**, and if you desaturate by 10%, it is **B48A5F**.

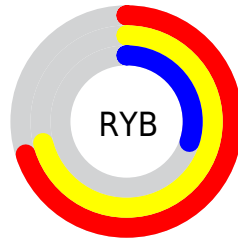
# Distribution



Red (71%)

Green (51%)

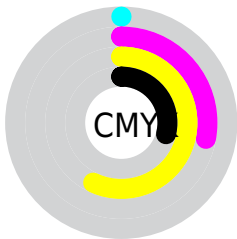
Blue (30%)



Red (70%)

Yellow (71%)

Blue (30%)

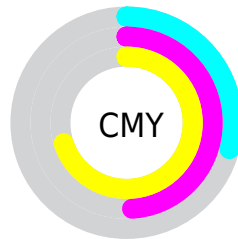


Cyan (0%)

Magenta (28%)

Yellow (57%)

Black (29%)



Cyan (29%)

Magenta (49%)

Yellow (70%)

# Brightness & Saturation Gradients

These gradients show how the Hex color B4814D changes by changing the brightness by 10 percent. The first figure shows a shift by +10% for each color and the second figure -10%.

Similar to the brightness gradients but the following saturation gradients show a change of the Hex color B4814D by changing the saturation by 10% instead.



 B4814D

 B4814D

FFFFFF

 986835

 EEB67F

 7C501E

 FFD199

 613906

 FFEEB5

 472300

 FFFFD0

 2D0F00

 FFFFED

 0D0000

 000000

 B4814D

 B4814D

 B4783B

 B48A5F

 B46F29

 B49371

 B46617

 B49C83

 B45D05

 B4A595

 B45B00

 B4AEA7

 B4B6B9

 B4BFCB

 B4C8DD

 B4D1EF

# Harmonies

## Analogous

The Analogous color harmony consists of three colors that are next to each other on the color wheel.



C77663



B4814D



978D48

# Triad

The Triadic color harmony groups three colors that are evenly spaced from another and form a triangle on the color wheel.



B4814D



009D94



9B7FC0

# Complementary

The Complementary color scheme is a pair of colors which are on the opposite of each other on the color wheel.



B4814D



4D80B4

# Split Complementary

Split-complementary colors differ from the complementary color scheme. The scheme consists of three colors, the original color and two neighbors of the complement color.



688BCD



B4814D



009BB4

# Square

The Square scheme is like the rectangle color scheme, but the four colors are evenly spaced on the color wheel.



B4814D



469B72



1095C9



BD74A4

# Rectangle

The Rectangle color scheme consists of four colors that form a rectangle on the color wheel.



B4814D



7F934F



1095C9



8C83C6



# Sweetspot

The Sweet Spot groups the original color and five complimentary colors.



B4814D



EBD7C3



B44D81



756A5E



F5F5F5



757575



# Same Dimension

The Same Dimension uses a secret algorithm to generate beautiful new colors.



B4814D



EB9A49



B4B44D



595550



994D00



1A0D00



# Inverse Universe

The Inverse Universe completely reimagines the original color for something new.



4D80B4



4999EB



4D4DB4



505559



004C99

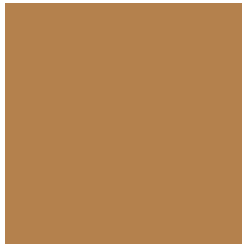


000D1A



# Previews

## White Background



This preview shows how the Hex color B4814D looks on a white background.

## Color Contrast Check

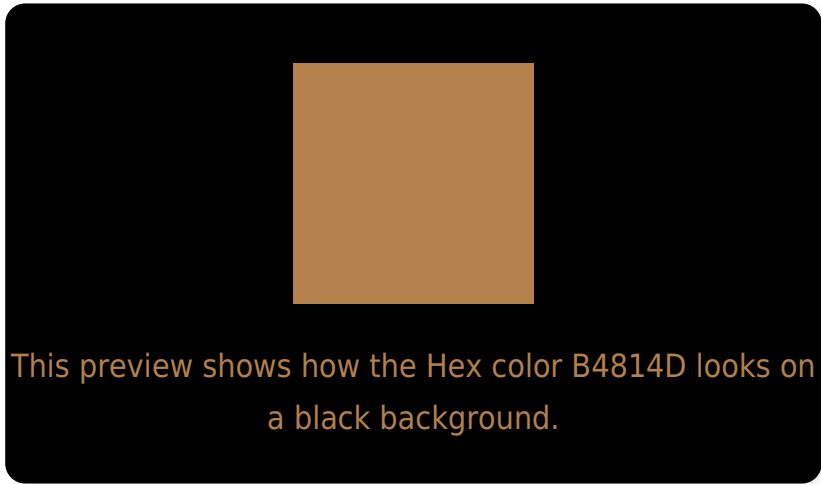
Large Text (above 18pt) WCAG AA ✓ Pass

Any Text WCAG AA × Fail

Large Text (above 18pt) WCAG AAA × Fail

Any Text WCAG AAA × Fail

# Black Background



## Color Contrast Check

Large Text (above 18pt) WCAG AA ✓ Pass

Any Text WCAG AA ✓ Pass

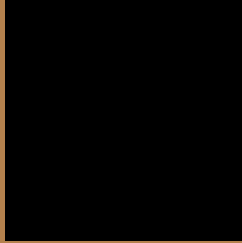
Large Text (above 18pt) WCAG AAA ✓ Pass

Any Text WCAG AAA × Fail

If you want to check with other color combinations, try the [Color Contrast Checker](#).



## Hex B4814D Background



This preview shows how black text looks on a background with the Hex color B4814D.



This preview shows how white text looks on a background with the Hex color B4814D.

# Color Blindness Simulation

Color vision deficiency is a very complex topic, and I could not describe the different causes any better than Wikipedia does, so if you want to learn more, you should check out their [article about color blindness](#).


## Dichromacy



**Original Color**  
B4814D

**Protanopia**  
998C51

**Deuteranopia**  
AB854C



**Tritanopia**  
B87A84

# Trichromacy



**Original Color**  
B4814D

**Protanomaly**  
A38850

**Deuteranomaly**  
AE844C

**Tritanomaly**  
B77D70

# Monochromacy



**Original Color**  
B4814D

**Achromatopsia**  
8A8A8A

**Achromatomaly**  
998774

# CSS Examples

## Text

The CSS property to change the color of the text to Hex B4814D is called "color". The color property can be set on classes, ids or directly on the HTML element.

This example shows how text in the color #B4814D looks like.

```
.text, #text, p{  
    color:#B4814D  
}
```

If you want to add a text shadow in that color use the text-shadow property, you can generate a text shadow directly with our [CSS Text Shadow Generator](#).

Here you see how black text with a 4 pixel #B4814D colored shadow looks like.

```
.shadow{ text-shadow: 4px 4px 2px #B4814D
}
```

## Border

The CSS property to change the border of an element to Hex B4814D is called "border". The border property can be set on classes, ids or directly on the HTML element.

This example shows the color as border, it can be applied via the CSS property "border" or "border-color".

```
.border, #border, table{ border:4px solid
#B4814D }
```

If only the border color should be changed use the property `border-color`.

```
.border{ border-color:#B4814D }
```

If you want to add a box shadow in that color use:

Here you see how a box with a 4 pixel #B4814D colored shadow looks like.

```
.boxshadow{ -moz-box-shadow:4px 4px 4px  
4px #B4814D; -webkit-box-shadow:4px 4px  
4px 4px #B4814D; box-shadow:4px 4px 4px  
4px #B4814D }
```

# Background

The CSS property to change the background color of an element to Hex B4814D is called "background". The background property can be set on classes, ids or directly on the HTML element.

```
.background, #background, body{  
background:#B4814D }
```

If only the background color should be changed can be used:

```
.background{ background-color:#B4814D }
```

This example shows the color as background, it is applied via the CSS property "background".

To optimize and compress your CSS code, you can use our [online CSS compressor and optimizer](#) based on csstidy. If you want to create a linear or radial gradient as background or border, check our [CSS Gradient Generator](#).



Hey! You found this booklet interesting? Support Converting Colors with the new Membership Option!

The pro membership hides all ads, plus gives you double the colors in the color bucket, and more awesome pro features!

**[Learn more, Memberships starting at \\$2.50/m!](#)**

**Follow me  
on Twitter!**

@ConvertingColor