

# Converting Colors

Hex(B4824B)

Have a look what the booklet for  
Hex(B4824B) contains.

<b>Hex(B4824B)</b> .....	3
<b><i>Conversions</i></b> .....	4
<b><i>Details</i></b> .....	6
<b><i>Harmonies</i></b> .....	11
<b><i>Previews</i></b> .....	23
<b><i>Color Blindness Simulation</i></b> .....	26
<b><i>CSS Examples</i></b> .....	29

**Color**

**Hex(B4824B)**

# Conversions

## Conversions Part 1

<b>Format</b>	<b>Color</b>
Hex	B4824B
RGB	180, 130, 75
RGB Percent	71%, 51%, 29%
CMY	0.2941, 0.4902, 0.7059
CMYK	0.00, 0.28, 0.58, 0.29
HSL	31°, 41%, 50%
HSV	31°, 58%, 71%
XYZ	28.0750, 26.1766, 10.2295
YIQ	138.6800, 47.4550, -6.5050

# Conversions

## Conversions Part 2

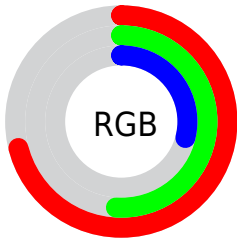
<b>Format</b>	<b>Color</b>
<b>R<sub>Y</sub>B</b>	170, 180, 75
Decimal	11829835
CIE Lab	58.20, 13.14, 37.02
CIE LCh	58, 39.282, 70.452
Yxy	26.1766, 0.4354, 0.4060
Android (android.graphics.Color)	4290019915 (0xFFB4824B)
YUV	138.6800, -31.3942, 36.2376
Hunter-Lab	51.1630, 8.4141, 23.9598

# Details

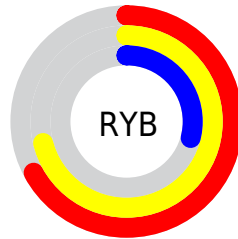
The Hex color **B4824B** is a dark color, and the websafe version is hex **CC9966**. A complement of this color would be **4B7DB4**, and the grayscale version is **8B8B8B**.

A 20% lighter version of the original color is **EEB77D**, and **7C511C** is the 20% darker color. If you saturate the color by 10%, you get **B47939**, and if you desaturate by 10%, it is **B48B5D**.

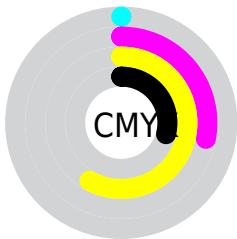
# Distribution



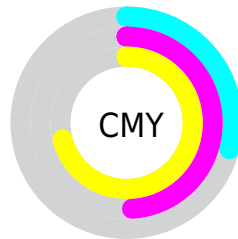
- Red (71%)
- Green (51%)
- Blue (29%)



- Red (67%)
- Yellow (71%)
- Blue (29%)



- Cyan (0%)
- Magenta (28%)
- Yellow (58%)
- Black (29%)



- Cyan (29%)
- Magenta (49%)
- Yellow (71%)

# Brightness & Saturation Gradients

These gradients show how the Hex color B4824B changes by changing the brightness by 10 percent. The first figure shows a shift by +10% for each color and the second figure -10%.

Similar to the brightness gradients but the following saturation gradients show a change of the Hex color B4824B by changing the saturation by 10% instead.



 B4824B

 B4824B

FFFFFF

 986933

 EEB77D

 7C511C

 FFD397

 613A03

 FFEFB3

 472400

 FFFFCE

 2D1000

 FFFFEB

 0E0000

 000000

 B4824B

 B4824B

 B47939

 B48B5D

 B47127


 B4936F

 B46815

 B49C81

 B46003

 B4A493

 B45E00

 B4ADA5

 B4B5B7

 B4BEC9

 B4C7DB

 B4CFED

# Harmonies

## Analogous

The Analogous color harmony consists of three colors that are next to each other on the color wheel.



C87661



B4824B



968E46

# Triad

The Triadic color harmony groups three colors that are evenly spaced from another and form a triangle on the color wheel.



B4824B



009E97



9F7EC0

# Complementary

The Complementary color scheme is a pair of colors which are on the opposite of each other on the color wheel.



B4824B



4B7DB4

# Split Complementary

Split-complementary colors differ from the complementary color scheme. The scheme consists of three colors, the original color and two neighbors of the complement color.



6A8BCF



B4824B



009CB8

# Square

The Square scheme is like the rectangle color scheme, but the four colors are evenly spaced on the color wheel.



B4824B



419C74



0D96CC



C073A4

# Rectangle

The Rectangle color scheme consists of four colors that form a rectangle on the color wheel.



B4824B



7D944F



0D96CC



8F83C7



# Sweetspot

The Sweet Spot groups the original color and five complimentary colors.



B4824B



EBD6C0



B44B7E



75695B



F5F5F5



757575



# Same Dimension

The Same Dimension uses a secret algorithm to generate beautiful new colors.



B4824B



EB9C46



B2B44B



595550



995000



1A0D00



# Inverse Universe

The Inverse Universe completely reimagines the original color for something new.



4B7DB4



4695EB



4D4BB4



505559



004999

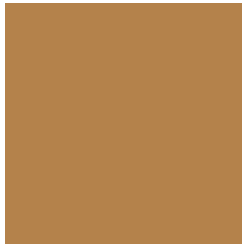


000C1A



# Previews

## White Background



This preview shows how the Hex color B4824B looks on a white background.

## Color Contrast Check

Large Text (above 18pt) WCAG AA ✓ Pass

Any Text WCAG AA ✗ Fail

Large Text (above 18pt) WCAG AAA ✗ Fail

Any Text WCAG AAA ✗ Fail

# Black Background



## Color Contrast Check

Large Text (above 18pt) WCAG AA ✓ Pass

Any Text WCAG AA ✓ Pass

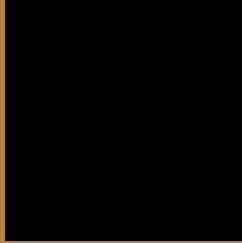
Large Text (above 18pt) WCAG AAA ✓ Pass

Any Text WCAG AAA × Fail

If you want to check with other color combinations, try the [Color Contrast Checker](#).



## Hex B4824B Background



This preview shows how black text looks on a background with the Hex color B4824B.



This preview shows how white text looks on a background with the Hex color B4824B.

# Color Blindness Simulation

Color vision deficiency is a very complex topic, and I could not describe the different causes any better than Wikipedia does, so if you want to learn more, you should check out their [article about color blindness](#).

## Dichromacy



**Original Color**  
B4824B

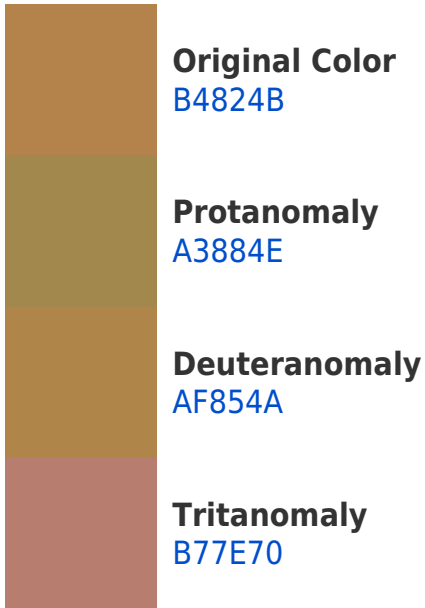
**Protanopia**  
9A8C4F

**Deuteranopia**  
AC864A

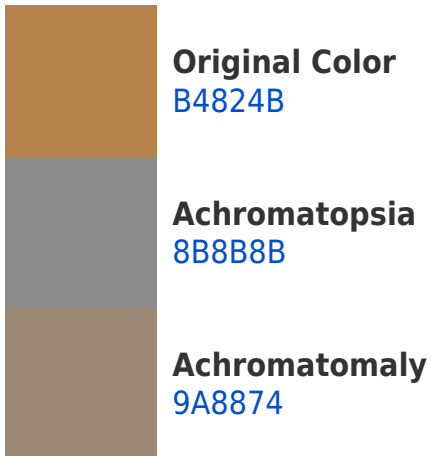


**Tritanopia**  
B87B85

# Trichromacy



# Monochromacy



# CSS Examples

## Text

The CSS property to change the color of the text to Hex B4824B is called "color". The color property can be set on classes, ids or directly on the HTML element.

This example shows how text in the color #B4824B looks like.

```
.text, #text, p{  
    color:#B4824B  
}
```

If you want to add a text shadow in that color use the text-shadow property, you can generate a text shadow directly with our [CSS Text Shadow Generator](#).

Here you see how black text with a 4 pixel #B4824B colored shadow looks like.

```
.shadow{ text-shadow: 4px 4px 2px #B4824B
}
```

## Border

The CSS property to change the border of an element to Hex B4824B is called "border". The border property can be set on classes, ids or directly on the HTML element.

This example shows the color as border, it can be applied via the CSS property "border" or "border-color".

```
.border, #border, table{ border:4px solid
#B4824B }
```

If only the border color should be changed use the property `border-color`.

```
.border{ border-color:#B4824B }
```

If you want to add a box shadow in that color use:

Here you see how a box with a 4 pixel #B4824B colored shadow looks like.

```
.boxshadow{ -moz-box-shadow:4px 4px 4px  
4px #B4824B; -webkit-box-shadow:4px 4px  
4px 4px #B4824B; box-shadow:4px 4px 4px  
4px #B4824B }
```

# Background

The CSS property to change the background color of an element to Hex B4824B is called "background". The background property can be set on classes, ids or directly on the HTML element.

```
.background, #background, body{  
background:#B4824B }
```

If only the background color should be changed can be used:

```
.background{ background-color:#B4824B }
```

This example shows the color as background, it is applied via the CSS property "background".

To optimize and compress your CSS code, you can use our [online CSS compressor and optimizer](#) based on csstidy. If you want to create a linear or radial gradient as background or border, check our [CSS Gradient Generator](#).



Hey! You found this booklet interesting? Support Converting Colors with the new Membership Option!

The pro membership hides all ads, plus gives you double the colors in the color bucket, and more awesome pro features!

**[Learn more, Memberships starting at \\$2.50/m!](#)**

**Follow me  
on Twitter!**

@ConvertingColor