

Converting Colors

Hex(B4828B)

Have a look what the booklet for
Hex(B4828B) contains.

Hex(B4828B)	3
<i>Conversions</i>	4
<i>Details</i>	6
<i>Harmonies</i>	11
<i>Previews</i>	23
<i>Color Blindness Simulation</i>	26
<i>CSS Examples</i>	29

Color

Hex(B4828B)

Conversions

Conversions Part 1

Format	Color
Hex	B4828B
RGB	180, 130, 139
RGB Percent	71%, 51%, 55%
CMY	0.2941, 0.4902, 0.4549
CMYK	0.00, 0.28, 0.23, 0.29
HSL	349°, 25%, 61%
HSV	349°, 28%, 71%
XYZ	31.4652, 27.5326, 28.0820
YIQ	145.9760, 26.9110, 13.3990

Conversions

Conversions Part 2

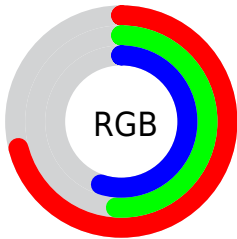
Format	Color
RYB	180, 130, 139
Decimal	11829899
CIELab	59.46, 20.61, 2.80
CIElCh	59, 20.800, 7.746
Yxy	27.5326, 0.3613, 0.3162
Android (android.graphics.Color)	4290019979 (0xFFB4828B)
YUV	145.9760, -3.4392, 29.8390
Hunter-Lab	52.4716, 15.2145, 4.9989

Details

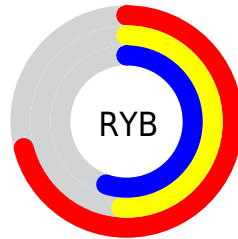
The Hex color **B4828B** is a light color, and the websafe version is hex **CC9999**. A complement of this color would be **82B4AB**, and the grayscale version is **929292**.

A 20% lighter version of the original color is **EDB7C0**, and **7E5059** is the 20% darker color. If you saturate the color by 10%, you get **B4707C**, and if you desaturate by 10%, it is **B4949A**.

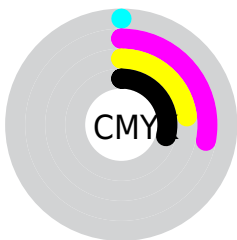
Distribution



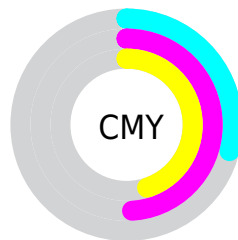
- Red (71%)
- Green (51%)
- Blue (55%)



- Red (71%)
- Yellow (51%)
- Blue (55%)



- Cyan (0%)
- Magenta (28%)
- Yellow (23%)
- Black (29%)



- Cyan (29%)
- Magenta (49%)
- Yellow (45%)

Brightness & Saturation Gradients

These gradients show how the Hex color B4828B changes by changing the brightness by 10 percent. The first figure shows a shift by +10% for each color and the second figure -10%.

Similar to the brightness gradients but the following saturation gradients show a change of the Hex color B4828B by changing the saturation by 10% instead.



B4828B



B4828B

FFFFFF



996972



EDB7C0



7E5059



FFD3DC



643942



FFEFF9



4B222C



330D17



200001



000000



B4828B



B4828B



B4707C



B4949A

 B45E6D

 B4A6A9

 B44C5F

 B4B8B7

 B43A50

 B4CAC6

 B42841

 B4DCD5

 B41632

 B4EEE4

 B40424

 B4FFF2

 B40020

 B4FFFF

Harmonies

Analogous

The Analogous color harmony consists of three colors that are next to each other on the color wheel.



AB849D



B4828B



B3847A

Triad

The Triadic color harmony groups three colors that are evenly spaced from another and form a triangle on the color wheel.



B4828B



849572



6895B0

Complementary

The Complementary color scheme is a pair of colors which are on the opposite of each other on the color wheel.



B4828B



82B4AB

Split Complementary

Split-complementary colors differ from the complementary color scheme. The scheme consists of three colors, the original color and two neighbors of the complement color.



5B98A5



B4828B



6F9881

Square

The Square scheme is like the rectangle color scheme, but the four colors are evenly spaced on the color wheel.



B4828B



98906B



5F9A93



808FB3

Rectangle

The Rectangle color scheme consists of four colors that form a rectangle on the color wheel.



B4828B



AD8771



5F9A93



6296AD

Sweetspot

The Sweet Spot groups the original color and five complimentary colors.



B4828B



EBD8DB



AB82B4



756A6C



F5F5F5



757575

Same Dimension

The Same Dimension uses a secret algorithm to generate beautiful new colors.



B4828B



EB9DAB



B49282



595052



99001C



1A0005

Inverse Universe

The Inverse Universe completely reimagines the original color for something new.



B4828B



EB9DAB



82A4B4



595052



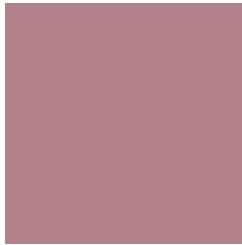
99001C



1A0005

Previews

White Background



This preview shows how the Hex color B4828B looks on a white background.

Color Contrast Check

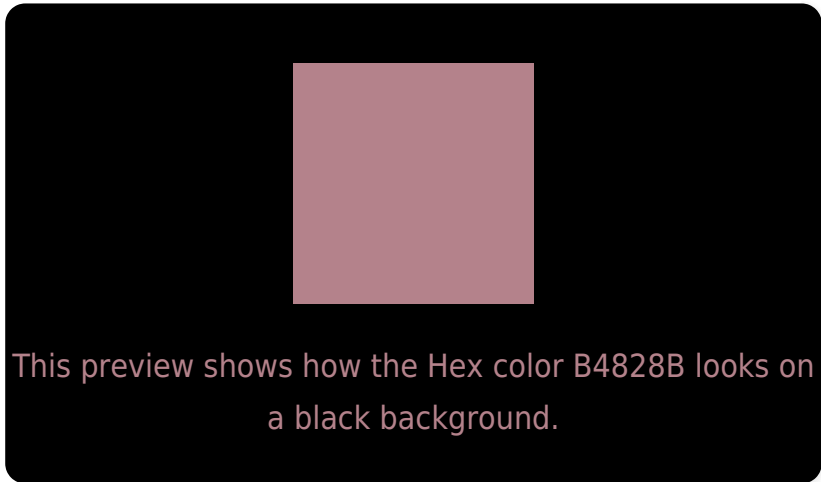
Large Text (above 18pt) WCAG AA ✓ Pass

Any Text WCAG AA ✗ Fail

Large Text (above 18pt) WCAG AAA ✗ Fail

Any Text WCAG AAA ✗ Fail

Black Background



Color Contrast Check

Large Text (above 18pt) WCAG AA ✓ Pass

Any Text WCAG AA ✓ Pass

Large Text (above 18pt) WCAG AAA ✓ Pass

Any Text WCAG AAA × Fail

If you want to check with other color combinations, try the [Color Contrast Checker](#).

Hex B4828B Background



This preview shows how black text looks on a background with the Hex color B4828B.



This preview shows how white text looks on a background with the Hex color B4828B.

Color Blindness Simulation

Color vision deficiency is a very complex topic, and I could not describe the different causes any better than Wikipedia does, so if you want to learn more, you should check out their [article about color blindness](#).


Dichromacy



Original Color
B4828B

Protanopia
918F92

Deuteranopia
A08B89



Tritanopia
B4828C

Trichromacy



Original Color
B4828B

Protanomaly
9E8A8F

Deuteranomaly
A7888A

Tritanomaly
B4828C

Monochromacy



Original Color
B4828B

Achromatopsia
929292

Achromatomaly
9E8C8F

CSS Examples

Text

The CSS property to change the color of the text to Hex B4828B is called "color". The color property can be set on classes, ids or directly on the HTML element.

This example shows how text in the color #B4828B looks like.

```
.text, #text, p{  
    color:#B4828B  
}
```

If you want to add a text shadow in that color use the text-shadow property, you can generate a text shadow directly with our [CSS Text Shadow Generator](#).

Here you see how black text with a 4 pixel #B4828B colored shadow looks like.

```
.shadow{ text-shadow: 4px 4px 2px #B4828B
}
```

Border

The CSS property to change the border of an element to Hex B4828B is called "border". The border property can be set on classes, ids or directly on the HTML element.

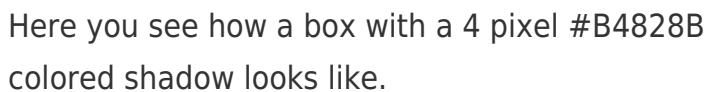
This example shows the color as border, it can be applied via the CSS property "border" or "border-color".

```
.border, #border, table{ border:4px solid
#B4828B }
```

If only the border color should be changed use the property `border-color`.

```
.border{ border-color:#B4828B }
```

If you want to add a box shadow in that color use:



Here you see how a box with a 4 pixel #B4828B colored shadow looks like.

```
.boxshadow{ -moz-box-shadow:4px 4px 4px  
4px #B4828B; -webkit-box-shadow:4px 4px  
4px 4px #B4828B; box-shadow:4px 4px 4px  
4px #B4828B }
```

Background

The CSS property to change the background color of an element to Hex B4828B is called "background". The background property can be set on classes, ids or directly on the HTML element.

```
.background, #background, body{  
background:#B4828B }
```

If only the background color should be changed can be used:

```
.background{ background-color:#B4828B }
```

This example shows the color as background, it is applied via the CSS property "background".

To optimize and compress your CSS code, you can use our [online CSS compressor and optimizer](#) based on csstidy. If you want to create a linear or radial gradient as background or border, check our [CSS Gradient Generator](#).

Hey! You found this booklet interesting? Support Converting Colors with the new Membership Option!

The pro membership hides all ads, plus gives you double the colors in the color bucket, and more awesome pro features!

[Learn more, Memberships starting at \\$2.50/m!](#)

**Follow me
on Twitter!**

@ConvertingColor