

Converting Colors

Hex(B48349)

Have a look what the booklet for
Hex(B48349) contains.

Hex(B48349)	3
<i>Conversions</i>	4
<i>Details</i>	6
<i>Harmonies</i>	11
<i>Previews</i>	23
<i>Color Blindness Simulation</i>	26
<i>CSS Examples</i>	29

Color

Hex(B48349)

Conversions

Conversions Part 1

Format	Color
Hex	B48349
RGB	180, 131, 73
RGB Percent	71%, 51%, 29%
CMY	0.2941, 0.4863, 0.7137
CMYK	0.00, 0.27, 0.59, 0.29
HSL	33°, 42%, 50%
HSV	33°, 59%, 71%
XYZ	28.1413, 26.4169, 9.9191
YIQ	139.0390, 47.8220, -7.6500

Conversions

Conversions Part 2

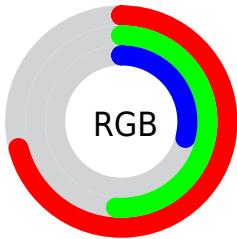
Format	Color
R_{YB}	163, 180, 73
Decimal	11830089
CIE _{Lab}	58.43, 12.43, 38.34
CIE _{LCh}	58, 40.302, 72.037
Yxy	26.4169, 0.4365, 0.4097
Android (android.graphics.Color)	4290020169 (0xFFB48349)
YUV	139.0390, -32.5572, 35.9228
Hunter-Lab	51.3974, 7.7875, 24.5359

Details

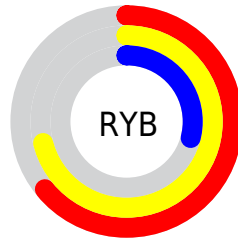
The Hex color **B48349** is a dark color, and the websafe version is hex **CC9966**. A complement of this color would be **497AB4**, and the grayscale version is **8B8B8B**.

A 20% lighter version of the original color is **EEB87B**, and **7C5219** is the 20% darker color. If you saturate the color by 10%, you get **B47B37**, and if you desaturate by 10%, it is **B48B5B**.

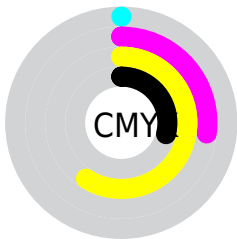
Distribution



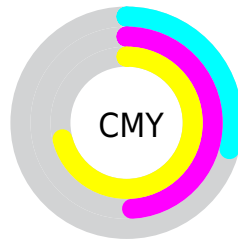
- Red (71%)
- Green (51%)
- Blue (29%)



- Red (64%)
- Yellow (71%)
- Blue (29%)



- Cyan (0%)
- Magenta (27%)
- Yellow (59%)
- Black (29%)



- Cyan (29%)
- Magenta (49%)
- Yellow (71%)

Brightness & Saturation Gradients

These gradients show how the Hex color B48349 changes by changing the brightness by 10 percent. The first figure shows a shift by +10% for each color and the second figure -10%.

Similar to the brightness gradients but the following saturation gradients show a change of the Hex color B48349 by changing the saturation by 10% instead.

 B48349

 B48349

FFFFFF

 986A31

 EEB87B

 7C5219

 FFD495

 613B00

 FFF0B0

 472500

 FFFFCC

 2D1100

 FFFFEE

 0E0000

 000000

 B48349

 B48349

 B47B37

 B48B5B

 B47325

 B4936D

 B46A13

 B49C7F

 B46201

 B4A491

 B46200

 B4ACA3

 B4B4B5

 B4BDC7

 B4C5D9

 B4CDEB

Harmonies

Analogous

The Analogous color harmony consists of three colors that are next to each other on the color wheel.



C9775F



B48349



948F45

Triad

The Triadic color harmony groups three colors that are evenly spaced from another and form a triangle on the color wheel.



B48349



009F9A



A27EC1

Complementary

The Complementary color scheme is a pair of colors which are on the opposite of each other on the color wheel.



B48349



497AB4

Split Complementary

Split-complementary colors differ from the complementary color scheme. The scheme consists of three colors, the original color and two neighbors of the complement color.



6D8BD1



B48349



009DBB

Square

The Square scheme is like the rectangle color scheme, but the four colors are evenly spaced on the color wheel.



B48349



3B9D76



0896CF



C373A3

Rectangle

The Rectangle color scheme consists of four colors that form a rectangle on the color wheel.



B48349



7B954F



0896CF



9382C8

Sweetspot

The Sweet Spot groups the original color and five complimentary colors.



B48349



EBD7C0



B4497B



75695B



F5F5F5



757575

Same Dimension

The Same Dimension uses a secret algorithm to generate beautiful new colors.



B48349



EB9E44



B0B449



595550



995300



1A0E00

Inverse Universe

The Inverse Universe completely reimagines the original color for something new.



497AB4



4490EB



4D49B4



505459



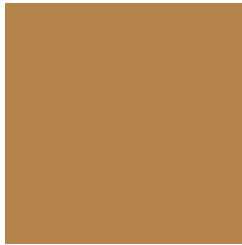
004699



000C1A

Previews

White Background



This preview shows how the Hex color B48349 looks on a white background.

Color Contrast Check

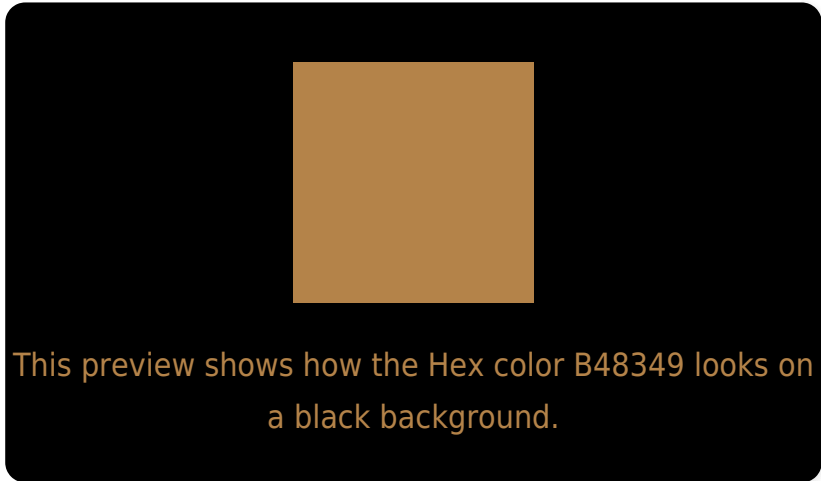
Large Text (above 18pt) WCAG AA ✓ Pass

Any Text WCAG AA × Fail

Large Text (above 18pt) WCAG AAA × Fail

Any Text WCAG AAA × Fail

Black Background



Color Contrast Check

Large Text (above 18pt) WCAG AA ✓ Pass

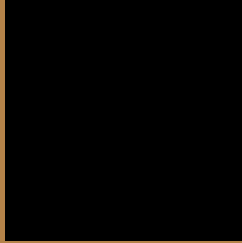
Any Text WCAG AA ✓ Pass

Large Text (above 18pt) WCAG AAA ✓ Pass

Any Text WCAG AAA × Fail

If you want to check with other color combinations, try the [Color Contrast Checker](#).

Hex B48349 Background



This preview shows how black text looks on a background with the Hex color B48349.



This preview shows how white text looks on a background with the Hex color B48349.

Color Blindness Simulation

Color vision deficiency is a very complex topic, and I could not describe the different causes any better than Wikipedia does, so if you want to learn more, you should check out their [article about color blindness](#).

Dichromacy



Original Color
B48349

Protanopia
9B8D4C

Deuteranopia
AD8648



Tritanopia
B97C85

Trichromacy



Original Color
B48349

Protanomaly
A4894B

Deuteranomaly
B08548

Tritanomaly
B77F6F

Monochromacy



Original Color
B48349

Achromatopsia
8B8B8B

Achromatomaly
9A8873

CSS Examples

Text

The CSS property to change the color of the text to Hex B48349 is called "color". The color property can be set on classes, ids or directly on the HTML element.

This example shows how text in the color #B48349 looks like.

```
.text, #text, p{  
    color:#B48349  
}
```

If you want to add a text shadow in that color use the text-shadow property, you can generate a text shadow directly with our [CSS Text Shadow Generator](#).

Here you see how black text with a 4 pixel #B48349 colored shadow looks like.

```
.shadow{ text-shadow: 4px 4px 2px #B48349
}
```

Border

The CSS property to change the border of an element to Hex B48349 is called "border". The border property can be set on classes, ids or directly on the HTML element.

This example shows the color as border, it can be applied via the CSS property "border" or "border-color".

```
.border, #border, table{ border:4px solid
#B48349 }
```

If only the border color should be changed use the property `border-color`.

```
.border{ border-color:#B48349 }
```

If you want to add a box shadow in that color use:

Here you see how a box with a 4 pixel #B48349 colored shadow looks like.

```
.boxshadow{ -moz-box-shadow:4px 4px 4px  
4px #B48349; -webkit-box-shadow:4px 4px  
4px 4px #B48349; box-shadow:4px 4px 4px  
4px #B48349 }
```

Background

The CSS property to change the background color of an element to Hex B48349 is called "background". The background property can be set on classes, ids or directly on the HTML element.

```
.background, #background, body{  
background:#B48349 }
```

If only the background color should be changed can be used:

```
.background{ background-color:#B48349 }
```

This example shows the color as background, it is applied via the CSS property "background".

To optimize and compress your CSS code, you can use our [online CSS compressor and optimizer](#) based on csstidy. If you want to create a linear or radial gradient as background or border, check our [CSS Gradient Generator](#).

Hey! You found this booklet interesting? Support Converting Colors with the new Membership Option!

The pro membership hides all ads, plus gives you double the colors in the color bucket, and more awesome pro features!

[Learn more, Memberships starting at \\$2.50/m!](#)

**Follow me
on Twitter!**

@ConvertingColor